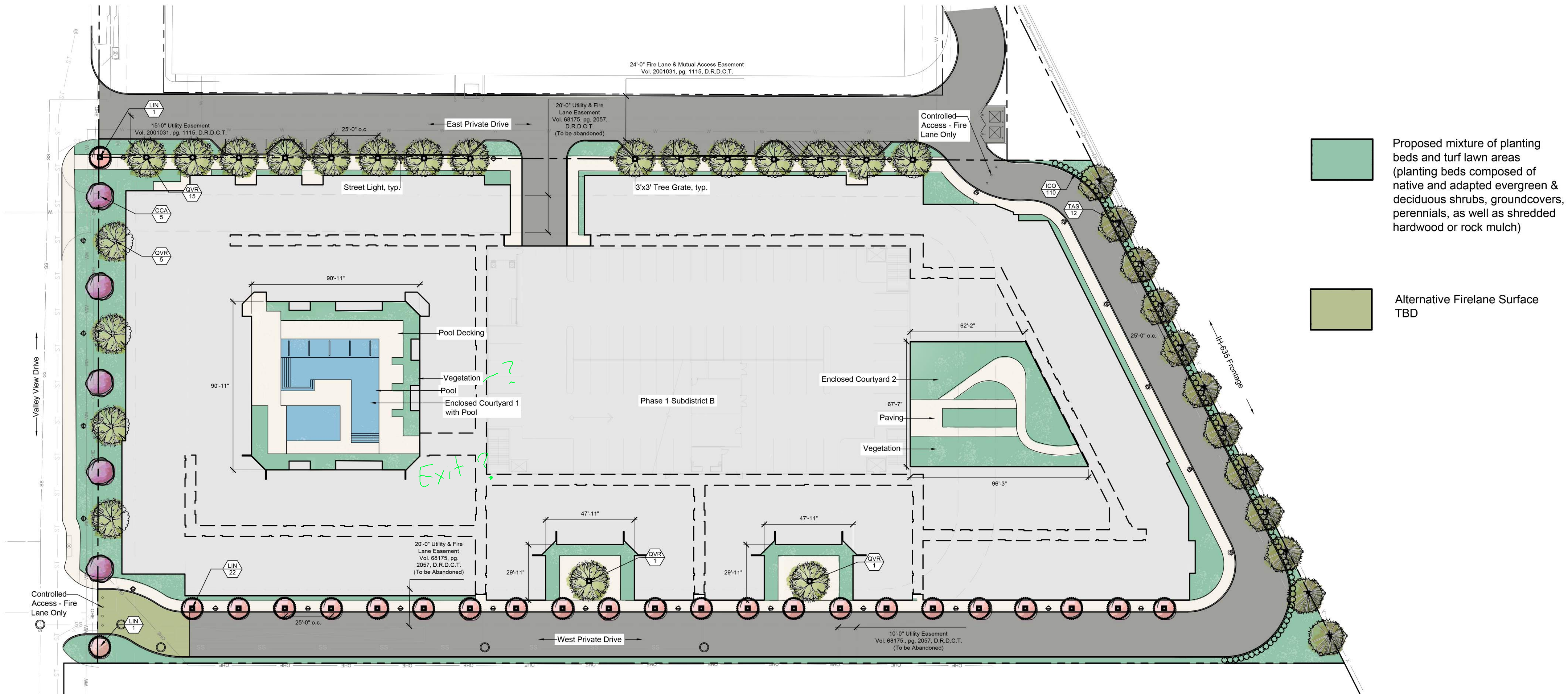




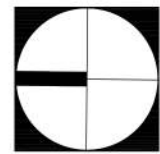
No	Date	Issue



1

OVERALL PLANTING PLAN

Scale: 1" = 30'-0"



Open Space Requirement			
	Required	Provided	Complete
Phase 1 Site total: 164,600 SF			
10% min. of Landscape	16,460 sf	20,800	✓

Parking Area Landscape Requirements			
	Required	Provided	Complete
Total Vehicular Surface Area (15,529 SF)			
5% min. of Landscape	776 SF	1430	✓
Dumpster Screening			
required from all public streets and adjacent properties (masonry or 5' living screen)			✓

Street Tree Requirements			
	Required	Provided	Complete
Valley View Ln. - 274 LF			
1 shade tree / 40 LF ²	7	10	✓
West Private Drive - 542 LF			
1 shade tree / 25 LF	22	22	✓
East Private Drive - 392 LF			
1 shade tree / 25 LF	16	16	✓
IH-635 Frontage Rd. - 303 LF			
1 shade tree / 25 LF	12	12	✓
Notes:			
1. Trees shall be 3" cal. Minimum at time of install.			
2. Staff Review Requested: (2) Ornamental Trees may substitute for (1) Shade Tree where overhead utilities conflict with required shade tree locations.			

PLANT SCHEDULE					
Code	Common Name	Scientific Name	Size	Quantity	Notes
Trees					
QVR	Live Oak 'Highrise'	<i>Quercus virginiana</i> 'QV7IA'	3" cal.	21	full, 12'-14' ht., 7' clear at sidewalks, 14' clear at firelane.
TAS	Pond Cypress	<i>Taxodium ascendens</i>	3" cal.	12	full, 12'-14' ht., 7' clear at sidewalks, 14' clear at firelane.
Ornamental Trees					
CCA	Eve's Necklace	<i>Sophora affinis</i>	3" cal.	5	full, 12'-14' ht., 7' clear at sidewalks, 14' clear at firelane.
LIN	Crape Myrtle	<i>Lagerstroemia indica</i> 'Natchez'	3" cal.	24	full, 12'-14' ht., 7' clear at sidewalks, 14' clear at firelane.
Shrubs					
ICO	Screening Shrub - Dwarf Burford Holly	<i>Ilex cornuta</i> 'Dwarf Burford'	5 gal.	110	full, 36" ht, 18" w, 36" o.c., screening shrub
TBD	Ornamental Shrubs - to be selected from the Recommended Plant Material List in CZO		5 gal.		full, 36" ht, 18" w, 36" o.c.
Groundcover					
	Blackfoot Daisy	<i>melampodium leucanthum</i>	3 gal.	TBD	
	Silver Ponyfoot	<i>Dichondra argentea</i>	3 gal.	TBD	
	Coreopsis	<i>Coreopsis lanceolata</i>	3 gal.	TBD	
Note: Plant List is an aid to bidders only. Contractor shall verify all quantities on plan. All heights and spreads are minimums. All plant material shall meet or exceed Remarks. Plant material size and grade to conform to "American Standards for Nursery Stock" American Association of Nurserymen, latest approved revision, ANSI Z-60-1.					

Site Lighting Requirements			
1 Street Light / 50 LF of required sidewalk			
Valley View Lane (212 LF)	Required	Provided	Complete
East Private Drive (440 LF)	4	5	
Fire Lane (900 LF)	9	8	
	18	18	
TOTAL:	31	31	✓