



City of Farmers Branch

July 15, 2025



Who We Are

Our Mission

To empower individuals to achieve self-sufficiency and foster independence

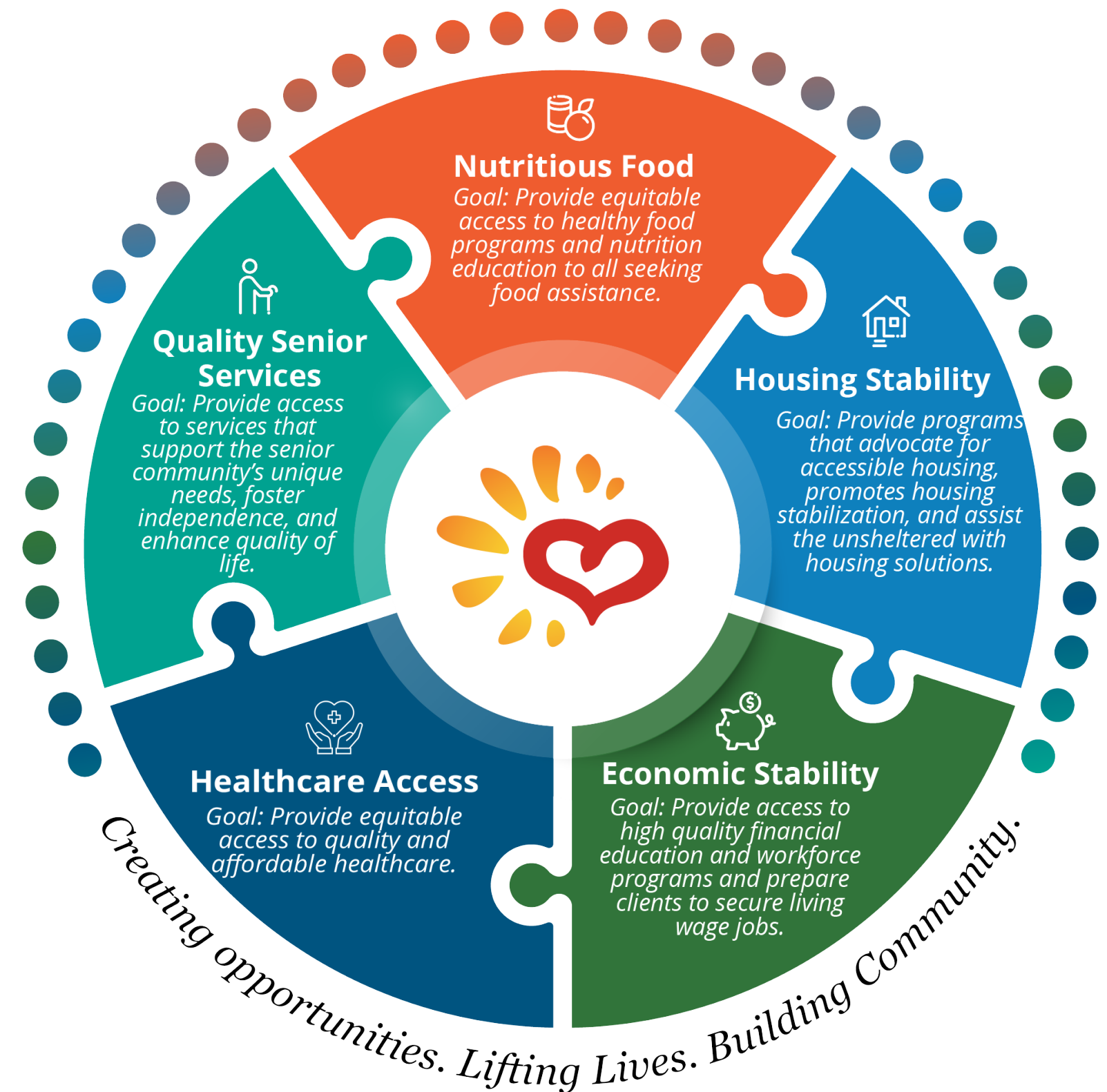
Our Vision

To build a thriving community for *ALL*

Our Values

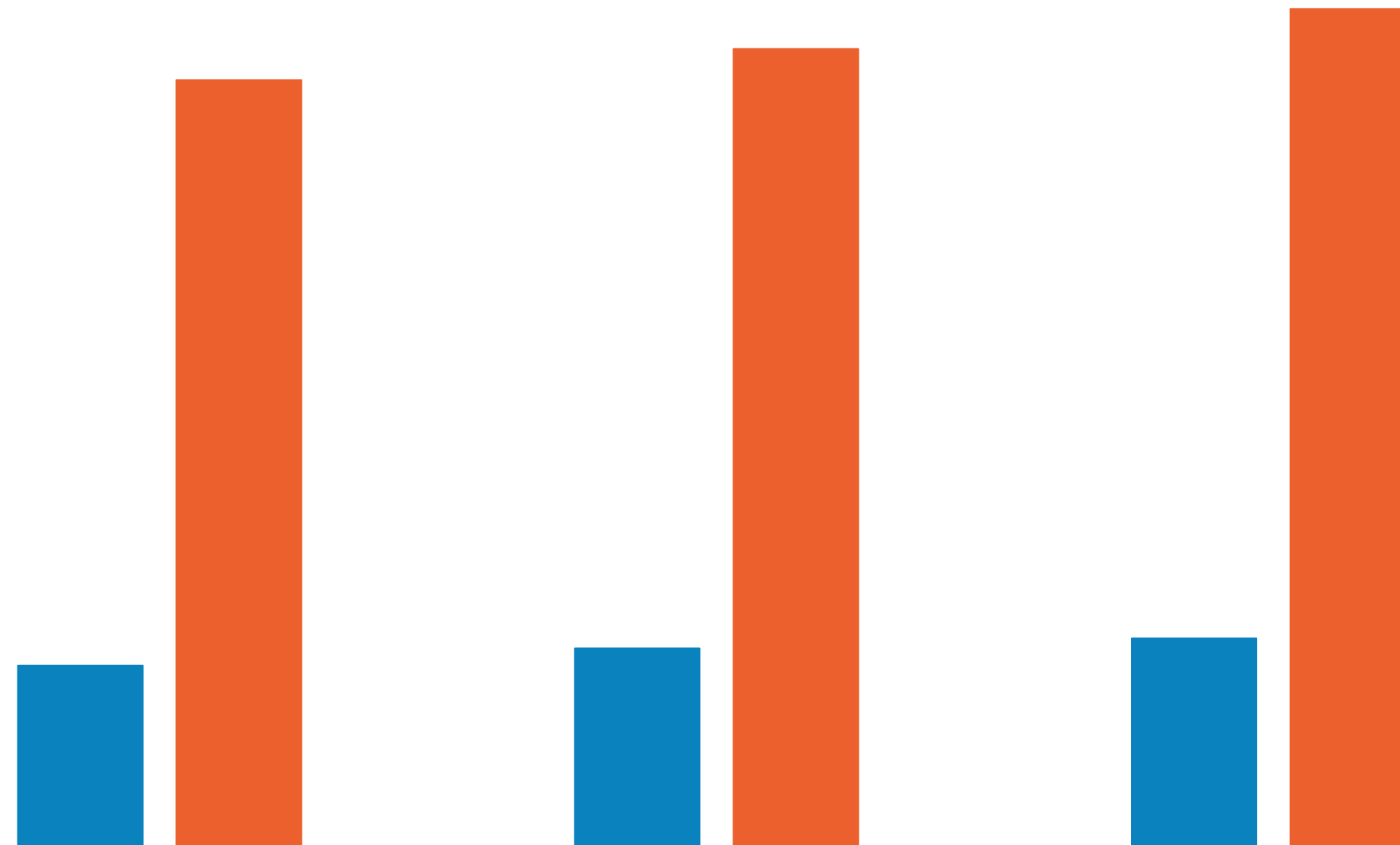
Start with a “Yes” attitude • Celebrate Differences • Be Kind • Embrace Change • Choose Joy

Metrocrest 2030 Strategic Plan





Farmers Branch Residents Served



■ Residents Served
■ Services Provided

FY 24

4,488
18,963

FY 25 Projection

4,914
19,739

FY 26 Projection

5,160
20,726

Our Services



Meet Basic Needs

- Food Assistance
- Housing Stability
- Homeless Resources



Build Economic Stability

- Financial Education
- Workforce Development



Enhance Quality of Life

- Healthcare Guidance
- Nutrition Education
- Referrals & Resources
- Senior Services



Community Partnerships



Complementary Partners

MetroCare
The Concilio
Hope Cottage
Woven Health Clinic
North Texas Food Bank



Workshops & Fairs

Job Fairs
Dallas College
Financial Experts
Health & Wellness Fairs
LegalAid NorthWest Texas



Additional Resources

Nutritionists
Texas AgriLife
Master Gardeners
Parkland Homes Van
Parkland Hospital Network

Access to Healthcare



Healthcare Navigation

Case Management
Benefit Review
Referrals



Education

Your Health Matters Informational Series
Medicare/Medicaid Enrollment
Educational Workshops



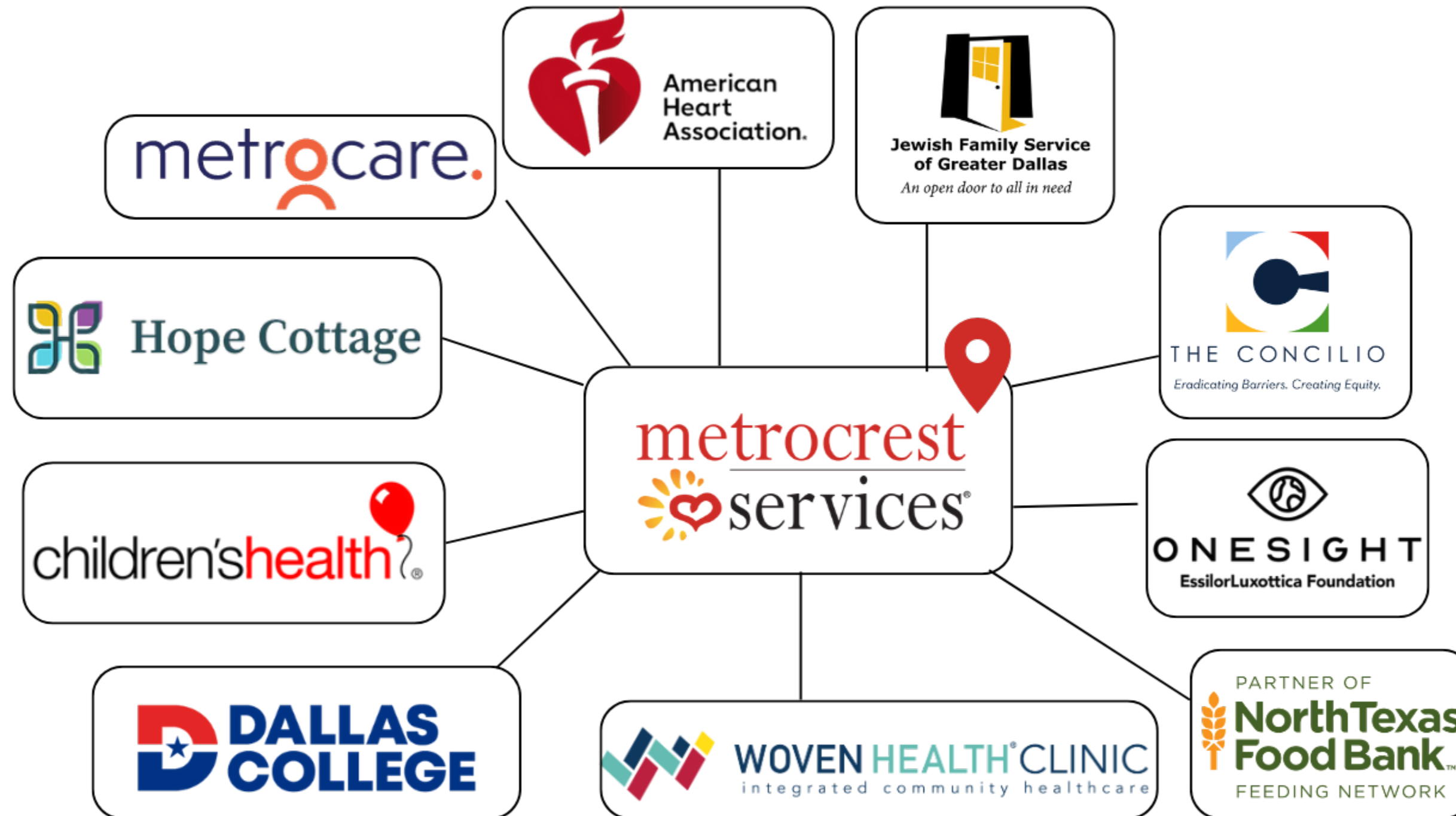
Partnerships

Woven Health
Hope Cottage
Metrocare

Feedback is consistent: people feel seen, heard, and guided, often for the first time when it comes to Healthcare.



Formal Healthcare Partners



Access to Nutrition



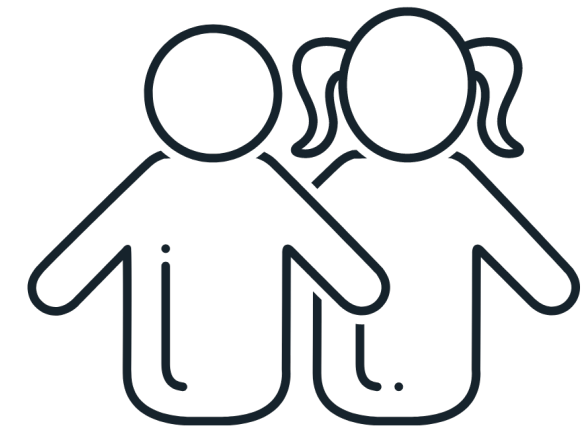
778,000

North Texans are food-insecure
(Texas now leads the nation in hunger)



Texas ranks
3rd

**in the nation for highest number of food-
insecure seniors**
(9.8% in 2024 vs. 8.5% in 2021)



1 in 5

**North Texas children are
facing hunger**
(20.8% in 2024 vs. 15.8% in 2021)

Access to Nutrition

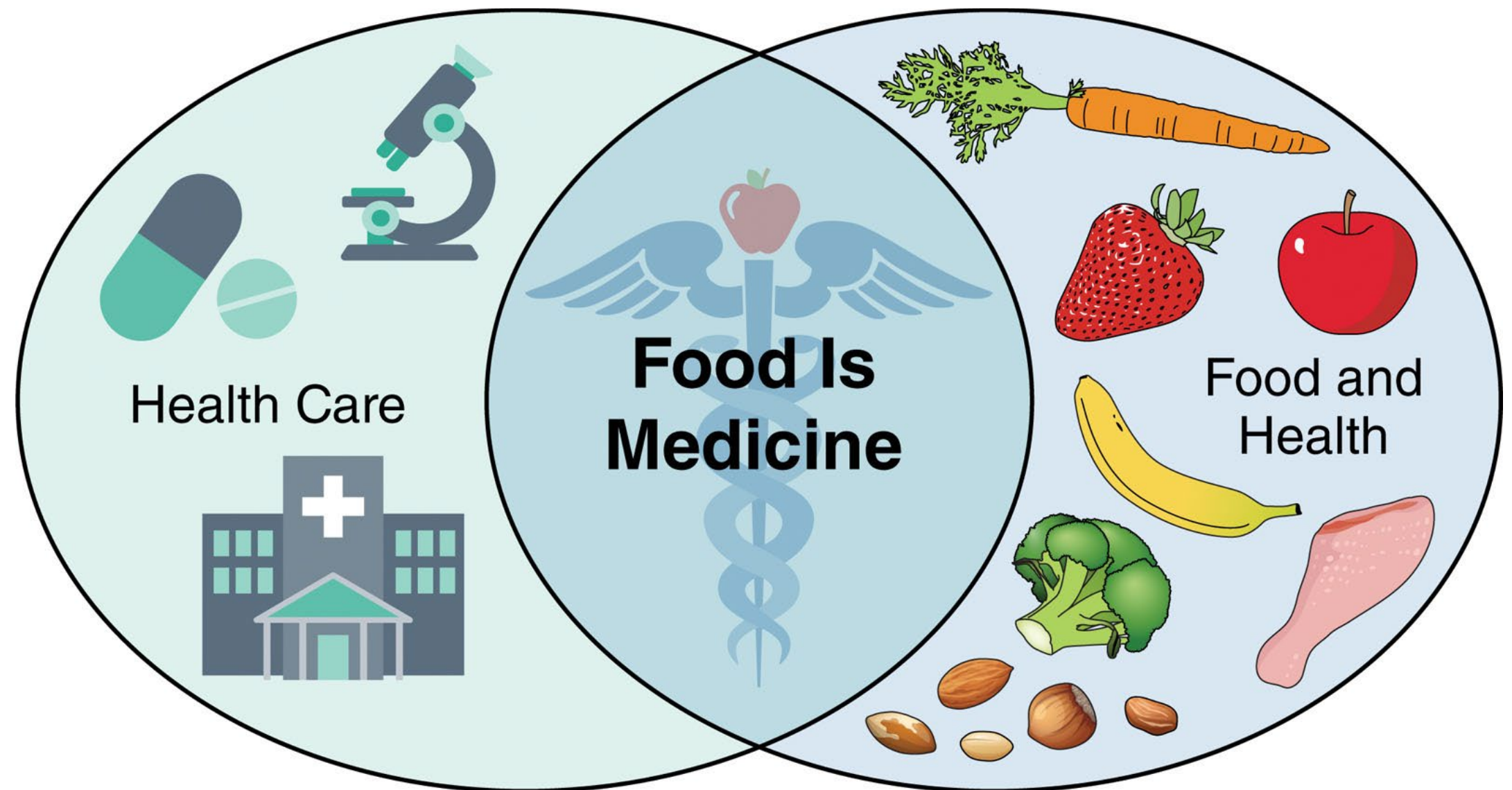
- Client-choice Food Pantry
- Mobile Food Pantry
- Pantry Pals*
- Home-Delivered Meals*
- Teaching Garden
- Teaching Kitchen
- Sack Summer Hunger

*Senior Services



Access to Nutrition

- Certified Heart-Healthy Pantry
- Certified Nudge Pantry
- Focus on Providing Fresh Produce
- Nutrition Education
- Summer Feeding Program





Current Challenges

Federal Funding Reductions

- Impact on Metrocrest Services
 - Less than 3% of Metrocrest Services' budget is federal dollars
 - Potential loss of FEMA and HUD funds
- Impact on non-Profit Sector ("ripple effect")
 - HUD potential \$32B funding loss
 - Impacts Homeless Response Systems
 - North Texas Food Bank (NTFB) losing \$11M in USDA Funding
 - NTFB provides over 90% of the food for the Metrocrest Services' Food Pantry
 - Funding cut means a potential loss of 1M Pounds of Food for Metrocrest Services to distribute
 - Proposed Cuts to Medicaid and SNAP will increase demand for services

Economic Uncertainty

- Metrocrest non-gov't donations down over 20% since January
- Individual and corporate donor uncertainty
- Increased competition for funding
 - Private foundations receiving a 25% increase in grant requests
 - Reduction in recent awards from long-time funders



Thank You

for helping to build a thriving community for all!