



Transform Squire Park

Study Session Meeting | August 19, 2025

Requested By: Parks and Recreation Department



Transform Squire Park Public Outreach Efforts

Background



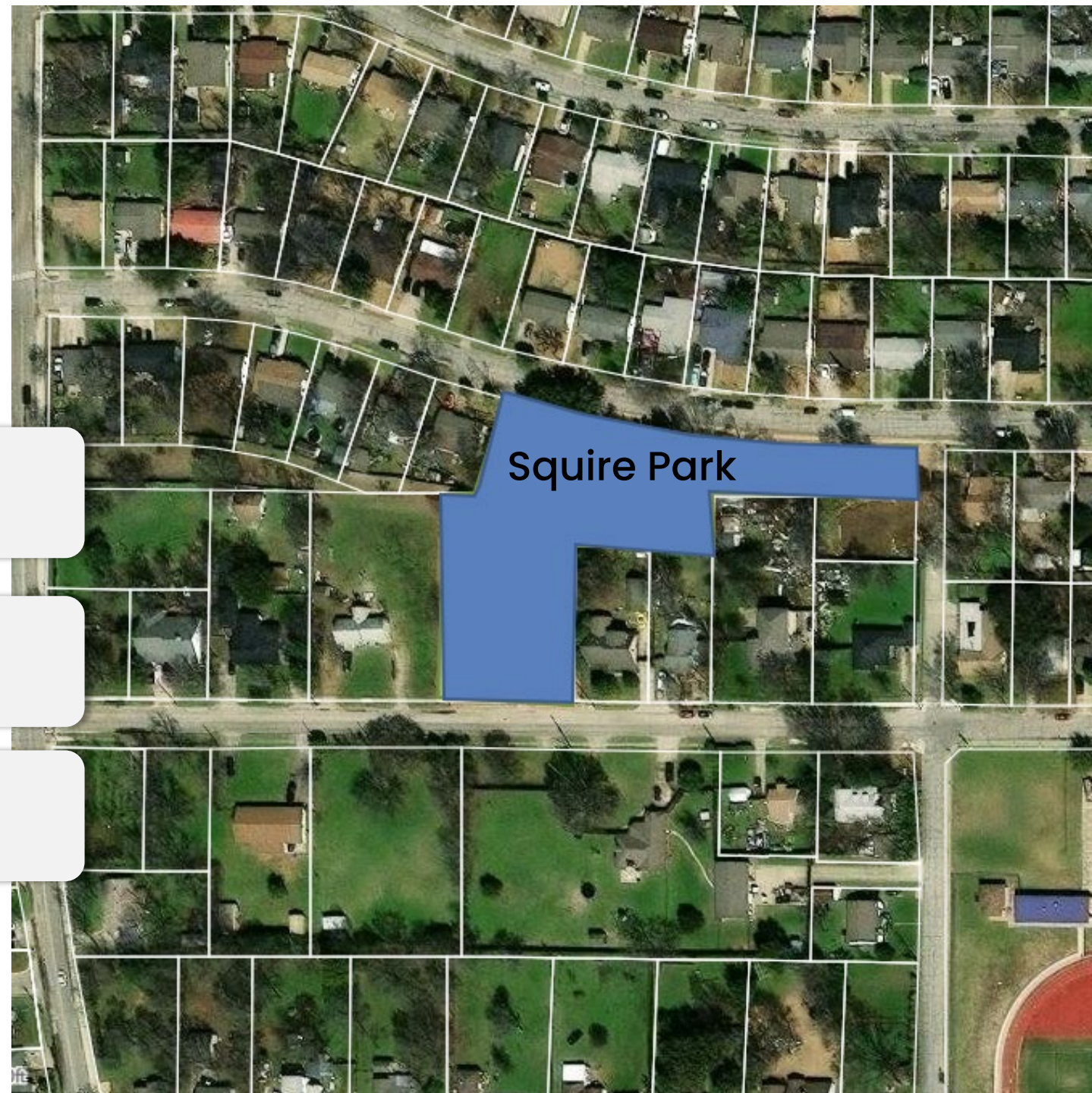
Located in the Valwood Park Neighborhood



1.43 acres Neighborhood Park



2025 Public Outreach Efforts



Outreach Opportunities

Online Survey

Open from April 15th to June 27th

Meeting at Squire Park

June 25th

Visits to Vivian Fields Middle School and Farmers Branch Elementary

April 25th and 28th

Meeting at Vivian Fields Middle School

June 5th

Online Meeting

May 7th



FARMERS BRANCH
TEXAS

Transform Squire Park Public Outreach Efforts

Squire Park User Engagement

Key takeaways from the Public Outreach Efforts.

Help Transform SQUIRE PARK

NEW DATE

3 Ways to Give Input

Meeting at Field	Meeting at the Park	Take the Survey
June 5 6-8 PM Vivian Field School Cafeteria	June 25 6-8 PM Squire Park	Now through June 27

Get all the details at farmersbranchtx.gov/parks

The survey resulted in 149 responses.

April 15th– June 27th

May 7th: Online meeting (13 attendees)

June 5th: Vivian Field Middle School Meeting (11 attendees)

June 25th: Squire Park (75+ attendees)

May – June

Middle school students' surveys envision a walking path and areas for active and passive use.

Elementary students envision an upgraded playground and splashpad

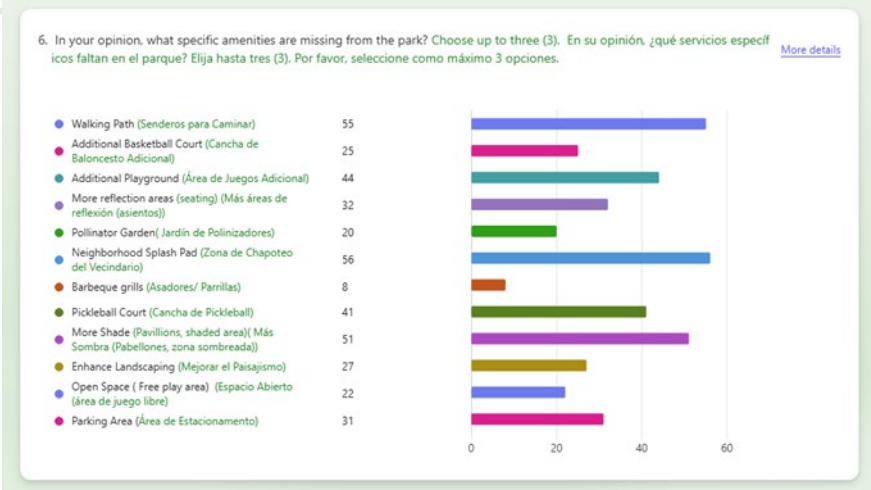
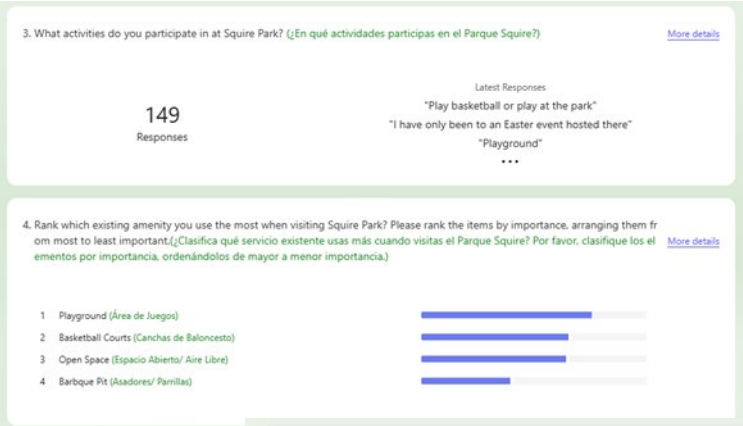
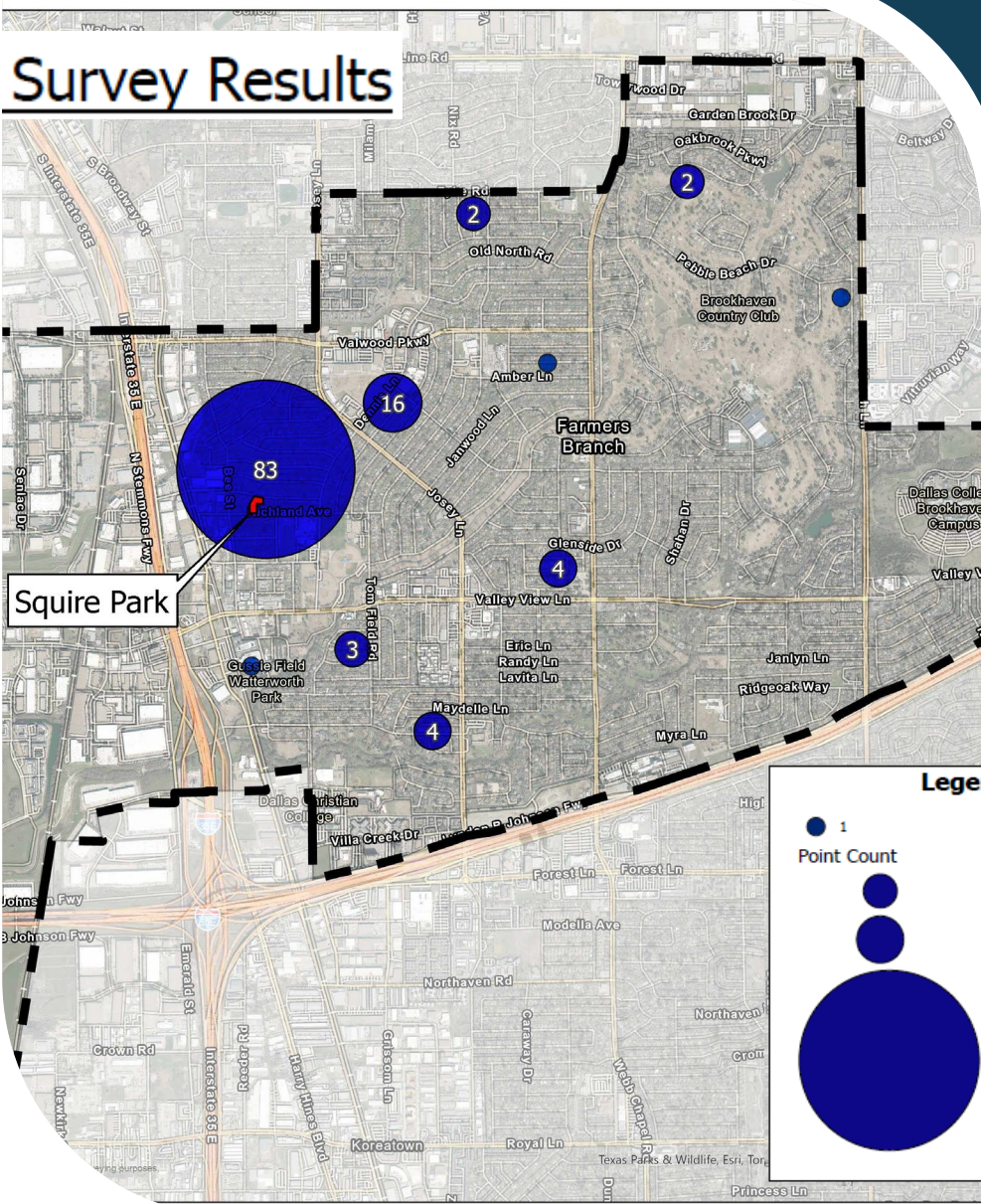
April 24th and April 28th

Transform Squire Park Public Outreach Efforts

Survey Results

149 residents took the survey. The map depicts the highest concentration of survey responses around Squire Park.

Survey Results





Efforts' Outcome

Key Takeaways

Here's what Squire Park users envision:

- A dedicated walking path
- Sports courts for activities such as basketball, soccer, and pickleball
- A splashpad
- An upgraded playground

Next Steps

Staff is seeking direction from the Council to proceed with creating final design that incorporates feedback provided by residents.

Discussion & Direction



FARMERS BRANCH
TEXAS