



RESOLUTION NO. 2014-045

A RESOLUTION OF THE CITY COUNCIL OF THE CITY OF FARMERS BRANCH, TEXAS, ADOPTING A SITE PLAN FOR A LOT 3, BLOCK A, MIDWAY ALPHA CENTER ADDITION, AN ADDITION TO THE CITY OF FARMERS BRANCH, DALLAS COUNTY, TEXAS, AND LOCATED IN PLANNED DEVELOPMENT NO. 64 (PD-64); AND PROVIDING AN EFFECTIVE DATE

WHEREAS, the owner of the property described as Lot 3, Block A, Midway Alpha Addition, an Addition to the City of Farmers Branch, Texas (“the Property”), which is located within Planned Development No. 64 (PD-64), has applied for approval of a detailed site plan for the Property; and

WHEREAS, having received the recommendation of the Planning and Zoning Commission that the detailed site plan should be approved as requested, the City Council of the City of Farmers Branch, in the exercise of the legislative discretion, has concluded that the requested detailed site plan for the Property should be approved;

NOW, THEREFORE, BE IT RESOLVED BY THE CITY COUNCIL OF THE CITY OF FARMERS BRANCH, TEXAS THAT:

SECTION 1. In addition to the development and use regulations applicable of within Planned Development No. 64 (PD-64) applicable to the Property, the Property shall be developed substantially in accordance with the Detailed Site Plan attached hereto as Exhibit “B” and the Landscape Plan attached hereto as Exhibit “C” which exhibits are incorporated herein by reference and are hereby approved.

SECTION 2. This resolution shall become effective immediately upon its approval.

PASSED AND APPROVED BY THE CITY COUNCIL OF THE CITY OF FARMERS BRANCH, TEXAS, THIS 17th DAY OF JUNE, 2014.

ATTEST:

APPROVED:

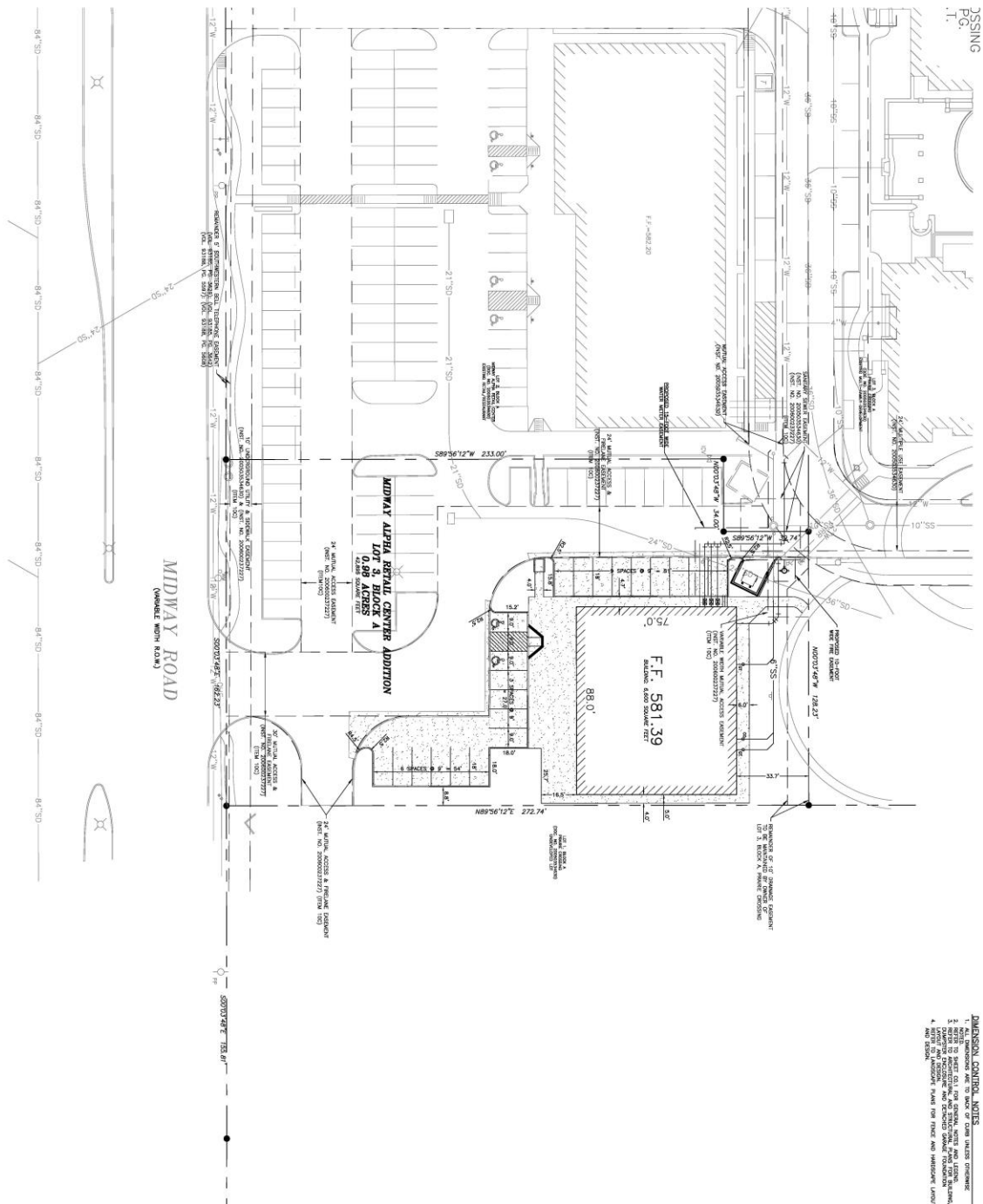
Angela Kelly, City Secretary

William P. Glancy, Mayor

APPROVED AS TO FORM:

Peter G. Smith, City Attorney
(kbl:5/9/14:66087)

FILE: X:\Project\2014\04-011-TX-Farmers Branch-Midway Corridor\AutoCAD\Title_Revision\14011-C1.1.dwg
USER: dilaachear DATE/TIME: May 03, 2014 - 8:11pm



DIMENSION CONTROL NOTES

1. ALL DIMENSIONS ARE TO BACK OF CURB UNLESS OTHERWISE NOTED.
2. REFER TO SHEET CO.1 FOR GENERAL NOTES AND LEGEND.
3. REFER TO ARCHITECTURAL AND STRUCTURAL PLANS FOR BUILDING, DRIVEWAY ENCLOSURE AND DETACHED GARAGE FOUNDATION LAYOUT AND DESIGN.
4. REFER TO LANDSCAPE PLANS FOR FENCE AND HARDSCAPE LAYOUT AND DESIGN.



Engineer or Inventor	SAIB	
Drawn by	DTB	
Date Printed	5/6/2014	
Issued for Filing or Mailing	*	
Issued for Patent Application	*	
Issued for Continuation	*	
Revisions:		
#	DATE	COMMENTS
A	04/14/2014	1ST FROM CIT
B	04/22/2014	2ND FROM CIT

© 2014, Infratec engineering, LLC

The engineering works, finished levels and new process of Pricol Engineering, LLC, may not be commercial, or used without express written permission. No reproduction or translation of any of the engineering work including without limitation the computerized data, drawings, specifications, or other information, is permitted or allowed without the express written consent of Pricol Engineering, LLC. Any use of the engineering work without the express written consent of Pricol Engineering, LLC, is prohibited. The information contained herein is confidential and its disclosure to third parties without the express written consent of Pricol Engineering, LLC, is prohibited. The information contained herein is confidential and its disclosure to third parties without the express written consent of Pricol Engineering, LLC, is prohibited. The information contained herein is confidential and its disclosure to third parties without the express written consent of Pricol Engineering, LLC, is prohibited.

MIDWAY COMMONS
MIDWAY RD 430' N/O ALPHA RD
CITY OF FARMERS BRANCH, DALLAS COUNTY, TEXAS

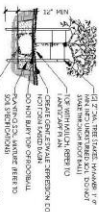
Hpcivil engineering, LLC.
339 ALPHA ROAD, SUITE 300 DALLAS, TEXAS 75240
972.701.9636 • 972.701.9639 FAX
TX REGISTERED ENGINEERING FIRM F-12600
www.hpcivileng.com

SHEET CONTENTS:
DIMENSION
CONTROL PLAN
SHEET NO.
C1.1
HPCE #14-011

TEL: 234-014-FL/2814154-112 IP: 234-11-Mary Connors - Firmus Brachidactylus 11-gallinidae
 JGF: 02-04-24 DATE: May 05, 2014 - 4:52pm

LANDSCAPE NOTES

ALPHABETICALLY BY SURVIVAL TO THE END OF THE STUDY. THE SURVIVAL CURVE FOR THE PATIENTS WHO WERE TREATED WITH THE COMBINATION OF 5-FU AND LEVOPROLACTAM IN THE LABORATORY OF CHEMOTHERAPY OF THE INSTITUTION OF MEDICAL RESEARCHES OF THE ACADEMY OF MEDICAL SCIENCES OF THE USSR (Fig. 1) was significantly better than the survival curve for the patients who were treated with 5-FU alone in the laboratory of the Institute of Oncology of the USSR Academy of Medical Sciences (Fig. 2). The results of the study of the effect of the combination of 5-FU and levoprolactam on the survival of patients with gastric cancer are shown in Table 1. The results of the study of the effect of the combination of 5-FU and levoprolactam on the survival of patients with gastric cancer are shown in Table 1. The results of the study of the effect of the combination of 5-FU and levoprolactam on the survival of patients with gastric cancer are shown in Table 1.



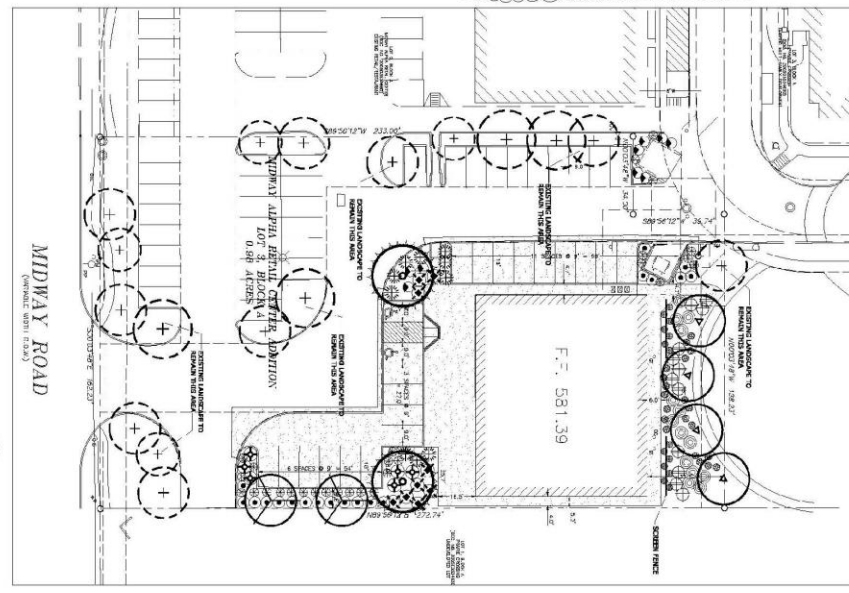
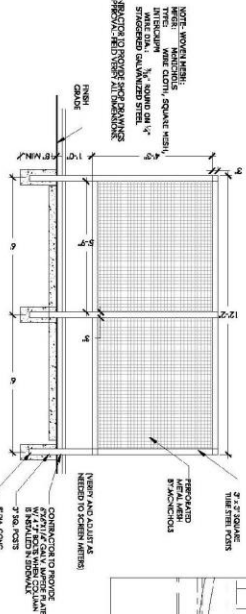
TREE PLANTING



SHRUB PLANTING



BOULDER DETAIL

[illegible]PRELIMINARY LANDSCAPE PLAN 

0' 20' 40'
SCALE 1" = 20'.0'