



DALLAS  
NEPHROLOGY  
ASSOCIATES

HAGGAR

South College

EMPLOYBRIDGE  
HAGGAR  
CLOTHING  
HYPHEN

FORGE  
PARK WEST  
972-435-0810



SIGN HERE

South College

SIGN HERE

1901

South College  
1901  
1901  
1901

South College  
1901  
1901  
1901

South College  
1901  
1901  
1901

44'-4"

# South College

77 1/2"  
59"

### A SIGN ELEVATION

SCALE 3/16"=1'-0"

QTY: 2  
3" DEEP FACE LIGHTED CHANNEL LETTERS & LOGO. WHITE TRIM CAP & WHITE RETURNS, 3/4" RETAINER.  
LETTERS MOUNTED ON 10" X 2" ALUMINUM WIREWAYS PAINT COLOR **TBD**

# South College

3/4" MOUNTING HOLES

1" POWER HOLES

ELECTRICAL CONDUIT TO PENETRATE ABOVE CEILING & BELOW ROOF



ROOF TOP PARAPET

224'-0"



100'-0"



### B SOUTH ELEVATION

SCALE 1/32"=1'-0"

**ArtOGRAFAX**  
1233 Round Table Dr.  
Dallas, Texas 75247  
214.349.1075 Phone  
214.349.0877 Fax  
www.artografax.com

APPROVED BY:

DATE:

**PROJECT:**  
SOUTH COLLEGE  
1505/1507 LBJ  
FARMERS BRANCH, TX.  
**CLIENT:**  
SOUTH COLLEGE

NOTES:

**DESIGNER:**  
GREG BRACKE  
**SALESMAN/PM:**  
STEVE BENSON

REVISIONS:

ELECTRICAL:

VOLTS:

AMPS:

CIRCUITS: WET \_\_\_ DRY \_\_\_



JOB NUMBER:  
# \_\_\_\_\_

FONTS:

FILE NAME:  
SOUTH COLLEGE R1

SIGN TYPE:

DATE:  
8.19.24

PAGE

1

.063 ALUMINUM RETURNS  
PAINT SW 7045 3/4"

3/16" WHITE ACRYLIC  
FACES.

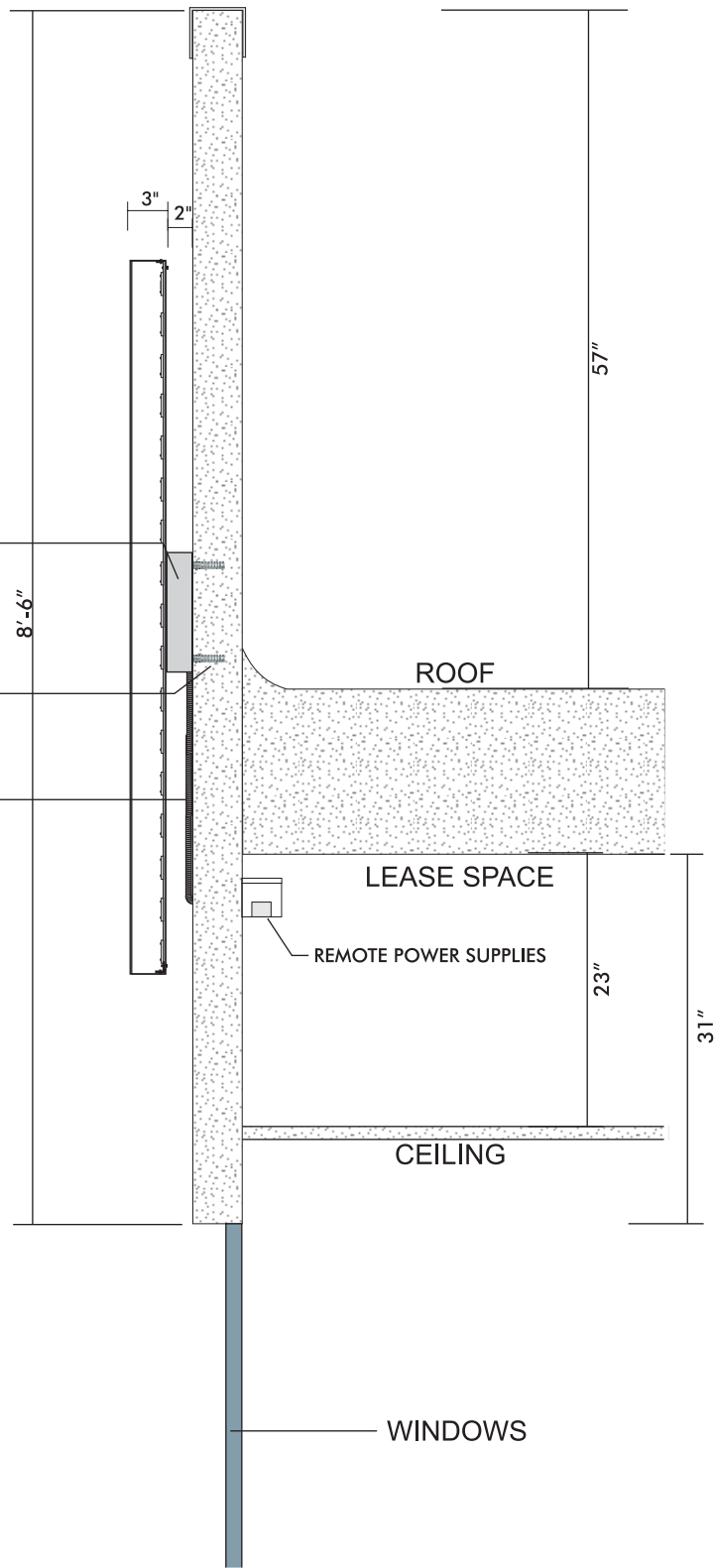
1/8" ALUMINUM  
BACKS.

SLOAN WHITE L.E.D.


2" X 10" WIREWAY WITH

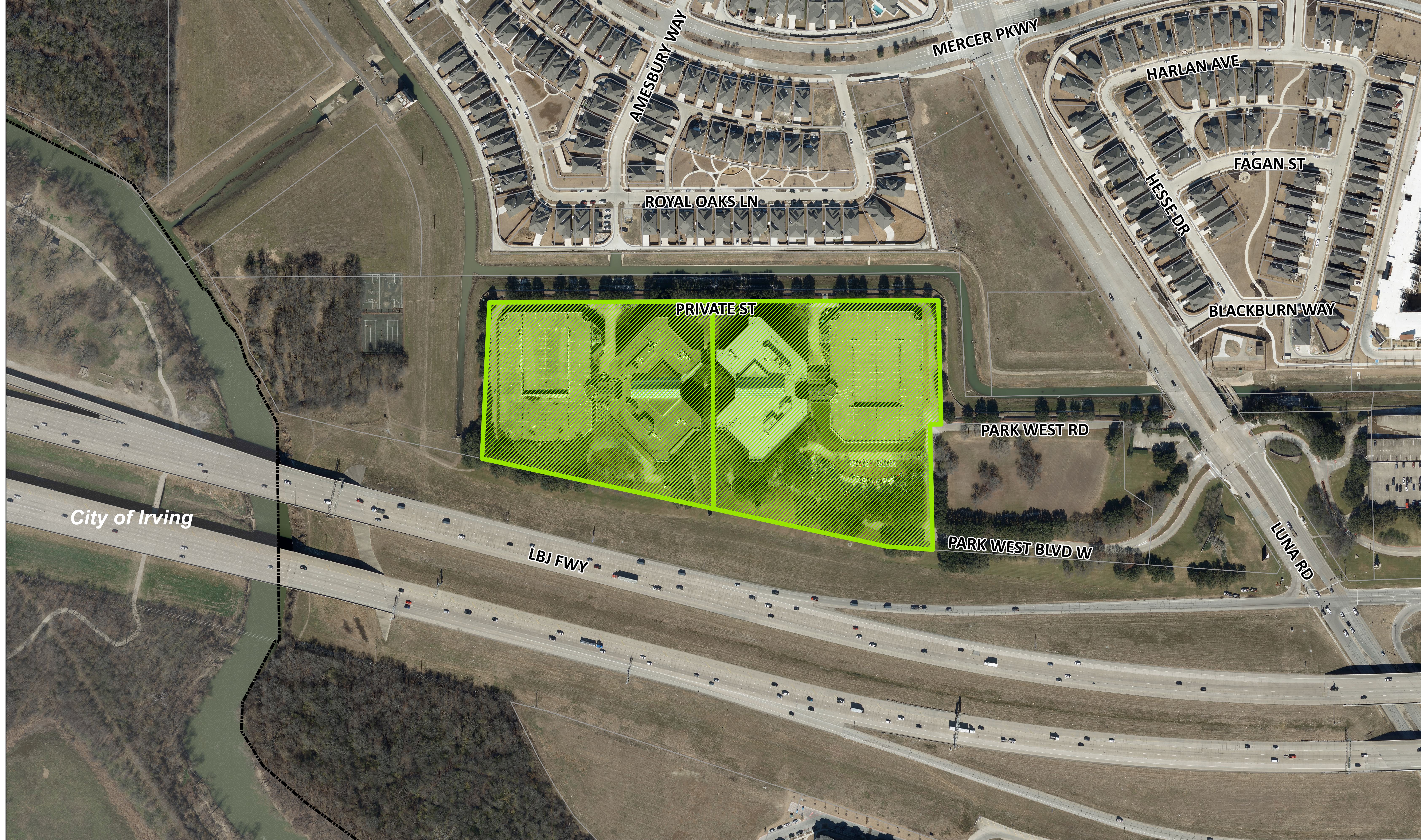
1/2" BOLTS/ANCHORS

ELECTRICAL CONDUIT  
TO MAIN POWER.  
RUN BEHIND "G"



**D** SECTION DETAIL  
SCALE 3/4"=1'-0"

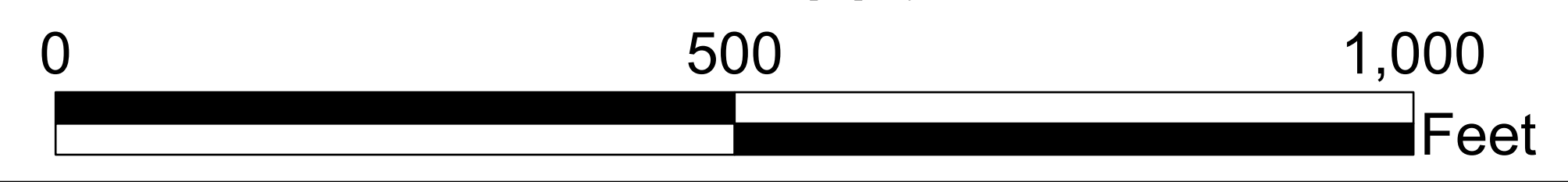
<b>ArtOGRAF</b> 1233 Round Table Dr. Dallas, Texas 75247 214.349.1075 Phone 214.349.0877 Fax www.artograf.com	<b>APPROVED BY:</b>  <b>DATE:</b>	<b>PROJECT:</b> SOUTH COLLEGE 1505/1507 LBJ FARMERS BRANCH, TX. <b>CLIENT:</b> SOUTH COLLEGE	<b>NOTES:</b>	<b>DESIGNER:</b> GREG BRACKE <b>SALESMAN/PM:</b> STEVE BENSON	<b>REVISIONS:</b>	<b>ELECTRICAL:</b>  <b>VOLTS:</b>  <b>AMPS:</b>  <b>CIRCUITS:</b> WET ___ DRY ___		<b>JOB NUMBER:</b> #-----	<b>FONTS:</b>	<b>FILE NAME:</b> SOUTH COLLEGE R1	<b>SIGN TYPE:</b>
	<b>DATE:</b> 8.19.24										<b>PAGE</b>



- Subject Property
- Tax Parcels
- City Limit

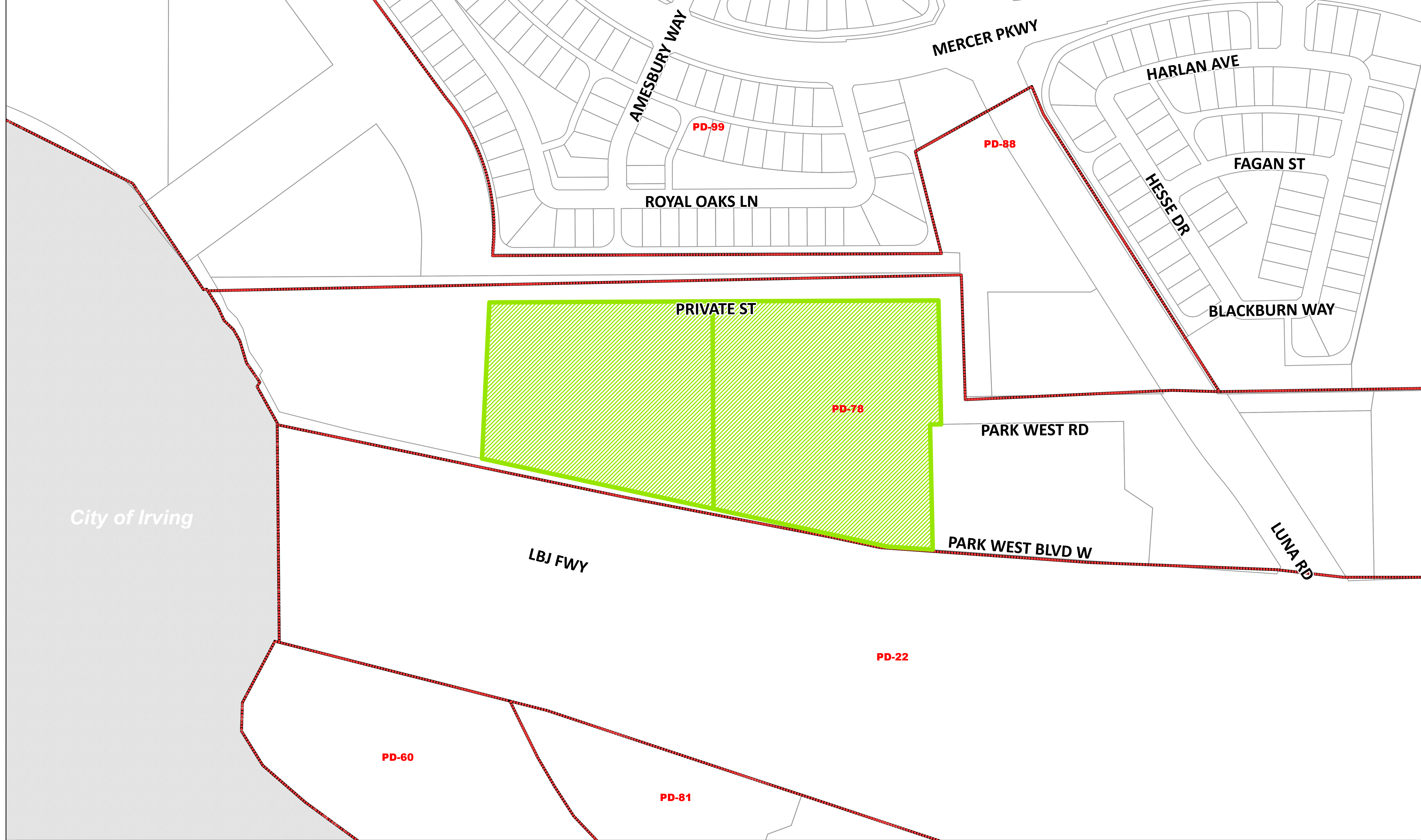
## 24-SP-07 Aerial Map

### 1501 and 1505 LBJ Freeway



This product is for informational purposes only and may not have been prepared for or be suitable for legal, engineering, or surveying purposes. It does not represent an on-the-ground survey and represents only the approximate relative location of property boundaries. Texas HB1147, Effective 9/1/2011



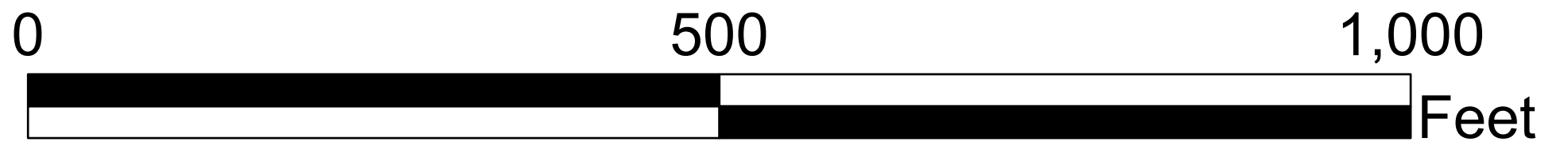


City of Irving

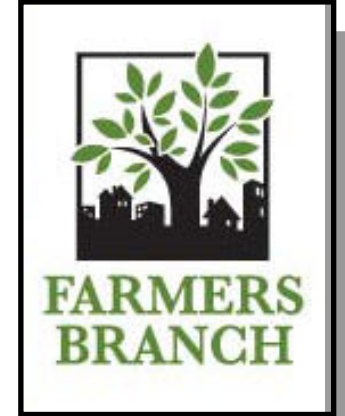
# 24-SP-07 Location Map

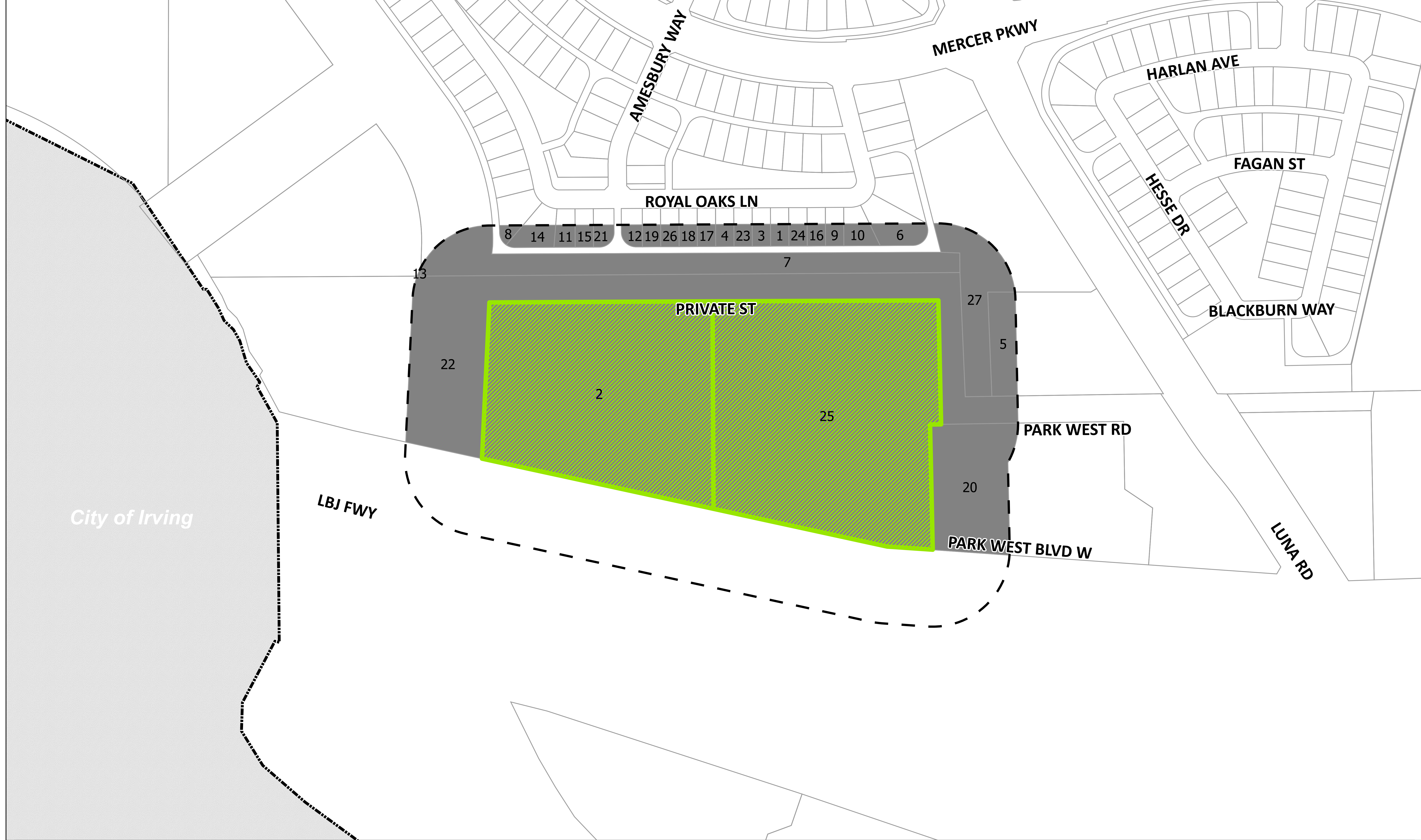
## 1501 and 1505 LBJ Freeway

- ▬ Subject Property
- - - Zoning
- Tax Parcels
- - - City Limit



This product is for informational purposes only and may not have been prepared for or be suitable for legal, engineering, or surveying purposes. It does not represent an on-the-ground survey and represents only the approximate relative location of property boundaries. Texas HB1147, Effective 9/1/2011

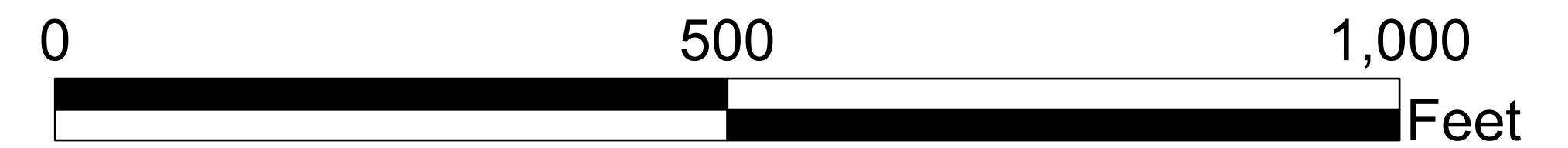




- 200FT Notification
- Subject Property
- Tax Parcels
- ⦿ City Limit

## 24-SP-07 Notification Map

### 1501 and 1505 LBJ Freeway



This product is for informational purposes only and may not have been prepared for or be suitable for legal, engineering, or surveying purposes. It does not represent an on-the-ground survey and represents only the approximate relative location of property boundaries. Texas HB1147, Effective 9/1/2011

