



# Animal Shelter Expansion

Regular City Council Meeting | September 2, 2025

---

Requested By: Community Services Department



# Current Shelter Layout

**1** 39 Total Dog Kennels

**2** 30 Total Cat Kennels

**3** 1 Cat Room

**4** 3 Free Roam Dog Rooms or Flex Rooms

# Opportunities

Expand Humane  
Housing Capacity

Improved staff  
productivity with new  
layout

Addition of a cat  
solarium

Expanded Get to Know  
Areas for Adoptions

Increase visibility of  
adoptable pets

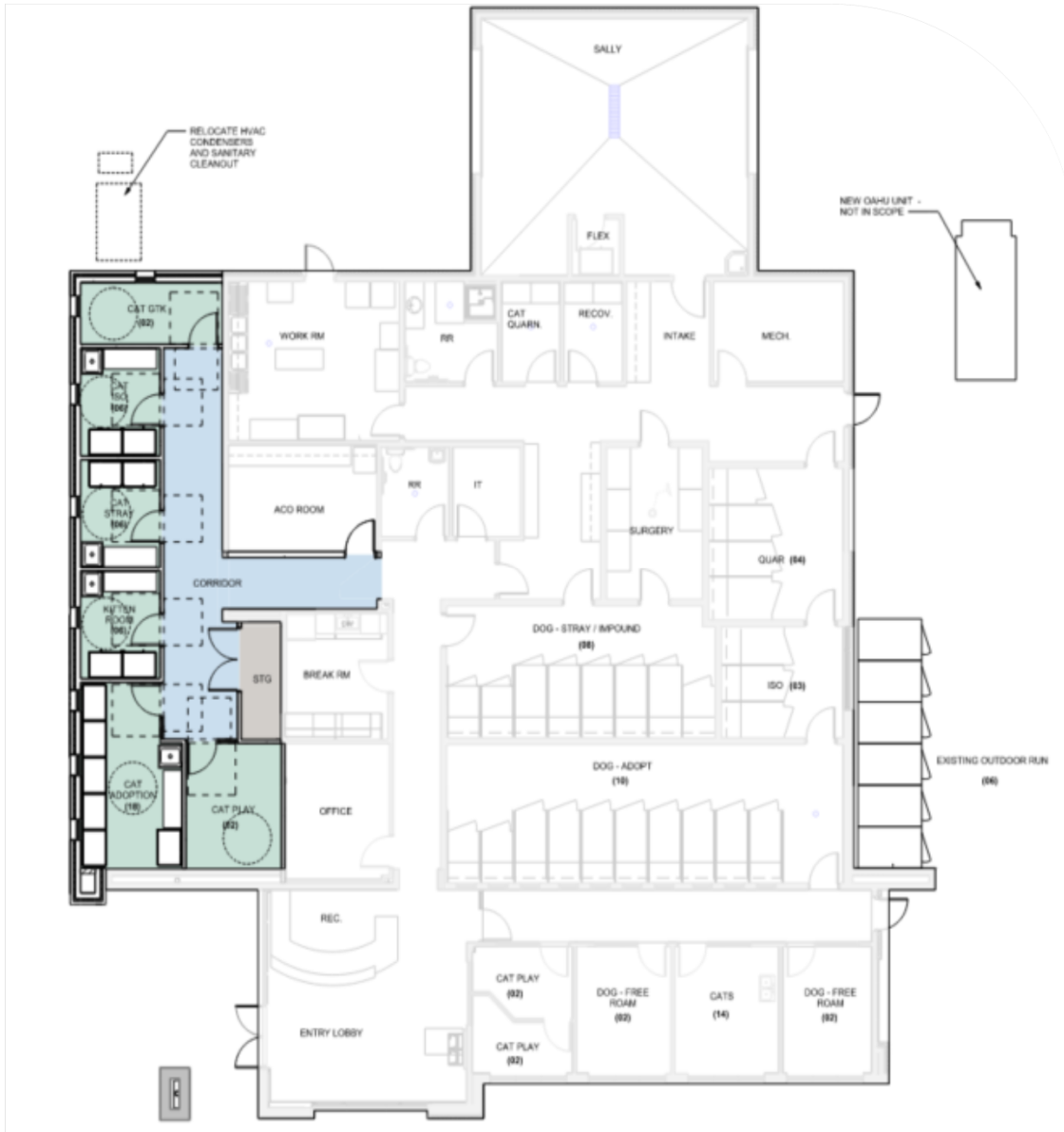


**FARMERS BRANCH**  
TEXAS

# Animal Shelter Addition of 1,055 square feet

**Provides for a capacity of up to 40 cats and kittens, and includes:**

- A cat playroom,
  - An adoption room,
  - A meet-and-greet room, and
  - 3 holding rooms.
- ❖ Allows for reallocation of 6 previously utilized cat spaces to increase capacity for dogs and puppies from 39 to 45 spaces.



# Financial Impact

## Needs Assessment

---

Needs assessment conducted by Quorum Architects:

- Current Shelter Size: 5,897 square feet
- With Proposed Expansion : 6,952 square feet
- Cost Estimate for addition : \$1,305,250
- Current Animal Shelter donation for the addition is \$1.50 million

## Project

---

\$1.5 million donation from the estate of Dorothy Ray Holley is dedicated solely to a cat solarium and the updating of the animal shelter facility, with an approximate timeline of 24 months from the start of construction to completion.

- Cat Solarium Addition of 1,055 square feet
- Roof replacement of the existing shelter



# Questions

---



**FARMERS BRANCH**  
TEXAS