



FARMERS
BRANCH

Camelot Landfill Construction Project

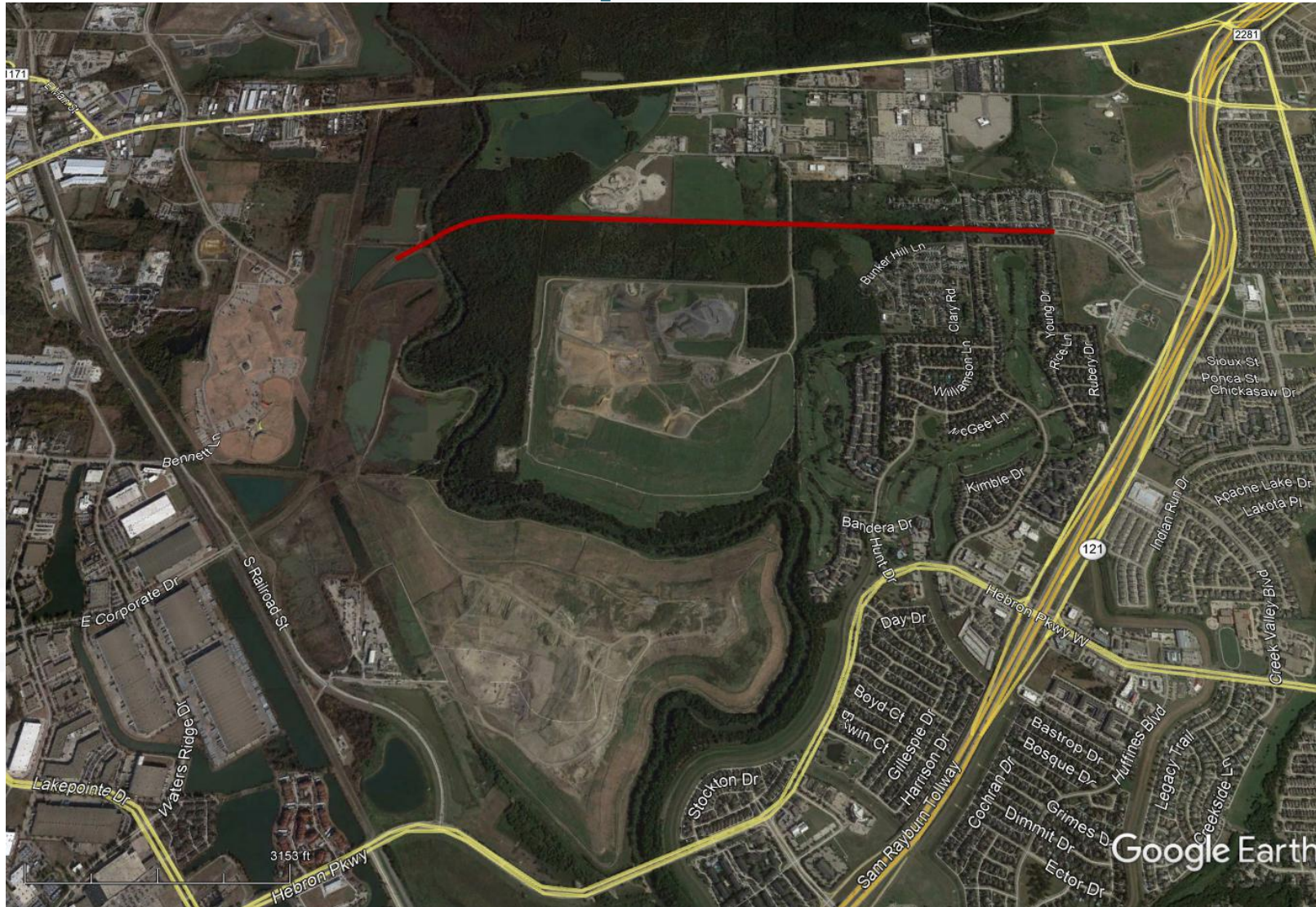
Change Order #1



Background

- City received approval from the Texas Commission on Environmental Quality approving the permit amendment for Camelot Landfill in August 2017
 - Passage of HB 281
 - Settlements with City of Lewisville and Carrollton
- Settlement with Lewisville required zoning approval and engineering site plan approval from Lewisville
- At that time, DFW Landfill owned by Waste Management had “10 years” of life remaining
- City of Lewisville had announced planned expansion of Corporate Drive in 2021 or 2022

Camelot Landfill and Corporate Drive



Camelot Landfill Scalehouse and Maintenance Facility

- Current waste volume: ~3,700 tons per day
- Current scalehouse is a tiny two story structure with one scale
 - Operational bottleneck
- Installed two temporary scales handle additional volume
- Current maintenance facility is an outdoor concrete pad next to two large cargo containers
- New scalehouse must be constructed prior to Corporate Drive extension

City of Farmers Branch Approvals and Actions

- In 2018, City Council awarded a design-build contract to Weaver Consultants Group and Anchor Construction for the construction of a new scalehouse and maintenance facility
 - Not to exceed amount of \$4,886,900
- Per City of Lewisville zoning ordinance, any change to the engineering site plan requires going through the rezoning process
- Met with City of Lewisville staff to inform them of pending submission and receive initial comments
- Submitted zoning change request and updated engineering site plan in August 2018
 - Approved in January 2019

What happened during that time?

- Republic Services mothballed Lewisville Landfill
- Republic Services sold Austin hauling company to Waste Management; Waste Management sold Dallas-Ft. Worth hauling company to Republic Services
- Waste Management announced there was approximately “2 years” of life remaining at DFW Landfill
 - Was 8-10 years based on conversations 3-6 months prior
- This was big news to Lewisville and Farmers Branch
 - Lewisville receives host fee payments from all three landfills

What happened during that time?

- City of Lewisville requested
 - Wheel wash station to minimize mud tracked onto Lewisville roads
 - Increase in the amount of concrete
 - Added large meter, valves, and vault boxes
- Republic Services and City staff discussions regarding new DFW Landfill timeline for closure
 - Added scales and space to scalehouse
 - Added third bay to maintenance facility
 - Changed configuration and layout of maintenance facility
 - Changed electric line height to minimize potential damage from inattentive drivers

Contract Requirements

- None of these items were in the initial configuration used by WCG and Anchor to develop their cost estimate for the project
- Original Landfill Operations Agreement with Republic Services obligate City to construct a new scalehouse and maintenance facility
- 3rd Amendment to Landfill Operations Agreement limited City's contribution to \$5.5M
 - Any additional costs are the responsibility of Republic Services
- WCG and Anchor Construction have revised the cost estimate to include the Lewisville and operational needs.

Change Order #1

- Change Order #1: \$853,100
- New Total for landfill facilities: \$5,720,000
- City portion: \$5,500,000

