

A person is holding a large, rectangular sign made of brown cardboard. The sign has the words "WE NEED" on the top line and "A CHANGE" on the bottom line, both written in a bold, black, hand-drawn font. The person's hands are visible at the top corners of the sign. The background is a large, out-of-focus crowd of people at what appears to be a public gathering or protest. In the distance, there are buildings and trees under a bright sky.

WE NEED
A CHANGE

Criminal Justice and Mental Health

DALLAS
AREA
RAPID
TRANSIT

DART



.....
.....
.....
.....











.....
.....
.....













.....
.....
.....



DALLAS COUNTY JAIL



Those who are jailed and unhoused are more likely to be booked into jail 2 or more times in a year

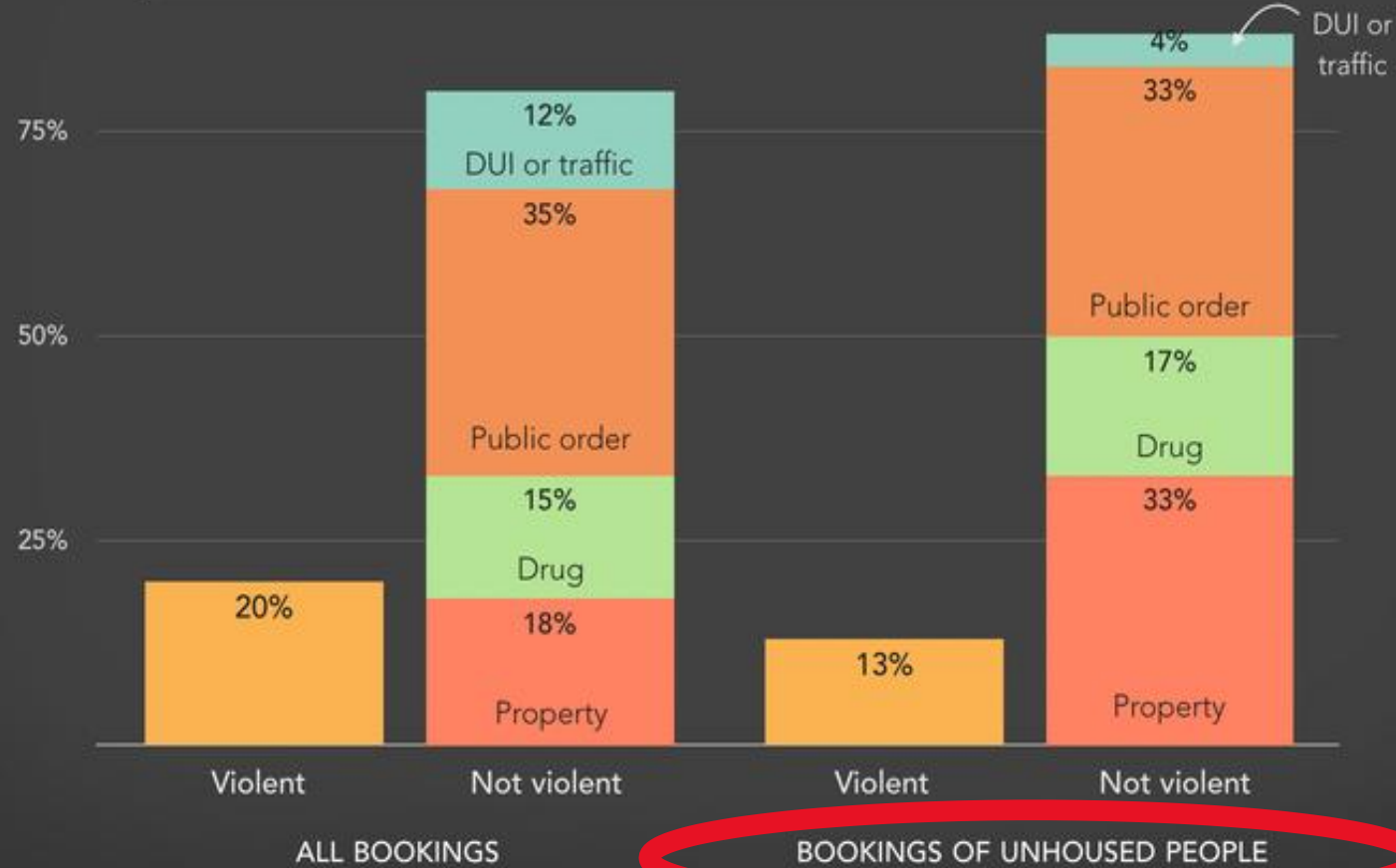
Source: https://www.prisonpolicy.org/blog/2025/02/11/jail_unhoused_bookings/

6,004 unique unsheltered individuals booked in 2025; accounted for 5,758 repeat bookings (2 or more) in 2025

Unhoused people are less often jailed for “violent” charges compared to others, and more often jailed for charges related to survival behaviors

Percent of people booked into a sample of 173 local jails that recorded unhoused status at booking, between July 1, 2022 and June 30, 2023, by top charge type and housing status

TOP CHARGE CATEGORY AMONG PEOPLE JAILED, BY HOUSING STATUS



Source: Jail Data Initiative. For details see: www.prisonpolicy.org/blog/2025/02/11/jail_unhoused_bookings/

Supportive housing can
decrease arrests of
unhoused individuals by
40%

Our homeless jail
population could drop by
40% (2402 unsheltered
individuals) within two
years

Homeless repeat bookings
will drop by 40% (2303)
within two years

PARKLAND



7,367 unique unsheltered
patients went to Parkland
Hospital in 2025

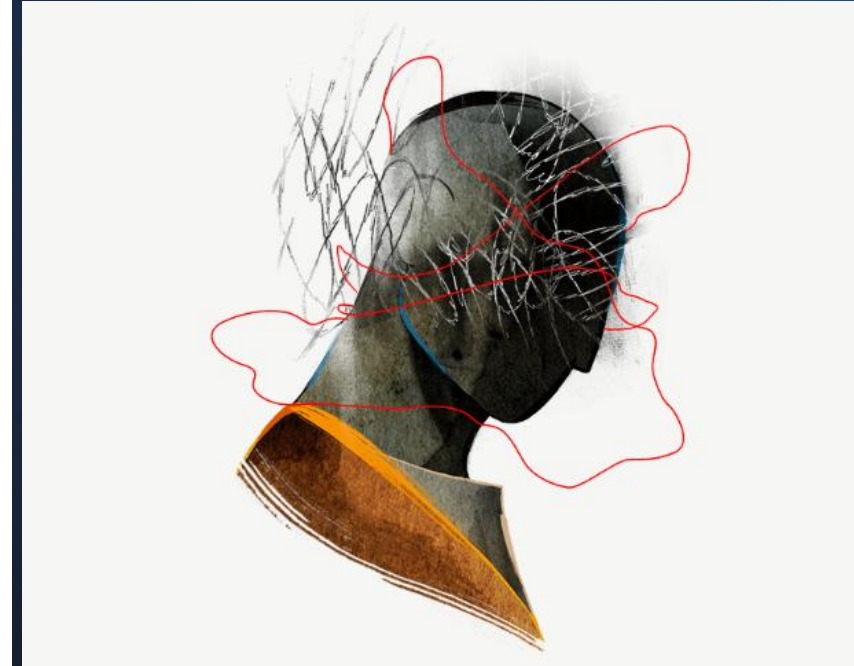
Parkland saw 52,457
cases which cost it
\$28,189,126 in 2025

Supportive Housing
decreases the number of
emergency department
visits by 80% within 18
months

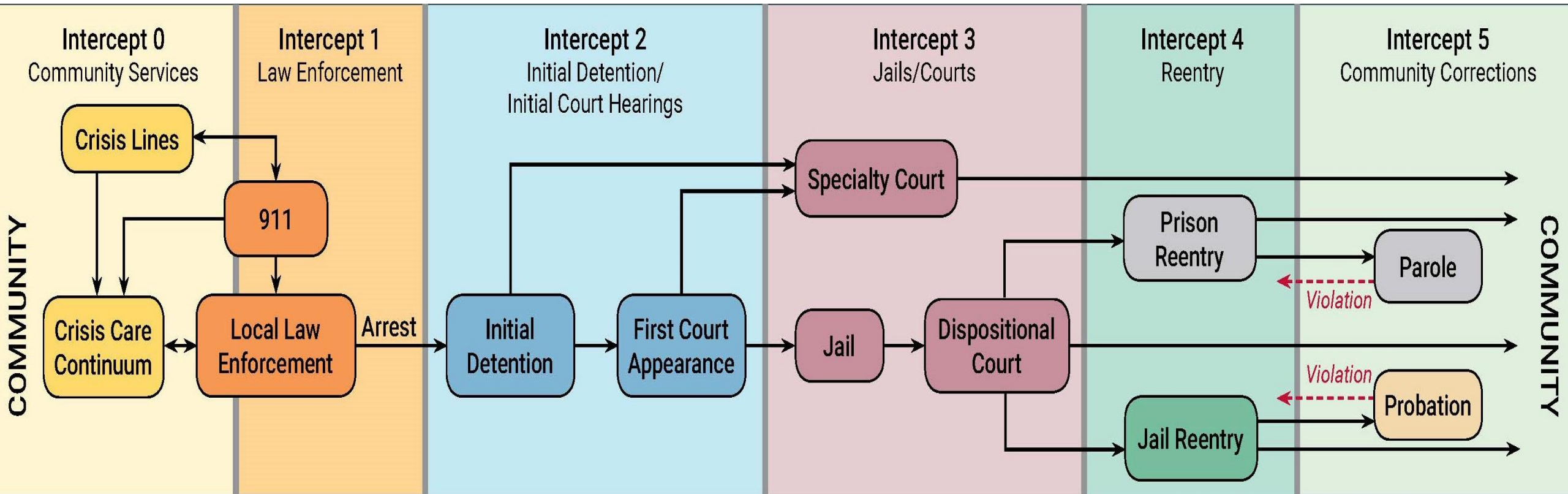
Supportive housing can decrease the number of unsheltered patients by 80% (5855 patients) within 18 months

Crisis Conversations

- People with serious mental illnesses booked into jails annually:
 - 1.8 million in United States
 - 25,376 in Dallas County
- Incarcerated **eight** times longer
- Cost **seven** times higher.



SEQUENTIAL INTERCEPT MODEL



CIT Coordinator

**Clinical Social Worker
Corrections Counselor**

Team Leader

**Assessor
Court Specialist
Peer Specialist**

**Specialized
Probation
Officer**

Jail Diversion

Early Outcomes in Miami

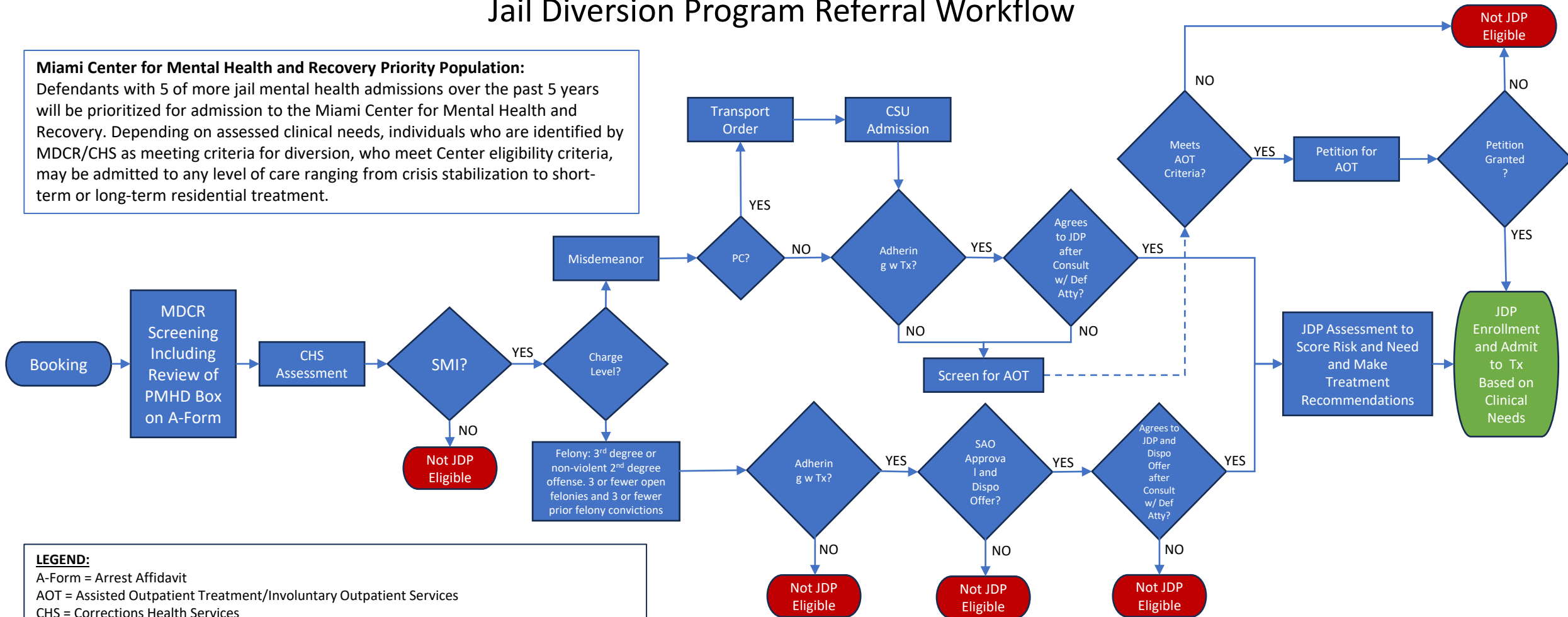
- Recidivism rates dropped from 75% to 20% annually
- More than 75% reduction in jail bookings
- Over 31,000 jail days saved (84 years in jail bed days)

11TH Judicial Circuit Criminal Mental Health Project

Jail Diversion Program Referral Workflow

Miami Center for Mental Health and Recovery Priority Population:

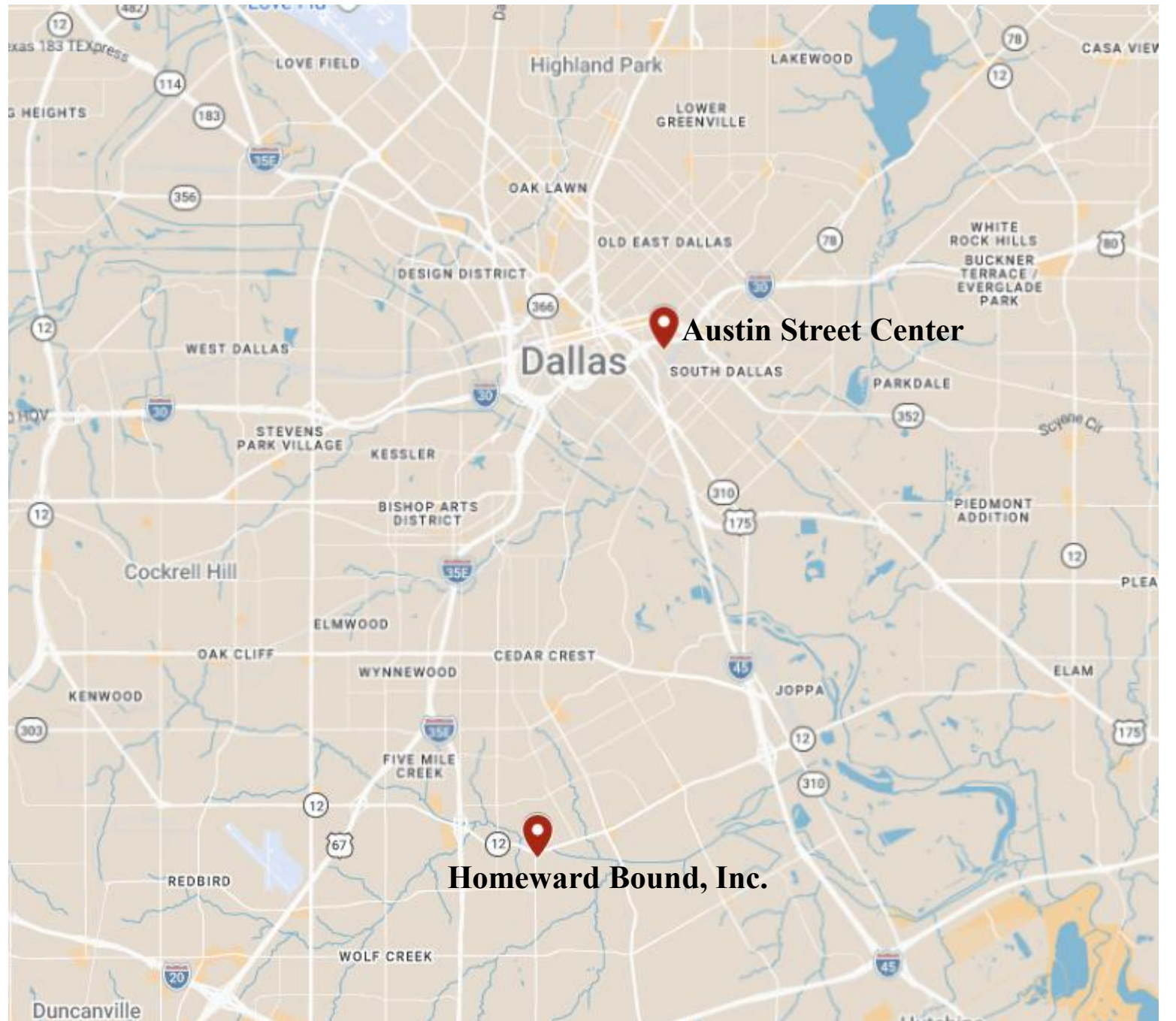
Defendants with 5 or more jail mental health admissions over the past 5 years will be prioritized for admission to the Miami Center for Mental Health and Recovery. Depending on assessed clinical needs, individuals who are identified by MDCR/CHS as meeting criteria for diversion, who meet Center eligibility criteria, may be admitted to any level of care ranging from crisis stabilization to short-term or long-term residential treatment.



LEGEND:

A-Form = Arrest Affidavit
 AOT = Assisted Outpatient Treatment/Involuntary Outpatient Services
 CHS = Corrections Health Services
 CSU = Crisis Stabilization Unit
 JDP = Jail Diversion Program
 MDCR = Miami Dade Corrections and Rehabilitation Department
 PC = Certificate of Professional Initiating Involuntary Examination
 PMHD = Possible Mental Health Defendant
 SAO = State Attorney's Office
 SMI = Serious Mental Illness (e.g., schizophrenia, bipolar disorder, major depressive disorder)

Proposed and Current Deflection Centers in Dallas County



SOURCES

- James, D. and Glaze, L., *Mental Health Problems of Prison and Jail Inmates*, Special Report (BJS September 2006).
- Yager, Alison. *Mental Illness and Criminal Justice in Florida: The Case for Medicaid Expansion*. Florida Health Justice Report. (February 2024).
- Meadows Mental Health Policy Institute. *Smart Justice: Texas Needs More Effective Alternatives Than Jail to Treat Mentally Ill*.
- Jaspers, Bret. *Mental health needs are exploding in Dallas, but new jail diversion center underutilized*. KERA News. (February 16, 2023).
- Miami Center for Mental Health and Recovery.
<https://miamifoundationformentalhealth.org/wp-content/themes/mcmhr-child/assets/pdf/MCMH-Overview.pdf>