



WOVEN HEALTH[®] CLINIC
integrated community healthcare

A Legacy of Compassionate,
Community-Rooted Care



www.wovenhealth.org

About Us

Woven Health Clinic: A Legacy of Compassionate, Community-Rooted Care

Woven Health Clinic began as a grassroots effort to address a critical gap in healthcare access for under-resourced individuals.

Founded in 1992 and incorporated in 1993 as On Eagles Wings, the Clinic was established by Webb Chapel United Methodist Church and Chapel Hill United Methodist Church, who recognized an urgent need for compassionate, affordable healthcare in the community.

The Clinic initially operated one evening per week and some weekends, staffed entirely by dedicated medical volunteers.



Our Mission

To provide affordable, quality, patient-centric healthcare focused on maintaining wellness and preventing disease to the uninsured or underinsured.

- *Our patients are our priority*
- *We act with integrity.*
- *We treat our patients with compassion and respect.*
- *We embrace innovation and diversity.*
- *We are affordable and inclusive.*
- *We are responsive to the needs of our patients and community.*



WOVEN HEALTH[®] CLINIC
integrated community healthcare

Facilities

Carrollton Clinic

- 4325 N Josey Lane
- Plaza 3, Suite 111
- Carrollton, Texas 75010
- carrollton@wovenhealth.org
- [\(469\) 574-2022](tel:(469)574-2022)

Farmers Branch Clinic

- 1 Medical Pkwy Suite 149
- Farmers Branch, Texas 75234
- farmersbranch@wovenhealth.org
- [\(972\) 484-8444](tel:(972)484-8444)





WOVEN HEALTH[®] CLINIC
integrated community healthcare

Our Medical Staff



Dr. Leesa Condry

Medical Director



Dr. Namrata Babaria

Chief Physician



Poonam Misra

Family Nurse Practitioner



Ellen Malloy

Women's Nurse
Practitioner



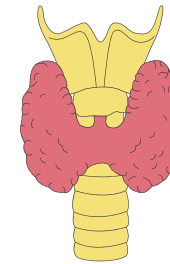
WOVEN HEALTH[®] CLINIC
integrated community healthcare

CONDITIONS TREATED

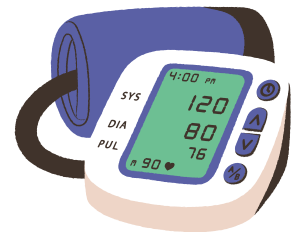
Chronic Disease Management



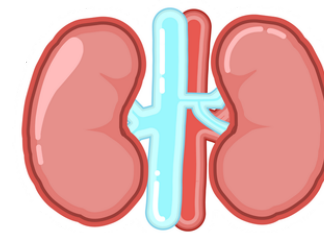
- *Diabetes*



- *Thyroid*



- *Hypertension*



- *Kidney Disease*



- *Mental Health*



WOVEN HEALTH[®] CLINIC
integrated community healthcare

Our Services

Comprehensive Care

- ***Primary Care***
- ***Women's Health***
- ***Men's Health***
- ***Behavioral Health***
- ***Nutrition Counseling***



The Impact of Healthcare for the Uninsured in Farmers Branch

Statistics for Farmer's Branch

- *UNINSURED + ACCESS*
- *21–24% of Dallas County adults are uninsured*
- *That's significantly higher than nearby counties like Denton (~10–11%)*
- *Texas overall has the highest uninsured rate in the U.S.*

Woven Health creates access to care = stronger community + lower costs

- *18% uninsured adults*
- *85% delay or skip care*
- *Increased ER visits*
- *Rising chronic disease*





WOVEN HEALTH[®] CLINIC
integrated community healthcare

Key Accomplishments

- 1. Successful Mental Health Outcomes Through the Mind Matters Wellness Program**
 - *Achieved a 66.5% average remission rate for patients receiving mental health services.*
- 2. Successfully Completed 11 Pop-up Clinics with Metrocrest Services**
 - *63 unique patients served through Pop-ups*
- 3. Increased Access to Preventive Screenings and Specialty Care**
 - *Expanded mobile mammogram and cervical cancer screenings.*
- 4. Continued Successful Partnership with Texas A&M School of Dentistry to enhance dental education and referrals, addressing oral health as a key component of overall well-being.**
- 5. Clinical Excellence and Chronic Disease Management Success**
 - *Achieved measurable improvements in patient health outcomes and recognized for the 8th year in a row from the National Commission on Quality Assurance*



WOVEN HEALTH[®] CLINIC
integrated community healthcare

Partnerships

- *Metrocrest Hospital Authority (MHA)*
- *American Heart Association*
- *Dallas Medical Center*
- *Carrollton Regional Medical Center*
- *Moncrief Cancer Institute*
- *UT Southwestern Hospital*
- *Methodist Mobile Mammogram*
- *Moncrief Cancer Institute*
- *Bridge Breast Network*
- *Essilor Vision Foundation*
- *Cannenta Center for Healing & Empowerment*
- *Metrocrest Services*
- *Hope Cottage/CeCe's Place*
- *The City of Farmers Branch*
- *The City of Carrollton*
- *The City of Coppell*
- *The Town of Addison*
- *Touchstone Imaging*
- *LabCorp*
- *Direct Relief*
- *Americares*
- *The Civic League*
- *Carrollton Women's Foundation*
- *Farmers Branch Women's Club*
- *Texas A&M School of Dentistry*
- *United Way of Metropolitan Dallas*



WOVEN HEALTH[®] CLINIC
integrated community healthcare

Expanding Access Through Direct Primary Care

What is Direct Primary Care?

- *A membership-based model that offers patients unlimited access to primary care-without insurance barriers, copays, or surprise bills.*

Our DPC Program Highlights:

- *Low monthly membership fees for individuals*
- *Unlimited visits, same day/next day access, inperson or telehealth*

Why it Matters?

- *Supports working individuals who are uninsured or underinsured*
- *Keeps employees healthier and more productive*
- *Strengthens long-term financial sustainability for our clinic*

Funds from our Direct Primary Care memberships are reinvested directly into our community health programs, helping us serve more patients.



WOVEN HEALTH[®] CLINIC

integrated community healthcare

Presented by : **Executive Director
Sheridan Robinson**

SRobinson@wovenhealth.org
www.wovenhealth.org

Thank You!