



Transform Squire Park

City Council | September 16, 2025

Requested By: Councilmember Omar Roman



Transform Squire Park

Background



Located in the Valwood Park Neighborhood



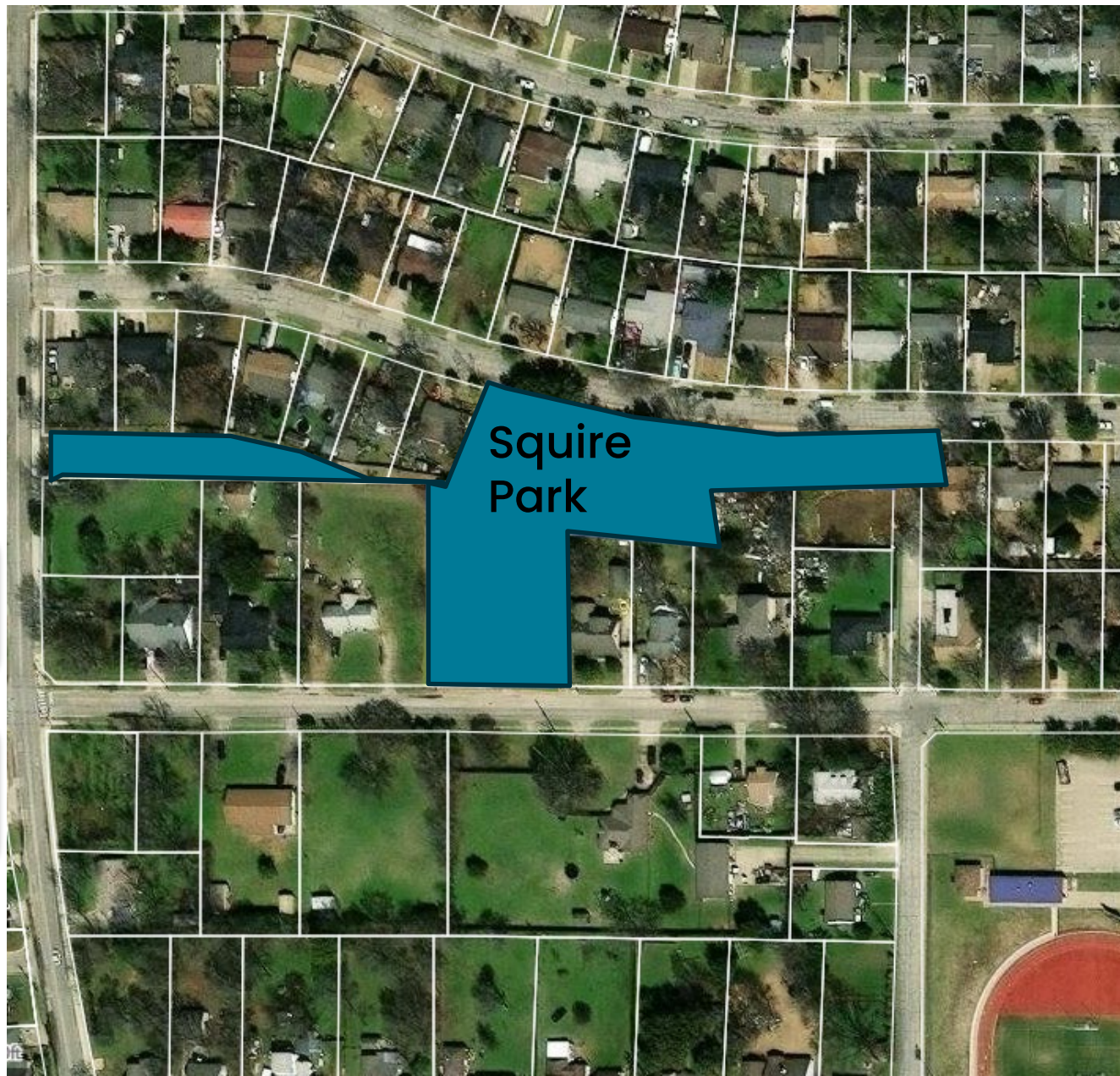
1.43 acres Neighborhood Park



2025 Public Outreach Efforts



Menu and cost of park amenities



Park User's Wish List

Here's what Squire Park users envision:

- A dedicated walking path
- Sports courts for activities such as basketball, soccer, and pickleball
- A splashpad
- An upgraded playground
- Pavilion



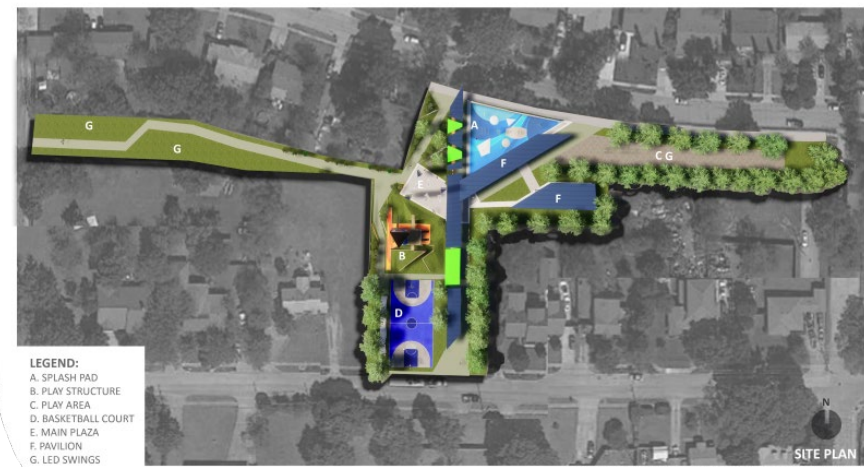
Amenities and Estimated Costs

Amenity	Estimated Cost
Trail	\$200,000
Splash Pad	\$200,000
Playground Updates	\$500,000 (w/playground surfacing and shade for playground)
Pavilion	\$100,000
Lighting	\$100,000
Basketball Court	\$100,000
Turf-soccer	\$250,000
Parking (12 spots)	\$100,000
Design/Engineering	\$150,000
Demo/Utilities/Grading	\$175,000
Contingency	\$100,000 (10% of \$1,000,000)

Menu of Amenities

Concrete Walking Path

Estimate Cost: \$200,000



Splash Pad

Estimated Cost: \$200,000



Pavilion

Estimated Cost: \$100,000



Playground Updates

Estimated Cost: \$500,000



Transform Squire Park

Menu of Amenities

Lighting

Estimate Cost: \$100,000



Basketball Court

Estimated Cost: \$100,000



Turf-soccer

Estimated Cost: \$250,000



Parking (12 spots)

Estimated Cost: \$100,000



Transform Squire Park

1st proposed
concept plan



RENDERING DISCLAIMER: RENDERINGS ARE A CONCEPTUAL REPRESENTATION OF A FINISHED AND COMPLETED SPACE. MATERIALS AND FINISHES ARE SUBJECT TO VARY VISUALLY OR CHANGE AS THE DESIGN PROCESS PROGRESSES.



SQUIRE PARK
DESIGN CONCEPT
4.4.2022



Transform Squire Park

2nd proposed concept plan



LEGEND:

- A. SPLASH PAD
- B. BASKETBALL COURT
- C. PLAYGROUND
- D. PAVILION
- E. PARKING AREA (12)

RENDERING DISCLAIMER: RENDERINGS ARE A CONCEPTUAL REPRESENTATION OF A FINISHED AND COMPLETED SPACE. MATERIALS AND FINISHES ARE SUBJECT TO VARY VISUALLY OR CHANGE AS THE DESIGN PROCESS PROGRESSES.



**FARMERS
BRANCH**

SQUIRE PARK
DESIGN CONCEPT
6.8.2023

QUORUM
ARCHITECTURE · INTERIOR DESIGN

Discussion & Direction



FARMERS BRANCH
TEXAS