

|                                 |  |  |  |               |               |                |                 |
|---------------------------------|--|--|--|---------------|---------------|----------------|-----------------|
| <h1 style="margin:0;">TIPS</h1> |  | <b>CONTRACT PRICING WORKSHEET</b><br>For MOTOR VEHICLES Only |  | Contract No.: | <b>230404</b> | Date Prepared: | <b>3/8/2025</b> |
|---------------------------------|--|--|--|---------------|---------------|----------------|-----------------|

**This Worksheet is prepared by Contractor and given to End User. If a PO is issued, both documents MUST be emailed to Reliable Chevrolet @ [dadams@reliablechevrolet.com](mailto:dadams@reliablechevrolet.com) or faxed to 972-952-8172 AND COPIED TO [tipspo@tips-usa.com](mailto:tipspo@tips-usa.com). Therefore please type or print legibly.**

|                 |                        |              |  |
|-----------------|------------------------|--------------|--|
| Buying Agency:  | CITY OF FARMERS BRANCH | Contractor:  | RELIABLE CHEVROLET   |
| Contact Person: |                        | Prepared By: | DOUG ADAMS   |
| Phone:          | FAN #                  | Phone:       | 972-952-1561   |
| Fax:            |                        | Fax:         | 972-952-8172   |
| Email:          |                        | Email:       | <a href="mailto:dadams@reliablechevrolet.com">dadams@reliablechevrolet.com</a> |

|         |   |
|---------|---|
| Spec #: | Description: <b>2025 CHEVROLET TAHOE LS 2WHDR</b> |
|---------|---|

**A. Product Item Unit Price:**

|  |       |
|--|-------|
|  | 56250 |
|--|-------|

**B. Published Options - Itemize below - Attach additional sheet(s) if necessary - Include Option Code in description if applicable.**  
(Note: Published Options are options which were submitted and priced in Contractor's bid.)

| Description               | Cost | Description                            | Cost |
|---------------------------|------|--|------|
| LS TRIM LEVEL             | INCL | ALL THE STD FEATURES ON THE 2025 MODEL | INCL |
| 2WHDR                     | INCL | <b>NOTE: VEHICLES NOT KEYED ALIKE</b>  | INCL |
| <b>3RD ROW SEATING</b>    | INCL | DRZ - REAR CAMERA MIRROR               | INCL |
| CARPET FLOOR              | INCL | ONSTAR                                 | INCL |
| CLOTH FRONT BUCKETS       | INCL |  | INCL |
| D07 RETAIL CENTER CONSOLE | INCL |  | INCL |
|                           | INCL | VK3 FRONT LICENSE PLATE BRACKET        | INCL |
|                           | INCL |  |      |
|                           | INCL |  |      |
|                           | INCL |  |      |
|                           | INCL |  |      |
|                           | INCL | Subtotal From Additional Sheet(s):     |      |
|                           | INCL | Subtotal B:                            | 0    |

**C. Unpublished Options - Itemize below / attach additional sheet(s) if necessary.**  
(Note: Unpublished options are items which were not submitted and priced in Contractor's bid.)

| Description | Cost | Description                        | Cost |
|-------------|------|------------------------------------|------|
|             |      |                                    |      |
|             |      |                                    |      |
|             |      | Subtotal From Additional Sheet(s): |      |
|             |      | Subtotal C:                        | 0    |

|   |  |    |
|---|--|----|
| <b>Check:</b> Total cost of Unpublished Options (C) cannot exceed 25% of the total of the Base Unit Price plus Published Options (A+B). | <b>For this transaction the percentage is:</b> | 0% |
|---|--|----|

**D. Total Cost Before Any Applicable Trade-In / Other Allowances / Discounts (A+B+C)**

|                   |   |   |                        |       |   |             |       |
|-------------------|---|---|------------------------|-------|---|-------------|-------|
| Quantity Ordered: | 1 | X | Subtotal of A + B + C: | 56250 | = | Subtotal D: | 56250 |
|-------------------|---|---|------------------------|-------|---|-------------|-------|

**E. Order Processing Charge (Amount Per Current Policy)**

|  |             |  |
|--|-------------|--|
|  | Subtotal E: |  |
|--|-------------|--|

**F. Trade-Ins / Special Discounts / Other Allowances / Freight / Installation / Miscellaneous Charges**

| Description                   | Cost | Description                               | Cost |
|-------------------------------|------|---|------|
|                               |      | <b>NOTE: DELIVERY IS OPTIONAL ON TIPS</b> |      |
|                               |      |   |      |
| <b>EXTERIOR COLOR - WHITE</b> |      |   |      |
|                               |      | Subtotal F:                               | 0    |

|                |     |   |       |
|----------------|-----|---|-------|
| Delivery Date: | TBD | <b>G. Total Purchase Price (D+E+F):</b> | 56250 |
|----------------|-----|---|-------|



# TEXAS LOCAL GOVERNMENT PURCHASING COOPERATIVE BUYBOARD

|                      |                               |               |                     |
|----------------------|-------------------------------|---------------|---------------------|
| Vendor               | <b>RUSH TRUCK CENTER</b>      | Date Prepared | <b>2/26/2025</b>    |
| Contact for Vendor:  | <b>Mike Foley</b>             | Phone         | <b>214-215-3536</b> |
| End User:            | <b>City of Farmers Branch</b> |               |                     |
| End User Contact:    | <b>Kevin Reinart</b>          | Phone/Fax     | <b>972 919 8777</b> |
| Product Description: | <b>2025 Ford F-150</b>        |               |                     |

|   |                     |                       |                     |
|---|---------------------|-----------------------|---------------------|
| A: Base Price in Bid/Proposal Number: <b>724-23</b>                   |                     | Series: <b>F-150</b>  | <b>\$31,846.00</b>  |
| B: Published Options (Itemize Below)                                  |                     |                       |                     |
|   | DESCRIPTION         | AMOUNT                |                     |
| Ford  | W1K crew cab        | \$6,995.00            |                     |
| Ford  | Ford Listed Options | \$1,905.75            |                     |
|   |                     |                       |                     |
|   |                     |                       |                     |
|   |                     |                       |                     |
|   |                     |                       |                     |
|   |                     |                       |                     |
| Subtotal Column 1: \$   |                     | 8,900.75              |                     |
|   |                     | Subtotal Column 2: \$ | 3,457.25            |
| Published Options added to Base Price (Subtotal of "Col 1" & "Col 2") |                     |                       | <b>\$ 12,358.00</b> |

|                          |  |  |                    |  |
|--------------------------|--|--|--------------------|--|
| C: Subtotal of A + B     |  |  |                    |  |
| D: Non Published Options |  |  |                    |  |
|                          |  |  |                    |  |
|                          |  |  |                    |  |
|                          |  |  |                    |  |
| Subtotal Column 1:       |  |  | Subtotal Column 2: |  |

|  |  |
|--|--|
| Unpublished Options added to Base price (Subtotal "Col 1 + Col 2") |  |
|--|--|

|   |  |
|---|--|
| E: Contract Price Adjustment (If any, explain here) |  |
|   |  |

|                         |  |
|-------------------------|--|
| F: Total of C + D +/- E |  |
|-------------------------|--|

|                                      |  |
|--------------------------------------|--|
| G: Quantity ordered Units: _____ x F |  |
|--------------------------------------|--|

|                                |                  |
|--------------------------------|------------------|
| H: BUYBOARD Administrative Fee | <b>\$ 400.00</b> |
|--------------------------------|------------------|

|  |  |  |  |  |
|--|--|--|--|--|
| I: Non-Equipment Charges & Credits (I.e.: Ext. Warranty, Trade-In, Delivery, etc.) |  |  |  |  |
|  |  |  |  |  |
|  |  |  |  |  |
|  |  |  |  |  |

|   |                    |
|---|--------------------|
| J: TOTAL PURCHASE PRICE INCLUDING (G+H+I) | <b>\$17,604.00</b> |
|---|--------------------|

Prepared for: Mr. Kevin Reinart, Fleet Mngr, City of Farmers Branch  
13333 Davis Ct.  
Farmers Branch, TX 75234

2025 F-150 4x2 SuperCrew Cab 5.5' box 145" WB XL (W1K)  
Price Level: 550

### **Client Proposal**

Prepared by:  
MIKE FOLEY  
Office: 214-215-3536  
Email: [foley@rushenterprises.com](mailto:foley@rushenterprises.com)  
Quote ID: Immnb  
Date: 02/26/2025



Rush Medium Duty Truck Center, Dallas | 4000 Irving Blvd., Dallas, Texas, 752475816  
Office: 214-631-2050

**Prepared for: Mr. Kevin Reinart**

Fleet Mngr, City of Farmers Branch

Prepared by: MIKE FOLEY

02/26/2025

Rush Medium Duty Truck Center, Dallas | 4000 Irving Blvd. Dallas Texas | 752475816



**2025 F-150 4x2 SuperCrew Cab 5.5' box 145" WB XL (W1K)**

Price Level: 550 | Quote ID: Immnb

**Mr. Kevin Reinart, Fleet Mngr, City of Farmers**

**Branch**

13333 Davis Ct.

Farmers Branch, TX 75234

Re: Quote ID Immnb 02/26/2025

Dear Mr. Reinart,

Thank you very much for your interest in acquiring a vehicle from our dealership. We concur that your interest is well deserved. We hope that an outstanding product lineup and our dedication to customer service will enhance your ownership experience should you decide to buy a vehicle from us.

Attached, please find additional information that I hope will assist you in making a more informed decision. Please feel free to contact me at any time as I would truly appreciate the opportunity to be of service to you.

Sincerely,

**MIKE FOLEY**

Municipal Sales Dir.

214-215-3536

foleym@rushenterprises.com

**Prepared for: Mr. Kevin Reinart**

Fleet Mngr, City of Farmers Branch

Prepared by: MIKE FOLEY

02/26/2025

Rush Medium Duty Truck Center, Dallas | 4000 Irving Blvd. Dallas Texas | 752475816



2025 F-150 4x2 SuperCrew Cab 5.5' box 145" WB XL (W1K)

Price Level: 550 | Quote ID: Immnb

## Table of Contents

| Description           | Page |
|-----------------------|------|
| Cover Page            | 1    |
| Cover Letter          | 2    |
| Table of Contents     | 3    |
| Warranty              | 4    |
| As Configured Vehicle | 5    |

**Prepared for: Mr. Kevin Reinart**

Fleet Mngr, City of Farmers Branch

Prepared by: MIKE FOLEY

02/26/2025

Rush Medium Duty Truck Center, Dallas | 4000 Irving Blvd. Dallas Texas | 752475816



**2025 F-150 4x2 SuperCrew Cab 5.5' box 145" WB XL (W1K)**

Price Level: 550 | Quote ID: Immnb

## Warranty

### Standard Warranty

#### *Basic Warranty*

Basic warranty

36 months/36,000 miles

#### *Powertrain Warranty*

Powertrain warranty

60 months/60,000 miles

#### *Corrosion Perforation*

Corrosion perforation warranty

60 months/unlimited

#### *Roadside Assistance Warranty*

Roadside warranty

60 months/60,000 miles

Prices and content availability as shown are subject to change and should be treated as estimates only. Actual base vehicle, package and option pricing may vary from this estimate because of special local pricing, availability or pricing adjustments not reflected in the dealer's computer system. See salesperson for the most current information.

**Prepared for: Mr. Kevin Reinart**

Fleet Mngr, City of Farmers Branch

Prepared by: MIKE FOLEY

02/26/2025

Rush Medium Duty Truck Center, Dallas | 4000 Irving Blvd. Dallas Texas | 752475816

**2025 F-150 4x2 SuperCrew Cab 5.5' box 145" WB XL (W1K)**

Price Level: 550 | Quote ID: lmmnb

**As Configured Vehicle**

| Code                         | Description   |
|------------------------------|---|
| <b>Base Vehicle</b>          |   |
| W1K                          | Base Vehicle Price (W1K)  |
| <b>Packages</b>              |   |
| 101A                         | <b>Equipment Group 101A Standard</b><br><i>Includes:</i> <ul style="list-style-type: none"><li>- Engine: 2.7L V6 EcoBoost<br/><i>Includes auto start-stop technology.</i></li><li>- Transmission: Electronic 10-Speed Automatic<br/><i>Includes SelectShift with progressive range select and selectable drive modes: normal, ECO, sport, tow/haul, slippery and trail.</i></li><li>- GVWR: 6,426 lbs Payload Package</li><li>- Tires: 245/70R17 BSW A/S</li><li>- Wheels: 17" Silver Steel</li><li>- Cloth 40/20/40 Front Seat<br/><i>Includes 2-way manual driver/passenger and armrest.</i></li><li>- Radio: AM/FM Stereo w/6 Speakers<br/><i>Includes auxiliary audio input jack.</i></li><li>- SYNC 4 w/Enhanced Voice Recognition<br/><i>Includes 12" LCD capacitive touchscreen with swipe capability, wireless phone connection, cloud connected, AppLink with App catalog, 911 Assist, Apple CarPlay and Android Auto compatibility, digital owners manual and conversational voice command recognition.</i></li></ul> |
| <b>Powertrain</b>            |   |
| 99P                          | <b>Engine: 2.7L V6 EcoBoost</b><br><i>Includes auto start-stop technology.</i>  |
| 44G                          | <b>Transmission: Electronic 10-Speed Automatic</b><br><i>Includes SelectShift with progressive range select and selectable drive modes: normal, ECO, sport, tow/haul, slippery and trail.</i>   |
| XL9                          | <b>Electronic Locking w/3.55 Axle Ratio</b>   |
| STDGV                        | <b>GVWR: 6,426 lbs Payload Package</b>  |
| <b>Wheels &amp; Tires</b>    |   |
| STDTR                        | <b>Tires: 245/70R17 BSW A/S</b>   |
| 64C                          | <b>Wheels: 17" Silver Steel</b>   |
| <b>Seats &amp; Seat Trim</b> |   |
| C                            | <b>Cloth 40/20/40 Front Seat</b><br><i>Includes 2-way manual driver/passenger and armrest.</i>  |
| <b>Other Options</b>         |   |

Prices and content availability as shown are subject to change and should be treated as estimates only. Actual base vehicle, package and option pricing may vary from this estimate because of special local pricing, availability or pricing adjustments not reflected in the dealer's computer system. See salesperson for the most current information.



**Prepared for: Mr. Kevin Reinart**

Fleet Mngr, City of Farmers Branch

Prepared by: MIKE FOLEY

02/26/2025

Rush Medium Duty Truck Center, Dallas | 4000 Irving Blvd. Dallas Texas | 752475816



2025 F-150 4x2 SuperCrew Cab 5.5' box 145" WB XL (W1K)

Price Level: 550 | Quote ID: Immnb

**As Configured Vehicle (cont'd)**

| Code                  | Description   |
|-----------------------|---|
| 145WB                 | 145" Wheelbase  |
| STDRD                 | Radio: AM/FM Stereo w/6 Speakers<br><i>Includes auxiliary audio input jack.</i><br><br><i>Includes:</i><br>- SYNC 4 w/Enhanced Voice Recognition<br><i>Includes 12" LCD capacitive touchscreen with swipe capability, wireless phone connection, cloud connected, AppLink with App catalog, 911 Assist, Apple CarPlay and Android Auto compatibility, digital owners manual and conversational voice command recognition.</i>   |
| 18B                   | Black Platform Running Boards   |
| 67T                   | Integrated Trailer Brake Controller   |
| 153                   | Front License Plate Bracket<br><i>Standard in states where required by law, optional to all others.</i>   |
| 96W                   | Tough Bed Spray-In Bedliner<br>Ford accessory.  |
| PAINT                 | Monotone Paint Application  |
| <b>Fleet Options</b>  |   |
| WARANT                | Fleet Customer Powertrain Limited Warranty<br><br>Requires valid FIN code.<br><br><i>Ford is increasing the 5-year 60,000-mile limited powertrain warranty to 5-years, 100,000 miles. Only Fleet purchasers with a valid Fleet Identification Number (FIN code) will receive the extended warranty. When the sale is entered into the sales reporting system with a sales type fleet along with a valid FIN code, the warranty extension will automatically be added to the vehicle. The extension will stay with the vehicle even if it is subsequently sold to a non-fleet customer before the expiration. This extension applies to both gas and diesel powertrains. Dealers can check for the warranty extension on eligible fleet vehicles in OASIS. Please refer to the Warranty and Policy Manual section 3.13.00 Gas Engine Commercial Warranty. This change will also be reflected in the printed Warranty Guide distributed with the purchase of every new vehicle.</i> |
| <b>Emissions</b>      |   |
| 425                   | 50 State Emissions System   |
| <b>Exterior Color</b> |   |
| HX_02                 | Antimatter Blue Metallic  |
| <b>Interior Color</b> |   |

Prices and content availability as shown are subject to change and should be treated as estimates only. Actual base vehicle, package and option pricing may vary from this estimate because of special local pricing, availability or pricing adjustments not reflected in the dealer's computer system. See salesperson for the most current information.

**Prepared for: Mr. Kevin Reinart**

Fleet Mngr, City of Farmers Branch

Prepared by: MIKE FOLEY

02/26/2025

Rush Medium Duty Truck Center, Dallas | 4000 Irving Blvd. Dallas Texas | 752475816



2025 F-150 4x2 SuperCrew Cab 5.5' box 145" WB XL (W1K)

Price Level: 550 | Quote ID: Immnb

**As Configured Vehicle (cont'd)**

| Code  | Description   |
|-------|---|
| CS_01 | Black w/Medium Dark Slate w/Cloth 40/20/40 Front Seat |

Prices and content availability as shown are subject to change and should be treated as estimates only. Actual base vehicle, package and option pricing may vary from this estimate because of special local pricing, availability or pricing adjustments not reflected in the dealer's computer system. See salesperson for the most current information.

# TEXAS LOCAL GOVERNMENT PURCHASING COOPERATIVE BUYBOARD

|  |                                 |
|--|---------------------------------|
| Vendor: <b>RUSH TRUCK CENTER</b>                         | Date Prepared: <b>2/26/2025</b> |
| Contact for Vendor: <b>Mike Foley</b>                    | Phone: <b>214-215-3536</b>      |
| End User: <b>City of Farmers Branch</b>                  |                                 |
| End User Contact: <b>Kevin Reinart</b>                   | Phone/Fax: <b>972 919 8777</b>  |
| Product Description: <b>2025 Ford F-350 SRW crew cab</b> |                                 |

|   |                     |            |                      |                                |                     |             |              |  |
|---|---------------------|------------|----------------------|--------------------------------|---------------------|-------------|--------------|--|
| A: Base Price in Bid/Proposal Number: <b>724-23</b>                   |                     |            | Series: <b>F-350</b> |                                |                     | \$48,815.00 |              |  |
| B: Published Options (Itemize Below)                                  |                     |            |                      |                                |                     |             |              |  |
|   | DESCRIPTION         | AMOUNT     |                      | OPT #                          | DESCRIPTION         | AMOUNT      |              |  |
| Ford  | W5G crew cab Dump   | \$6,995.00 |                      | RTC0051                        | OEM Safety Alalysis | \$ 1,263.00 |              |  |
| Ford  | Ford Listed Options | \$2,702.75 |                      | RTC-0059                       | Lot Insurance       | \$1,096.00  |              |  |
|   |                     |            |                      | RTC-1060                       | Floor Plan Interest | \$ 1,125.25 |              |  |
|   |                     |            |                      |                                |                     |             |              |  |
|   |                     |            |                      |                                |                     |             |              |  |
|   |                     |            |                      |                                |                     |             |              |  |
|   |                     |            |                      |                                |                     |             |              |  |
| Subtotal Column 1: \$ 9,697.75  |                     |            |                      | Subtotal Column 2: \$ 3,457.25 |                     |             |              |  |
| Published Options added to Base Price (Subtotal of "Col 1" & "Col 2") |                     |            |                      |                                |                     |             | \$ 13,155.00 |  |

|  |  |                    |  |             |
|--|--|--------------------|--|-------------|
| C: Subtotal of A + B   |  |                    |  |             |
| D: Non Published Options   |  |                    |  |             |
| Knapheide 7000 series service body                                 |  | 4 corner strobes   |  |             |
| Whelen amber& blue lightbar  |  |                    |  |             |
| All listed options   |  |                    |  |             |
| Subtotal Column 1:   |  | Subtotal Column 2: |  |             |
| Unpublished Options added to Base price (Subtotal "Col 1 + Col 2") |  |                    |  | \$23,270.00 |

|   |  |
|---|--|
| E: Contract Price Adjustment (If any, explain here) |  |
|   |  |
|   |  |

|                         |  |
|-------------------------|--|
| F: Total of C + D +/- E |  |
|-------------------------|--|

|                            |     |  |
|----------------------------|-----|--|
| G: Quantity ordered Units: | x F |  |
|----------------------------|-----|--|

|                                |           |
|--------------------------------|-----------|
| H: BUYBOARD Administrative Fee | \$ 400.00 |
|--------------------------------|-----------|

|  |  |  |  |  |  |
|--|--|--|--|--|--|
| I: Non-Equipment Charges & Credits (I.e.: Ext. Warranty, Trade-In, Delivery, etc.) |  |  |  |  |  |
|  |  |  |  |  |  |
|  |  |  |  |  |  |
|  |  |  |  |  |  |

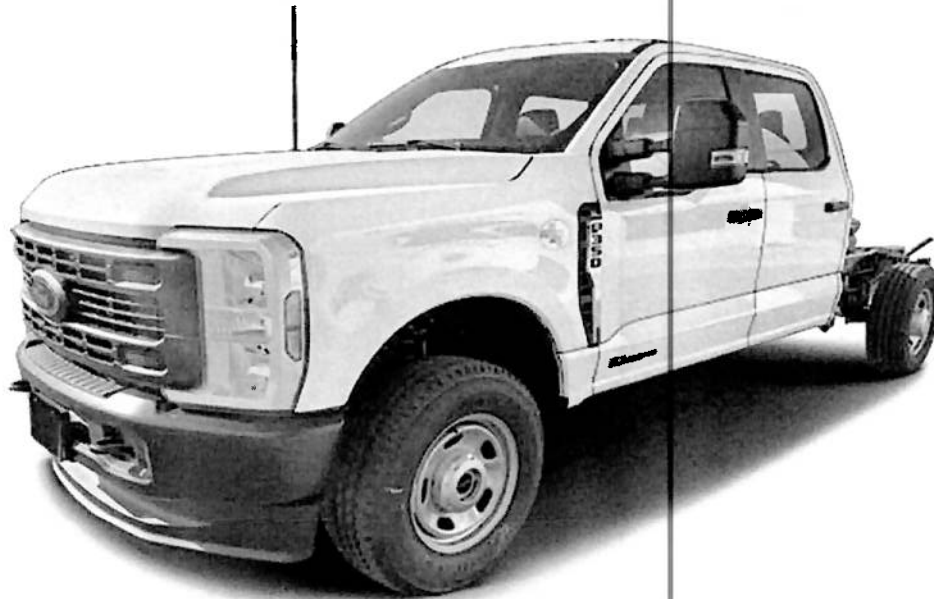
|   |             |
|---|-------------|
| J: TOTAL PURCHASE PRICE INCLUDING (G+H+I) | \$85,640.00 |
|---|-------------|

**Prepared for: Mr. Kevin Reinart, Fleet Mngr, City of Farmers Branch**  
13333 Davis Ct.  
Farmers Branch, TX 75234

---

**2025 F-350 Chassis 4x2 SD Crew Cab 179" WB SRW XL (W3E)**  
Price Level: 525

---



**Client Proposal**

Prepared by:  
**MIKE FOLEY**  
Office: 214-215-3536  
Email: [foleym@rushenterprises.com](mailto:foleym@rushenterprises.com)  
Date: 02/26/2025



Rush Medium Duty Truck Center, Dallas | 4000 Irving Blvd., Dallas, Texas, 752475816  
Office: 214-631-2050

**Prepared for: Mr. Kevin Reinart**

Fleet Mngr, City of Farmers Branch

Prepared by: MIKE FOLEY

02/26/2025

Rush Medium Duty Truck Center, Dallas | 4000 Irving Blvd. Dallas Texas | 752475816

**2025 F-350 Chassis 4x2 SD Crew Cab 179" WB SRW XL (W3E)**

Price Level: 525



**Mr. Kevin Reinart, Fleet Mngr, City of Farmers**

**Branch**

13333 Davis Ct.

Farmers Branch, TX 75234

**Re: Vehicle Proposal 02/26/2025**

Dear Mr. Reinart,

Thank you very much for your interest in acquiring a vehicle from our dealership. We concur that your interest is well deserved. We hope that an outstanding product lineup and our dedication to customer service will enhance your ownership experience should you decide to buy a vehicle from us.

Attached, please find additional information that I hope will assist you in making a more informed decision. Please feel free to contact me at any time as I would truly appreciate the opportunity to be of service to you.

Sincerely,

**MIKE FOLEY**

Municipal Sales Dir.

214-215-3536

foleym@rushenterprises.com

**Prepared for: Mr. Kevin Reinart**

Fleet Mngr, City of Farmers Branch

Prepared by: MIKE FOLEY

02/26/2025

Rush Medium Duty Truck Center, Dallas | 4000 Irving Blvd. Dallas Texas | 752475816



**2025 F-350 Chassis 4x2 SD Crew Cab 179" WB SRW XL (W3E)**

Price Level: 525

## Table of Contents

| Description           | Page |
|-----------------------|------|
| Cover Page            | 1    |
| Cover Letter          | 2    |
| Table of Contents     | 3    |
| Warranty              | 4    |
| As Configured Vehicle | 5    |

**Prepared for: Mr. Kevin Reinart**

Fleet Mngr, City of Farmers Branch

Prepared by: MIKE FOLEY

02/26/2025

Rush Medium Duty Truck Center, Dallas | 4000 Irving Blvd. Dallas Texas | 752475816



**2025 F-350 Chassis 4x2 SD Crew Cab 179" WB SRW XL (W3E)**

Price Level: 525

## Warranty

### Standard Warranty

#### *Basic Warranty*

|                |                        |
|----------------|------------------------|
| Basic warranty | 36 months/36,000 miles |
|----------------|------------------------|

#### *Powertrain Warranty*

|                     |                        |
|---------------------|------------------------|
| Powertrain warranty | 60 months/60,000 miles |
|---------------------|------------------------|

#### *Corrosion Perforation*

|                                |                     |
|--------------------------------|---------------------|
| Corrosion perforation warranty | 60 months/unlimited |
|--------------------------------|---------------------|

#### *Roadside Assistance Warranty*

|                   |                        |
|-------------------|------------------------|
| Roadside warranty | 60 months/60,000 miles |
|-------------------|------------------------|

Prices and content availability as shown are subject to change and should be treated as estimates only. Actual base vehicle, package and option pricing may vary from this estimate because of special local pricing, availability or pricing adjustments not reflected in the dealer's computer system. See salesperson for the most current information.

**Prepared for: Mr. Kevin Reinart**

Fleet Mngr, City of Farmers Branch

Prepared by: MIKE FOLEY

02/26/2025

Rush Medium Duty Truck Center, Dallas | 4000 Irving Blvd. Dallas Texas | 752475816

**2025 F-350 Chassis 4x2 SD Crew Cab 179" WB SRW XL (W3E)**

Price Level: 525

**As Configured Vehicle**

| Code                      | Description   |
|---------------------------|---|
| <b>Base Vehicle</b>       |   |
| W3E                       | Base Vehicle Price (W3E)  |
| <b>Packages</b>           |   |
| 630A                      | Order Code 630A<br><i>Includes:</i><br>- Engine: 7.3L 2V DEVCT NA PFI V8 Gas<br>- 190 Amp Alternator<br>- Transmission: TorqShift 10-Speed Automatic<br>10R140 with neutral idle. Includes SelectShift and selectable drive modes: normal, tow/haul, eco, slippery roads and trail.<br>- Electronic-Locking w/4.30 Axle Ratio<br>- GVWR: 11,000 lb Payload Package<br>- Tires: LT275/65Rx18E BSW A/S<br>Spare may not be the same as the road tire.<br>- Wheels: 18" Argent Painted Steel<br>Includes painted hub covers/center ornaments.<br>- HD Vinyl 40/20/40 Split Bench Seat<br>Includes center armrest, cupholder, storage, 2-way adjustable driver/passenger headrests and driver's side manual lumbar.<br>- Radio: AM/FM Stereo w/MP3 Player<br>Includes 6 speakers.<br>- SYNC 4 Communication & Entertainment System<br>Includes enhanced voice recognition, 911 Assist, 8" LCD center stack screen, AppLink and 1 smart-charging USB port. |
| <b>Powertrain</b>         |   |
| 99N                       | Engine: 7.3L 2V DEVCT NA PFI V8 Gas<br><i>Includes:</i><br>- 190 Amp Alternator   |
| 44G                       | Transmission: TorqShift 10-Speed Automatic<br>10R140 with neutral idle. Includes SelectShift and selectable drive modes: normal, tow/haul, eco, slippery roads and trail.   |
| X4M                       | Electronic-Locking w/4.30 Axle Ratio  |
| STDGV                     | GVWR: 11,000 lb Payload Package<br>Complete restrictions/requirements not available.  |
| <b>Wheels &amp; Tires</b> |   |
| TCH                       | Tires: LT275/65Rx18E BSW A/S<br>Spare may not be the same as the road tire.   |
| 64F                       | Wheels: 18" Argent Painted Steel<br>Includes painted hub covers/center ornaments.   |

Prices and content availability as shown are subject to change and should be treated as estimates only. Actual base vehicle, package and option pricing may vary from this estimate because of special local pricing, availability or pricing adjustments not reflected in the dealer's computer system. See salesperson for the most current information.



**Prepared for: Mr. Kevin Reinart**

Fleet Mng'r, City of Farmers Branch

Prepared by: MIKE FOLEY

02/26/2025

Rush Medium Duty Truck Center, Dallas | 4000 Irving Blvd. Dallas Texas | 752475816

**2025 F-350 Chassis 4x2 SD Crew Cab 179" WB SRW XL (W3E)**

Price Level: 525

**As Configured Vehicle (cont'd)**

| Code                         | Description  |
|------------------------------|--|
| 512                          | Spare Tire & Wheel<br>Required in Rhode Island.<br><i>Excludes carrier.</i><br><br><i>Includes:</i><br>- 3-Ton Mechanical Jack   |
| <b>Seats &amp; Seat Trim</b> |  |
| A                            | HD Vinyl 40/20/40 Split Bench Seat<br><i>Includes center armrest, cupholder, storage, 2-way adjustable driver/passenger headrests and driver's side manual lumbar.</i>   |
| <b>Other Options</b>         |  |
| PAINT                        | Monotone Paint Application   |
| 179WB                        | 179" Wheelbase   |
| STDRD                        | Radio: AM/FM Stereo w/MP3 Player<br><i>Includes 6 speakers.</i><br><br><i>Includes:</i><br>- SYNC 4 Communication & Entertainment System<br><i>Includes enhanced voice recognition, 911 Assist, 8" LCD center stack screen, AppLink and 1 smart-charging USB port.</i> |
| 61J                          | 3-Ton Mechanical Jack  |
| 96V                          | XL Chrome Package<br><i>Includes:</i><br>- Bright Chrome Hub Covers & Center Ornaments<br>- Chrome Front Bumper<br>- Bright Grille<br>- Privacy Glass w/Power Sliding Rear Glass<br>- Rear Window Defroster<br>- Remote Start<br>- Halogen Fog Lamps                   |
| 18B                          | Platform Running Boards  |
| 153                          | Front License Plate Bracket<br>Standard in states requiring 2 license plates and optional to all others.   |
| 872                          | Rear View Camera & Prep Kit<br><i>Pre-installed content includes cab wiring and frame wiring to the rear most cross member. Unifitters kit includes camera with mounting bracket, 20' jumper wire and camera mounting/aiming instructions.</i>                         |
| 52B                          | Trailer Brake Controller   |

Prices and content availability as shown are subject to change and should be treated as estimates only. Actual base vehicle, package and option pricing may vary from this estimate because of special local pricing, availability or pricing adjustments not reflected in the dealer's computer system. See salesperson for the most current information.

**Prepared for: Mr. Kevin Reinart**

Fleet Mngr, City of Farmers Branch

Prepared by: MIKE FOLEY

02/26/2025

Rush Medium Duty Truck Center, Dallas | 4000 Irving Blvd. Dallas Texas | 752475816

**2025 F-350 Chassis 4x2 SD Crew Cab 179" WB SRW XL (W3E)**

Price Level: 525

**As Configured Vehicle (cont'd)**

| Code                  | Description  |
|-----------------------|--|
| <b>Fleet Options</b>  |  |
| WARANT                | Fleet Customer Powertrain Limited Warranty<br>Requires valid FIN code.<br><i>Ford is increasing the 5-year 60,000-mile limited powertrain warranty to 5-years, 100,000 miles. Only Fleet purchasers with a valid Fleet Identification Number (FIN code) will receive the extended warranty. When the sale is entered into the sales reporting system with a sales type fleet along with a valid FIN code, the warranty extension will automatically be added to the vehicle. The extension will stay with the vehicle even if it is subsequently sold to a non-fleet customer before the expiration. This extension applies to both gas and diesel powertrains. Dealers can check for the warranty extension on eligible fleet vehicles in OASIS. Please refer to the Warranty and Policy Manual section 3.13.00 Gas Engine Commercial Warranty. This change will also be reflected in the printed Warranty Guided distributed with the purchase of every new vehicle.</i> |
| <b>Emissions</b>      |  |
| 425                   | 50-State Emissions System  |
| <b>Exterior Color</b> |  |
| Z1_01                 | Oxford White   |
| <b>Interior Color</b> |  |
| AS_03                 | Medium Dark Slate w/HD Vinyl 40/20/40 Split Bench Seat   |
| <b>Upfit Options</b>  |  |
| 1548555               | amber & blue 52' Whelen lightbar + 4 corner strobes  |
| 51543645              | Knapheide 7000 series service body with all illustrated and listed options   |

Prices and content availability as shown are subject to change and should be treated as estimates only. Actual base vehicle, package and option pricing may vary from this estimate because of special local pricing, availability or pricing adjustments not reflected in the dealer's computer system. See salesperson for the most current information.

- b. Single Rear Wheel
- c. Whelen Lightbar, amber/blue w/ Core- Controller
- d. Perimeter emergency lighting
- e. Backup camera
- f. Directional bar mounted on the pipe rack (See Photo)
- g. Knapheid 7000 Series Utility Body (Standard Height)
  - i. LED Lighting
  - ii. Mechanics drawers in Right Front compartment
  - iii. Cargo Tiedowns
  - iv. Vice mount
  - v. Pipe Rack (See Photo)
  - vi. Storage Box on Right side (See Photo)
  - vii. Shovel box on left side (See Photo)
  - viii. 12v outlets in center compartment on both sides
- h. Photos



i.



j.

Let me know if you have any questions. I am going to try to move quickly on these to get them to council so the sooner I can get quotes the better.

Thank you,  
-Kevin



**Kevin Reinartz - CPFP**

Fleet Operations Manager

Keenan Service Center

13333 Davis Road

Farmers Branch, Texas 75234

Phone: (972)919-8777

Email: [Kevin.Reinartz@farmersbranchtx.gov](mailto:Kevin.Reinartz@farmersbranchtx.gov)

"Our mission at the City of Farmers Branch is to build a vibrant, dynamic community that consistently seeks to improve the quality of life for our residents."



# TEXAS LOCAL GOVERNMENT PURCHASING COOPERATIVE BUYBOARD

|                      |                                     |               |                     |
|----------------------|-------------------------------------|---------------|---------------------|
| Vendor               | <b>RUSH TRUCK CENTER</b>            | Date Prepared | <b>12/5/2024</b>    |
| Contact for Vendor:  | <b>Mike Foley</b>                   | Phone         | <b>214 215 3536</b> |
| End User:            | <b>City of Farmers Branch</b>       |               |                     |
| End User Contact:    | <b>Kevin Reinartz</b>               | Phone/Fax     | <b>972 919 8777</b> |
| Product Description: | <b>2025 Ford F-350/DRW/CREW CAB</b> |               |                     |

|   |                     |              |                      |                       |              |
|---|---------------------|--------------|----------------------|-----------------------|--------------|
| A: Base Price in Bid/Proposal Number: <b>724-23</b>                               |                     |              | Series: <b>F-350</b> |                       | \$42,186.00  |
| B: Published Options( <i>Itemize Below</i> )                                      |                     |              |                      |                       |              |
|   | DESCRIPTION         | AMOUNT       | OPT #                | DESCRIPTION           | AMOUNT       |
| Ford  | W3G DRW CREW CAB    | \$ 9,995.00  | RTC-0051             | OEM Safety Inspection | \$ 1,236.00  |
| Ford  | Listed Ford Options | \$ 5,198.50  | RTC-1059             | Lot Insurance         | \$ 1,125.25  |
|   |                     |              | RTC-1060             | Floor Plan Interest   | \$ 1,025.25  |
|   |                     |              | RTC-0071             | Knapheide 700 series  | \$ 24,899.00 |
|   |                     |              |                      | 46" sides             |              |
| Subtotal Column 1:  |                     | \$ 15,193.50 |                      |                       | \$ 28,285.50 |
| Published Options added to Base Price( <i>Subtotal of "Col 1" &amp; "Col 2"</i> ) |                     |              |                      |                       | \$ 43,479.00 |

|                              |                  |  |  |  |  |
|------------------------------|------------------|--|--|--|--|
| C: Subtotal of A + B         |                  |  |  |  |  |
| D: Non Published Options     |                  |  |  |  |  |
| Whelen amber & blue lightbar |                  |  |  |  |  |
|                              | 4 corner strobes |  |  |  |  |
| Subtotal Column 1:           |                  |  |  |  |  |
| Subtotal Column 2:           |                  |  |  |  |  |

|   |            |
|---|------------|
| Unpublished Options added to Base price ( <i>Subtotal "Col 1 + Col 2"</i> ) | \$3,995.00 |
|---|------------|

|  |              |
|--|--------------|
| E: Contract Price Adjustment ( <i>If any, explain here</i> ) |              |
|  |              |
| Loss of FOMOCO Municipal Discounts                           |              |
| Additional Material Costs                                    |              |
| F: Total of C + D +/- E                                      | \$ 89,660.00 |

|  |               |
|--|---------------|
| G: Quantity ordered Units: <b>4.00</b> x F | \$ 358,640.00 |
|--|---------------|

|                                |           |
|--------------------------------|-----------|
| H: BUYBOARD Administrative Fee | \$ 400.00 |
|--------------------------------|-----------|

|   |  |  |  |  |  |
|---|--|--|--|--|--|
| I: Non-Equipment Charges & Credits ( <i>I.e.: Ext. Warranty, Trade-In, Delivery, etc.</i> ) |  |  |  |  |  |
|   |  |  |  |  |  |
|   |  |  |  |  |  |
|   |  |  |  |  |  |

|   |              |
|---|--------------|
| J: TOTAL PURCHASE PRICE INCLUDING (G+H+I) | \$359,040.00 |
|---|--------------|

**Prepared for: Mr. Kevin Reinart, Fleet Mngr, City of Farmers Branch**  
13333 Davis Ct.  
Farmers Branch, TX 75234

---

**2025 F-350 Chassis 4x2 SD Crew Cab 179" WB DRW XL (W3G)**  
Price Level: 520

---



### **Client Proposal**

Prepared by:  
**MIKE FOLEY**  
Office: 214-215-3536  
Email: [foleym@rushenterprises.com](mailto:foleym@rushenterprises.com)  
Quote ID: 12052024-7  
Date: 12/05/2024



Rush Medium Duty Truck Center, Dallas | 4000 Irving Blvd., Dallas, Texas, 752475816  
Office: 214-631-2050

**Prepared for: Mr. Kevin Reinart**

Fleet Mngr, City of Farmers Branch

Prepared by: MIKE FOLEY

12/05/2024

Rush Medium Duty Truck Center, Dallas | 4000 Irving Blvd. Dallas Texas | 752475816



**2025 F-350 Chassis 4x2 SD Crew Cab 179" WB DRW XL (W3G)**

Price Level: 520 | Quote ID: 12052024-7

---

**Mr. Kevin Reinart, Fleet Mngr, City of Farmers**

**Branch**

13333 Davis Ct.

Farmers Branch, TX 75234

Re: Quote ID 12052024-7 12/05/2024

---

Dear Mr. Reinart,

Thank you very much for your interest in acquiring a vehicle from our dealership. We concur that your interest is well deserved. We hope that an outstanding product lineup and our dedication to customer service will enhance your ownership experience should you decide to buy a vehicle from us.

Attached, please find additional information that I hope will assist you in making a more informed decision. Please feel free to contact me at any time as I would truly appreciate the opportunity to be of service to you.

Sincerely,

**MIKE FOLEY**

Municipal Sales Dir.

214-215-3536

foleym@rushenterprises.com

**Prepared for: Mr. Kevin Reinart**

Fleet Mngr, City of Farmers Branch

Prepared by: MIKE FOLEY

12/05/2024

Rush Medium Duty Truck Center, Dallas | 4000 Irving Blvd. Dallas Texas | 752475816



**2025 F-350 Chassis 4x2 SD Crew Cab 179" WB DRW XL (W3G)**

Price Level: 520 | Quote ID: 12052024-7

## Table of Contents

| Description           | Page |
|-----------------------|------|
| Cover Page            | 1    |
| Cover Letter          | 2    |
| Table of Contents     | 3    |
| Warranty              | 4    |
| As Configured Vehicle | 5    |



**Prepared for: Mr. Kevin Reinart**

Fleet Mngr, City of Farmers Branch

Prepared by: MIKE FOLEY

12/05/2024

Rush Medium Duty Truck Center, Dallas | 4000 Irving Blvd. Dallas Texas | 752475816



**2025 F-350 Chassis 4x2 SD Crew Cab 179" WB DRW XL (W3G)**

Price Level: 520 | Quote ID: 12052024-7

## Warranty

### Standard Warranty

#### *Basic Warranty*

Basic warranty ..... 36 months/36,000 miles

#### *Powertrain Warranty*

Powertrain warranty ..... 60 months/60,000 miles

#### *Corrosion Perforation*

Corrosion perforation warranty ..... 60 months/unlimited

#### *Roadside Assistance Warranty*

Roadside warranty ..... 60 months/60,000 miles

Prices and content availability as shown are subject to change and should be treated as estimates only. Actual base vehicle, package and option pricing may vary from this estimate because of special local pricing, availability or pricing adjustments not reflected in the dealer's computer system. See salesperson for the most current information.

Prepared for: Mr. Kevin Reinart

Fleet Mngr, City of Farmers Branch

Prepared by: MIKE FOLEY

12/05/2024

Rush Medium Duty Truck Center, Dallas | 4000 Irving Blvd. Dallas Texas | 752475816



2025 F-350 Chassis 4x2 SD Crew Cab 179" WB DRW XL (W3G)

Price Level: 520 | Quote ID: 12052024-7

## As Configured Vehicle

| Code                      | Description   |
|---------------------------|---|
| <b>Base Vehicle</b>       |   |
| W3G                       | Base Vehicle Price (W3G)  |
| <b>Packages</b>           |   |
| 640A                      | <p>Order Code 640A</p> <p><i>Includes:</i></p> <ul style="list-style-type: none"><li>- Engine: 7.3L 2V DEVCT NA PFI V8 Gas</li><li>- Transmission: TorqShift 10-Speed Automatic 10R140 with neutral idle. Includes SelectShift and selectable drive modes: normal, tow/haul, eco, slippery roads and trail.</li><li>- GVWR: 14,000 lb Payload Package</li><li>- Wheels: 17" Argent Painted Steel</li><li>Hub covers/center ornaments not included.</li><li>- HD Vinyl 40/20/40 Split Bench Seat</li><li>Includes center armrest, cupholder, storage, 2-way adjustable driver/passenger headrests and driver's side manual lumbar.</li><li>- Radio: AM/FM Stereo w/MP3 Player</li><li>Includes 6 speakers.</li><li>- SYNC 4 Communication &amp; Entertainment System</li><li>Includes enhanced voice recognition, 911 Assist, 8" LCD center stack screen, AppLink and 1 smart-charging USB port.</li></ul> |
| <b>Powertrain</b>         |   |
| 99N                       | Engine: 7.3L 2V DEVCT NA PFI V8 Gas   |
| 44G                       | <p>Transmission: TorqShift 10-Speed Automatic</p> <p>10R140 with neutral idle. Includes SelectShift and selectable drive modes: normal, tow/haul, eco, slippery roads and trail.</p>  |
| X4L                       | Limited Slip w/4.30 Axle Ratio  |
| STDGV                     | GVWR: 14,000 lb Payload Package   |
| <b>Wheels &amp; Tires</b> |   |
| TBM                       | <p>Tires: LT245/75R17E BSW A/T</p> <p>Spare may not be the same as road tire.</p>   |
| 64K                       | <p>Wheels: 17" Argent Painted Steel</p> <p>Hub covers/center ornaments not included.</p>  |
| 512                       | <p>Spare Tire &amp; Wheel</p> <p>Required in Rhode Island.</p> <p>Excludes carrier.</p> <p><i>Includes:</i></p> <ul style="list-style-type: none"><li>- 4-Ton Hydraulic Jack</li></ul>  |

Prices and content availability as shown are subject to change and should be treated as estimates only. Actual base vehicle, package and option pricing may vary from this estimate because of special local pricing, availability or pricing adjustments not reflected in the dealer's computer system. See salesperson for the most current information.

**Prepared for: Mr. Kevin Reinart**

Fleet Mngr, City of Farmers Branch

Prepared by: MIKE FOLEY

12/05/2024

Rush Medium Duty Truck Center, Dallas | 4000 Irving Blvd. Dallas Texas | 752475816

**2025 F-350 Chassis 4x2 SD Crew Cab 179" WB DRW XL (W3G)**

Price Level: 520 | Quote ID: 12052024-7

**As Configured Vehicle (cont'd)**

| Code                         | Description  |
|------------------------------|--|
| <b>Seats &amp; Seat Trim</b> |  |
| A                            | HD Vinyl 40/20/40 Split Bench Seat<br><i>Includes center armrest, cupholder, storage, 2-way adjustable driver/passenger headrests and driver's side manual lumbar.</i>   |
| <b>Other Options</b>         |  |
| PAINT                        | Monotone Paint Application   |
| 179WB                        | 179" Wheelbase   |
| STDRD                        | Radio: AM/FM Stereo w/MP3 Player<br><i>Includes 6 speakers.</i><br><br><i>Includes:</i><br>- SYNC 4 Communication & Entertainment System<br><i>Includes enhanced voice recognition, 911 Assist, 8" LCD center stack screen, AppLink and 1 smart-charging USB port.</i>   |
| 61J                          | 4-Ton Hydraulic Jack   |
| 96V                          | XL Chrome Package<br><i>Includes:</i><br>- Chrome Front Bumper<br>- Bright Grille<br>- Privacy Glass w/Power Sliding Rear Glass<br>- Rear Window Defroster<br>- Remote Start<br>- Halogen Fog Lamps  |
| 67X                          | Extra Heavy-Service Suspension Package<br><i>Includes pre-selected extra heavy-service front springs (see Order Guide Supplemental Reference for springs/FGAWR of specific vehicle configurations). Recommended only on vehicles which will permanently utilize aftermarket equipment such as heavy-duty winches, brush guards or other apparatus which loads the front axle to the specified Gross Axle Weight Rating (GAWR). Note 1: May result in a deterioration of ride quality. Note 2: Vehicle ride height will increase with the addition of this package.</i> |
| 86M                          | Dual 68 AH/65 AGM Battery  |
| 67A                          | 350 Amp Dual Alternators<br><i>Includes 190 Amp + 160 Amp.</i>   |
| 18B                          | Platform Running Boards  |
| 153                          | Front License Plate Bracket<br><br>Standard in states requiring 2 license plates and optional to all others.   |
| 872                          | Rear View Camera & Prep Kit  |

Prices and content availability as shown are subject to change and should be treated as estimates only. Actual base vehicle, package and option pricing may vary from this estimate because of special local pricing, availability or pricing adjustments not reflected in the dealer's computer system. See salesperson for the most current information.

**Prepared for: Mr. Kevin Reinart**

Fleet Mngr, City of Farmers Branch

Prepared by: MIKE FOLEY

12/05/2024

Rush Medium Duty Truck Center, Dallas | 4000 Irving Blvd. Dallas Texas | 752475816

**2025 F-350 Chassis 4x2 SD Crew Cab 179" WB DRW XL (W3G)**

Price Level: 520 | Quote ID: 12052024-7

**As Configured Vehicle (cont'd)**

| Code                  | Description  |
|-----------------------|--|
|                       | <i>Pre-installed content includes cab wiring and frame wiring to the rear most cross member. Upfitters kit includes camera with mounting bracket, 20' jumper wire and camera mounting/aiming instructions.</i>   |
| 52B                   | Trailer Brake Controller   |
| 76C                   | Exterior Backup Alarm (Pre-Installed)  |
| <b>Fleet Options</b>  |  |
| WARANT                | Fleet Customer Powertrain Limited Warranty<br>Requires valid FIN code.<br><i>Ford is increasing the 5-year 60,000-mile limited powertrain warranty to 5-years, 100,000 miles. Only Fleet purchasers with a valid Fleet Identification Number (FIN code) will receive the extended warranty. When the sale is entered into the sales reporting system with a sales type fleet along with a valid FIN code, the warranty extension will automatically be added to the vehicle. The extension will stay with the vehicle even if it is subsequently sold to a non-fleet customer before the expiration. This extension applies to both gas and diesel powertrains. Dealers can check for the warranty extension on eligible fleet vehicles in OASIS. Please refer to the Warranty and Policy Manual section 3.13.00 Gas Engine Commercial Warranty. This change will also be reflected in the printed Warranty Guided distributed with the purchase of every new vehicle.</i> |
| <b>Emissions</b>      |  |
| 425                   | 50-State Emissions System  |
| <b>Exterior Color</b> |  |
| Z1_01                 | Oxford White   |
| <b>Interior Color</b> |  |
| AS_03                 | Medium Dark Slate w/HD Vinyl 40/20/40 Split Bench Seat   |
| <b>Upfit Options</b>  |  |
| 1548555               | Knapheide 700 series service box with 46" sides  |
| 51543645              | Whelen 54" amber and blue lightbar with controls & 4 corner strobes  |

Prices and content availability as shown are subject to change and should be treated as estimates only. Actual base vehicle, package and option pricing may vary from this estimate because of special local pricing, availability or pricing adjustments not reflected in the dealer's computer system. See salesperson for the most current information.

# TEXAS LOCAL GOVERNMENT PURCHASING COOPERATIVE BUYBOARD

|   |                                |
|---|--------------------------------|
| Vendor <b>RUSH TRUCK CENTER</b>                         | Date Prepared <b>2/26/2025</b> |
| Contact for Vendor: <b>Mike Foley</b>                   | Phone <b>214-215-3536</b>      |
| End User: <b>City of Farmers Branch</b>                 |                                |
| End User Contact: <b>Kevin Reinart</b>                  | Phone/Fax <b>972 919 8777</b>  |
| Product Description: <b>2025 Peterbilt 548/Roll off</b> |                                |

|   |                          |              |                         |                     |               |
|---|--------------------------|--------------|-------------------------|---------------------|---------------|
| A: Base Price in Bid/Proposal Number: 723-23                                      |                          |              | Series: 548 \$51,129.00 |                     |               |
| B: Published Options( <i>Itemize Below</i> )                                      |                          |              |                         |                     |               |
|   | DESCRIPTION              | AMOUNT       | OPT #                   | DESCRIPTION         | AMOUNT        |
| Pete  | Pete 548                 | \$9,995.00   | RTC0051                 | OEM Safety Alalysis | \$ 1,263.00   |
| Pete  | Peterbilt listed options | \$66,379.09  | RTC-0059                | Lot Insurance       | \$1,096.00    |
|   |                          |              | RTC-1060                | Floor Plan Interest | \$ 1,125.25   |
|   |                          |              | RTC-0017                | Galfab 60K roll off | \$ 65,573.56  |
|   |                          |              |                         |                     |               |
|   |                          |              |                         |                     |               |
|   |                          |              |                         |                     |               |
|   |                          |              |                         |                     |               |
| Subtotal Column 1:  |                          | \$ 76,374.09 | Subtotal Column 2:      |                     | \$ 69,057.81  |
| Published Options added to Base Price( <i>Subtotal of "Col 1" &amp; "Col 2"</i> ) |                          |              |                         |                     | \$ 145,431.90 |

|                                |  |             |                    |  |  |
|--------------------------------|--|-------------|--------------------|--|--|
| C: Subtotal of A + B           |  |             |                    |  |  |
| D: Non Published Options       |  |             |                    |  |  |
| Cleral Scale system            |  | \$7,215.00  |                    |  |  |
| Pioneer Tarp system            |  | \$ 8,617.66 |                    |  |  |
|                                |  |             |                    |  |  |
| Subtotal Column 1: \$15,832.66 |  |             | Subtotal Column 2: |  |  |

|   |             |
|---|-------------|
| Unpublished Options added to Base price ( <i>Subtotal "Col 1 + Col 2"</i> ) | \$15,832.66 |
|---|-------------|

|  |  |
|--|--|
| E: Contract Price Adjustment ( <i>If any, explain here</i> ) |  |
|  |  |
|  |  |

|                         |  |
|-------------------------|--|
| F: Total of C + D +/- E |  |
|-------------------------|--|

|                            |     |  |
|----------------------------|-----|--|
| G: Quantity ordered Units: | x F |  |
|----------------------------|-----|--|

|                                |           |
|--------------------------------|-----------|
| H: BUYBOARD Administrative Fee | \$ 400.00 |
|--------------------------------|-----------|

|   |  |  |  |  |             |
|---|--|--|--|--|-------------|
| I: Non-Equipment Charges & Credits ( <i>I.e.: Ext. Warranty, Trade-In, Delivery, etc.</i> ) |  |  |  |  |             |
|   |  |  |  |  |             |
|   |  |  |  |  |             |
|   |  |  |  |  |             |
|   |  |  |  |  | \$ 1,650.00 |

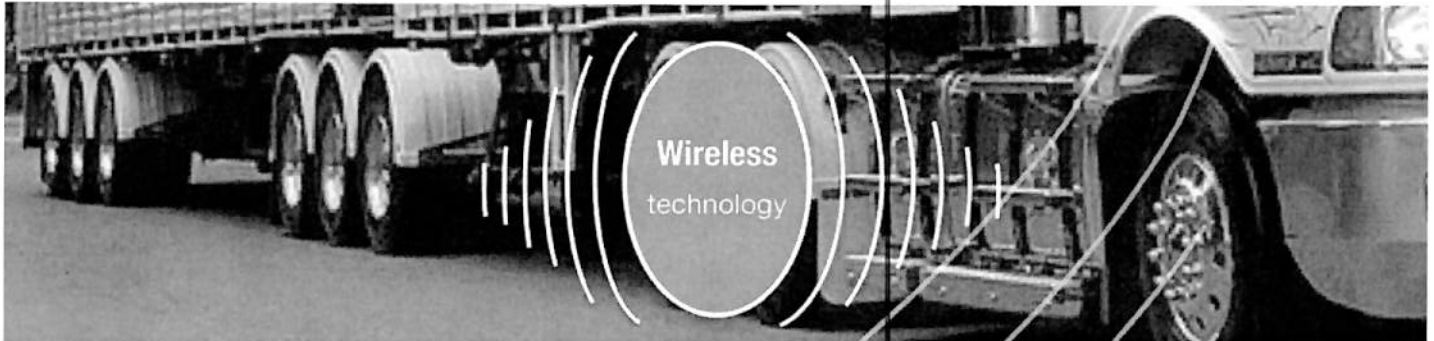
|   |              |
|---|--------------|
| J: TOTAL PURCHASE PRICE INCLUDING (G+H+I) | \$214,443.56 |
|---|--------------|

MONITOR YOUR WEIGHT WITHOUT EXCEEDING LEGAL LIMITS

# KILOAD

# K3 WIFI

COMPATIBLE WITH ANY CLERAL WIRELESS SENSORS



## ON-BOARD WEIGHING SYSTEM WITH WIRELESS TECHNOLOGY

Imagine getting the cargo weights and transmitting that information via a satellite computer for live management of your operations.

The WiFi K3 from CLERAL is a fixed in-cab weighing system. It communicates by wireless link with the sensors installed on the semi-trailers to obtain weight information. At a glance, the OLED display makes it easy to obtain the cargo axle distribution and total weights with 99%+ accuracy.

For the fleet manager, the cargo data can be transmitted to a printer or a satellite onboard computer for real-time management.

The automatic sensor recognition allows an unlimited number of semi-trailers to be coupled without calibration; Which is an undeniable advantage for fleet management. The WiFi K3 is compatible with any CLERAL wireless sensors.

The line of sight communication distance of the K3 is 1000m or 3200 feet.

The small size of the monitor allows easy integration on or into the dashboard without compromising the driving field of view.

With its 12 channels, the K3 makes it possible to instrument all special vehicles paired with several semi-trailers.

For mechanical suspensions, CLERAL's innovative technology, is based on maintenance-free axle sensors. Durable and precise, these sensors make it possible to equip the majority of vehicles without modifications.

### Specifications:

Power voltage display : 12 to 24 Vdc  
Weight : 200 g  
Monitor size WxHxD: 100 X 65 X 40 mm  
Display: OLED  
Communication range: 1000 m  
Display support : Fixed  
Air sensor: 0 to 150 psi  
Burst pressure: 250 psi  
Mechanical sensor: Sealed Stainless Steel  
Sensor cable jacket : Polyurethane



### ADVANTAGES:

- Unbeatable economic prices
- Margin of error to +/- 1%
- Quick and easy installation
- Installs on all suspensions
- Installs on any truck
- No vehicle modifications
- User friendly
- Displays Axle and Total weights
- Unit of measure( kg, lb. et Tons)
- 12 channels
- Weight displayed in gross or net

### Options:

- Sim
- Printing
- Data (RS232)communication (GPS)

(866) 901-7372



cleral-usa.com





## OR SERIES OUTSIDE RAIL HOIST

The Outside Rail roll-off hoist is the most commonly used hoist in the industry today. GALFAB offers this hoist with an 8" mainframe and 2" subframe or the very popular 10" sub frameless hoist.

Available in 60k and 75k pound models to fit any application.



Visit our website: [GALFAB.com](http://GALFAB.com) | Follow us on social media



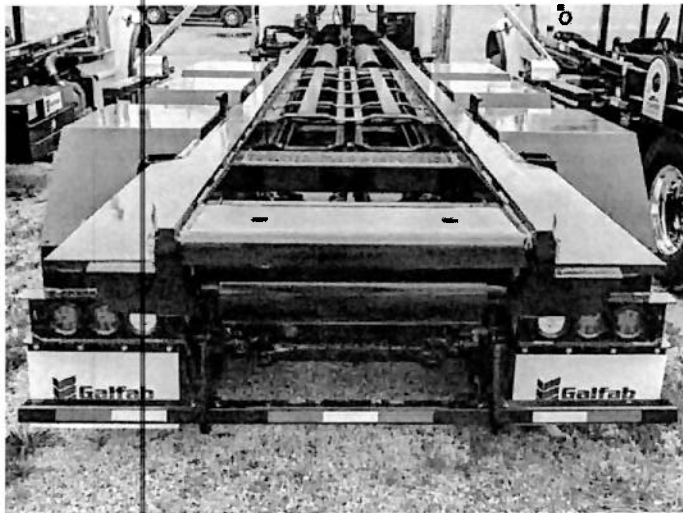
| Call Today: 574-946-7767

# THE GALFAB ADVANTAGE



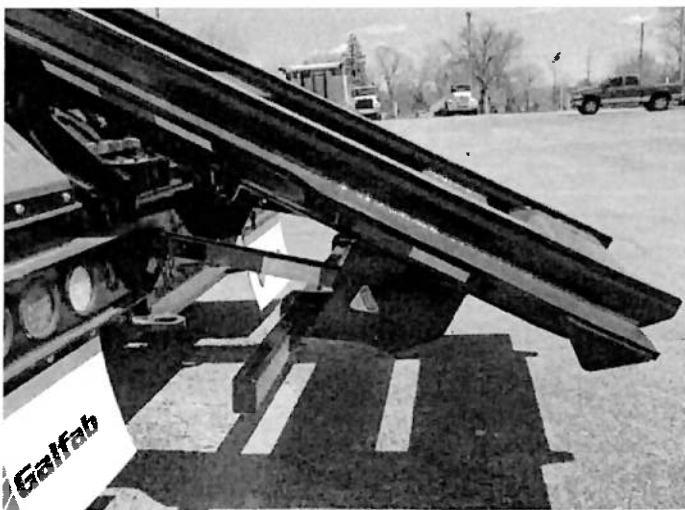
## Outboard Supported Side Rollers

Greasable Roller shaft is removable with two bolts for ease of replacement and maintenance.



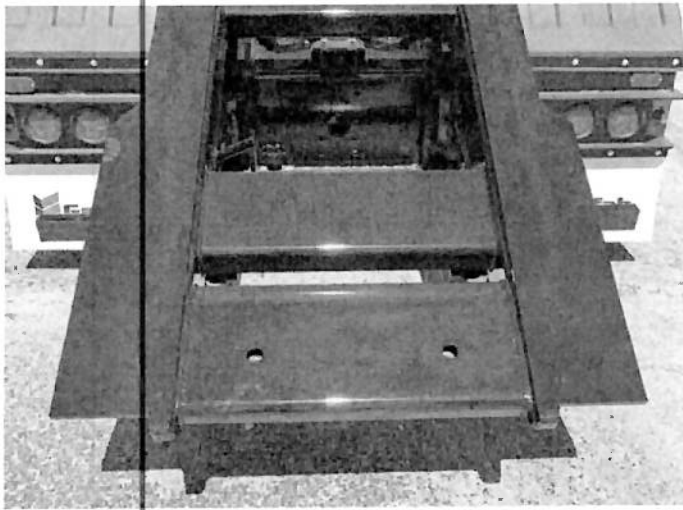
## Container Long Sill Support Rails

Rails aid in loading misaligned containers and give added support to the long sills increasing the life of your container.



## Autofold DOT Bumpers

Bumper folds forward reducing the chance of bending and hang-ups in the landfill.



## Rear Ground Roller Cover

Standard on all Outside Rail Hoists making it easier to load and unload containers.



Visit our website: [GALFAB.com](http://GALFAB.com) | Follow us on social media



| Call Today: 574-946-7767



## STANDARD FEATURES

- 8" x 4 x 1/2" Main Frame Tube
- 3" x 2" x 1/4" Subframe
- 2 1/2" Diameter Rear Hinge
- All Working Points Greaseable
- Pintle Ready Apron
- Auto Fold Forward DOT Bumper
- 1" Spring Loaded Container Locks
- 2 1/2" Diameter Lift Cylinder Shafts
- Interchangeable 10" Vertical and Horizontal Sheaves
- 3/8 inch x 3-inch Winch Cylinder Rod Covers
- 6 Inboard and Outboard Supported Outside Rollers
- Container Long Sill Supports on Rear of Hoist Mainframe
- 48 Gallon Oil Reservoir with Sight and Temperature Gauge
- 25 Micron Filtration
- Inside and Outside Controls
- LED Lighting System
- Choice of Forward or Reverse Mount Single-Stage or Telescopic Lift Cylinders
- 7/8" Cable with Heavy Duty Swivel Eye Hook
- GALFAB Auto-fold DOT Bumper
- 48-Degree Dump Angle on all Models
- 2 Minute Loading Cycle Time\* Keeping your Drivers on the Road
- Hoist Up Alarm
- Backup Alarm

## OPTIONAL FEATURES

- Behind Cab and Oversize Oil Tanks
- Tool Boxes
- Auxiliary Stops
- Poly or Steel Fenders
- Aluminum Fenders
- Tarping Systems
- "The Hooker" Hold On System
- Ratchet Tie Down Straps
- Pintle Hook
- Front Mount Pump
- PTO
- Drop Shaft
- On Board Scale Systems
- Work Lights
- Rear View Camera Systems
- Integrated hydraulics can be used, if hydraulic tarping is used



**"The Hooker"  
Container  
Securement System**



**Auxiliary fold down  
stops**



**Hydraulic Reservoirs**



**Tool Boxes**



**Poly, Steel &  
Aluminum Fenders**

Shop all replacement parts at:

**GALFAB.com**



Visit our website: [GALFAB.com](http://GALFAB.com) | Follow us on social media



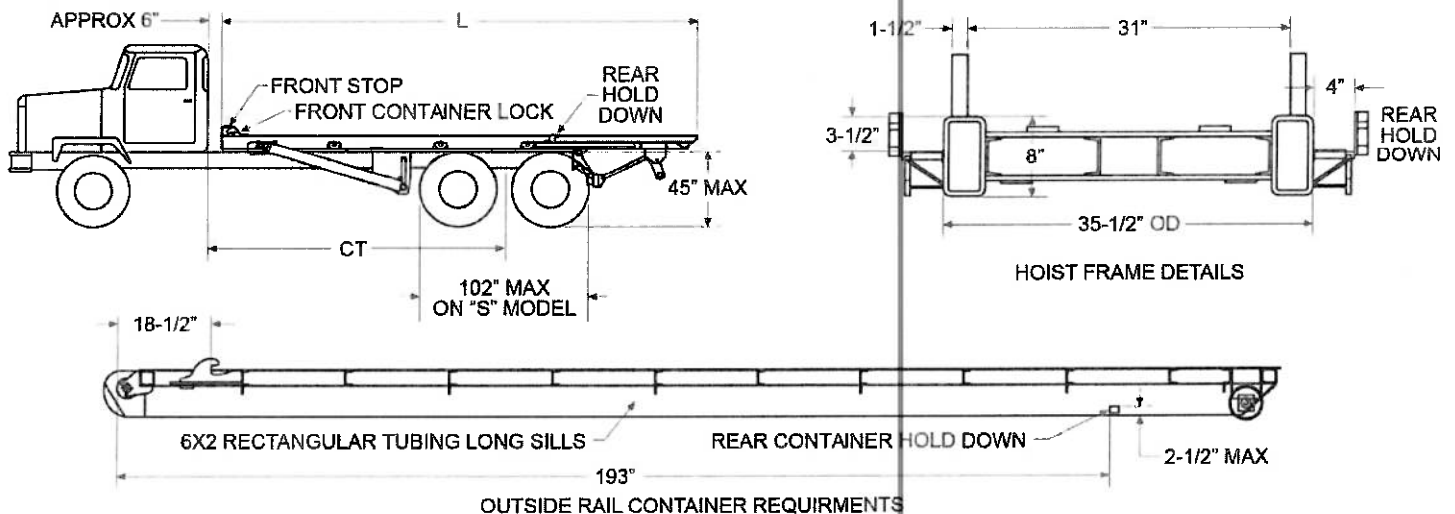
| Call Today: 574-946-7767

## OR SERIES MODELS

| Model         | Capacity | CA   | CA with tarp | Length | Dump Angle | Up (sec)* | Down (sec)* | On (sec)* | Off (sec)* | Lift Cylinder       | Winch Cylinder     | Container Length ft | Apx Weight lbs |
|---------------|----------|------|--------------|--------|------------|-----------|-------------|-----------|------------|---------------------|--------------------|---------------------|----------------|
| OR60174S072   | 60,000   | 174" | 186"         | 23'3"  | 48°        | 27        | 15          | 41        | 28         | 6" x 4" x 72" DA    | 7" x 4" x 79.5" DA | 18'-22'             | 7550           |
| OR60174S072R  | 60,000   | 174" | 186"         | 23'3"  | 48°        | 27        | 15          | 41        | 28         | 6" x 4" x 72" DA    | 7" x 4" x 79.5" DA | 18'-22'             | 7550           |
| OR60174T121   | 60,000   | 174" | 186"         | 23'3"  | 48°        | 35        | 29          | 41        | 28         | 6"-5"-4" x 121" DAT | 7" x 4" x 79.5" DA | 18'-22'             | 7225           |
| OR75174S072F7 | 75,000   | 174" | 186"         | 23'3"  | 48°        | 37        | 23          | 41        | 28         | 7" x 4" x 72" DA    | 7" x 4" x 79.5" DA | 18'-22'             | 7550           |
| OR75174S072R7 | 75,000   | 174" | 186"         | 23'3"  | 48°        | 37        | 23          | 41        | 28         | 7" x 4" x 72" DA    | 7" x 4" x 79.5" DA | 18'-22'             | 7550           |
| OR75174T121   | 75,000   | 174" | 186"         | 23'3"  | 48°        | 35        | 29          | 41        | 28         | 6"-5"-4" x 121" DAT | 7" x 4" x 79.5" DA | 18'-22'             | 7350           |
| OR60194S072   | 60,000   | 194" | 206"         | 24'11" | 48°        | 27        | 15          | 46        | 31         | 6" x 4" x 72" DA    | 7" x 4" x 89.5" DA | 20'-24'             | 7850           |
| OR60194S072R  | 60,000   | 194" | 206"         | 24'11" | 48°        | 27        | 15          | 46        | 31         | 6" x 4" x 72" DA    | 7" x 4" x 89.5" DA | 20'-24'             | 7850           |
| OR60194T121   | 60,000   | 194" | 206"         | 24'11" | 48°        | 35        | 29          | 46        | 31         | 6"-5"-4" x 121" DAT | 7" x 4" x 89.5" DA | 20'-24'             | 8075           |
| OR75194S072F7 | 75,000   | 194" | 206"         | 24'11" | 48°        | 37        | 23          | 46        | 31         | 7" x 4" x 72" DA    | 7" x 4" x 89.5" DA | 20'-24'             | 7850           |
| OR75194S072R7 | 75,000   | 194" | 206"         | 24'11" | 48°        | 37        | 23          | 46        | 31         | 7" x 4" x 72" DA    | 7" x 4" x 89.5" DA | 20'-24'             | 7850           |
| OR75194T121   | 75,000   | 194" | 206"         | 24'11" | 48°        | 35        | 29          | 46        | 31         | 6"-5"-4" x 121" DAT | 7" x 4" x 89.5" DA | 20'-24'             | 8075           |

\* Cycle Times are Factory developed and controlled by PTO output, oil viscosity, human and mechanical efficiency, and may vary accordingly.

CAUTION: This Equipment Should be Operated by Properly Trained Personnel. Improper Use, Misuse, or Lack of Maintenance Could Cause Injury to Persons or Property. Photos used in this brochure are illustrative only. We reserve the right to make changes at any time without notice. Information contained within this literature is believed to be the most accurate available at the time of printing.



Visit our website: [GALFAB.com](http://GALFAB.com) | Follow us on social media



| Call Today: 574-946-7767

CHASSIS NUMBER: 773975 Plant: M MODEL: 0005481 CUSTOMER NAME: STOCK FIRM DATE: 01/07/25

REPORT DATE: 02/19/25

CHASSIS NUMBER: 773975

MODEL: 0005481

PLANT CODE: M

DEALER NO: D551

OPS STAT: 02/19/25

PRESENT ID-1: GALFAB ROLLOFF

CUSTOMER PO:

DEALER NAME AND ADDRESS:

CUSTOMER NAME AND ADDRESS:

RUSH PBLT MD TRK CTR-DL

CGZ9

4200 IRVING BLVD

STOCK

DALLAS TX 75247

SHIPPING DESTINATION: SEE

INSTRUCTIONS PDI

STARTING CHASSIS NO: 773974

ENDING CHASSIS NO: 773975

REQUESTED: 12/27/24

PRICE EFFECTIVE DATE: 01/01/24

TENTATIVE DATE: 01/06/25

FIRM DATE: 01/07/25

WHEELBASE: 253.00

CAB TO AXLE: 185.50

CAB TO END OF FRAME: 309.50

AXLE TO BACK OF CAB: 67.50

| OPTION  | DESCRIPTION                             | PUB PRICE WGT  |
|---------|---|----------------|
|         | BASE MODEL                              |                |
| 0005481 | MODEL 548 MEDIUM DUTY                   | P 123296 10860 |
| 0200700 | NOT APPLICABLE                          | P 0 0          |
|         | SECONDARY MANUFACTURER                  |                |
|         | FRAME AND EQUIPMENT                     |                |
| 0515040 | 10-5/8" STEEL RAILS 385"-444"           | P 632 359      |
|         | 5/16" RAIL THICKNESS                    |                |
| 0601500 | FULL STEEL INNER LINER                  | P 1837 690     |
|         | USE W/10-1/2, 10-3/4, 10-5/8" RAILS     |                |
| 0611300 | HD 5-PIECE CROSSMEMBER BOC IPO STANDARD | P 0 0          |
|         | CLASS 5, 6, 7                           |                |
| 0611330 | ZINC COATED ANTI CORROSION TREATED FRME | P 364 2        |
|         | RAILS - REQUIRES FRAME RAIL CODE        |                |
| 0611790 | ALUMINUM FRAME RAIL CROSSMEMBERS        | P 0 0          |
|         | EXCLUDES SUSPENSION                     |                |
| 0612085 | 253" WHEELBASE                          | P 0 0          |
| 0622100 | FRAME RAKE EXCEEDS RECOMMENDED          | U 0 0          |
|         | CONTACT APPLICATIONS IF UNACCEPTABLE    |                |
| 0644090 | EOF SQUARE WITHOUT CROSSMEMBER          | P 0 0          |
|         | USE WITH BODY BUILDER INSTALLED XMBR    |                |
| 0651090 | OMIT REAR MUDFLAPS & HANGERS            | P 77- 24-      |
|         | FRONT AXLE AND EQUIPMENT                |                |
| 1011890 | PACCAR FX-20 STEER AXLE 20,000 LBS.     | P 2303 137     |
|         | 4" DROP                                 |                |
| 1114030 | TAPER LEAF SPRINGS, SHOCKS 20,000 LBS.  | P 440 119      |
| 1243050 | POWER STEERING SHEPPARD HD94 DUAL GEAR  | P 1023 79      |
| 1250250 | POWER STEERING RESERVOIR, FRAME MOUNTED | P 163 2        |
|         | W/COOLER                                |                |
| 1354850 | PHP10 IRON PRESET HUBS - AIR DISC       | P 1085 26      |
| 1354870 | SEVERE SERVICE DISC BRAKE ROTOR         | P 130 99       |
|         | FOR REFUSE APPLICATIONS                 |                |
| 1380290 | AIR DISC FRONT BRAKES                   | P 83- 31       |
| 1380490 | PACCAR FX WIDE TRACK IPO STD            | P 0 15         |
|         | FRONT AXLE(S)                           |                |
| 1390630 | 80 MM FRONT SPRING SPACER BLOCKS        | P 0 0          |
|         | REAR AXLE AND EQUIPMENT                 |                |
| 1526120 | MERITOR RT46-160 46,000 LBS.            | P 14496 2434   |
| 1616290 | PHP10 ALUMINUM PRESET HUBS              | P 76 0         |
| 1680280 | BENDIX SMART ATC TRACTION CONTROL       | P 139 2        |
| 1680440 | REFUSE SERVICE BRAKES, STEER AND DRIVE  | P 102 4        |
|         | AXLES                                   |                |
| 1680450 | REAR BRAKE CAMSHAFT REINFORCEMENT       | P 11 9         |
| 1680460 | HEAVY WALL, DRIVE AXLE(S)               | P 1028 88      |
| 1680470 | LUBE PUMP, DRIVE AXLE(S)                | P 346 35       |
| 1680490 | GUSSETED CAM BRACKETS, DRIVE AXLE(S)    | P 30 2         |
| 1680500 | SBM VALVE                               | P 0 0          |

|         |   |            |
|---------|---|------------|
| 1680920 | HEAVY DUTY BRAKE DRUMS, DRIVE AXLE(S)<br>USE WITH 16.5X8.6 BRAKES               | P 23- 31   |
| 1682710 | ANTI-LOCK BRAKING SYSTEM (ABS) 6S6M   | P 206 35   |
| 1684200 | SYNTHETIC AXLE LUBRICANT ALL AXLES  | P 0 0      |
| 1687020 | BENDIX AIR CAM REAR DRUM BRKS 16.5X8.6  | P 5- 4     |
| 1688110 | HEAVY DUTY CAM BUSHINGS, DRIVE AXLE(S)  | P 86 0     |
| 1705380 | RATIO 5.38 REAR AXLE  | P 0 0      |
| 1824410 | HENDRICKSON HMX EX 460 46,000 LBS., 54"<br>HAULMAAX, 70K CREEP RATING           | P 6419 606 |
| 1921965 | HMX EX DOUBLE REBOUND STRAP KIT   | P 248 7    |
| 1922615 | HD SHOCK ABSORBERS, HENDRICKSON HMX EX<br>ENGINE AND ENGINE EQUIPMENT           | P 484 0    |
| 2074806 | PACCAR PX-9 350@2000 GOV@2200 1050@1200<br>PRODUCTIVITY (2024 EMISSIONS)        | P 2838 0   |
| 2091120 | EMUX ELECTRONICS ARCHITECTURE   | P 0 0      |
| 2091310 | ENGINE IDLE SHUTDOWN TIMER DISABLED   | P 0 0      |
| 2091315 | ENABLE EIST AMBIENT TEMP OVERRULE   | P 0 0      |
| 2091372 | EFF EIST NA EXPIRATION MILES  | P 0 0      |
| 2091640 | EFFECTIVE VSL SETTING NA  | P 0 0      |
| 2092017 | TYPICAL OPERATING SPEED 68 MPH  | P 0 0      |
| 2092032 | POWERTRAIN OPTIMIZED FOR PERFORMANCE  | P 0 0      |
| 2140460 | REMOTE PTO/THROTTLE, 12-PIN, 250K, BOC/<br>BOS, J1939, REMOTE CONTROL PROVISION | P 0 0      |
| 2140670 | EPA EMISSION WARRANTY   | P 0 0      |
| 2140700 | EPA ENGINE IDLING COMPLIANCE  | P 0 0      |
| N2132   | C399 100...STANDARD MAXIMUM SPEED LIMIT   |            |
| N2133   | C402 0.....EXPIRATION DISTANCE (N207)   |            |
| N2134   | C209 100...HARD MAXIMUM SPEED LIMIT (P1   |            |
| N2135   | C121 68....MAXIMUM ACCELERATOR PEDAL VE   |            |
| N2137   | C128 68....MAXIMUM CRUISE SPEED (P059)  |            |
| N2140   | C400 252...RESERVE SPEED FUNCTION RESET   |            |
| N2141   | C334 0.....MAXIMUM CYCLE DISTANCE (N202   |            |
| N2142   | C401 10.....MAXIMUM ACTIVE DISTANCE (N20  |            |
| N2143   | C333 0.....RESERVE SPEED LIMIT OFFSET (   |            |
| N2144   | C234 YES...ENGINE PROTECTION SHUTDOWN (   |            |
| N2145   | C231 NO....GEAR DOWN PROTECTION (P026)  |            |
| N2146   | C132 1400..MAX PTO SPEED (P046)   |            |
| N2147   | C239 NO....CRUISE CONTROL AUTO RESUME (   |            |
| N2148   | C238 NO....AUTO ENGINE BRAKE IN CRUISE  |            |
| N2150   | C395 0.....EXPIRATION DISTANCE (N209)   |            |
| N2151   | C225 NO....ENABLE IDLE SHUTDOWN PARK BR   |            |
| N2152   | C133 5.....TIMER SETTING (P030)   |            |
| N2153   | C396 YES...ENABLE IMPENDING SHUTDOWN WA   |            |
| N2154   | C397 60....TIMER FOR IMPENDING SHUTDOWN   |            |
| N2155   | C206 35....ENGINE LOAD THRESHOLD (P516)   |            |
| N2157   | C233 NO....IDLE SHUTDOWN MANUAL OVERRUL   |            |
| N2159   | C382 YES...ENABLE HOT AMBIENT AUTOMATIC   |            |
| N2161   | C188 39....LOW AMBIENT TEMPERATURE THRE   |            |
| N2162   | C189 60....INTERMEDIATE AMBIENT TEMPERA   |            |
| N2163   | C190 80....HIGH AMBIENT TEMPERATURE THR   |            |
| 2513060 | PACCAR 160 AMP ALTERNATOR, BRUSHED  | P 0 0      |
| 2521090 | IMMERSION TYPE BLOCK HEATER 110-120V<br>SEE SALES TOOL DESC FOR PLUG LOCATION   | P 105 2    |
| 2522110 | PACCAR 12V STARTER<br>N/A PACCAR MX ENGINES                                     | P 0 0      |
| 2538030 | 2 PACCAR PREMIUM 12V STARTING<br>BATTERIES, 2000 CCA                            | P 0 0      |
| 2539410 | BATTERY JUMPER TERMINAL<br>MTD UNDER HOOD LH FRAME RAIL                         | P 139 4    |
| 2539720 | LOW VOLTAGE DISCONNECT SYSTEM   | P 0 0      |
| 2539840 | MD - BATTERY DISCONNECT SWITCH<br>MOUNTED ON BATTERY BOX                        | P 530 9    |
| 2621090 | HORTON ON/OFF FAN CLUTCH  | P 0 0      |
| 2723210 | 18.7 CFM AIR COMPRESSOR<br>N/A X15  | P 0 0      |

|         |   |             |
|---------|---|-------------|
| 2812210 | VGT EXHAUST BRAKE   | P 0 0       |
| 2921110 | PACCAR FUEL/WATER SEPARATOR STANDARD<br>SERVICE INTERVAL  | P 0 0       |
| 2921220 | FUEL HEAT FOR FUEL FILTER   | P 50 0      |
| 2921320 | 12V HEAT FOR FUEL FILTER  | P 62 0      |
| 3010400 | ENGINE PROTECTION SHUTDOWN<br>W/ LABEL  | P 6 0       |
| 3114270 | HIGH EFFICIENCY COOLING SYSTEM  | P 0 0       |
| 3211140 | (1) AIR CLEANER ENGINE MOUNTED  | P 0 0       |
| 3367160 | EXHAUST SINGLE RH SOC<br>DPF/SCR RH UNDER CAB, SINGLE MODULE                                    | P 1035 40   |
| 3381770 | CURVED TIP STANDPIPE(S)   | P 42 0      |
| 3387870 | 24" HT, 5" DIA STANDPIPE(S)<br>CHROME WITH CLEAR COAT<br>TRANSMISSION AND CLUTCH                | P 268 0     |
| 4052920 | ALLISON 3000 RDS-P TRANSMISSION, GEN 6<br>RUGGED DUTY SERIES                                    | P 7667 459  |
| 4099980 | TRANSMISSION APPROVED   | U 0 0       |
| N4090   | **ALLISON ISCAAN 196976   |             |
| 4210320 | 1710 HD DRIVELINE, 2 MIDSHIP BEARINGS   | P 1002 99   |
| 4216590 | 1710 DRIVELINE INTERAXLE<br>FOR TANDEM REAR AXLES   | P 0 0       |
| 4230080 | PTO F/O CHELSEA   | P 0 0       |
| 4233900 | (1) DASH MTD SINGLE ACTING EOA PTO CTRL<br>ELECTRIC OVER AIR                                    | P 87 0      |
| 4233910 | (1) DASH MTD SINGLE ACTING EOH PTO CTRL<br>ELECTRIC OVER HYDRAULIC                              | P 107 0     |
| 4250160 | ALLISON WORLD TRANS PRIMARY SHIFT<br>SCHEDULE 1   | U 0 0       |
| 4250420 | ALLISON HS/RDS, PKG 223<br>3000, 3500, 4000, 4500, 4700 TRANS                                   | U 0 0       |
| 4251020 | TC-421 TORQUE CONVERTER<br>ALLISON TRANSMISSION   | U 0 0       |
| 4252170 | AUTO NEUTRAL ACTIVATES W/ PARKING BRAKE   | P 16 0      |
| 4252890 | ALLISON FUELSENSE NOT DESIRED<br>DYNAMIC SHIFT SENSING  | P 0 0       |
| 4252940 | ALLISON NEUTRAL AT STOP   | P 0 0       |
| 4256640 | ALLISON 6-SPEED CONFIGURATION<br>3000 SERIES TRANS, CLOSE RATIO GEARS                           | P 0 0       |
| 4256920 | DASH MOUNTED PUSH BUTTON SHIFTER  | P 592 2     |
| 4256990 | ROLLING DIRECTION CHANGE SHIFT INHIBIT<br>FEATURE, ALLISON TRANSMISSIONS                        | P 0 0       |
| 4257110 | LH MOUNTED TRANS PTO PROVISIONS<br>AIR AND TRAILER EQUIPMENT                                    | P 37 0      |
| 4510190 | BENDIX AD-HF AIR DRYER, HEATER<br>COALESCING FILTER   | P 0 0       |
| 4520420 | PULL CORDS ALL AIR TANKS  | P 5 0       |
| 4540420 | NYLON CHASSIS HOSE  | P 0 0       |
| 4543320 | STEEL PAINTED AIR TANKS   | P 0 0       |
| 4611930 | BODY CONNECTIONS 5' BOC<br>TIRES AND WHEELS   | P 109 4     |
| 5004430 | FF: CN 20PLY 315/80R22.5 HSC3<br>INCLUDES TPMS SENSOR   | P 1064 97   |
| 5108020 | PART: CN05652480000 FET: 122<br>RR: AP 16PLY 11R22.5 ENDUCOMBI RDCS<br>PART: AP2021300 FET: 232 | P 1308 204  |
| 5190008 | CODE-REAR TIRE QTY 08.  |             |
| 5220530 | FF: ALCOA 89U647 22.5X9.00 HIGH POLISH<br>ALM   | P 499 13-   |
| 5320410 | RR: ALCOA 885657 22.5X8.25 HIGH POLISH<br>ALM, SEVERE SERVICE                                   | P 1980 116- |
| 5390008 | CODE-REAR RIM QTY 08.<br>FUEL TANKS   |             |
| 5584130 | D-SHAPED ALUM 80 GAL FUEL TANK LH U/C<br>NON-SLIP STEP LH U/C                                   | P 356 4     |

|         |   |           |
|---------|---|-----------|
|         | 5602080                                 |           |
| 5650490 | FUEL COOLER                             | P 186 15  |
| 5652900 | DEF TANK MOUNTED LH U/C                 | P 46 0    |
|         | USE IN ADDITION TO DEF TANK OPTION      |           |
| 5652980 | DEF TO FUEL RATIO BETWEEN 1:1 AND 2:1   | P 0 0     |
| 5655019 | DEF TANK SMALL, HD 14GAL 2.1M MD 5.5GAL | P 0 0     |
| 5660450 | (2) LOW FLEX STEPS U/C                  | P 140 9   |
|         | BATTERY BOX AND BUMPER                  |           |
| 6010780 | ALUMINUM SPACE SAVER BATTERY BOX RH BOC | P 204 84- |
|         | BATTERY ACCESS FROM SIDE                |           |
| 6030150 | RUBBER BATTERY PAD IN BOTTOM            | P 13 4    |
|         | (1) BATTERY BOX                         |           |
| 6040550 | AFTERTREATMENT RH U/C ALUM NON-SLIP     | P 0 0     |
|         | CAB ENTRY STEP                          |           |
| 6112840 | STEEL BUMPER TAPERED CHROMED            | P 491 115 |
|         | 2 TOW POINTS                            |           |
|         | CAB AND EQUIPMENT                       |           |
| 6510180 | PETERBILT AERO 107"BBC SMC HOOD         | P 0 0     |
|         | W/MOLDED CHARCOAL CROWN & ALUM CAB      |           |
| 6540160 | THERMAL INSULATION PACKAGE IN CAB       | P 68 2    |
| 6800180 | HOOD CROWN - BRIGHT FINISH              | P 89 0    |
|         | IPO MOLDED GRAY                         |           |
| 6914180 | SEARS DRIVER SEAT                       | P 0 0     |
| 6924200 | SEARS (2) PERSON PASSENGER SEAT         | P 582 11- |
| 6930500 | DRIVERS ARMREST - RH ONLY               | P 28 2    |
| 6930800 | BLACK SEAT COLOR IPO STD COLOR          | P 0 0     |
| 6939110 | TOOLBOX UNDER PASSENGER SEAT            | P 0 0     |
|         | NON-SUSPENSION SEAT                     |           |
| 6939400 | AIR RIDE DRIVER                         | P 0 0     |
| 6939430 | MID BACK DRIVER                         | P 0 0     |
| 6939470 | VINYL DRIVER                            | P 0 0     |
| 6939510 | NON-AIR RIDE PASSENGER                  | P 0 0     |
| 6939540 | LOW BACK PASSENGER                      | P 0 0     |
| 6939570 | VINYL PASSENGER                         | P 0 0     |
| 7000045 | HIGH-VISIBILITY INTERIOR GRABHANDLES    | P 57 0    |
|         | PAINTED YELLOW                          |           |
| 7000065 | METAL INTERIOR DOOR PANEL KICK PLATES   | P 47 2    |
| 7001520 | ADJUSTABLE STEERING COLUMN              | P 0 0     |
|         | TILT/TELESCOPE                          |           |
| 7001620 | STEERING WHEEL WITH PETERBILT LOGO      | P 0 0     |
| 7036130 | PROBILT INT CHARCOAL GRAY-CURVED ROOF   | P 170 0   |
| 7110680 | EXTERIOR CAB ENTRY GRABHANDLE           | P 179 0   |
|         | TEXTURED; NFPA COMPLIANT                |           |
| 7210420 | DARK WINDOW TINT IPO STD - DAY CAB      | P 22 0    |
| 7210540 | DAY CAB REAR WINDOW                     | P 0 0     |
| 7210550 | 1-PIECE GLASS REAR CAB WINDOW FIXED     | P 0 0     |
| 7230060 | ONE-PIECE CURVED WINDSHIELD             | P 0 0     |
| 7230360 | POWER DOOR LOCKS AND POWER WINDOW LIFTS | P 0 0     |
|         | STANDARD                                |           |
| 7322010 | COMBO FRESH AIR HEATER/AIR CONDITIONER  | P 0 0     |
| 7330880 | ADTL FINE PARTICULATE FLTR FOR HVAC SYS | P 18 0    |
|         | N/A WITH EMBER FILTER 7330890           |           |
| 7410040 | OUTSIDE SUNVISOR - STAINLESS STEEL      | P 866 4   |
|         | N/A W/ 2.1M HR SLEEPER                  |           |
| 7510060 | AERO REAR VIEW MIRROR HOUSING           | P 171 2   |
|         | BRIGHT FINISH                           |           |
| 7514010 | PETERBILT AERO REAR VIEW MIRROR         | P 336 2   |
|         | MOTORIZED & HEATED W/INTEGRATED CONVEX  |           |
| 7514050 | LOOK DOWN MIRROR OVER PASSENGER DOOR    | P 0 0     |
|         | WITH BLACK HOUSING                      |           |
| 7610040 | (1) AIR HORN ROUND, 26" LENGTH          | P 152 4   |
|         | ROOF MTD, ROUND HORN SHIELD             |           |
| 7722120 | CONCERTCLASS, AM/FM, WB, 3.5 AUX        | P 353 11  |
| 7725710 | STANDARD SPEAKER PACKAGE FOR CAB        | P 51 4    |
|         | (2) SPEAKERS                            |           |

|         |   |          |
|---------|---|----------|
| 7728030 | RADIO MUTE WHEN AUTOMATIC OR AUTOMATED TRANSMISSION IN REVERSE                | P 0 0    |
| 7728040 | BLUETOOTH PHONE & AUDIO<br>REQUIRES USB PORT                                  | P 44 0   |
| 7728050 | USB PORT  | P 38 0   |
| 7743030 | CB ANTENNA MOUNTING, DUAL LH/RH MIRROR  | P 104 2  |
| 7748145 | CB TERMINALS/WIRING MTD UNDER HEADER<br>WITH MOUNTING BRACKET                 | P 192 2  |
| 7788335 | GLOBAL TELEMATICS HARDWARE  | P 0 0    |
| 7851480 | PB ELEC WINDSHIELD WIPERS<br>W/INTERMITTENT FEATURE                           | P 0 0    |
| 7852020 | CAB AIR SUSPENSION  | P 190 15 |
| 7852050 | AUTO RESET CIRCUIT PROTECTION<br>DAYCAB AND SLEEPER                           | P 19 0   |
| 7900090 | TRIANGLE REFLECTOR KIT<br>SHIP LOOSE  | P 33 13  |
| 7900310 | FIRE EXTINGUISHER, MTD OUTBOARD DRIVER SEAT                                   | P 64 9   |
| 7900401 | CRUISE CONTROL INACTIVE WITH WIPERS ON  | P 0 0    |
| 7900402 | CRUISE INACTIVE AT WIPER SPEEDS 1-6<br>ONLY AVAIL W/ 7900401                  | P 0 0    |
| 7900520 | HEADLAMPS TO TURN ON WHEN WIPERS ON   | P 0 0    |
| 7901140 | BACKUP ALARM (87-112 DB)<br>VARIABLE ADJUSTING                                | P 44 7   |
| 8011800 | DRIVE AXLE #1 FRONT OIL TEMP GAUGE<br>LOCATED IN DIGITAL CLUSTER DISPLAY      | P 138 0  |
| 8011810 | DRIVE AXLE #2 REAR OIL TEMPERATURE GAUG<br>LOCATED IN DIGITAL CLUSTER DISPLAY | P 145 0  |
| 8011850 | TRANSMISSION OIL TEMPERATURE (MAIN)<br>LOCATED IN DIGITAL CLUSTER DISPLAY     | P 30 0   |
| 8021380 | AIR RESTRICTION INDICATOR MTD ON AIR<br>CLEANER, INTAKE PIPING, OR FIREWALL   | P 0 0    |
| 8041200 | DUAL SCALE SPEEDOMETER MPH OVER KPH   | P 0 0    |
| 8070260 | SWITCH TO DEACTIVATE ATC<br>TRACTION CONTROL                                  | P 0 0    |
| 8070390 | ENGINE HOURMETER GAUGE<br>LOCATED IN DIGITAL CLUSTER DISPLAY                  | P 0 0    |
| 8070450 | ENGINE PTO HOURMETER GAUGE<br>LOCATED IN DIGITAL CLUSTER DISPLAY              | P 0 0    |
| 8070810 | ENGINE MANIFOLD PRESSURE (TURBO BOOST)<br>LOCATED IN DIGITAL CLUSTER DISPLAY  | P 0 0    |
| 8070820 | ENGINE PERCENT TORQUE<br>LOCATED IN DIGITAL CLUSTER DISPLAY                   | P 0 0    |
| 8070860 | MAIN INSTRUMENTATION PANEL<br>DIGITAL CLUSTER 7" DISPLAY                      | P 0 0    |
| 8070940 | VOLTMETER GAUGE (MD/520 ONLY)<br>LOCATED IN DIGITAL CLUSTER DISPLAY           | P 0 0    |
| 8073040 | (1) ADDITIONAL ELECTRIC OVER AIR<br>SPARE ROCKER SWITCH, ON/OFF ONLY          | P 39 0   |
| 8076120 | (1) ADDITIONAL DASH SWITCH WITH WIRING<br>AT BOC/BOS                          | P 157 0  |
| 8111110 | HEADLIGHTS COMPOSITE FENDER MOUNTED<br>INTEGRAL DRL/PARK, TURN, & SIDE MARKER | P 0 0    |
| 8121210 | (5) MARKER LIGHTS, CHROME HOUSING<br>AERO LED                                 | P 63 0   |
| 8134160 | SELF-CANCELING TURN SIGNAL  | P 0 0    |
| 8134180 | DAYTIME RUNNING LIGHTS, MTD IN BUMPER<br>DRIVEN BY CHASSIS HEIGHT             | P 194 0  |
| 8140080 | LED STOP/TURN/TAIL/BACKUP<br>BRACKET MOUNTED LH/RH EOF                        | P 0 0    |
| 8140850 | MOVEABLE EOF XMBR FOR MTG TAILLIGHTS<br>WITH OR WITHOUT EOF XMBR & SQUARE EOF | P 0 0    |
| 8153100 | (1) F/O LOAD LIGHT, SWITCH, 10' WIRE<br>COIL UNDER/IN CAB/SLEEPER<br>PAINT    | P 59 2   |

|         |   |          |
|---------|---|----------|
| 8500710 | STANDARD PAINT COLOR SELECTION          | P 200- 0 |
| 8530770 | (1) COLOR AXALTA TWO STAGE PAINT        | P 0 0    |
|         | CAB/HOOD                                |          |
| N8502   | A - L0006EY WHITE                       |          |
| N8520   | FRAME L0001EA BLACK                     |          |
| N8530   | FENDER L0006EY WHITE                    |          |
| N8540   | HOOD TOP L0006EY WHITE                  |          |
| N8550   | CAB ROOF L0006EY WHITE                  |          |
| 8999980 | SHIPPING ADDRESS CHANGE                 | P 0 0    |
|         | MISCELLANEOUS                           |          |
| 9400091 | PETERBILT CLASS 7 STANDARD COVERAGE     | P 0 0    |
|         | 1 YEAR/UNLIMITED MILES/KM               |          |
| 9400094 | PACCAR PX-9 STANDARD COVERAGE           | P 0 0    |
|         | 2 YRS/250,000 MI (402,336 KM)/6,250 HRS |          |
| 9402417 | 1 YEAR TOWING                           | P 0 0    |
| 9408634 | SMARTLINQ RD - 5YR SUB                  | P 0 0    |
|         | PACCAR PX ENGINES                       |          |
| 9408703 | BASE WARR: EMISSIONS                    | P 0 0    |
|         | 5YR/100K MI-EPA ENGINE                  |          |
| 9408770 | PRODUCTION VALIDATION UNIT (\$750)      | U 0 0    |
| 9408777 | PRODUCTION VALIDATION UNIT (\$3,000)    | U 0 0    |
| 9408781 | PRODUCTION VALIDATION UNIT (\$4,000)    | U 0 0    |
| 9408783 | PRODUCTION VALIDATION UNIT (\$6,700)    | U 0 0    |
| 9408784 | PRODUCTION VALIDATION UNIT (\$7,250)    | U 0 0    |
| 9408931 | PDI AT EXCELLENCE PETERBILT LOCATION    | P 0 0    |
| 9409045 | AERO HOOD (MODEL 548)                   | P 0 0    |
| 9409093 | STATE REGISTRY: TEXAS                   | P 0 0    |
| 9409645 | MODEL YEAR 2025 ENGINE                  | P 0 0    |
| 9409749 | 2024 SERIES EMISSIONS ENGINE            | P 0 0    |
|         | WARRANTY ONLY                           |          |
| 9490117 | APPLICATIONS CONTACT:                   | U 0 0    |
|         | MICHAEL GRISSOM (940)-591-4137          |          |
|         | NOTES                                   |          |
| 9800001 | REQUESTS PRECEDED BY N98XX NARRATIVES   | U 0 0    |
|         | ARE DISAPPROVED--CONTACT INSIDE SALES   |          |
| N9801   | FF: BR 20PLY 315/80R22.5 M870           |          |
| N9802   | FF: BR 20PLY 315/80R22.5 M870           |          |
| N9803   | FF: BR 20PLY 315/80R22.5 M870           |          |
| N9804   | FF: BR 20PLY 315/80R22.5 M870           |          |
| N9994   | EMAIL: ANGUIANOD@RUSHENTERPRISES.COM    |          |
| N9995   | CELL PHONE:                             |          |
| N9996   | SALESPERSON ID: [REDACTED]              |          |
| N9997   | DEALER CONTACT                          |          |
| N9998   | NAME: [REDACTED]                        |          |



**Sam Pack's Five Star Ford**  
**1635 S. IH 35E Carrollton Texas, 75006**  
**972-446-5031**

## CUSTOMIZED PRODUCT PRICING SUMMARY BASED ON CONTRACT

### Cars and Light Trucks

**Team Members - Kevin Moore - Austin Moore - Casey Marshall - Jorge Guerra - Alan Rosner**

BuyBoard 724-23

**End User:** City of Farmers Branch **Sam Pack's Rep:** Alan Rosner

---

**Contact:** Kevin Reinartz **Date:** 2/19/2025

Contact: Kevin Roman Date: 2/10/2020

|                         |  |                |              |
|-------------------------|--|----------------|--------------|
| <b>Contact TN/Email</b> | <a href="mailto:kevin.reinartz@farmersbranchtx.gov">kevin.reinartz@farmersbranchtx.gov</a> | <b>Phone #</b> | 972-919-8777 |
|-------------------------|--|----------------|--------------|

|                   |  |         |              |
|-------------------|--|---------|--------------|
| Contact T/V/Email | <a href="mailto:Kevin.Fellanz@jammersbranchtx.gov">Kevin.Fellanz@jammersbranchtx.gov</a> | Phone # | 972-919-8777 |
|-------------------|--|---------|--------------|

|                             |  |            |            |
|-----------------------------|--|------------|------------|
| <b>Product Description:</b> | 2024 Ford Expedition - Extended Length | Color Code | Atlas Blue |
|-----------------------------|--|------------|------------|

[illegible]

|           |                   |             |                    |                     |
|-----------|-------------------|-------------|--------------------|---------------------|
| <b>A.</b> | <b>Bid Line #</b> | <b>#108</b> | <b>Base Price:</b> | <b>\$ 48,999.00</b> |
|-----------|-------------------|-------------|--------------------|---------------------|

---

|  |  |  |  |  |
|--|--|--|--|--|
| <b>B. Published Options (Itemize Each Below)</b> |  |  |  |  |
|  |  |  |  |  |

[illegible]

|  |  |  |  |  |                                 |             |
|--|--|--|--|--|---------------------------------|-------------|
|  |  |  |  |  | Total of B. - Published Options | \$ 1,825.00 |
|--|--|--|--|--|---------------------------------|-------------|

|                                    |  |  |  |  |  |  |  |  |  |
|------------------------------------|--|--|--|--|--|--|--|--|--|
| <b>C. Dealer Published Options</b> |  |  |  |  |  |  |  |  |  |
|------------------------------------|--|--|--|--|--|--|--|--|--|

[illegible]

|  |  |      |
|--|--|------|
| Total of C. - Dealer Published Options |  | \$ - |
|--|--|------|

| D. Off Menu Options |  |  |  |  |  |
|---------------------|--|--|--|--|--|
|                     |  |  |  |  |  |

[illegible]

|  |           |       |                                |        |
|--|-----------|-------|--------------------------------|--------|
| Off Menu Options limited to 25% of Published Price | Current % | 0.00% | Total of D. - Off Menu Options | \$0.00 |
|--|-----------|-------|--------------------------------|--------|

|                         |                              |             |
|-------------------------|------------------------------|-------------|
| <b>Delivery Charges</b> | <b>0 Miles @ \$1.99/mile</b> | <b>\$ -</b> |
|-------------------------|------------------------------|-------------|

|                               |            |
|-------------------------------|------------|
| Manufacturer Options Discount | \$ (91.25) |
|-------------------------------|------------|

|   |          |                 |
|---|----------|-----------------|
| Requested aftermarket equipment listed in Section C and D |          | \$ -            |
| Electrician Expenses                                      | 120 Days | \$7.62 Per Diem |
|   |          | \$ 914.82       |

|                   |          |                 |           |
|-------------------|----------|-----------------|-----------|
| Floorplan Expense | 120 Days | \$7.62 Per Diem | \$ 914.83 |
|                   | 120 Days | \$7.62 Per Diem | \$ 914.83 |

|                       |          |                 |           |
|-----------------------|----------|-----------------|-----------|
| Lot Insurance Expense | 120 Days | \$7.62 Per Diem | \$ 914.83 |
|-----------------------|----------|-----------------|-----------|

|                                       |              |
|---------------------------------------|--------------|
| Manufacturer Destination and Delivery | \$ 1,825.00  |
| Total Each                            | \$ 54,287.41 |

|  |            |              |
|--|------------|--------------|
|  | Total Each | \$ 54,367.41 |
|  |            | \$ 54,367.41 |

|                  |          |       |              |
|------------------|----------|-------|--------------|
| Quantity Ordered | <u>1</u> | X F = | \$ 54,387.41 |
|------------------|----------|-------|--------------|

|                           |                  |
|---------------------------|------------------|
| <b>Administrative Fee</b> | <b>\$ 400.00</b> |
|---------------------------|------------------|

|   |                    |
|---|--------------------|
| Trade In Allowance - Non-Equipment debits and credits | \$ -               |
| <b>TOTAL PURCHASE PRICE INCLUDING ADMIN FEE</b>       | <b>\$51,707.44</b> |

|   |                    |
|---|--------------------|
| <b>TOTAL PURCHASE PRICE INCLUDING ADMIN FEE</b> | <b>\$54,787.41</b> |
|---|--------------------|

## Sam Pack's Five Star Ford - Aftermarket Build Sheet

PO# Parts  
Date Parts Ordered  
Agency Name  
Vehicle Type  
Salesperson

|                           |  |
|---------------------------|--|
| PO # Labor                |  |
| Date to Chevy             |  |
| Last Part ETA             |  |
| Vehicle ETA               |  |
| Quantity of Vehicle order |  |

1

Stock #s

[illegible]

|                    |               |
|--------------------|---------------|
| <b>Parts Total</b> | <b>\$0.00</b> |
|--------------------|---------------|

|                       |               |
|-----------------------|---------------|
| <b>Total of Build</b> | <b>\$0.00</b> |
|-----------------------|---------------|

### Labor Hours

0

### Labor Price

**\$0.00**

[illegible]

**Sam Pack's Five Star Ford**  
**1635 S. IH 35E Carrollton Texas, 75006**  
**972-446-5031**

## CUSTOMIZED PRODUCT PRICING SUMMARY BASED ON CONTRACT

### Cars and Light Trucks

**Team Members - John Butler - Kevin Moore - Casey Marshall - Jorge Guerra - Alan Rosher**

H-GAC VE05-24

**End User:** City of Farmers Branch

**End User:** City of Farmers Branch **Sam Pack's Rep:** Alan Rosner

**Contact:** Kevin Reinartz

**Contact:** Kevin Reinartz **Date:** 2/28/2025

**Contact TN/Email** [kevin.reinartz@farmersbranchtx.gov](mailto:kevin.reinartz@farmersbranchtx.gov)

|                         |  |                |              |
|-------------------------|--|----------------|--------------|
| <b>Contact TN/Email</b> | <a href="mailto:kevin.reinartz@farmersbranchtx.gov">kevin.reinartz@farmersbranchtx.gov</a> | <b>Phone #</b> | 972-919-8777 |
|-------------------------|--|----------------|--------------|

|                             |                 |
|-----------------------------|-----------------|
| <b>Product Description:</b> | 2025 Ford F-150 |
|-----------------------------|-----------------|

|            |     |
|------------|-----|
| Color Code | RED |
|------------|-----|

|           |                   |              |
|-----------|-------------------|--------------|
| <b>A.</b> | <b>Bid Line #</b> | <b>F-150</b> |
|-----------|-------------------|--------------|

|           |                   |              |                    |
|-----------|-------------------|--------------|--------------------|
| <b>A.</b> | <b>Bid Line #</b> | <b>F-150</b> | <b>Base Price:</b> |
|-----------|-------------------|--------------|--------------------|

**\$ 38,565.00**

**B. Published Options (Itemize Each Below)**

[illegible]

|  |  |                    |
|--|--|--------------------|
| <b>Total of B. - Published Options</b> |  | <b>\$ 6,665.00</b> |
|--|--|--------------------|

|                                    |  |  |  |  |
|------------------------------------|--|--|--|--|
| <b>C. Dealer Published Options</b> |  |  |  |  |
|------------------------------------|--|--|--|--|

[illegible]

|   |                     |
|---|---------------------|
| <b>Total of C. - Dealer Published Options</b> | <b>\$ 22,010.00</b> |
|---|---------------------|

#### D. Off Menu Options

| Code | Description | Bid Price   | Code | Description | Bid Price |
|------|-------------|-------------|------|-------------|-----------|
|      | Topper      | \$4,650.00  |      |             |           |
|      | Kusmall     | \$ 2,450.00 |      |             |           |
|      |             |             |      |             |           |
|      |             |             |      |             |           |
|      |             |             |      |             |           |
|      |             |             |      |             |           |
|      |             |             |      |             |           |
|      |             |             |      |             |           |
|      |             |             |      |             |           |
|      |             |             |      |             |           |
|      | YoY 2025    | \$2,180.00  |      |             |           |
|      |             |             |      |             |           |

|  |           |               |
|--|-----------|---------------|
| Off Menu Options limited to 25% of Published Price | Current % | <b>13.80%</b> |
|--|-----------|---------------|

|  |           |        |                                |            |
|--|-----------|--------|--------------------------------|------------|
| Off Menu Options limited to 25% of Published Price | Current % | 13.80% | Total of D. - Off Menu Options | \$9,280.00 |
|--|-----------|--------|--------------------------------|------------|

|                         |                                |
|-------------------------|--------------------------------|
| <b>Delivery Charges</b> | <b>301 Miles @ \$1.99/mile</b> |
|-------------------------|--------------------------------|

|                         |                                |                  |
|-------------------------|--------------------------------|------------------|
| <b>Delivery Charges</b> | <b>301 Miles @ \$1.99/mile</b> | <b>\$ 598.99</b> |
|-------------------------|--------------------------------|------------------|

### Manufacturer Options Discount

Requested aftermarket equipment listed in Section C and D

|                  |   |   |            |              |            |              |
|------------------|---|---|------------|--------------|------------|--------------|
| Quantity Ordered | 4 | X | Unit Price | \$ 19,144.75 | Total Each | \$ 76,585.79 |
|                  |   |   |            |              |            | \$ 76,585.79 |

**Quantity Ordered** 1

|                  |          |       |              |
|------------------|----------|-------|--------------|
| Quantity Ordered | <u>1</u> | X F = | \$ 76,585.79 |
|------------------|----------|-------|--------------|

|                           |  |
|---------------------------|--|
| <b>Administrative Fee</b> |  |
|---------------------------|--|

**Trade In Allowance - Non-Equipment debits and credits**

|   |                    |
|---|--------------------|
| <b>TOTAL PURCHASE PRICE INCLUDING ADMIN FEE</b> | <b>\$77,185.79</b> |
|---|--------------------|

## Sam Pack's Five Star Ford - Aftermarket Build Sheet

PO# Parts  
Date Parts Ordered  
Agency Name  
Vehicle Type  
Salesperson

|                           |  |
|---------------------------|--|
| PO # Labor                |  |
| Date to Chevy             |  |
| Last Part ETA             |  |
| Vehicle ETA               |  |
| Quantity of Vehicle order |  |

1

Stock #s

[illegible]

|                    |               |
|--------------------|---------------|
| <b>Parts Total</b> | <b>\$0.00</b> |
|--------------------|---------------|

|                       |               |
|-----------------------|---------------|
| <b>Total of Build</b> | <b>\$0.00</b> |
|-----------------------|---------------|

## Labor Hours

0

## Labor Price

**\$0.00**

[illegible]

**Sam Pack's Five Star Ford**  
**1635 S. IH 35E Carrollton Texas, 75006**  
**972-446-5031**

## CUSTOMIZED PRODUCT PRICING SUMMARY BASED ON CONTRACT

### Cars and Light Trucks

**Team Members - John Butler - Kevin Moore - Casey Marshall - Jorge Guerra - Alan Rosher**

**H-GAC VE05-24**

**End User:** City of Farmers Branch

**End User:** City of Farmers Branch **Sam Pack's Rep:** Alan Rosner

**Contact:** Kevin Reinartz

**Contact:** Kevin Reinartz **Date:** 2/19/2025

**Contact TN/Email** [kevin.reinartz@farmersbranchtx.gov](mailto:kevin.reinartz@farmersbranchtx.gov)

|                         |  |                |              |
|-------------------------|--|----------------|--------------|
| <b>Contact TN/Email</b> | <a href="mailto:kevin.reinartz@farmersbranchtx.gov">kevin.reinartz@farmersbranchtx.gov</a> | <b>Phone #</b> | 972-919-8777 |
|-------------------------|--|----------------|--------------|

|                             |                 |
|-----------------------------|-----------------|
| <b>Product Description:</b> | 2024 Ford F-150 |
|-----------------------------|-----------------|

|            |            |
|------------|------------|
| Color Code | Atlas Blue |
|------------|------------|

|           |                   |              |
|-----------|-------------------|--------------|
| <b>A.</b> | <b>Bid Line #</b> | <b>F-150</b> |
|-----------|-------------------|--------------|

|           |                   |              |                    |
|-----------|-------------------|--------------|--------------------|
| <b>A.</b> | <b>Bid Line #</b> | <b>F-150</b> | <b>Base Price:</b> |
|-----------|-------------------|--------------|--------------------|

**\$ 38,565.00**

**B. Published Options (Itemize Each Below)**

[illegible]

|                                 |             |
|---------------------------------|-------------|
| Total of B. - Published Options | \$ 6,665.00 |
|---------------------------------|-------------|

|                                    |  |  |  |  |
|------------------------------------|--|--|--|--|
| <b>C. Dealer Published Options</b> |  |  |  |  |
|------------------------------------|--|--|--|--|

[illegible]

|  |      |
|--|------|
| Total of C. - Dealer Published Options | \$ - |
|--|------|

#### D. Off Menu Options

[illegible]

|  |           |               |
|--|-----------|---------------|
| Off Menu Options limited to 25% of Published Price | Current % | <b>10.86%</b> |
|--|-----------|---------------|

|  |           |        |                                |            |
|--|-----------|--------|--------------------------------|------------|
| Off Menu Options limited to 25% of Published Price | Current % | 10.86% | Total of D. - Off Menu Options | \$4,912.00 |
|--|-----------|--------|--------------------------------|------------|

|                         |                                |                  |
|-------------------------|--------------------------------|------------------|
| <b>Delivery Charges</b> | <b>301 Miles @ \$1.99/mile</b> | <b>\$ 598.99</b> |
|-------------------------|--------------------------------|------------------|

|                               |  |             |
|-------------------------------|--|-------------|
| Manufacturer Options Discount |  | \$ (533.20) |
|-------------------------------|--|-------------|

|   |      |
|---|------|
| Requested aftermarket equipment listed in Section C and D | \$ - |
|---|------|

|  |            |              |
|--|------------|--------------|
|  | Total Each | \$ 50,207.79 |
|--|------------|--------------|

|                  |   |       |              |
|------------------|---|-------|--------------|
| Quantity Ordered | 1 | X F = | \$ 50,207.79 |
|------------------|---|-------|--------------|

|                           |                  |
|---------------------------|------------------|
| <b>Administrative Fee</b> | <b>\$ 600.00</b> |
|---------------------------|------------------|

|   |      |
|---|------|
| Trade In Allowance - Non-Equipment debits and credits | \$ - |
|---|------|

|   |                    |
|---|--------------------|
| <b>TOTAL PURCHASE PRICE INCLUDING ADMIN FEE</b> | <b>\$50,807.79</b> |
|---|--------------------|

## Sam Pack's Five Star Ford - Aftermarket Build Sheet

PO# Parts  
Date Parts Ordered  
Agency Name  
Vehicle Type  
Salesperson

|                           |  |
|---------------------------|--|
| PO # Labor                |  |
| Date to Chevy             |  |
| Last Part ETA             |  |
| Vehicle ETA               |  |
| Quantity of Vehicle order |  |

1

Stock #s

[illegible]

|                    |               |
|--------------------|---------------|
| <b>Parts Total</b> | <b>\$0.00</b> |
|--------------------|---------------|

|                       |               |
|-----------------------|---------------|
| <b>Total of Build</b> | <b>\$0.00</b> |
|-----------------------|---------------|

## Labor Hours

0

## Labor Price

**\$0.00**

[illegible]

Sam Pack's Five Star Ford  
1635 S. IH 35E Carrollton Texas, 75006  
972-446-5031

CUSTOMIZED PRODUCT PRICING SUMMARY BASED ON CONTRACT

Cars and Light Trucks

Team Members - John Butler - Kevin Moore - Casey Marshall - Jorge Guerra - Alan Rosner

H-GAC VE05-24

End User: City of Farmers Branch

Sam Pack's Rep: Alan Rosner

Contact: Kevin Reinartz

Date: 2/19/2025

Contact TN/Email kevin.reinartz@farmersbranchtx.gov

Phone # 972-919-8777

Product Description: 2024 Ford F-250

Color Code White

A. Bid Line # F-250

Base Price: \$ 46,965.00

B. Published Options (Itemize Each Below)

| Code                            | Description                             | Bid Price   | Code | Description            | Bid Price   |
|---------------------------------|---|-------------|------|------------------------|-------------|
|                                 | Automatic                               | Included    |      |                        |             |
|                                 | Air Conditoning - Power Steering/Brakes | Included    |      | Have one left in stock |             |
|                                 | Power windows- Locks Cruise             | Included    |      |                        |             |
|                                 | UPGRADE:                                |             |      |                        |             |
|                                 | Crew Cab                                | \$ 3,250.00 |      |                        |             |
|                                 | Locking Axle                            | \$ 430.00   |      |                        |             |
|                                 | 120V 400W Outlet                        | \$ 175.00   |      |                        |             |
|                                 | Upfitter Switches                       | \$ 165.00   |      |                        |             |
|                                 | 250 Amp Alt                             | \$ 85.00    |      |                        |             |
|                                 | Cloth 40/20/40                          | \$ 315.00   |      |                        |             |
|                                 | XL Chrome Pkg                           | \$ 225.00   |      |                        |             |
|                                 |   |             |      |                        |             |
| Total of B. - Published Options |   |             |      |                        | \$ 4,645.00 |

C. Dealer Published Options

| Code                                   | Description | Bid Price | Code | Description | Bid Price |
|--|-------------|-----------|------|-------------|-----------|
|  |             |           |      |             |           |
|  |             |           |      |             |           |
|  |             |           |      |             |           |
|  |             |           |      |             |           |
|  |             |           |      |             |           |
|  |             |           |      |             |           |
|  |             |           |      |             |           |
|  |             |           |      |             |           |
|  |             |           |      |             |           |
|  |             |           |      |             |           |
|  |             |           |      |             |           |
|  |             |           |      |             |           |
|  |             |           |      |             |           |
|  |             |           |      |             |           |
| Total of C. - Dealer Published Options |             |           |      |             | \$ -      |

D. Off Menu Options

| Code                           | Description          | Bid Price   | Code | Description | Bid Price  |
|--------------------------------|----------------------|-------------|------|-------------|------------|
|                                | Spray Liner          | \$499.00    |      |             |            |
|                                | Headache Rack        | \$ 1,195.00 |      |             |            |
|                                | Whelen LB Amber/Blue | \$ 3,218.00 |      |             |            |
|                                | Core-C Controller    | Included    |      |             |            |
|                                | Installed on HAR     | Included    |      |             |            |
|                                | Running Boards       | \$499.00    |      |             |            |
|                                |                      |             |      |             |            |
|                                |                      |             |      |             |            |
|                                |                      |             |      |             |            |
|                                |                      |             |      |             |            |
|                                |                      |             |      |             |            |
|                                |                      |             |      |             |            |
| Total of D. - Off Menu Options |                      |             |      |             | \$5,411.00 |

Off Menu Options limited to 25% of Published Price

Current % 10.48%

Delivery Charges 0 Miles @ \$1.99/mile

Manufacturer Options Discount

Requested aftermarket equipment listed in Section C and D

Quantity Ordered 1 X F =

Administrative Fee

Trade In Allowance - Non-Equipment debits and credits

TOTAL PURCHASE PRICE INCLUDING ADMIN FEE

Total Each

\$ 56,649.40

\$ 56,649.40

\$ 600.00

\$57,249.40

## Sam Pack's Five Star Ford - Aftermarket Build Sheet

PO# Parts  
Date Parts Ordered  
Agency Name  
Vehicle Type  
Salesperson

|                           |  |
|---------------------------|--|
| PO # Labor                |  |
| Date to Chevy             |  |
| Last Part ETA             |  |
| Vehicle ETA               |  |
| Quantity of Vehicle order |  |

|   |
|---|
|   |
|   |
|   |
|   |
| 1 |

Stock #s

[illegible]

|                    |               |
|--------------------|---------------|
| <b>Parts Total</b> | <b>\$0.00</b> |
|--------------------|---------------|

|                       |               |
|-----------------------|---------------|
| <b>Total of Build</b> | <b>\$0.00</b> |
|-----------------------|---------------|

## Labor Hours

0

## Labor Price

**\$0.00**

[illegible]



**Sam Pack's Five Star Ford**  
**1635 S. IH 35E Carrollton Texas, 75006**  
**972-446-5031**

## CUSTOMIZED PRODUCT PRICING SUMMARY BASED ON CONTRACT

### Cars and Light Trucks

**Team Members - Kevin Moore - Austin Moore - Casey Marshall - Jorge Guerra - Alan Rosner**

BuyBoard 724-23

**End User:** City of Farmers Branch **Sam Pack's Rep:** Alan Rosner

**End User:** City of Farmers Branch **Sam Pack's Rep:** Alan Rosner

**Contact:** Kevin Reinartz **Date:** 3/5/2025

**Contact:** Kevin Reinartz **Date:** 3/5/2025

| Contact TN/Email | <a href="#">On File</a> | Phone # | On File |
|------------------|-------------------------|---------|---------|
|------------------|-------------------------|---------|---------|

|                             |                 |                   |       |
|-----------------------------|-----------------|-------------------|-------|
| <b>Product Description:</b> | 2025 Ford F-550 | <b>Color Code</b> | White |
|-----------------------------|-----------------|-------------------|-------|

|                             |                 |                   |       |
|-----------------------------|-----------------|-------------------|-------|
| <b>Product Description:</b> | 2025 Ford F-550 | <b>Color Code</b> | White |
|-----------------------------|-----------------|-------------------|-------|

|           |                   |             |                    |                     |
|-----------|-------------------|-------------|--------------------|---------------------|
| <b>A.</b> | <b>Bid Line #</b> | <b>#122</b> | <b>Base Price:</b> | <b>\$ 46,700.00</b> |
|-----------|-------------------|-------------|--------------------|---------------------|

|           |                   |             |                    |                     |
|-----------|-------------------|-------------|--------------------|---------------------|
| <b>A.</b> | <b>Bid Line #</b> | <b>#122</b> | <b>Base Price:</b> | <b>\$ 46,700.00</b> |
|-----------|-------------------|-------------|--------------------|---------------------|

**B. Published Options (Itemize Each Below)**

[illegible]

|  |                                 |             |
|--|---------------------------------|-------------|
|  | Total of B. - Published Options | \$ 3,680.00 |
|--|---------------------------------|-------------|

|                                    |  |
|------------------------------------|--|
| <b>C. Dealer Published Options</b> |  |
|------------------------------------|--|

| Code | Description                  | Bid Price    | Code | Description | Bid Price |
|------|------------------------------|--------------|------|-------------|-----------|
|      | Lightbar amber Blue          | \$ 3,210.00  |      |             |           |
|      | Core C                       | \$ 750.00    |      |             |           |
|      | Perimeter Emergency Lighting | \$ 1,520.00  |      |             |           |
|      | Backup Camera                | \$ 465.00    |      |             |           |
|      | Contractor's Dump            | \$ 23,861.00 |      |             |           |
|      | Poly Exention                | Included     |      |             |           |
|      | Hitch                        | \$ 535.00    |      |             |           |
|      | Tarp                         | \$ 1,420.00  |      |             |           |
|      | Toolboxes Both Sides         | \$ 1,050.00  |      |             |           |
|      | Elec over Hydraulic lift     | Included     |      |             |           |
|      |                              |              |      |             |           |
|      |                              |              |      |             |           |

|   |                     |
|---|---------------------|
| <b>Total of C. - Dealer Published Options</b> | <b>\$ 32,811.00</b> |
|---|---------------------|

#### D. Off Menu Options

[illegible]

|  |           |       |                                |            |
|--|-----------|-------|--------------------------------|------------|
| Off Menu Options limited to 25% of Published Price | Current % | 2.52% | Total of D. - Off Menu Options | \$2,100.00 |
|--|-----------|-------|--------------------------------|------------|

|                         |                              |             |
|-------------------------|------------------------------|-------------|
| <b>Delivery Charges</b> | <b>0 Miles @ \$1.99/mile</b> | <b>\$ -</b> |
|-------------------------|------------------------------|-------------|

|                               |       |                      |             |
|-------------------------------|-------|----------------------|-------------|
| Delivery Charges              | _____ | 5 miles @ \$100/mile | \$          |
| Manufacturer Options Discount | _____ |                      | \$ (184.00) |

|   |      |
|---|------|
| Requested aftermarket equipment listed in Section C and D | \$ - |
|---|------|

|                   |         |                  |           |
|-------------------|---------|------------------|-----------|
| Floorplan Expense | 30 Days | \$12.79 Per Diem | \$ 383.81 |
|-------------------|---------|------------------|-----------|

|                       |         |                  |           |
|-----------------------|---------|------------------|-----------|
| Lot Insurance Expense | 30 Days | \$12.79 Per Diem | \$ 383.81 |
|-----------------------|---------|------------------|-----------|

|                                       |  |    |          |
|---------------------------------------|--|----|----------|
| Manufacturer Destination and Delivery |  | \$ | 1,995.00 |
|---------------------------------------|--|----|----------|

|  |            |              |
|--|------------|--------------|
|  | Total Each | \$ 87,869.62 |
|--|------------|--------------|

|                  |   |       |              |
|------------------|---|-------|--------------|
| Quantity Ordered | 1 | X F = | \$ 87,869.62 |
|------------------|---|-------|--------------|

|                    |  |    |        |
|--------------------|--|----|--------|
| Administrative Fee |  | \$ | 400.00 |
|--------------------|--|----|--------|

|   |      |
|---|------|
| Trade In Allowance - Non-Equipment debits and credits | \$ - |
|---|------|

|   |                    |
|---|--------------------|
| <b>TOTAL PURCHASE PRICE INCLUDING ADMIN FEE</b> | <b>\$88,269.62</b> |
|---|--------------------|

## Sam Pack's Five Star Ford - Aftermarket Build Sheet

PO# Parts  
Date Parts Ordered  
Agency Name  
Vehicle Type  
Salesperson

|                           |  |
|---------------------------|--|
| PO # Labor                |  |
| Date to Chevy             |  |
| Last Part ETA             |  |
| Vehicle ETA               |  |
| Quantity of Vehicle order |  |

1

Stock #s

[illegible]

|                    |               |
|--------------------|---------------|
| <b>Parts Total</b> | <b>\$0.00</b> |
|--------------------|---------------|

|                       |               |
|-----------------------|---------------|
| <b>Total of Build</b> | <b>\$0.00</b> |
|-----------------------|---------------|

### Labor Hours

0

### Labor Price

**\$0.00**

[illegible]

**Sam Pack's Five Star Ford**  
**1635 S. IH 35E Carrollton Texas, 75006**  
**972-446-5031**

**CUSTOMIZED PRODUCT PRICING SUMMARY BASED ON CONTRACT**  
**Cars and Light Trucks**  
**Team Members - John Butler - Kevin Moore - Casey Marshall - Jorge Guerra - Alan Rosner**  
**H-GAC VE05-24**

**Team Members - John Butler - Kevin Moore - Casey Marshall - Jorge Guerra - Alan Rosner**  
**H-GAC VE05-24**

**Sam Pack's Rep:** Alan Rosner

**Date:** 2/19/2025

Phone # 972-919-8777

|            |                   |
|------------|-------------------|
| Color Code | E4 Vermillion Red |
|------------|-------------------|

|                    |                     |
|--------------------|---------------------|
| <b>Base Price:</b> | <b>\$ 48,760.00</b> |
|--------------------|---------------------|

[illegible]

|                                 |           |
|---------------------------------|-----------|
| Total of B. - Published Options | \$ 500.00 |
|---------------------------------|-----------|

[illegible]

|  |  |      |
|--|--|------|
|  | Total of C. - Dealer Published Options | \$ - |
|--|--|------|

| Code | Description                      | Bid Price    | Code | Description | Bid Price |
|------|----------------------------------|--------------|------|-------------|-----------|
|      | Basic Ready for the road         |              |      |             |           |
|      | Slick-Top Version - No Partition |              |      |             |           |
|      | No Gunlock - No Equipment Box    | \$ 11,960.00 |      |             |           |
|      | Inner Edge - Windshield - R/B    | Included     |      |             |           |
|      | Core Siren system with speaker   | Included     |      |             |           |
|      | Havis Console                    | Included     |      |             |           |
|      | Quarter Lights                   | Included     |      |             |           |
|      | Headlight Flasher                | Included     |      |             |           |
|      | 4 Corner Hideaway (Vertex)       | Included     |      |             |           |
|      | Ion's around back license plate  | Included     |      |             |           |
|      | Hatch lights                     | Included     |      |             |           |
|      | Police frontbumper               | Included     |      |             |           |

|                                       |                    |
|---------------------------------------|--------------------|
| <b>Total of D. - Off Menu Options</b> | <b>\$11,960.00</b> |
|---------------------------------------|--------------------|

|    |   |
|----|---|
| \$ | - |
|----|---|

|    |         |
|----|---------|
| \$ | (40.00) |
|----|---------|

|    |   |
|----|---|
| \$ | - |
|----|---|

|                   |                     |
|-------------------|---------------------|
| <b>Total Each</b> | <b>\$ 61,180.00</b> |
|-------------------|---------------------|

|    |            |
|----|------------|
| \$ | 122,360.00 |
|----|------------|

|    |        |
|----|--------|
| \$ | 600.00 |
|----|--------|

**\$122,960.00**

## Sam Pack's Five Star Ford - Aftermarket Build Sheet

PO# Parts  
Date Parts Ordered  
Agency Name  
Vehicle Type  
Salesperson

|                           |  |
|---------------------------|--|
| PO # Labor                |  |
| Date to Chevy             |  |
| Last Part ETA             |  |
| Vehicle ETA               |  |
| Quantity of Vehicle order |  |

2

Stock #s

[illegible]

|                    |               |
|--------------------|---------------|
| <b>Parts Total</b> | <b>\$0.00</b> |
|--------------------|---------------|

|                       |               |
|-----------------------|---------------|
| <b>Total of Build</b> | <b>\$0.00</b> |
|-----------------------|---------------|

## Labor Hours

0

### Labor Price

**\$0.00**

[illegible]