

Liberty Plaza Relocation – Site Selection Report

Purpose

The purpose of this document is to provide information and analysis for selecting a new site for the relocation of Liberty Plaza. This report outlines the existing conditions, proposed site options, and considerations for future development.

Existing Liberty Plaza

Current Location: 12700 N. Stemmons Freeway

Site Size: approximately 4.62 acres



Current Features

- Statues: 3
- Plaques: approximately 8 plaques
- Flagpole: Large, central feature
- Walking Trail: approximately 1,303 feet of trail

Note: The existing site does not have dedicated parking. Relocation will require moving all existing features and incorporating them into a new design that includes a walking path.

Existing site:



Key Considerations for New Location

- Accessibility: ADA compliance and ease of access for visitors
- Parking Availability: Adequate and convenient parking
- Visibility: Prominent location within the community
- Space for Future Expansion: Ability to accommodate additional features
- Cost: Budget implications for relocation and development

Elements to Consider for the New Site:

- Parking
- Potential Future Services
- Hosting Events
- Space for Passive Recreation or Events

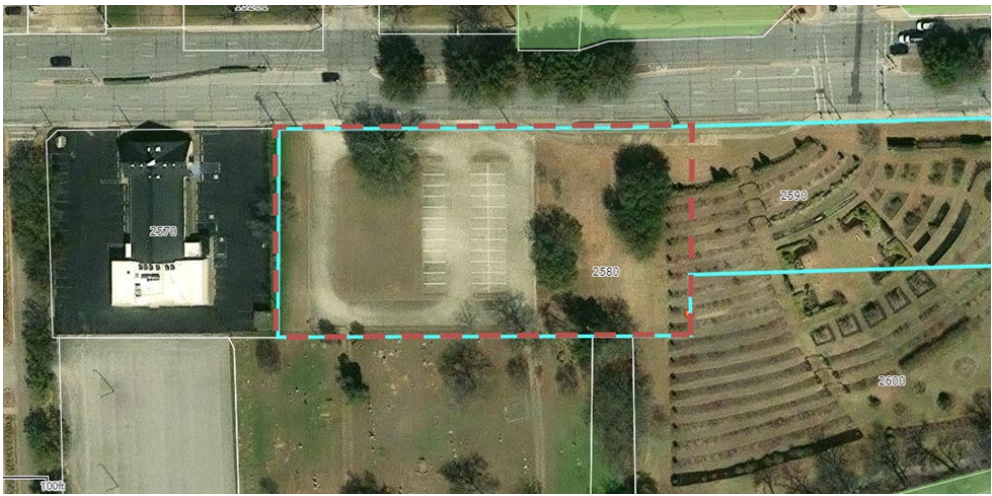
Site Options

Option 1:

Site: Rose Garden / Keenan Cemetery

- Address: 2580 Valley View Lane
- Parcel Area: 2.5 acres
- Available Area: 1.59 acres
- Unplatted Property
- Parking: 36 spaces

Surrounding Uses		
Direction	Use	Zoning
East	School/Church	Planned Development-PD-86
West	Rose Garden	Planned Development-PD-86
North	Residential Right of way	R-4 Valleyview Lane
South	Keenan Cemetery	Planned Development-PD-86





Option 2:

Site: Historical Park

- Address: 2526 Farmers Branch Lane
- Parcel Area: 8.64 acres
- Available Area: 0.54 acres
- Unplatted Property
- Parking: 63 spaces (Shared with Historical Park)

Surrounding Uses		
Direction	Use	Zoning
East	Historical Park	Planned Development-PD-36
West	Historical Park	Historical Park Parking lot
North	Residential	Planned Development-PD-36
South	Historical Park	Planned Development-PD-36



Site





Option 3:

Site 3: Farmers Branch Park – TBC

- Address: 13899 Dennis Road
- Parcel Area: 13.7 acres
- Available Area: 1.99 acres
- Unplatted Property
- Parking: 39 spaces shared with The Branch Connection.

Surrounding Uses		
Direction	Use	Zoning
East	School/Church Residential	I-RU (Religious Use)/ R-6
West	Local Retail	Planned Development-PD-3/LR-2
North	Local Retail Branch Connection	Planned Development-PD-3/LR-2
South	Local Retail	Planned Development-PD-3/LR-1





Comparison Table

Site Option	Total Acres	Available Area	Parking	Expansion Potential
Rose Garden - Keenan Cemetery	2.5	1.59 acres	Shared	Possible
Historical Park- Dodson House	8.64 acres	0.54 acres	Shared	Limited
Farmers Branch Park - TBC	13.7 acres	1.99 acres	Shared with TBC	Limited

Conclusion:

The proposed sites already have existing uses, which vary but are not specifically designed for memorial-type gathering spaces. Each location is part of a larger parcel, so a dedicated area will need to be designed to create the plaza.

The current Liberty Plaza occupies approximately 4 acres, whereas the proposed sites offer smaller available areas. However, all options are conveniently located near restrooms, ensuring visitors have access to facilities.

Additional considerations include the cost of relocating and reinstalling existing amenities, as well as potential enhancements such as adding a reflection pond or incorporating more detailed features within the park.