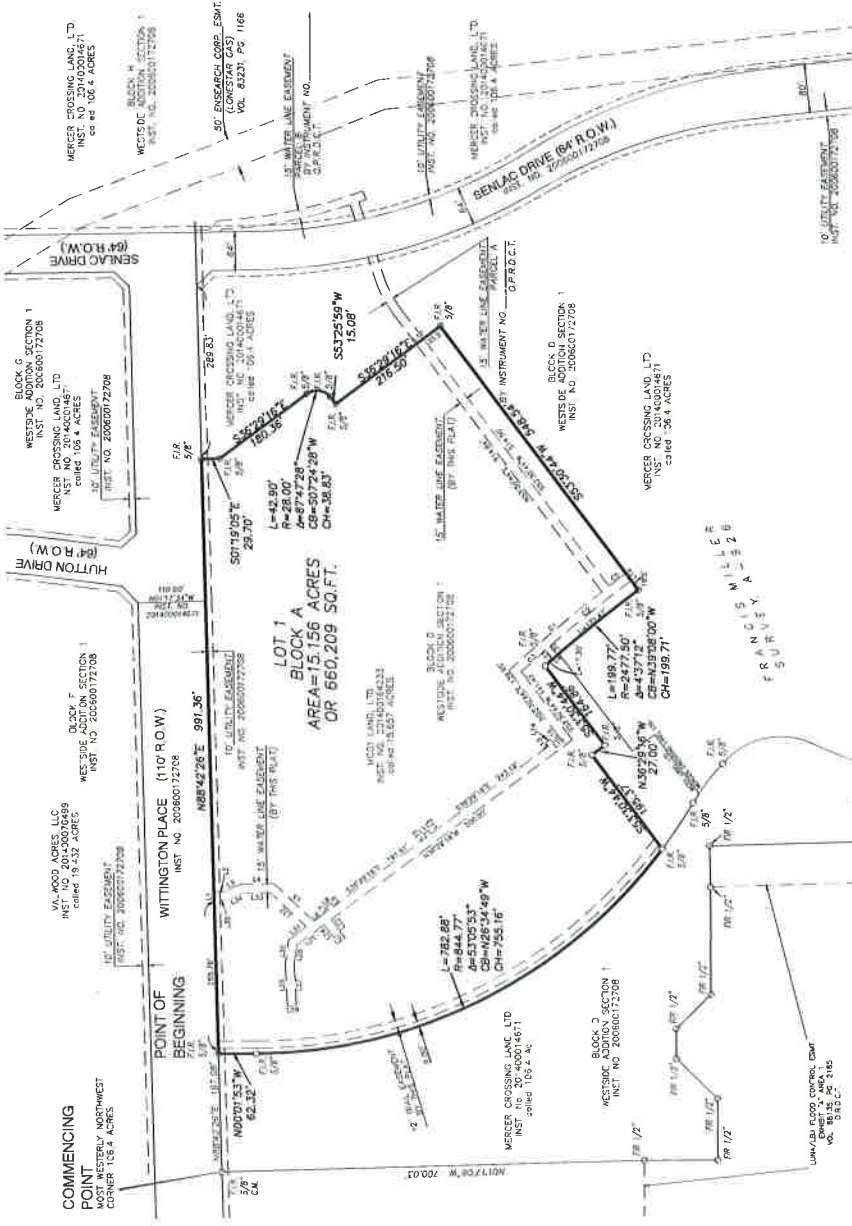


BASIS OF BEGINNING:
DEED TO MERCER CROSSING LAND, LTD.
INST. NO. 207400014671

CURVE	BEARING	ARC LENGTH	CHORD	BEARING
C1	S 87.02° E	133.52	113.36	S 87.02° E
C2	S 87.02° E	133.52	113.36	S 87.02° E
C3	S 87.02° E	133.52	113.36	S 87.02° E
C4	S 87.02° E	133.52	113.36	S 87.02° E
C5	S 87.02° E	133.52	113.36	S 87.02° E

LINE	BEARING	DISTANCE
1	S 87.02° E	133.52
2	N 11.22° E	1.62
3	S 87.02° E	133.52
4	N 11.22° E	1.62
5	S 87.02° E	133.52
6	N 11.22° E	1.62
7	S 87.02° E	133.52
8	N 11.22° E	1.62
9	S 87.02° E	133.52
10	N 11.22° E	1.62
11	S 87.02° E	133.52
12	N 11.22° E	1.62
13	S 87.02° E	133.52
14	N 11.22° E	1.62
15	S 87.02° E	133.52
16	N 11.22° E	1.62
17	S 87.02° E	133.52
18	N 11.22° E	1.62
19	S 87.02° E	133.52
20	N 11.22° E	1.62
21	S 87.02° E	133.52
22	N 11.22° E	1.62
23	S 87.02° E	133.52
24	N 11.22° E	1.62
25	S 87.02° E	133.52
26	N 11.22° E	1.62
27	S 87.02° E	133.52
28	N 11.22° E	1.62
29	S 87.02° E	133.52
30	N 11.22° E	1.62
31	S 87.02° E	133.52
32	N 11.22° E	1.62
33	S 87.02° E	133.52
34	N 11.22° E	1.62
35	S 87.02° E	133.52
36	N 11.22° E	1.62
37	S 87.02° E	133.52
38	N 11.22° E	1.62
39	S 87.02° E	133.52
40	N 11.22° E	1.62
41	S 87.02° E	133.52
42	N 11.22° E	1.62
43	S 87.02° E	133.52
44	N 11.22° E	1.62
45	S 87.02° E	133.52
46	N 11.22° E	1.62
47	S 87.02° E	133.52
48	N 11.22° E	1.62
49	S 87.02° E	133.52
50	N 11.22° E	1.62



FINAL PLAT

MBP WEST

LOT 1, BLOCK A

(15,156 ACRES OR 660,209 SQUARE FEET)

BEING A REPLAT OF
PART OF BLOCK D OF WESTSIDE ADDITION SECTION 1
RECORD NO. 206860172708
SITUATED IN THE CITY OF FRISCO, DALLAS COUNTY, TEXAS
SITUATED IN THE FRANCIS MILLER SURVEY, ABSTRACT NO. 926

Owner:
BASELINE consulting engineers
Contact: Kyle A. Berman, P.E.
180 Grayney Blvd, Suite 103
Richardson, Texas 75080
(972) 442-2400 Fax (972) 442-7417
Firm Registration #0199975

Surveyed by:
Binkley & Barfield CAP
Contact: Kyle A. Berman, P.E.
180 Grayney Blvd, Suite 103
Richardson, Texas 75080
(972) 442-2400 Fax (972) 442-7417
Firm Registration #0199975

Scale: 1" = 100'

Flood Note: The subject tract is located completely in zone "A" as defined by Flood Insurance Rate Map Community Panel No. 1722-Build, Flood Zone 15A. The Federal Emergency Management Agency Zone "X" is defined on this map as an area of special flood hazard (100 year flood). Said area is further defined as having flood depths of from 1 to 5 feet (usually areas of ponding). Base flood elevation determined as 430 feet by said map.

LEGEND
CW = CONTROL MONUMENT
FR 1/2" = FOUND FROM ROD W/CARTER BURGES CAP
FR 5/8" = FOUND FROM ROD W/BASELINE CAP CAP

