



CITY OF  
**FARMERS BRANCH**  
TEXAS

Our mission at the City of Farmers Branch is to build a vibrant, dynamic community that consistently seeks to improve the quality of life for our residents.



Library Visits  
141,946  14%

Circulation  
198,572  15%

New Borrowers  
1,659  7%

# Farmers Branch Manske Library

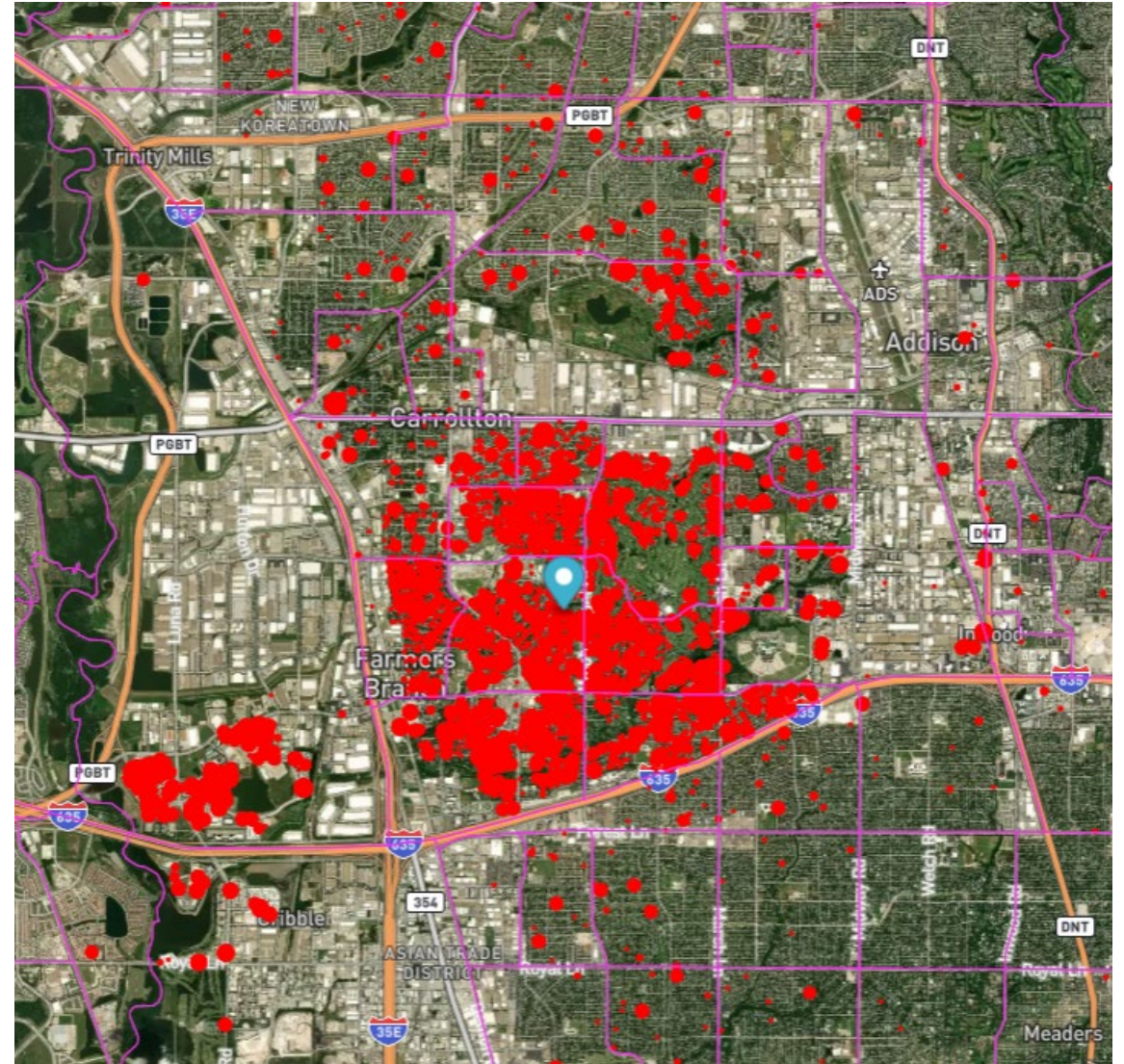
## Advisory Board

Annual Update | November 12, 2024



# Library Users

- Out of 14,061 registered library users, 70% or 9,854 live in Farmers Branch.
- 23% of registered users live in Carrollton but are restricted from using the library's online services.
- 7% of registered users are TexShare residents with limited access. Their card allows them to borrow only 5 library items at a time. (A State program allowing members of other Texas Libraries access to a limited membership at 500 Texas libraries)



Library System and Services. (2024, September 30). *Library Patron Map*. LibraryIQ.



Die Cut



Cricut Vinyl Cutter



Glowforge Laser Cutter  
Reservations Available



3D Printer  
Reservations Available

# Innovation Zone

Opened June 1<sup>st</sup>

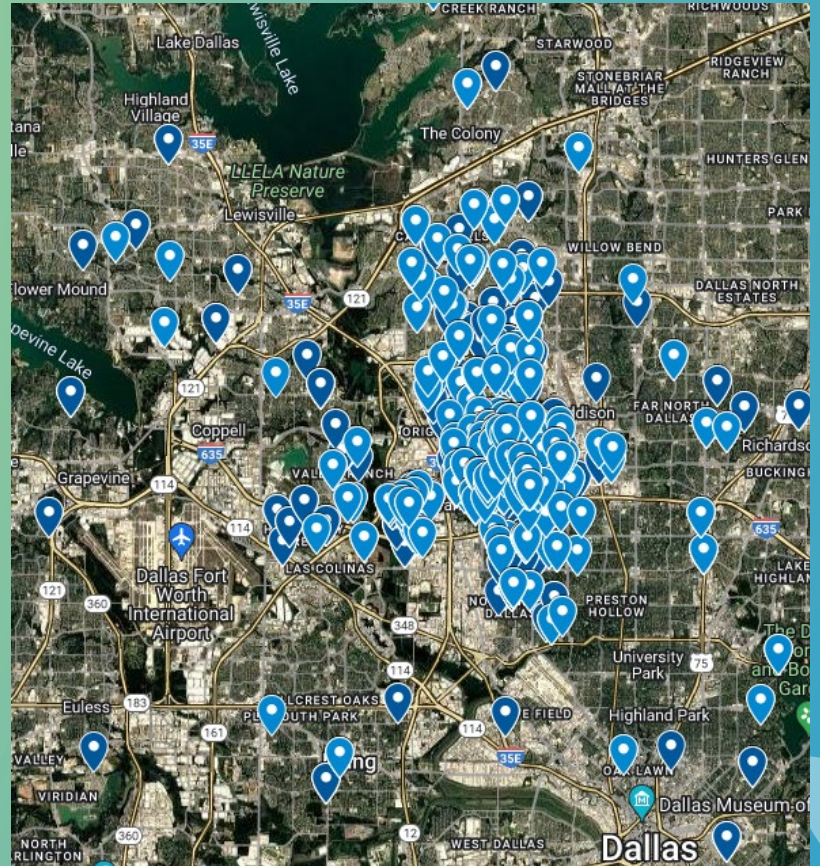
Innovate at home by checking out:

- Mini 3D Printers
- Dash Robots
- Sewing Machines
- Snap Circuits
- Kinderbots
- Fishing Rods
- Gardening Kits
- More on the way



Sewing/Quilting  
Machine





**Library Programs**

---

**Program Attendance 14,021**

CB04 - Supporting the evolution of the arts, culture, and recreation in Farmers Branch.



# Upcoming at the Library

## Changes

### Library Hours Starting December 2<sup>nd</sup>

- **Sunday** 1 PM – 5 PM
- **Monday** 10 AM – 8 PM
- **Tuesday** 10 AM – 8 PM
- **Wednesday** 10 AM – 8 PM
- **Thursday** 10 AM – 8 PM
- **Friday** 10 AM – 6 PM
- **Saturday** 10 AM – 6 PM

## Programs

**Jolabokaflod Book Drive  
For Dallas Medical Center**

**Santa & Cookies**

**Comical Reaction Improv Workshop**

**2<sup>nd</sup> Annual Tiny Art Show**

**Mad Science: Fire & Ice**

# Questions?