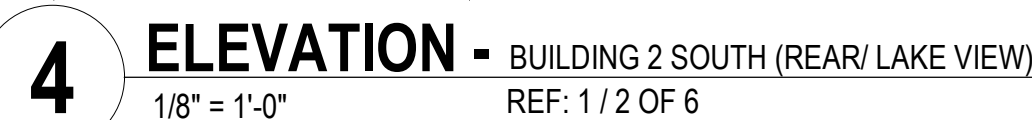




BLDG 1 - NORTH - FAÇADE CALCULATIONS		
BUILDING FAÇADE	MATERIAL AREA	% OF TOTAL
TOTAL BUILDING FAÇADE	3,297 SF	100%
LESS FENESTRATION / GLASS	621 SF	19%
TOTAL SOLID SURFACE (Brick, Stone Veneer, Precast Stone, Metal Cornice)	2,676 SF	81%

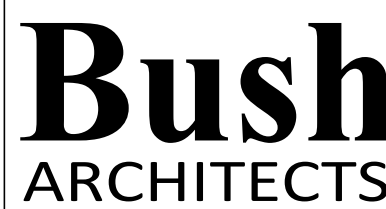




BLDG 2 - NORTH - FAÇADE CALCULATIONS		
BUILDING FAÇADE	MATERIAL AREA	% OF TOTAL
TOTAL BUILDING FAÇADE	3,087 SF	100%
LESS FENESTRATION / GLASS	770 SF	25%
TOTAL SOLID SURFACE (Brick, Stone Veneer, Precast Stone, Metal Cornice))	2,317 SF	75%

[illegible]

-635 FARMERS BRANCH, TX. 75234



3 OF 6

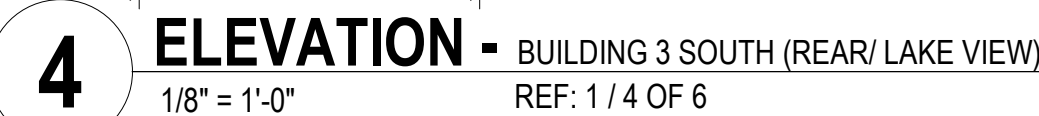
SCALE:
As indicated

DRAWN BY
FK

CHECKED BY
JB

DATE:
11 -07 -2019

SHEET:
3 OF 6



BLDG 3 - NORTH - FAÇADE CALCULATIONS		
BUILDING FAÇADE	MATERIAL AREA	% OF TOTAL
TOTAL BUILDING FAÇADE	3,100 SF	100%
LESS FENESTRATION / GLASS	475 SF	16%
TOTAL SOLID SURFACE (Brick, Stone Veneer, Precast Stone, Metal Cornice)	2,625 SF	84%

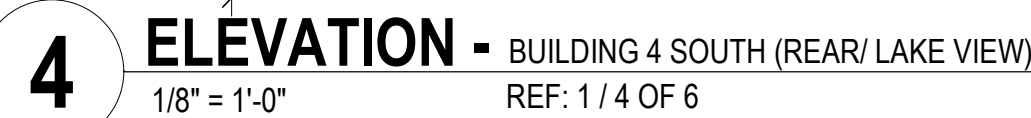


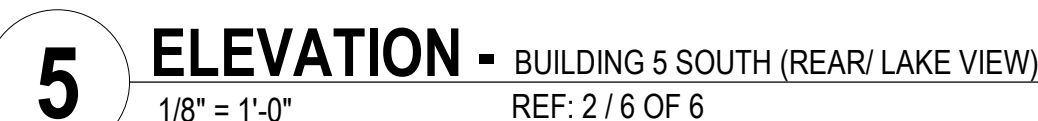
COPYRIGHT, BUSH ARCHITECTS, LLC. - 2019



BLDG 4 - SOUTH - FAÇADE CALCULATIONS		
BUILDING FAÇADE	MATERIAL AREA	% OF TOTAL
TOTAL BUILDING FAÇADE	2,935 SF	100%
LESS FENESTRATION / GLASS	642 SF	22%
TOTAL SOLID SURFACE (Brick, Stone Veneer, Precast Stone, Metal Cornice)	2,293 SF	78%

BLDG 4 - NORTH - FAÇADE CALCULATIONS		
BUILDING FAÇADE	MATERIAL AREA	% OF TOTAL
TOTAL BUILDING FAÇADE	3,144 SF	100%
LESS FENESTRATION / GLASS	611 SF	20%
TOTAL SOLID SURFACE (Brick, Stone Veneer, Precast Stone, Metal Cornice)	2,533 SF	80%





BLDG 5 - NORTH - FAÇADE CALCULATIONS		
BUILDING FAÇADE	MATERIAL AREA	% OF TOTAL
TOTAL BUILDING FAÇADE	1,479 SF	100%
LESS FENESTRATION / GLASS	362 SF	24%
TOTAL SOLID SURFACE (Brick, Stone Veneer, Precast Stone, Metal Cornice)	1,117 SF	76%

