



Tree Preservation

City Council
Study Session
August 2, 2022

Background

- Staff worked on a proposed Tree Preservation Ordinance during 2019 – 2020
- Proposed tree ordinance was part of a larger Landscape Regulations update of the CZO
- Process was derailed due to COVID-19 pandemic and staff changes



Tree Preservation

- Goal of the tree preservation ordinance is to encourage protection of the existing mature trees along the street space and maintain City's character – “*City in a Park*”.
- Current CZO direction:
 - *4.1.E.1.f - All landscaping shall be maintained in a living growing condition. Any landscaping that is removed must be replaced with the same or comparable species and caliper plant, as when it was originally installed.*
- DFW Cities with various forms of tree preservation policies include Carrollton, Colleyville, Coppell, Garland, Grapevine, Irving, Mesquite, Plano



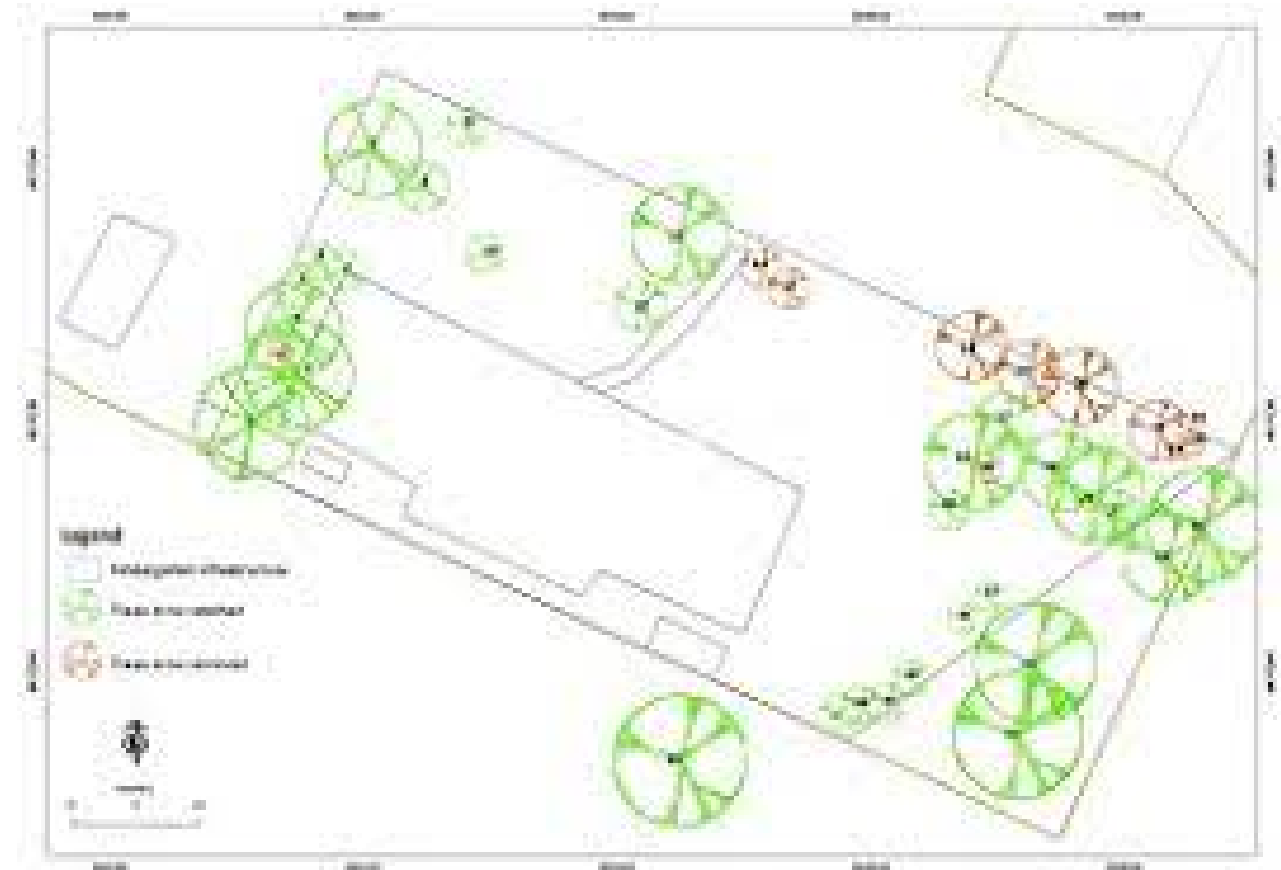
Tools for Tree Preservation

- Requires CZO amendment
- The following tools could be covered by a CZO amendment
 1. Tree survey
 2. Preservation Requirements
 3. Tree Replacement Options
 4. Landscape Tree Credit
 5. Tree Removal Permit



Tree Survey

- Tree survey is used to identify existing trees on a site (location, species, size and health of trees)
- Prepared by a professional
 - Land surveyor
 - Arborist
 - Landscape architect



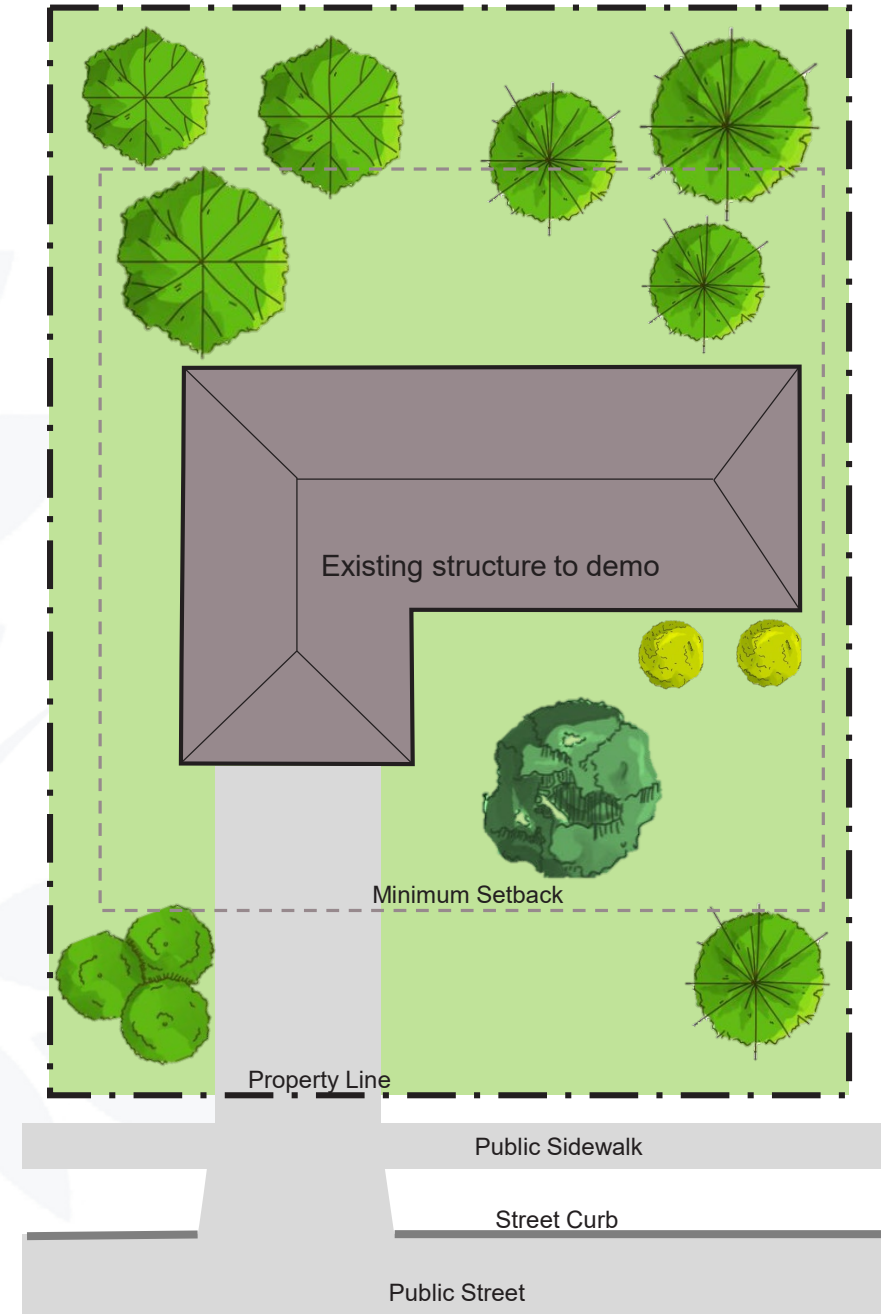
Preservation Standards

- **How to define protected trees:**

- Protected and non protected species
- Size of existing tree to be considered protected
- Zoning districts where trees would be protected
- Would define the tree preservation area – i.e. not necessarily the whole lot

- **Non protected species:**

Common Name	Scientific Name
Hackberry	<i>Celtis occidentalis</i>
Cottonwood	<i>Populus</i>
Mimosa	<i>Mimosa pudica</i>
Mesquite	<i>Prosopis glandulosa</i>
Bois d’Arc	<i>Maclura pomifera</i>
Chinaberry	<i>Melia azedarach</i>
Soapberry	<i>Sapindus</i>
Tree of Heaven	<i>Ailanthus altissima</i>



Protected Tree Replacement Options

- When removal or replacement of a protected tree is necessary, mitigation of the removal may be met by two options.

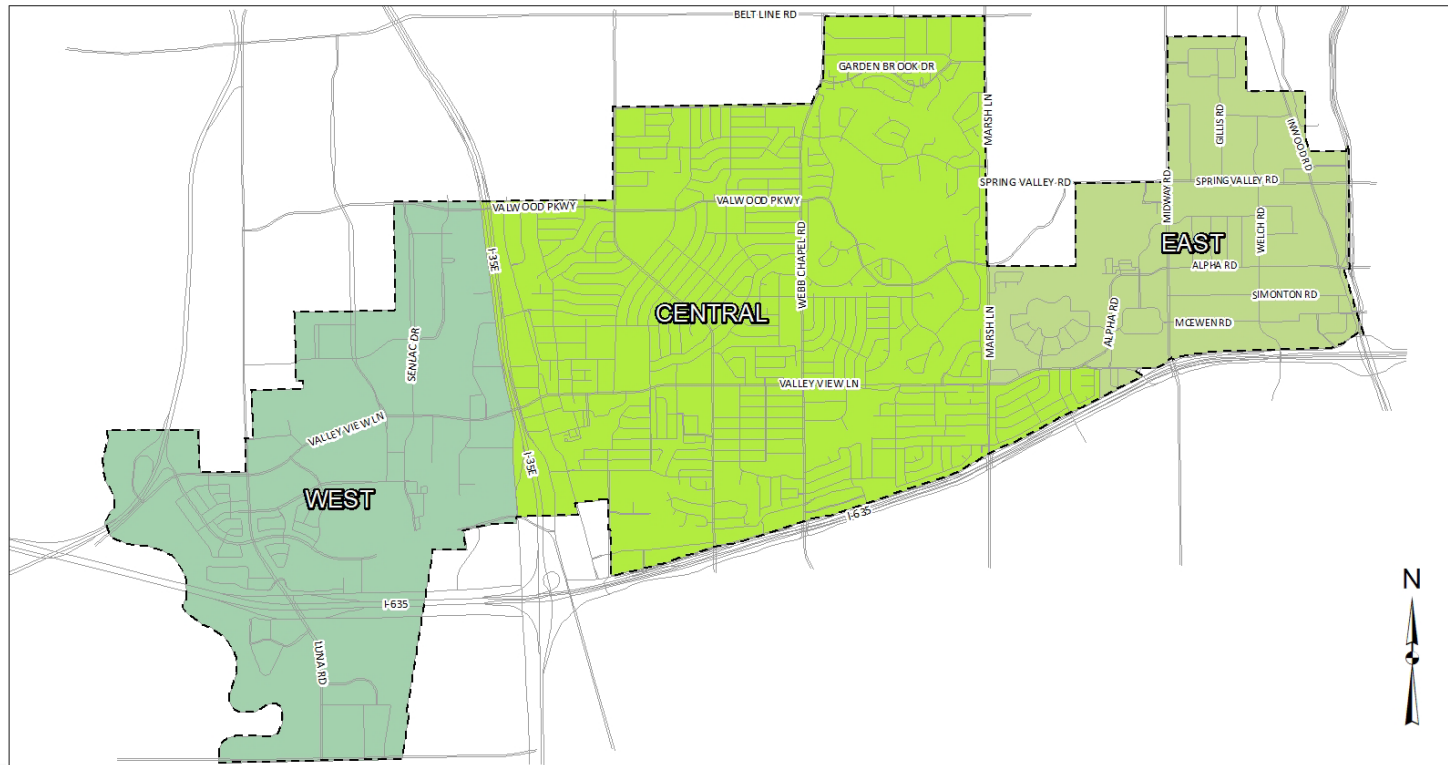
1. Replacement Tree

- Same or similar species and same type of tree (shade tree or ornamental)
- Must be planted on the same property in which the protected tree was removed or alternative location by written agreement and approved by City Manager

2. Payment of fee in lieu of replacement tree

- When replanting of a tree is not possible, payment can be made into the Urban Reforestation Fund
 - Property with **existing one-family dwelling and two-family dwelling**:
 - 10 inches or greater
 - **All other properties**:
 - 6 inches or more
- Fees for replacement would be based on labor and tree cost

Urban Reforestation Fund



Fees will be for **planting trees along public streets, city parks or other public open spaces** in the same tree zone where trees are originally removed.



Direction / Next Steps

Direction:

Would Council like to consider a tree preservation ordinance?

Next Steps (if direction is provided):

- Draft a proposed tree preservation ordinance
- Bring the draft tree preservation ordinance to P&Z for review
- Bring the draft tree preservation ordinance to Council for review
- Make changes as necessary
- Bring the proposed ordinance forward to P&Z and Council for public hearings and formal consideration

Discussion

Question or comments?