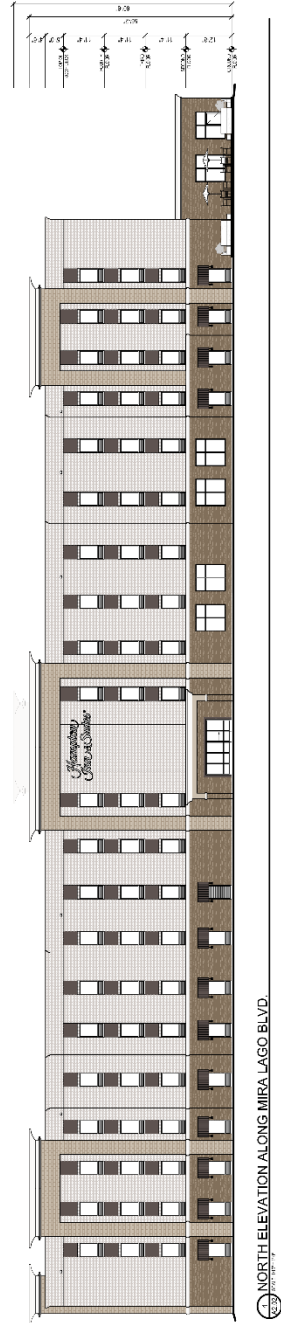
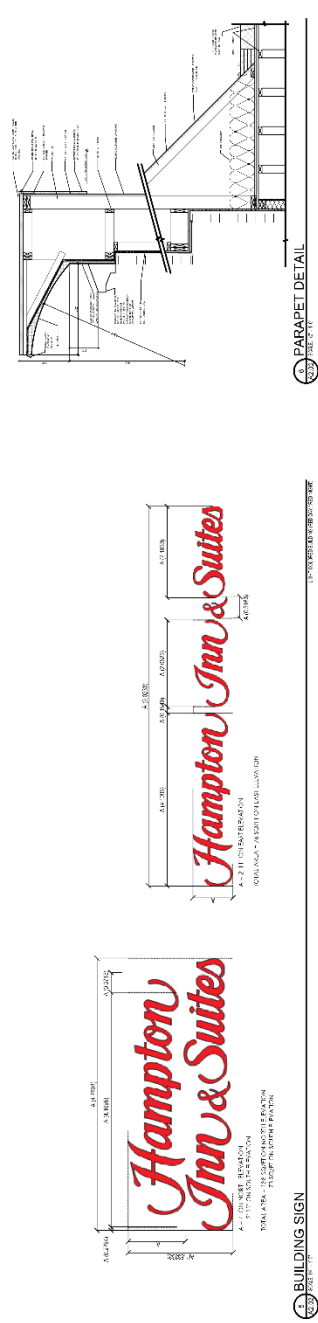









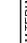


Elevations and Renderings



COLOR & FINISH LEGEND	
	BASE MATERIAL 1: STONE
	MATERIAL 2: BRICK
	MATERIAL 3: BRICK
	MATERIAL 4: STUCCO #1
	MATERIAL 5: STUCCO #2
	BENJAMIN MOORE 2114-9 BITTERSWEET CHOCOLATE
	METAL LOUVERS
	PAINTED PEW - B&W BEIGEZE
	GLAZING
	BENJAMIN MOORE #44 CRYSTAL GRAY ON GLASS

MATERIAL PERCENTAGES
NORTH ELEVATION TOTAL AREA 16,834 SF

1	— TONEMATCHING 2001 SF 12.5%
2	— BRICK 55,23 SF 37.1%
3	— ST-CCO 13,44 SF 1.3%
4	— CONCRETE & JOINT SYSTEM 5,940 SF 35.1%

MATERIAL PERCENTAGES
WEST ELEVATION: TOTAL AREA 421'4 SF

①	—	STONE MASONRY	CONC. 15%
②	—	BRICK	2501 SF, 9.1%
③	—	GLAZED	587 SF, 13.9%
④	—	OPENING & 3-ZONE SYSTEM	

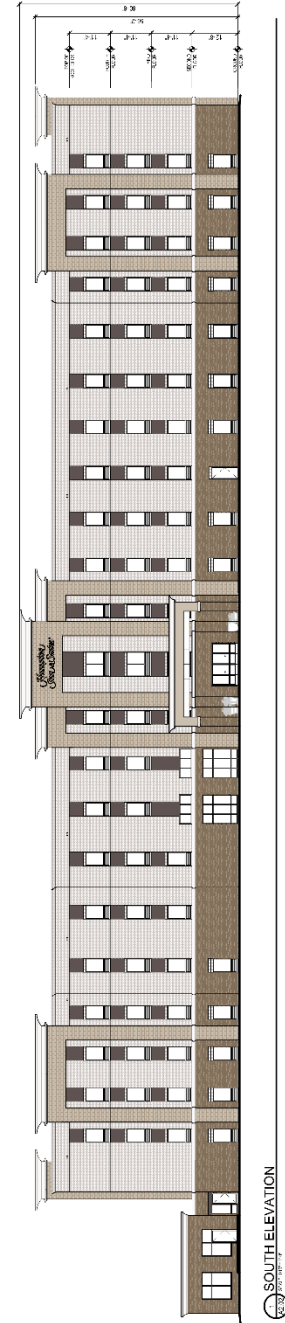
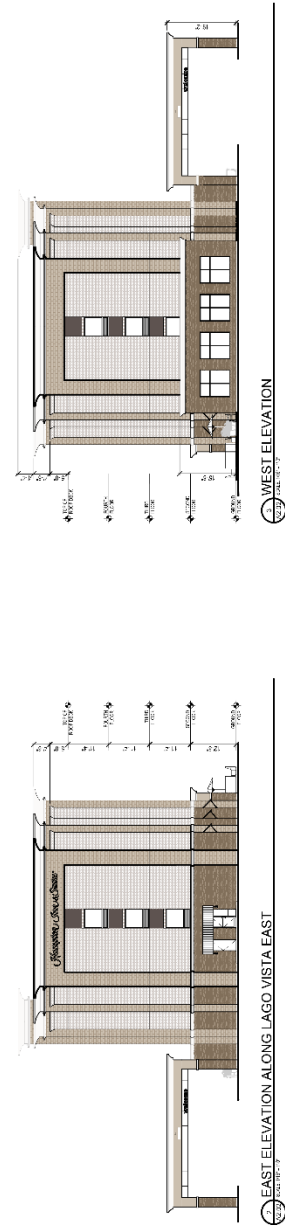
MATERIAL PERCENTAGES
EAST ELEVATION: TOTAL AREA 4214 SF

①	— STONEMASK® 67.5 SF, 1.6%
②	— BRICK 2758 SF, 65.1%
③	— STUCCO 456 SF, 10.8%
④	— ORIENTAL SLATE 344 SF, 8.1%

MATERIAL PERCENTAGES

SOUTH ELEVATION; TOTAL AREA 10,813 SF

1	—	TOTAL MASONRY	27% SF, 10.5%
2	—	WILDS	5-40 SF, 5.2%
3	—	STUCCO	78.7 SF, 1.5%
4	—	OPEN LOG & SASH SYSTEM	249.3 SF, 2.3%





1 NORTH - EAST CORNER VIEW
12-23 12-23



3 EAST ENTRANCE VIEW
12-23 12-23



1 NORTH STREET VIEW
12-23 12-23



2 NORTH - WEST CORNER VIEW
12-23 12-23



2 WEST ENTRANCE VIEW
12-23 12-23



1 SOUTH VIEW
12-23 12-23