

LEWISVILLE

COPPELL

CARROLLTON

ADDISON

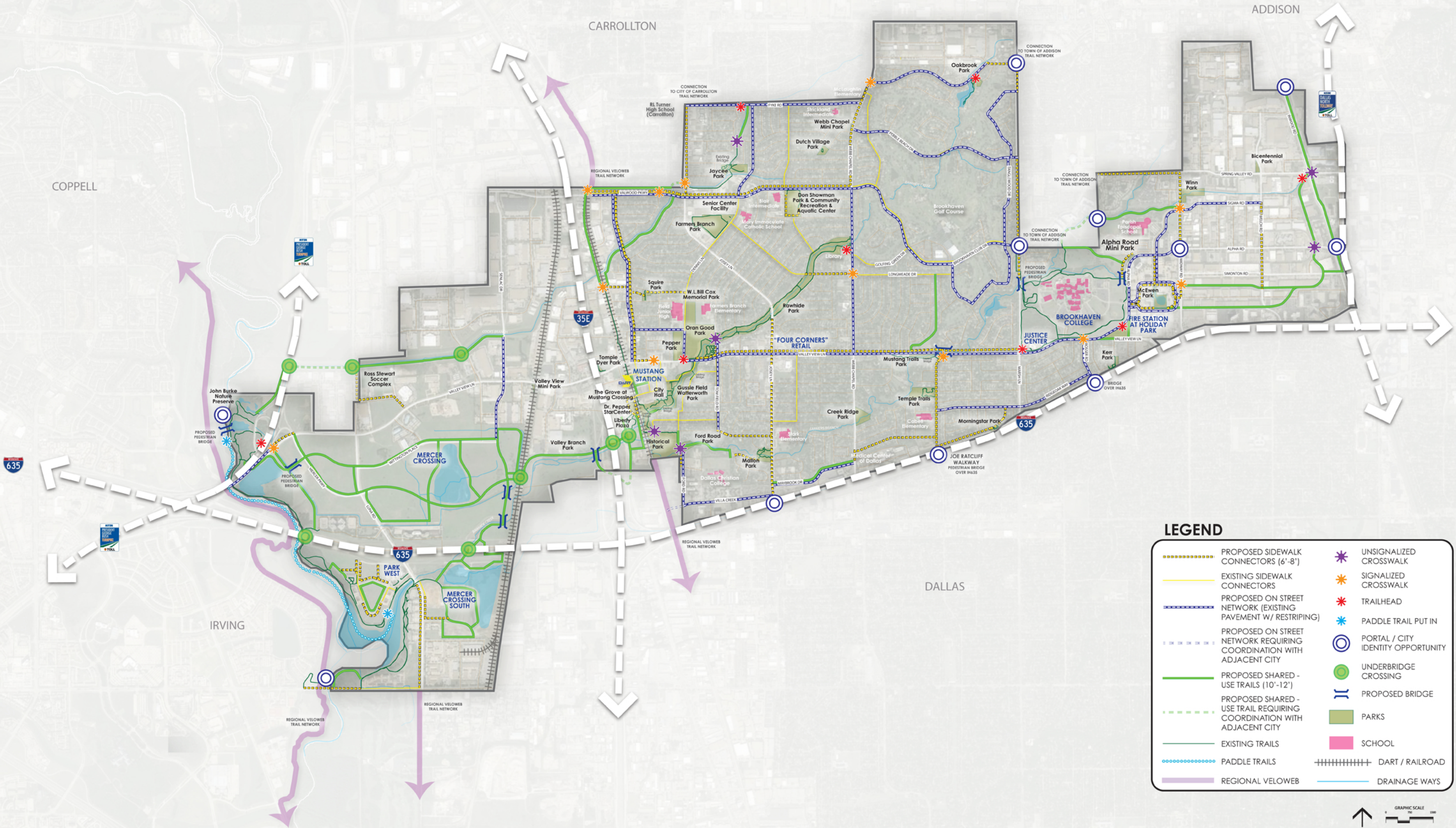
DALLAS

IRVING



FARMERS
BRANCH

DUNAWAY



LEGEND

- | | |
|---|------------------------------------|
| PROPOSED SIDEWALK CONNECTORS (6'-8') | UNSIGNALIZED CROSSWALK |
| EXISTING SIDEWALK CONNECTORS | SIGNALIZED CROSSWALK |
| PROPOSED ON STREET NETWORK (EXISTING PAVEMENT W/ RESTRIPING) | TRAILHEAD |
| PROPOSED ON STREET NETWORK REQUIRING COORDINATION WITH ADJACENT CITY | PADDLE TRAIL PUT IN |
| PROPOSED SHARED - USE TRAILS (10'-12') | PORTAL / CITY IDENTITY OPPORTUNITY |
| PROPOSED SHARED - USE TRAIL REQUIRING COORDINATION WITH ADJACENT CITY | UNDERBRIDGE CROSSING |
| EXISTING TRAILS | PROPOSED BRIDGE |
| PADDLE TRAILS | PARKS |
| REGIONAL VELOWEB | SCHOOL |
| | DART / RAILROAD |
| | DRAINAGE WAYS |



CITYWIDE TRAIL
MASTER PLAN

SEPTEMBER 1, 2015