



On Street Parking

2017 UPDATE (AUGUST 15, 2017)

Current Regulations

- ▶ Resolution 2010-079 (Dec. 2010)
- ▶ Established a procedure allowing a petition, signed by at least 60% of the residents of a street segment, to request parking restrictions.
- ▶ Ordinance 3253 (Dec. 2013)
- ▶ Established an ordinance allowing the Public Works Director, upon direction of the City Council, to implement certain parking actions.

Resolution No. 2010-079 (Dec 2010)

- ▶ 1. Prohibition of on-street parking on both sides of a street segment.
 - ▶ 2. Prohibition of on-street parking on one side of a street segment.
 - ▶ 3. On-street parking prohibitions that create alternating on-street parking area along one or both sides of a street segment.
 - ▶ 4. One-way designations.
-
- ▶ Street segment: generally defined as one block from one street intersection to an adjacent street intersection.

Resolution No.2010-079 (cont.)

- ▶ Petition Process:
- ▶ Any resident can initiate on a street in which they reside.
- ▶ Obtain “Neighborhood Parking Policy Petition”.
- ▶ Neighborhoods responsibility to obtain the minimum 60% concurrence. (100% concurrence required when one or more non-residential properties occur within a segment)

Ordinance 3253 (Dec. 2013)

- ▶ 1. Prohibit parking on one or both sides of the public street.
- ▶ 2. Prohibit continuous parking of a motor vehicle on the street for more than 48 hours.
- ▶ 3. Restrict parking to residents and require vehicle parking permits.
- ▶ 4. Restrict number of vehicles per household that may be parked on the public street.
- ▶ 5. Prohibit parking of motor vehicles overnight or during certain posted hours.
- ▶ 6. Limit the number of vehicles that may be parked or stored on, or contiguous to a residential lot to less than five(5) vehicles.

Statistics

- ▶ Most municipalities on street parking regulations result from **chronic non-resident** parking. Such as residential neighborhoods being adjacent to popular entertainment venues, sporting events, shopping areas and universities.
- ▶ Only two cases (Damascus and portion of Heartside) submitted for Neighborhood Parking Management Petition Policy. Only Damascus met the 60% threshold and has “No Parking” signs installed for the first 225 feet from Webb Chapel moving East. (Damascus 39 lots, 66% yes parking problem/34% no parking problem. Heartside 34 lots, 71% no parking problem/29% yes parking problem)

Considerations

- ▶ Are the on street parking issues due to:
 - the size of the vehicles?
 - The number of vehicles?
- ▶ Are the areas with higher levels of on-street parking due to:
 - non-resident parking?
 - Resident parking?
- ▶ Is the 60% threshold too low considering the potential impact to the entire street segment?

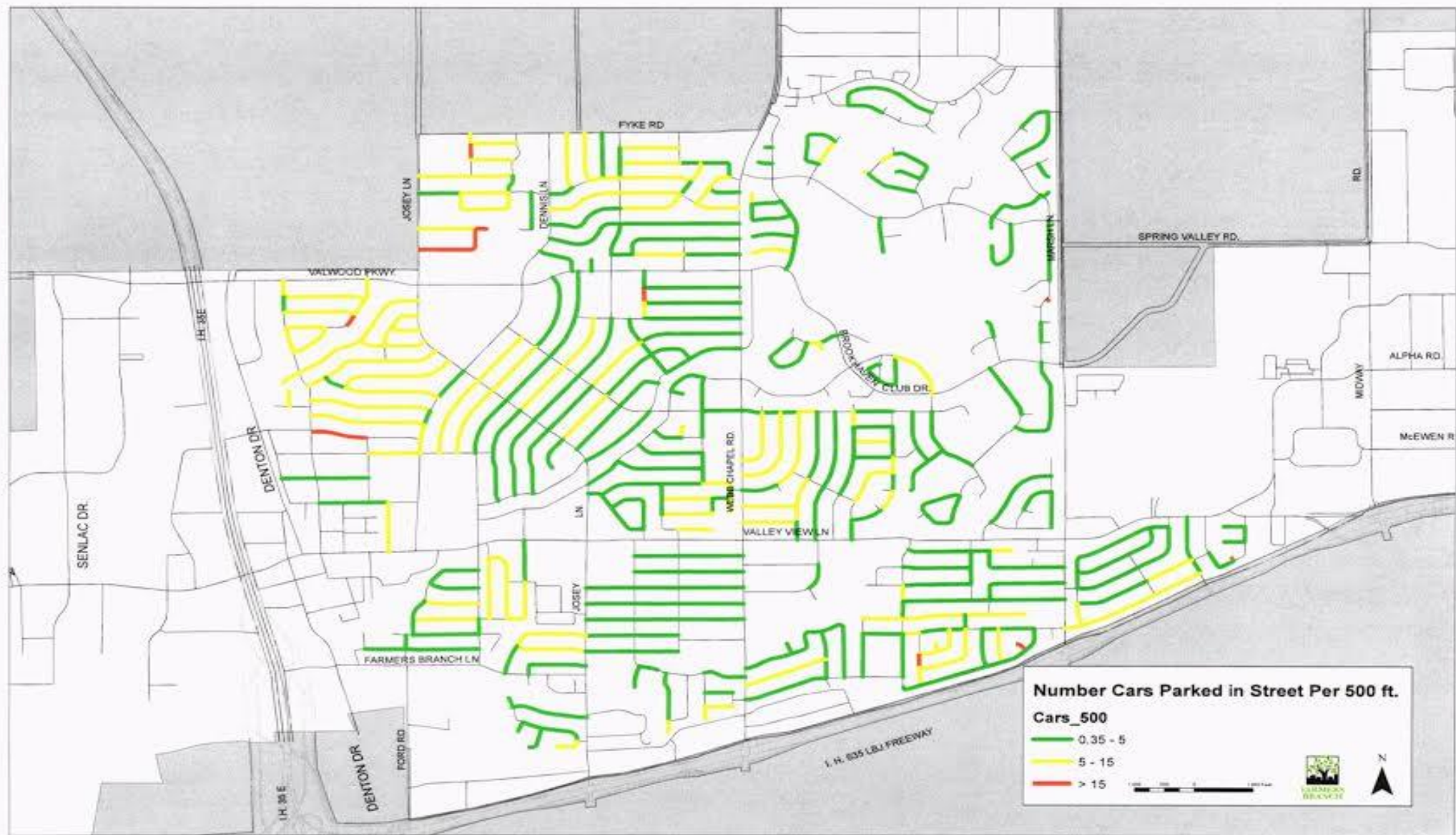
Recommendations

Less complex - lower cost

- ▶ 1. Take no action – current policy/procedure in place is not being utilized.
- ▶ 2. Prohibiting parking on one or both sides of the street.
- ▶ 3. Limiting number of vehicles parked on/contiguous to a property to < 5. All ready limit vehicles via Code of Ordinances to 5.

More complex - higher cost

- ▶ 1. Prohibit continuous parking of vehicles on the street for no more than 48 hours. PD handles on complaint basis and beat patrols.
- ▶ 2. Limiting number of vehicles per household or prohibiting vehicles parked overnight during certain hours.
- ▶ 3. Restricting street parking by creating parking permit system.





Questions, Comments or
Direction

Common vehicle classes

Propose to move from traditional nameplate nomenclature to Gross Vehicle Weight Rating (gvwr)



TRUCK CLASSIFICATIONS

CLASS 1 6,000 lbs or less



MINIVAN



CARGO VAN



SUV



PICKUP TRUCK

CLASS 2 6,001 to 10,000 lbs



MINIVAN



CARGO VAN



FULL-SIZE PICKUP



STEP VAN

CLASS 3 10,001 to 14,000 lbs



WALK-IN



BOX TRUCK



CITY DELIVERY



HEAVY-DUTY PICKUP

CLASS 4 14,001 to 16,000 lbs



LARGE WALK-IN



BOX TRUCK



CITY DELIVERY

CLASS 5 16,001 to 19,500 lbs



BUCKET TRUCK



LARGE WALK-IN



CITY DELIVERY

CLASS 6 19,501 to 26,000 lbs



BEVERAGE TRUCK



SINGLE-AXLE



SCHOOL BUS



RACK TRUCK

CLASS 7 26,001 to 33,000 lbs



REFUSE



FURNITURE



CITY TRANSIT BUS



TRUCK TRACTOR

CLASS 8 33,001 to REALLY HUGE



CEMENT TRUCK



TRUCK TRACTOR



DUMP TRUCK



SLEEPER CAB