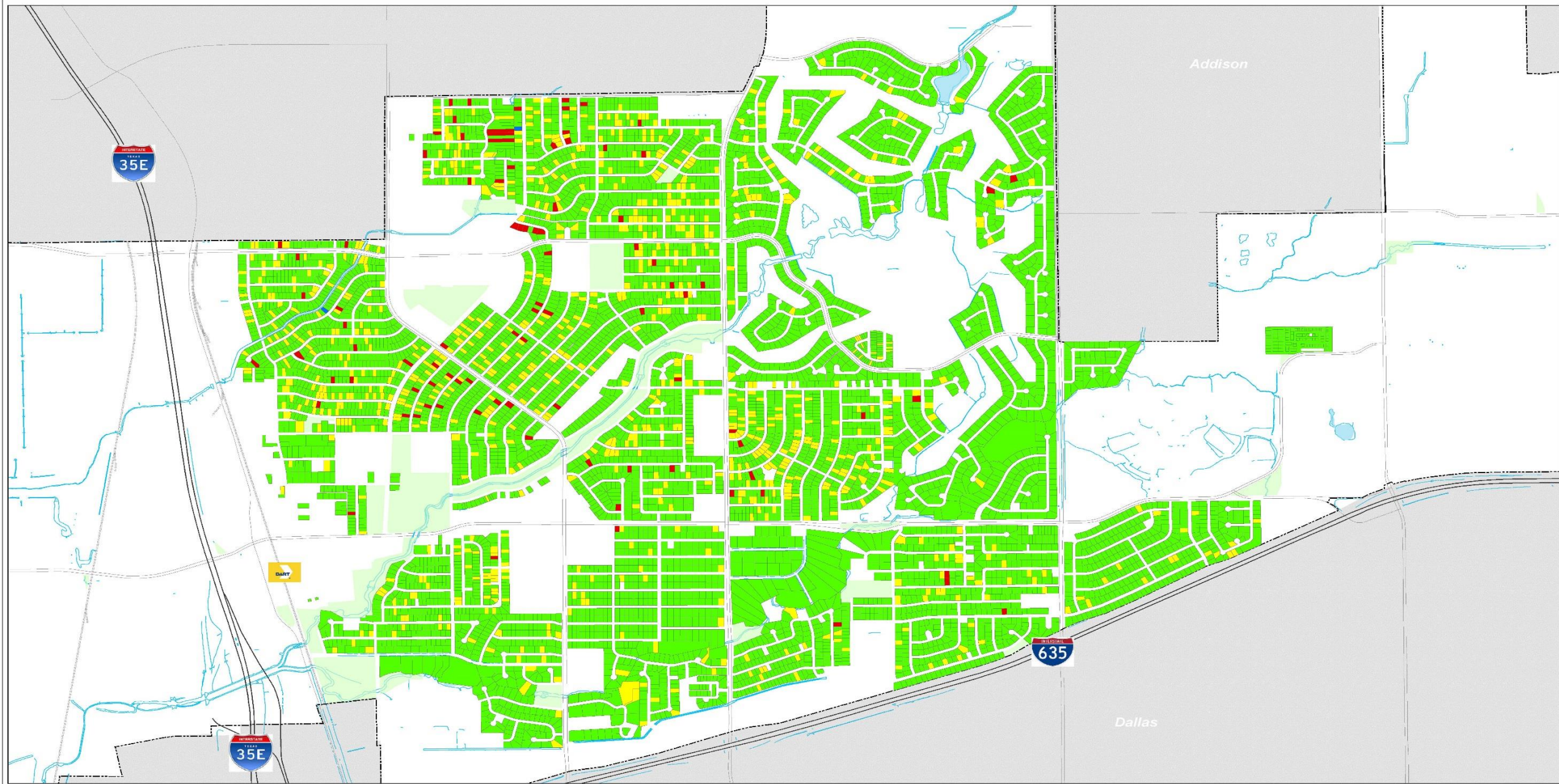


Property Conditions Survey

January 9th 2018

Property Condition Survey metrics

- ▶ **Green** - Adequate exterior weather protection such as no deterioration to roof, exterior surfaces, trim, cornice or eaves, siding, windows or window screens.
- ▶ **Yellow** - Slight deterioration in exterior weather protection such as a few broken or missing pieces of siding, some deterioration of trim, cornice or eaves, cracked windows or torn window screens, loose roof shingles and slight waves in roof line.
- ▶ **Red** - Inadequate exterior weather protection such as 25% or more exterior surfaces need paint or repair, missing roof shingles, broken windows or missing glass, 25% or more deteriorated trim, cornice or eaves and obvious waves or dips in roofline.
- ▶ **Blue** - Dilapidated and/or uninhabitable.



- Good (6,325)
- Minor Repair (886)
- Major Repair (91)
- Dilapidated (2)



0 2,500 5,000 Feet

Property Condition Survey Main Buildings - Finalized August 16, 2017

This product is for informational purposes only and may not have been prepared for or be suitable for legal, engineering, or surveying purposes. It does not represent an on-the-ground survey and represents only the approximate relative location of property boundaries. Texas HB1147, Effective 9/1/2011

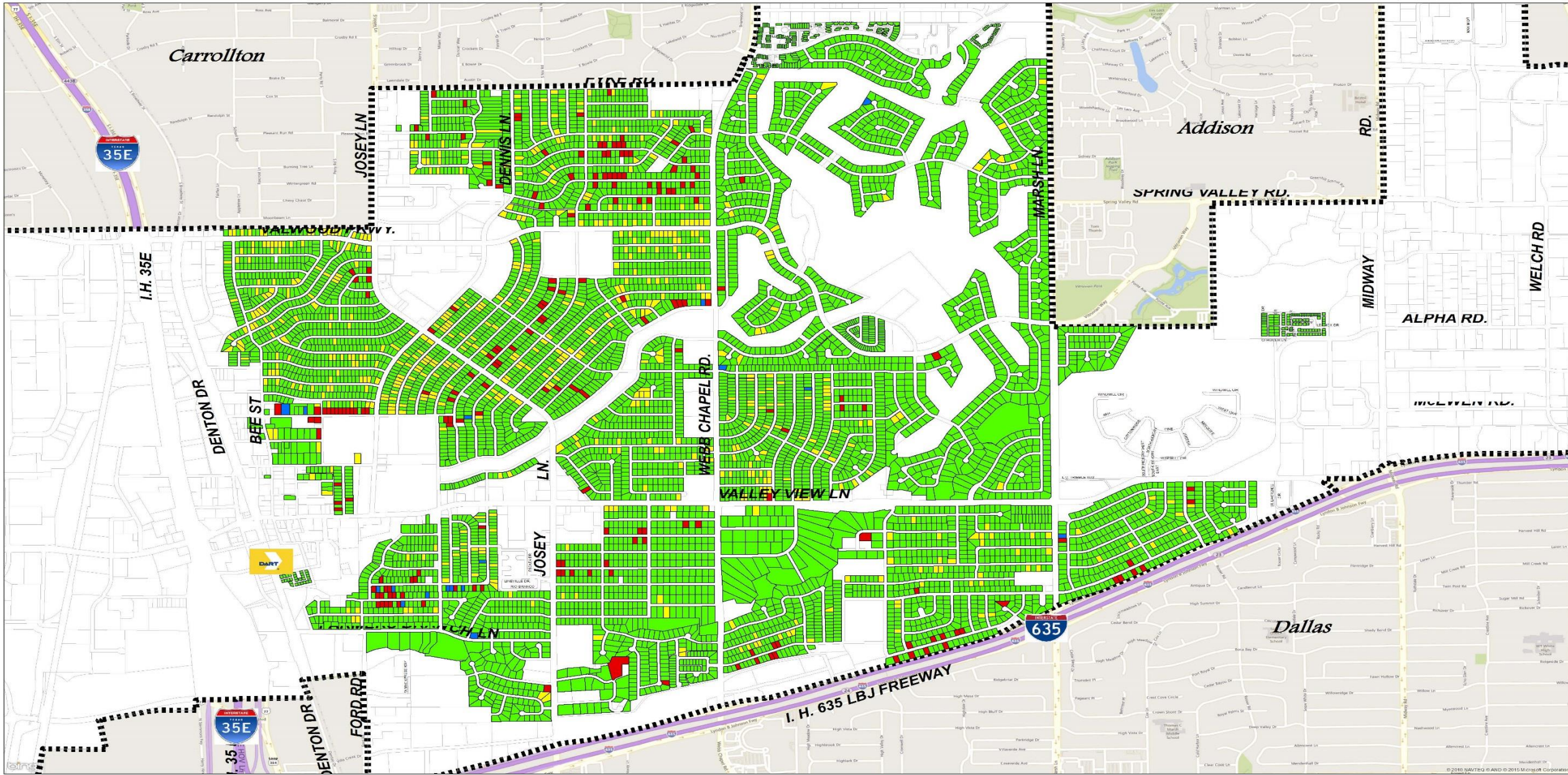
Property Conditions Survey statistics

2017 Results (consultant)

- ❑ 87% (6325) of the lots were graded as “good”
- ❑ 12% (886) of the lots were in need of “minor repair”
- ❑ 1% (91) of the lots were in need of “major repair”
- ❑ A very minor percentage .03% (2) of the lots were considered “dilapidated”

2015 Results (staff)

- ❑ 89% (6852) of the lots were graded as “good”
- ❑ 8% (584) of the lots were in need of “minor repair”
- ❑ 3% (195) of the lots were in need of “major repair”
- ❑ A very minor percentage .2% (17) of the lots were considered “dilapidated”



- Good.....6,852 Properties
- Minor Repair.....584 Properties
- Major Repair.....195 Properties
- Dilapidated.....17 Properties

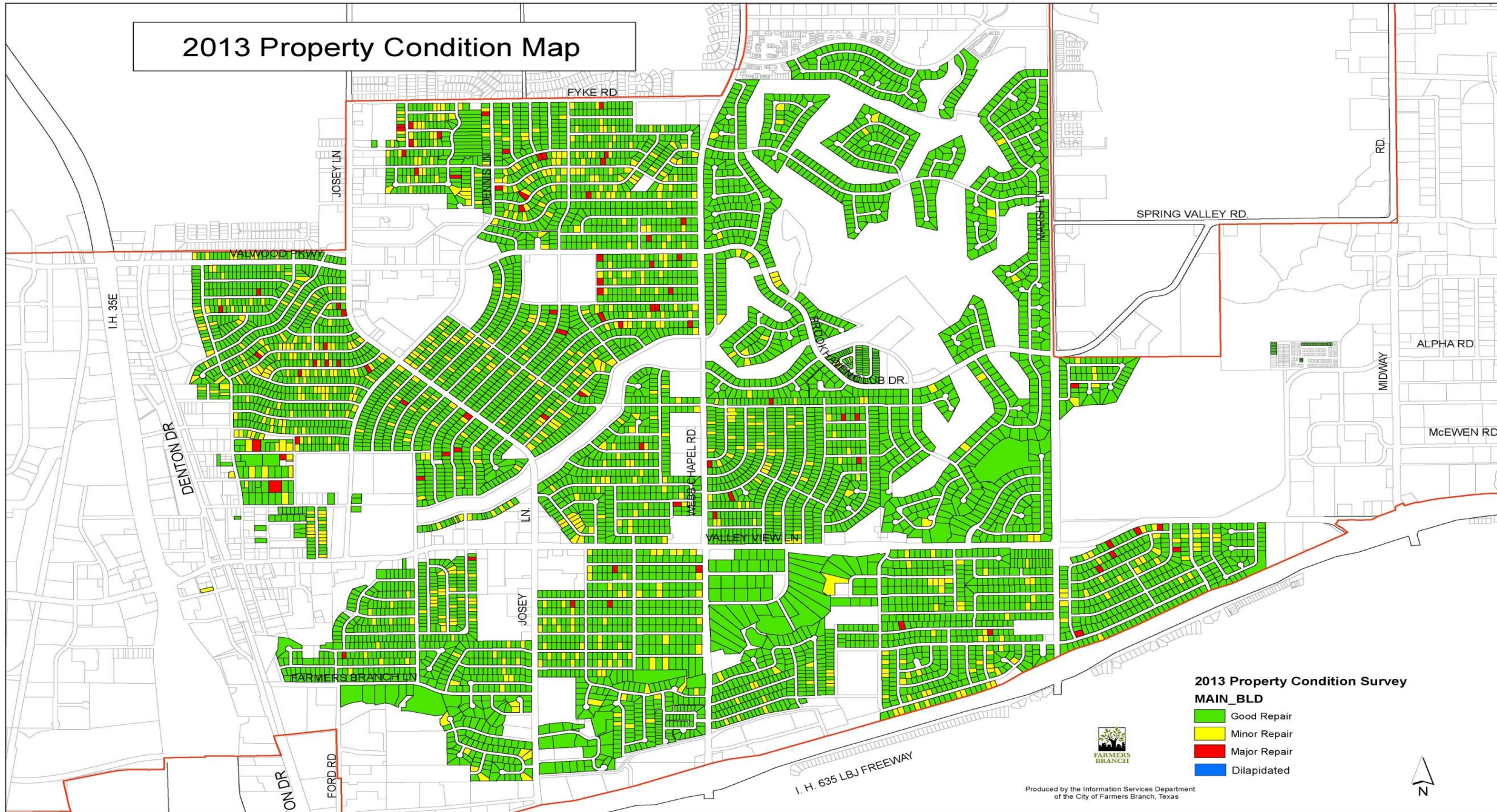
2015 Residential Property Condition Survey



Various official and unofficial sources were used to gather this information. Every effort was made to ensure the accuracy of this data, however, no guarantee is given or implied as to the accuracy of said data. For pictorial reference only.



2013 Property Condition Map



Why perform the Property Conditions Survey?

- ▶ Benchmarking
- ▶ Roadmap for deploying code enforcement resources
- ▶ Quantitative data for staff and City Council
- ▶ Could be used to target future re-development activities

The background features abstract, overlapping geometric shapes in various shades of blue, ranging from light sky blue to deep navy blue. These shapes are primarily located on the left and right sides of the frame, creating a modern, dynamic feel. The central area is a plain, light grayish-white, providing a clean backdrop for the text.

Questions / comments