

01 SITE PLAN  
SCALE: 1" = 30'-0"

| SITE INFORMATION                                |  |
|---|--|
| TOTAL AREA OF SITE                              | 2.45 acres = 106,722 s.f.                                      |
| TOTAL FLOOR AREA RATIO (Hotel + Parking garage) | 40.3%  |
| TOTAL IMPERVIOUS COVER IN SQUARE FEET           | 72,837 s.f.  |
| PERCENTAGE OF SITE COVERED BY IMPERVIOUS COVER  | 68%  |
| TOTAL BUILDING COVER                            | 43059 s.f.<br>Hotel: 18,830 s.f. + Parking garage: 24,228 s.f. |

| BUILDING INFORMATION                      |             |                |
|---|-------------|----------------|
| NUMBER OF STORIES                         | Hotel       | Parking garage |
|   | 4 story     | 2 story        |
| HEIGHT OF BUILDING                        | 60'-4"      | 32'            |
| FINISHED FLOOR ELEVATION                  | 438.50'     | 438.50'        |
| FOUNDATION TYPE                           | TBD         | TBD            |
| GROSS SQUARE FOOTAGE OF BUILDING BY FLOOR | 1st Floor   | 1st Floor      |
|   | 2nd Floor   | 2nd Floor      |
|   | 3rd Floor   |                |
|   | 4th Floor   |                |
|   | Total       | Total          |
|   | 18,830 s.f. | 24,228 s.f.    |
|   | 17,235 s.f. | 24,228 s.f.    |
|   | 17,235 s.f. |                |
|   | 17,235 s.f. |                |
|   | 70,535 s.f. | 48,456 s.f.    |



PRELIMINARY ISSUE

These documents are issued for interil review only and may not be used for bidding, permit or other construction purposes.

07.27.16

owner  
MIRA LAGO LODGING GROUP LLC  
1234 Nocona Dr  
Irving, Texas 75063  
t. 972.365.9300

architecture  
STUDIO RED DOT  
5307 Mockingbird Ln., Suite 509  
Dallas, TX 75206  
t. 214.379.7427 m. 972.896.7594

civil engineer  
PACHECO KOCH ENGINEERS  
7557 RAMBLER ROAD, Suite 1400  
Dallas, TX 75231  
t. 972.235.3031



project  
HAMPTON INN & SUITES  
Farmers Branch, Texas

The drawings and written material herein constitute original work of the architect, and as intellectual property and instruments of service, are subject to copyright and may not be reproduced, distributed, published or used in any way without the express written consent of the architect.

ISSUE FOR SUP  
revisions

title

SITE PLAN

date 07.27.16

sheet

A1.01

Ordinance No. 3389  
Site Plan

PRELIMINARY ISSUE

These documents are issued for interli review only and may not be used for bidding, permit or other construction purposes.

07.27.16

Ordinance No. 3389  
Elevations

owner  
**MIRA LAGO LODGING GROUP LLC**  
1234 Nocona Dr  
Irving, Texas 75063  
t. 972.365.9300

architecture  
**STUDIO RED DOT**  
5307 Mockingbird Ln., Suite 509  
Dallas, TX 75206  
t. 214.379.7427 m. 972.896.7594

civil engineer  
**PACHECO KOCH ENGINEERS**  
7557 RAMBLER ROAD, Suite 1400  
Dallas, TX 75231  
t. 972.235.3031

*Hampton  
Inn & Suites*

project  
**HAMPTON INN & SUITES**  
Farmers Branch, Texas

The drawings and written material herein constitute original work of the architect, and as intellectual property and instruments of service, are subject to copyright and may not be reproduced, distributed, published or used in any way without the express written consent of the architect.

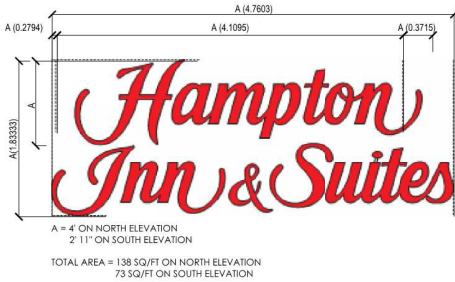
ISSUE FOR SUP  
revisions

title  
**ELEVATIONS**

date 07.27.16

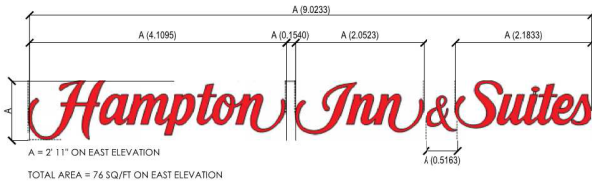
sheet

**A2.02**



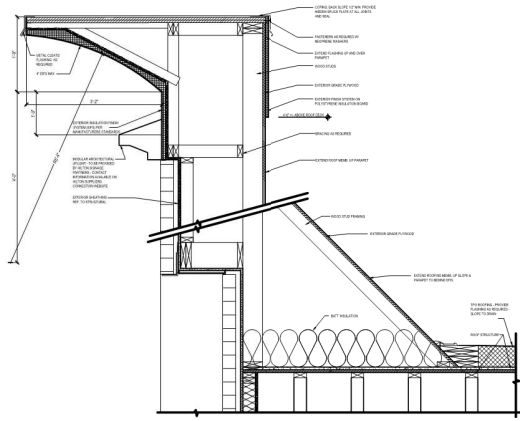
5 BUILDING SIGN

A2.02 SCALE: 1/4" = 1'-0"



6 PARAPET DETAIL

A2.02 SCALE: 1/2" = 1'-0"



4 NORTH ELEVATION ALONG MIRA LAGO BLVD.

A2.02 SCALE: 1/16" = 1'-0"



2 EAST ELEVATION ALONG LAGO VISTA EAST

A2.02 SCALE: 1/16" = 1'-0"



3 WEST ELEVATION

A2.02 SCALE: 1/16" = 1'-0"

COLOR & FINISH LEGEND

|  |  |
|--|--|
|  | BASE MATERIAL 1 : STONE  |
|  | MATERIAL 2: BRICK  |
|  | MATERIAL 3: BRICK  |
|  | MATERIAL 4: STUCCO #1  |
|  | MATERIAL 5: STUCCO #2<br>BENJAMIN MOORE 2114-10<br>BITTERSWEET CHOCOLATE |
|  | METAL LOUVERS -<br>KAWNEER #40 - DARK BRONZE                             |
|  | GLAZING -<br>GUARDIAN SUNGUARD SN -54<br>CRYSTAL GRAY ON CLEAR           |

MATERIAL PERCENTAGES

NORTH ELEVATION: TOTAL AREA 16,834 SF

- 1 - STONE MASONRY  
2849 SF: 16.9%
- 2 - BRICK  
9812 SF: 57.1%
- 3 - STUCCO  
1894 SF: 11.3%
- 4 - OPENING & GLAZING SYSTEM  
2479 SF: 14.7%

MATERIAL PERCENTAGES

WEST ELEVATION: TOTAL AREA 4214 SF

- 1 - STONE MASONRY  
632 SF: 15%
- 2 - BRICK  
2593 SF: 61.5%
- 3 - STUCCO  
567 SF: 13.5%
- 4 - OPENING & GLAZING SYSTEM  
422 SF: 10%

MATERIAL PERCENTAGES

EAST ELEVATION: TOTAL AREA 4214 SF

- 1 - STONE MASONRY  
619 SF: 14.7%
- 2 - BRICK  
2755 SF: 65.3%
- 3 - STUCCO  
608 SF: 14.4%
- 4 - OPENING & GLAZING SYSTEM  
234 SF: 5.6%

MATERIAL PERCENTAGES

SOUTH ELEVATION: TOTAL AREA 16,813 SF

- 1 - STONE MASONRY  
2788 SF: 16.6%
- 2 - BRICK  
9449 SF: 56.2%
- 3 - STUCCO  
2007 SF: 11.9%
- 4 - OPENING & GLAZING SYSTEM  
2569 SF: 15.3%

1 SOUTH ELEVATION

A2.02 SCALE: 1/16" = 1'-0"

