

# Council Update

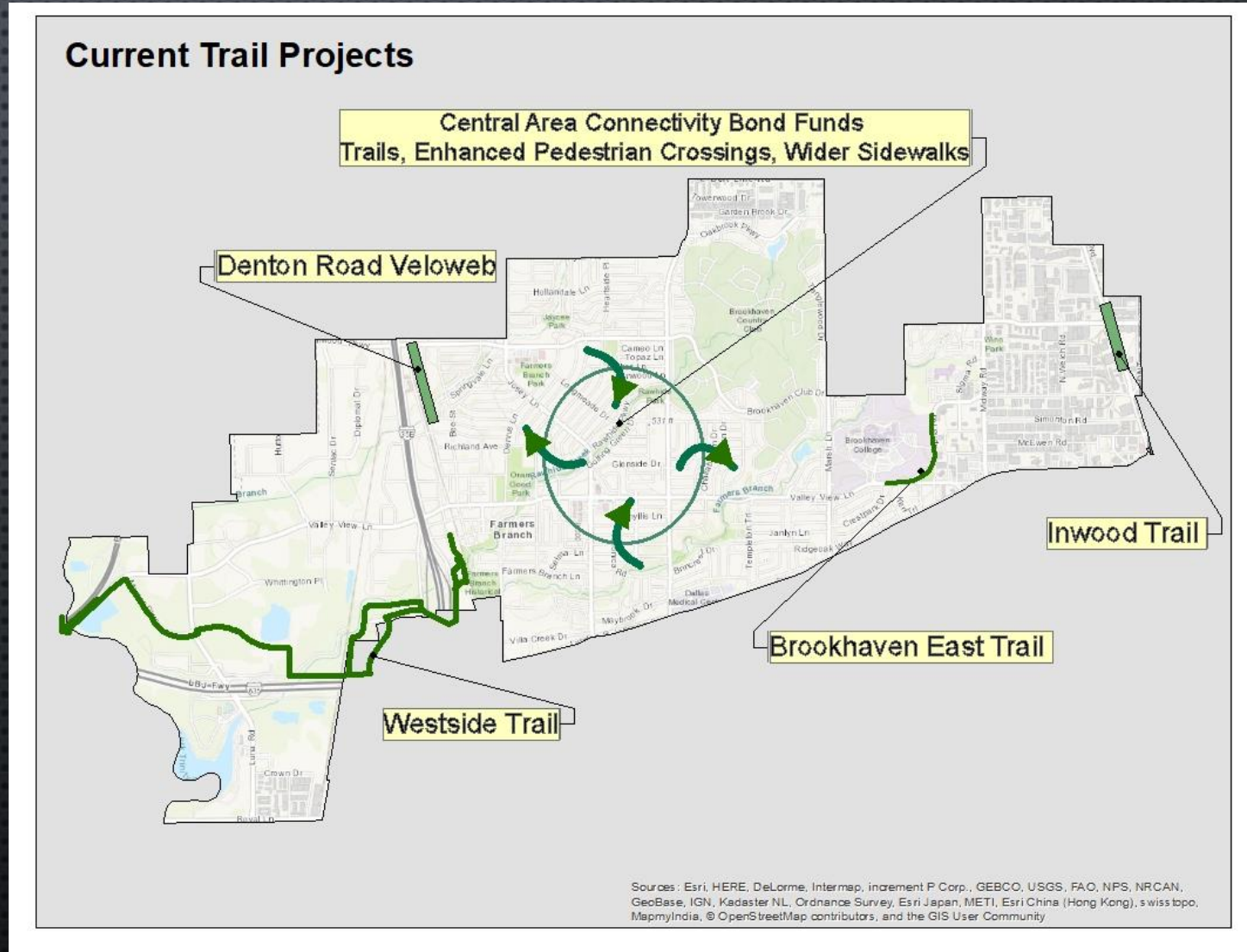
## Westside Art Trails

Sustainability and Public Health  
April 17, 2018



# CURRENT PROJECTS

- WESTSIDE TRAIL
- BROOKHAVEN TRAIL EAST
- CENTRAL AREA CONNECTIONS
- MARSH PEDESTRIAN BRIDGE
- INWOOD URBAN TRAIL
- DENTON ROAD VELOWEB



# Westside Trail

- 2015    Adopted Trail Master Plan
  
- 2016    Funding Agreement - Dallas County - Westside Trail
  - Resolution 2016-044
  - \$3M Funding Agreement – 50/50 match
  - City funds – combination of Hotel/Motel Fund and Non-bond CIP
  
- 2017    LTRA – Westside Trail – Preliminary Design and Alignment
  - Resolution 2017-037
  - Engineering and Survey Services
  - Deliverable: Survey of initial trail alignment
  - Attended (4) Stakeholder Meetings – Westside Trail
  
- 2018    Kimley-Horn and Associates – Westside Trail - Alignment and Design
  - Resolution 2018-07

# CITY AND DALLAS COUNTY TRAIL FUNDS

## CITY TRAIL \$1.5 MILLION

TRAIL, NON-BOND CIP & HOTEL/MOTEL

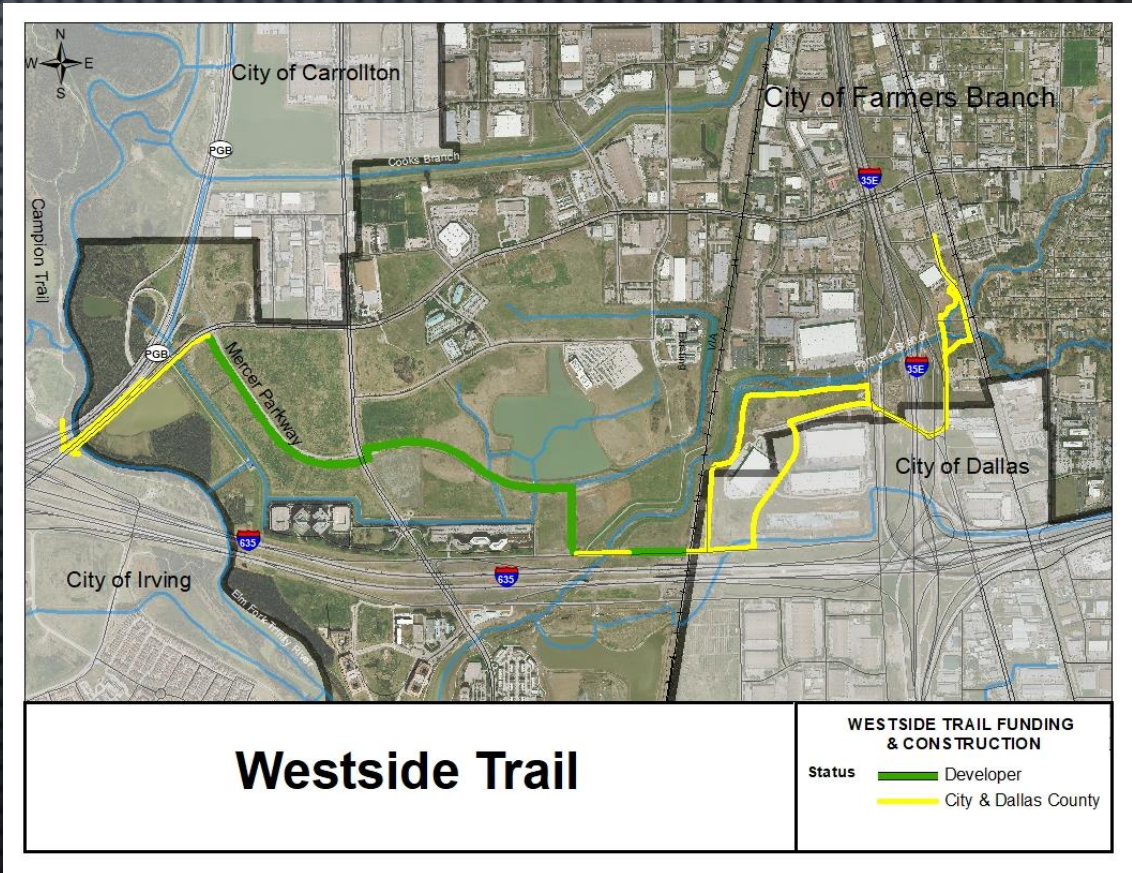
<b>FY 16</b>	<b>\$950,000</b>
<b>FY 18</b>	<b>\$ 50,000</b>
<b>FY 19 TO 23</b>	<b>\$500,000*</b>

\* \$100,000 PER YEAR

CITY TRAIL ART \$550,000 (HOTEL/MOTEL)

## DALLAS COUNTY \$1.5 MILLION

- REIMBURSEMENT UP TO \$1.5 MILLION
- TRAIL DESIGN & CONSTRUCTION COSTS CAN BE SUBMITTED FOR REIMBURSED PER PSA AGREEMENT
- DALLAS CO FUNDS CAN NOT BE USED FOR ART



# WESTSIDE TRAIL STAKEHOLDERS

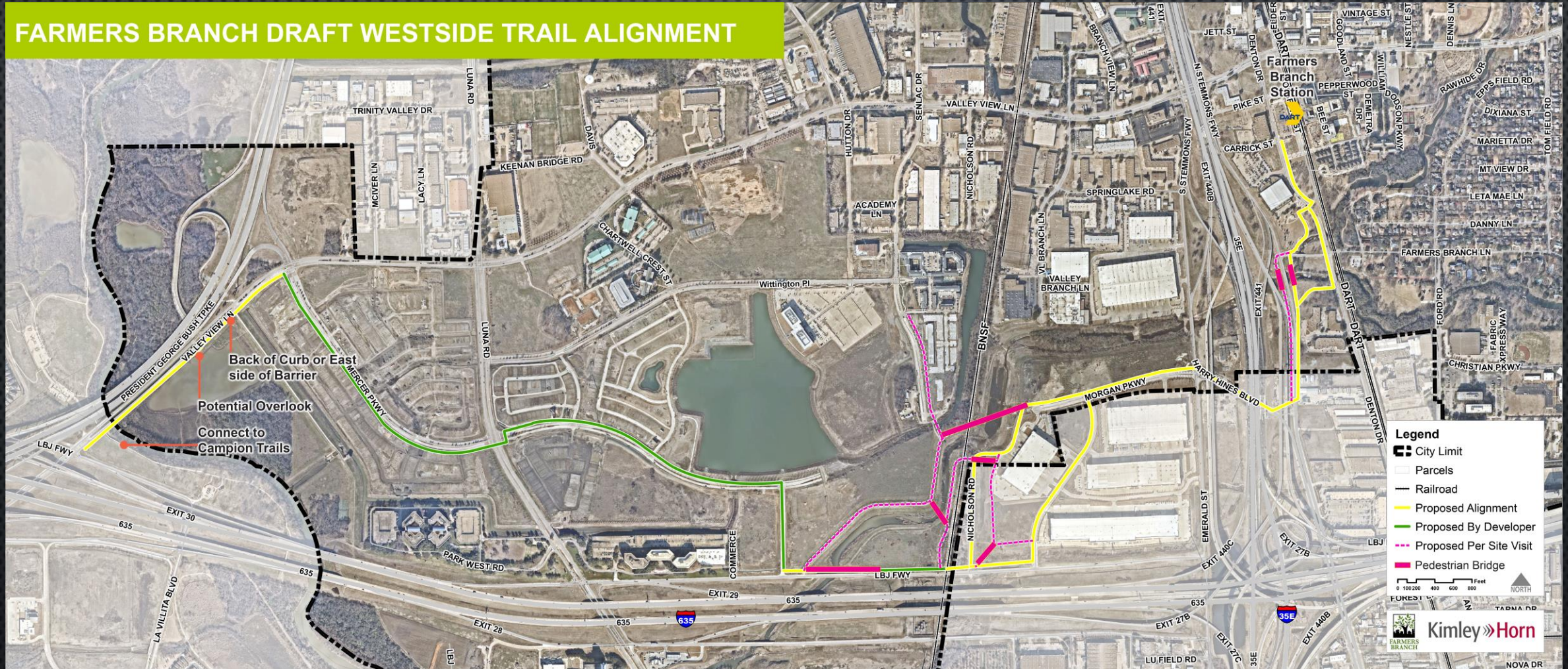
- BURLINGTON NORTHERN SANTA FE RAILROAD (BNSF)
- CITY OF DALLAS TRANSPORTATION AND WATER UTILITIES
- CITY OF IRVING
- DALLAS AREA RAPID TRANSIT (DART)
- DALLAS COUNTY
- NORTH CENTRAL TEXAS COUNCIL OF GOVERNMENTS (NCTCOG)
- NORTH TEXAS TOLLWAY AUTHORITY (NTTA)
- TEXAS DEPARTMENT OF TRANSPORTATION (TXDOT)
- VALWOOD IMPROVEMENT AUTHORITY (VIA)
- PRIVATE LAND OWNERS

# WESTSIDE TRAIL DESIGN UPDATE

- FIRST STAKEHOLDER MEETING COMPLETE
- INITIAL DESIGN AND ROUTING OPTIONS PRESENTED – KEY ISSUES IDENTIFIED WITH STAKEHOLDERS
- FOLLOW UP MEETINGS WITH SPECIFIC STAKEHOLDERS ON KEY ISSUES IN NEXT MONTH
- PROTOTYPICAL ART DESIGN COMPONENTS IN DEVELOPMENT
- INITIAL KEY ART PIECE LOCATIONS IDENTIFIED – ART TBD WITH CITY STAFF
- SECONDARY LAYER OF INTEGRAL ART DESIGN IN DEVELOPMENT

# WESTSIDE TRAIL DESIGN UPDATE

## FARMERS BRANCH DRAFT WESTSIDE TRAIL ALIGNMENT



QUESTIONS