



A

MAIN ENTRY MONUMENT X 1 (D/F)
ALUMINUM PAN SIGN WITH 1" RETURN (SW ELF 42176 COPPER METALLIC) WITH 1/8" ALUMUINUM GRAPHICS (SW 6510 LOYAL BLUE) PIN-MOUNTED TO PAN AND 1/8" ALUMINUM ADDRESS NUMBERS (SW 6510 LOYAL BLUE) PIN MOUNTED TO MONUMENT STRUCTURE. MOUNTS ON STRUCTURE BY OTEHRS.



FOURCE
COMMUNICATIONS

©2018 All ideas, arrangements and plans indicated or represented by these drawings are the property of Fource Communications, Ltd. and were created, evolved and developed for use on and in connection with the specified project. No part of the drawings, designs, arrangements or ideas herein shall be duplicated or used for any purpose whatsoever without the express written consent of Fource Communications, Ltd.

JOB NO.

JPI-816-4S

Jefferson Boardwalk
JPI Realty, Inc.
Farmers Branch, Texas

APPROVAL

Signature

Date
Your signature acknowledges full approval of the design layout and its content, releasing Fource Communications, Ltd. from any responsibility regarding incorrect information and design.

Any colors shown are only representative of actual colors to be used. Final colors will be matched as closely as possible. Colors shown tend to vary due to some materials used in the industry.

DESIGNER INITIALS

SAM

DATE

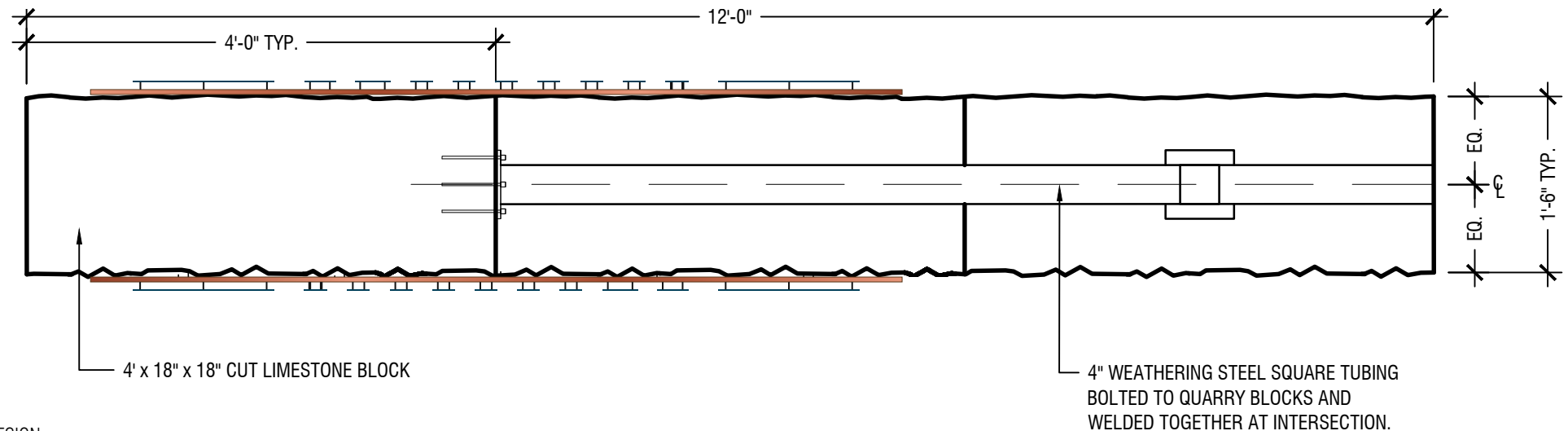
02/01/2017

SHEET TITLE

**EXTERIOR
SIGNAGE**

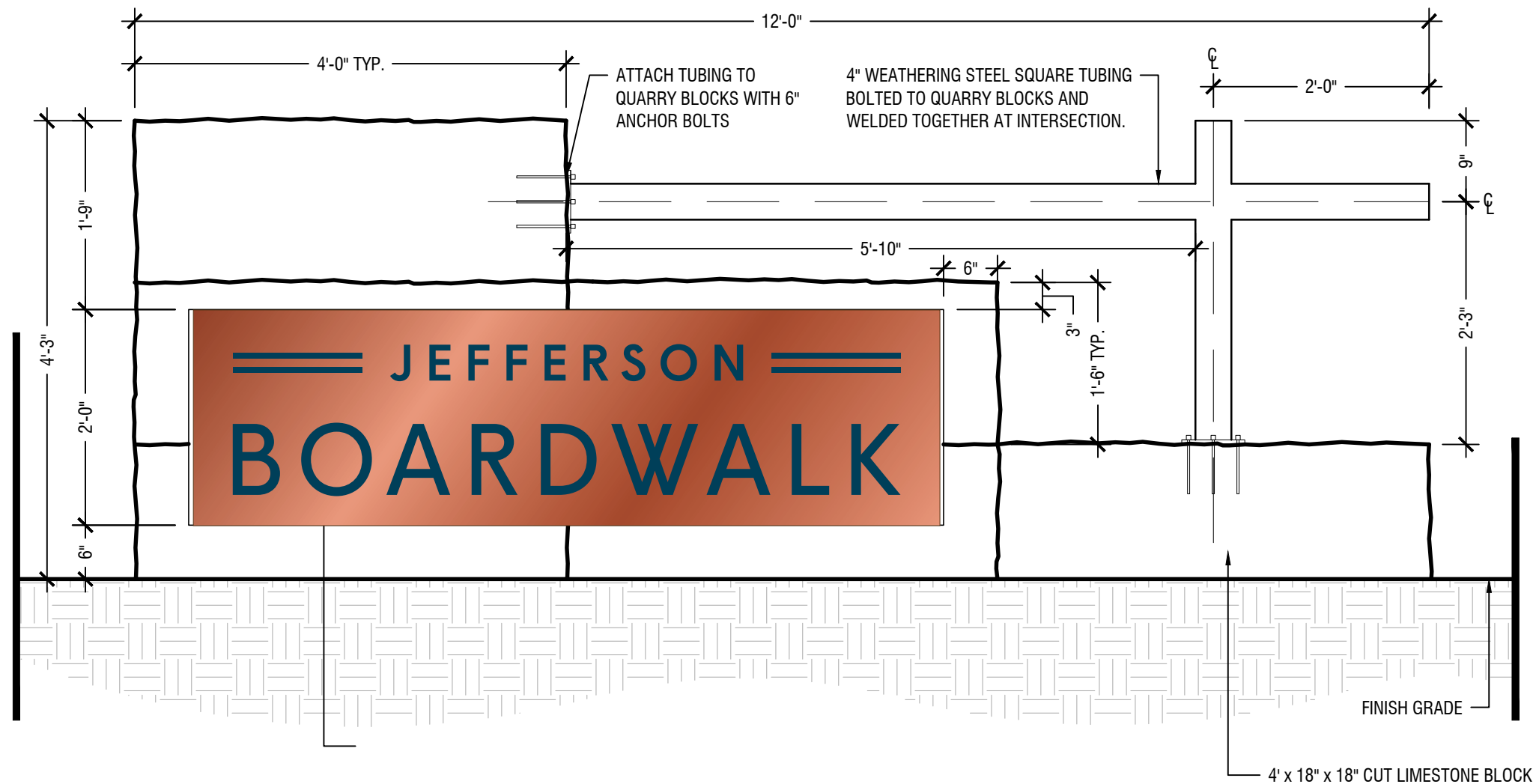
SHEET NO.

ES.01.03



NOTE:
ALL STONE WALL AND COLUMN DRAWINGS FOR DESIGN
INTENT ONLY, CONTRACTOR TO SUBMIT SIGNED AND
SEALED SHOP DRAWING FOR STRUCTURAL REINFORCEMENT
FOR REVIEW BY LANDSCAPE ARCHITECT.

PLAN



ELEVATION

A

MAIN ENTRY MONUMENT X 1 (D/F)
PLAN DETAILS. SCALE IS 3/4" = 1'

Monument Wall Plan/Elevation



FOURCE
COMMUNICATIONS

©2018 All ideas, arrangements and plans indicated or represented by these drawings are the property of Fource Communications, Ltd. and were created, evolved and developed for use on and in connection with the specified project. No part of the drawings, designs, arrangements or ideas herein shall be duplicated or used for any purpose whatsoever without the express written consent of Fource Communications, Ltd.

JOB NO.

JPI-816-4S

Jefferson Boardwalk
JPI Realty, Inc.
Farmers Branch, Texas

APPROVAL

Signature

Date

Your signature acknowledges full approval of the design layout and its content, releasing Fource Communications, Ltd. from any responsibility regarding incorrect information and design.

Any colors shown are only representative of actual colors to be used. Final colors will be matched as closely as possible. Colors shown tend to vary due to some materials used in the industry.

DESIGNER INITIALS

SAM

DATE

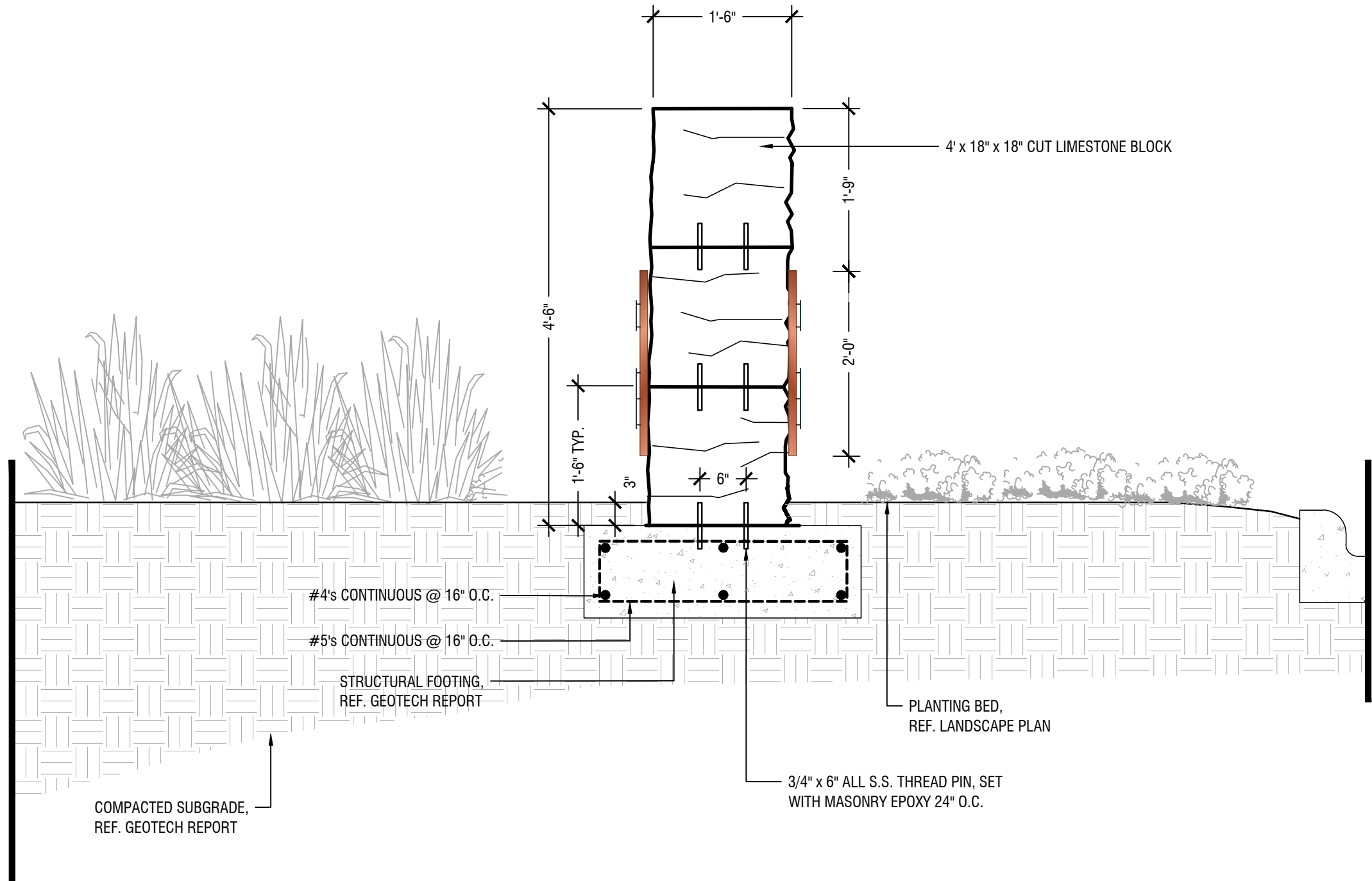
01/31/2018

SHEET TITLE

EXTERIOR
SIGNAGE

SHEET NO.

ES.01A.00



NOTE:
ALL STONE WALL AND COLUMN DRAWINGS FOR DESIGN
INTENT ONLY, CONTRACTOR TO SUBMIT SIGNED AND
SEALED SHOP DRAWING FOR STRUCTURAL REINFORCEMENT
FOR REVIEW BY LANDSCAPE ARCHITECT.

A

MAIN ENTRY MONUMENT X 1 (D/F)
PLAN DETAILS. SCALE IS 3/4" = 1'

Monument Wall Section

Scale: 3/4" = 1'-0"

B



©2018 All ideas, arrangements and plans indicated or represented by these drawings are the property of Fource Communications, Ltd. and were created, evolved and developed for use on and in connection with the specified project. No part of the drawings, designs, arrangements or ideas herein shall be duplicated or used for any purpose whatsoever without the express written consent of Fource Communications, Ltd.

JOB NO.

JPI-816-4S

Jefferson Boardwalk
JPI Realty, Inc.
Farmers Branch, Texas

APPROVAL

Signature

Date
Your signature acknowledges full approval of the design layout and its content, releasing Fource Communications, Ltd. from any responsibility regarding incorrect information and design.

Any colors shown are only representative of actual colors to be used. Final colors will be matched as closely as possible. Colors shown tend to vary due to some materials used in the industry.

DESIGNER INITIALS

SAM

DATE

01/31/2018

SHEET TITLE

EXTERIOR
SIGNAGE

SHEET NO.

ES.01 B.00



FOURCE
COMMUNICATIONS

©2018 All ideas, arrangements and plans indicated or represented by these drawings are the property of Fource Communications, Ltd. and were created, evolved and developed for use on and in connection with the specified project. No part of the drawings, designs, arrangements or ideas herein shall be duplicated or used for any purpose whatsoever without the express written consent of Fource Communications, Ltd.

JOB NO.

JPI-816-4S

Jefferson Boardwalk
JPI Realty, Inc.
Farmers Branch, Texas

APPROVAL

Signature

Date

Your signature acknowledges full approval of the design layout and its content, releasing Fource Communications, Ltd. from any responsibility regarding incorrect information and design.

Any colors shown are only representative of actual colors to be used. Final colors will be matched as closely as possible. Colors shown tend to vary due to some materials used in the industry.

DESIGNER INITIALS

SAM

DATE

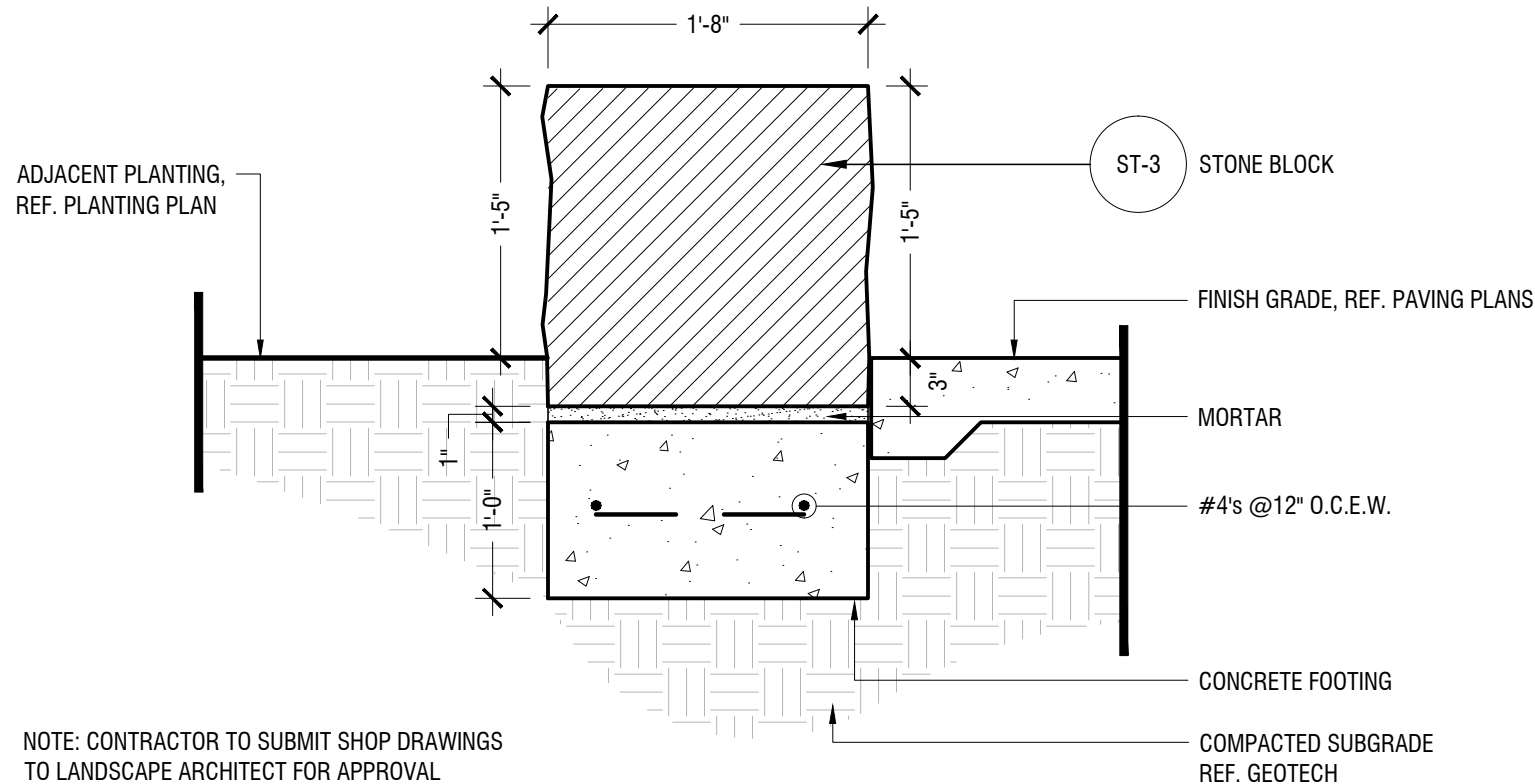
01/31/2018

SHEET TITLE

EXTERIOR
SIGNAGE

SHEET NO.

ES.01 C.00



Quarry Block Section

Scale: 1"=1'-0"

C

A

MAIN ENTRY MONUMENT X 1 (D/F)
PLAN DETAILS. SCALE IS 3/4" = 1'



OB NO.

PI-816-4S

Jefferson Boardwalk
JPI Realty, Inc.
Farmers Branch, Texas

APPROVAL

Signature

Any colors shown are only representative of actual colors to be used. Final colors will be matched as closely as possible. Colors shown tend to vary due to some materials used in the industry.

DESIGNER INITIALS

AM

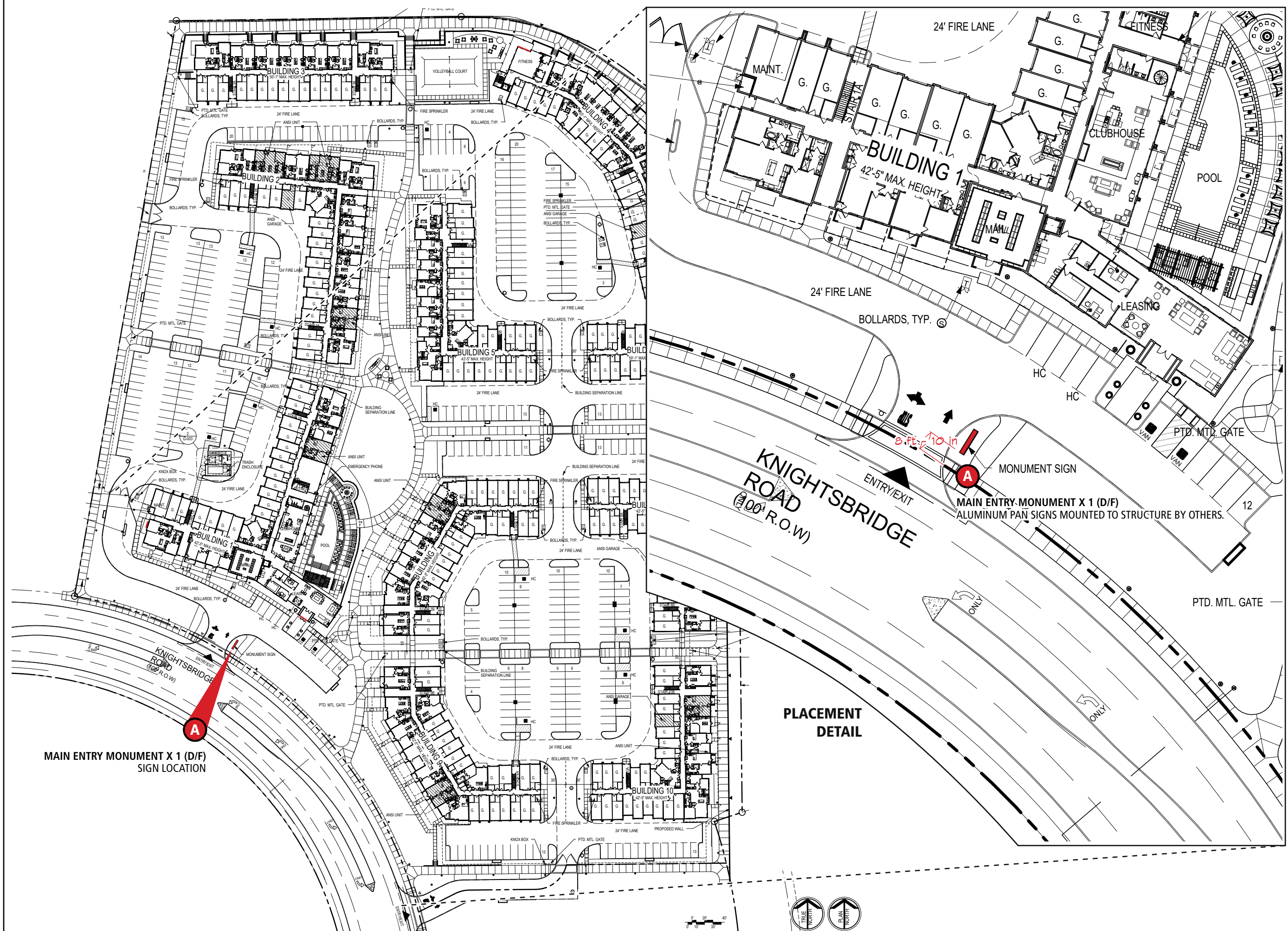
ATE

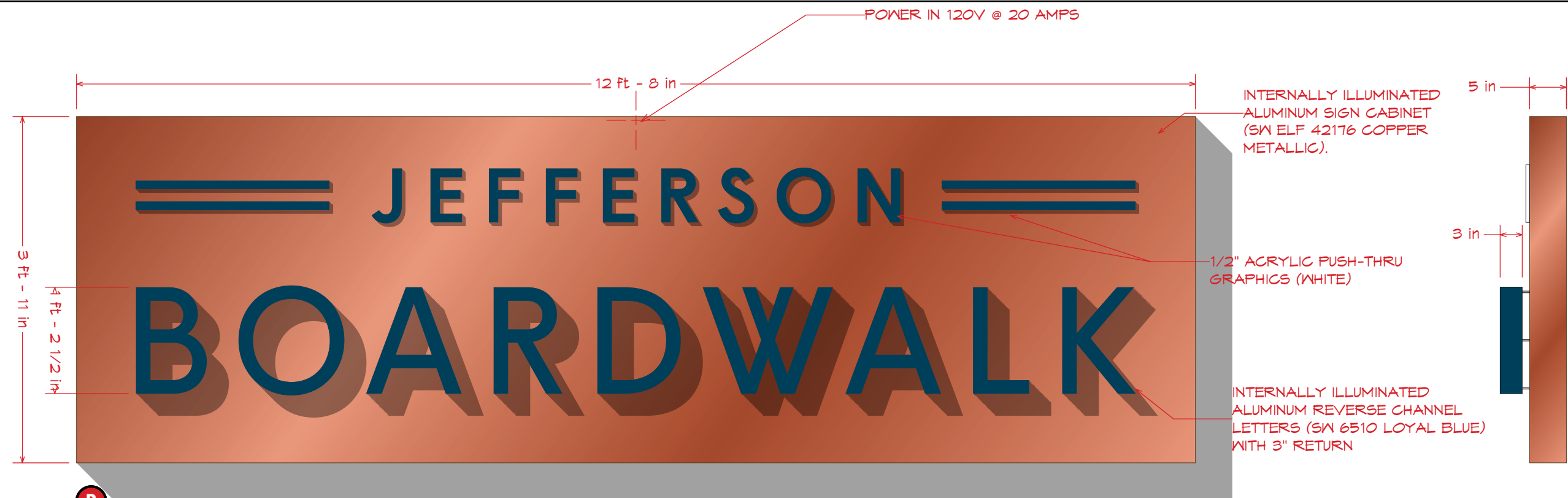
01/31/2018

SHEET TITLE

EXTERIOR SIGNAGE

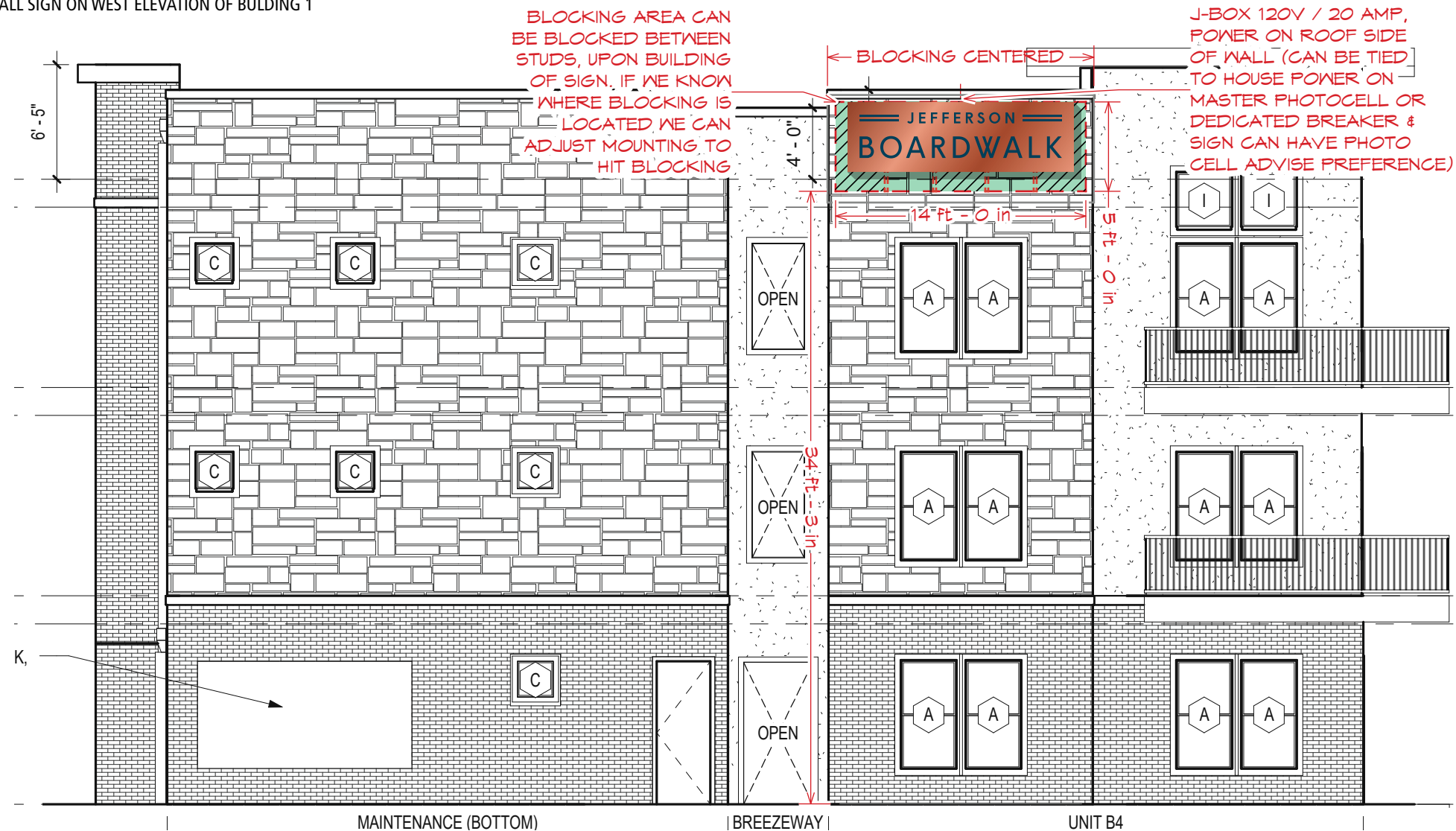
SHEET NO.

ES.01D.00



B

SECONDARY ENTRY SIGN X 1
ILLUMINATED WALL SIGN ON WEST ELEVATION OF BUILDING 1



©2018 All ideas, arrangements and plans indicated or represented by these drawings are the property of Fource Communications, Ltd. and were created, evolved and developed for use on and in connection with the specified project. No part of the drawings, designs, arrangements or ideas herein shall be duplicated or used for any purpose whatsoever without the express written consent of Fource Communications, Ltd.

JOB NO.

JPI-816-4S

Jefferson Boardwalk
JPI Realty, Inc.
Farmers Branch, Texas

APPROVAL

Signature

Date
Your signature acknowledges full approval of the design layout and its content, releasing Fource Communications, Ltd. from any responsibility regarding incorrect information and design.

Any colors shown are only representative of actual colors to be used. Final colors will be matched as closely as possible. Colors shown tend to vary due to some materials used in the industry.

DESIGNER INITIALS

SAM

DATE

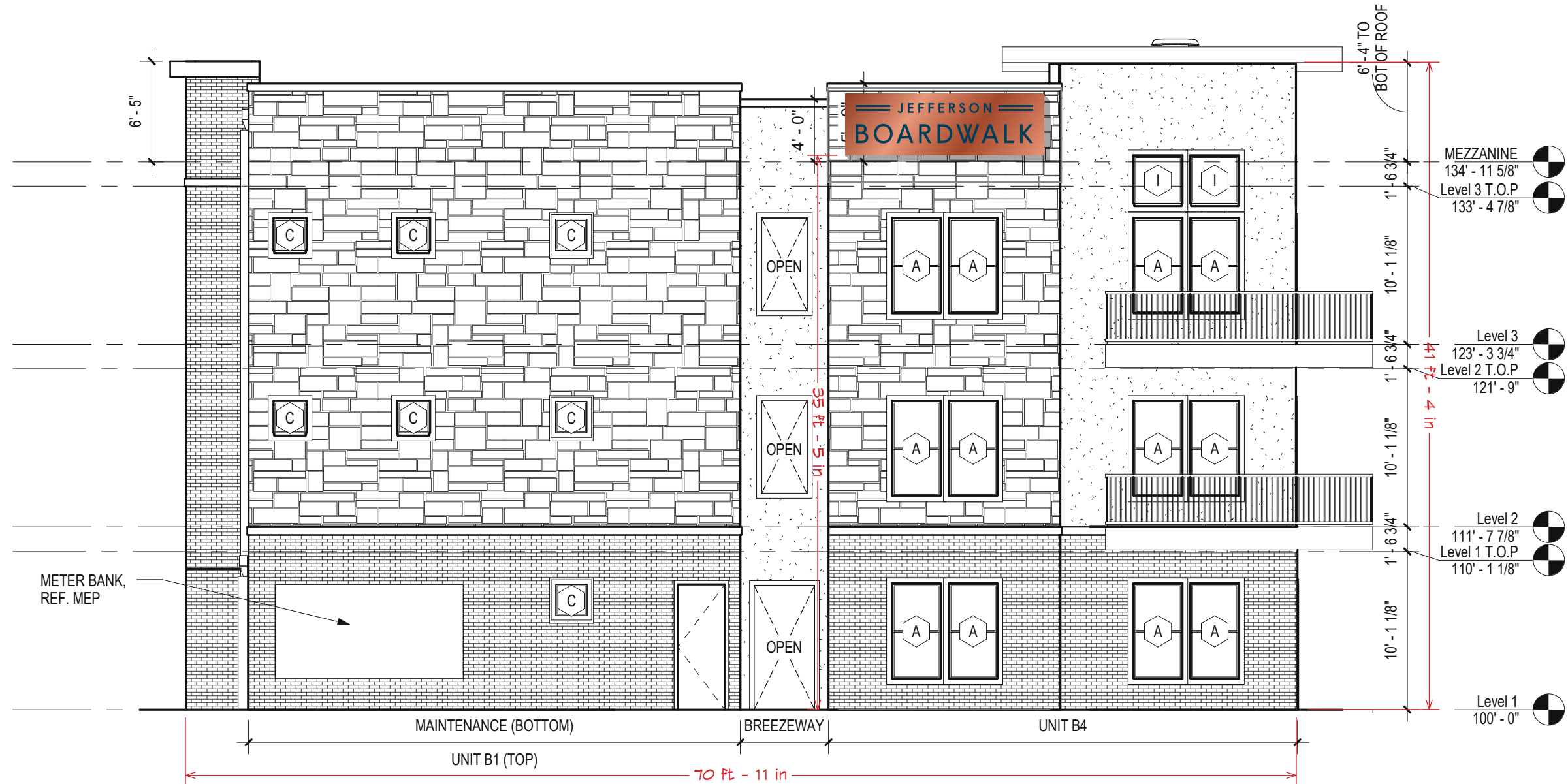
12/07/2017

SHEET TITLE

EXTERIOR
SIGNAGE

SHEET NO.

ES.02.02



3 Building 1 - West Elevation
1/8" = 1'-0"

SECONDARY ENTRY SIGN X 1
SIGN LOCATION

B



©2018 All ideas, arrangements and plans indicated or represented by these drawings are the property of Fource Communications, Ltd. and were created, evolved and developed for use on and in connection with the specified project. No part of the drawings, designs, arrangements or ideas herein shall be duplicated or used for any purpose whatsoever without the express written consent of Fource Communications, Ltd.

JOB NO.

JPI-816-4S

Jefferson Boardwalk
JPI Realty, Inc.
Farmers Branch, Texas

APPROVAL

Signature

Date
Your signature acknowledges full approval of the design layout and its content, releasing Fource Communications, Ltd. from any responsibility regarding incorrect information and design.

Any colors shown are only representative of actual colors to be used. Final colors will be matched as closely as possible. Colors shown tend to vary due to some materials used in the industry.

DESIGNER INITIALS

SAM

DATE

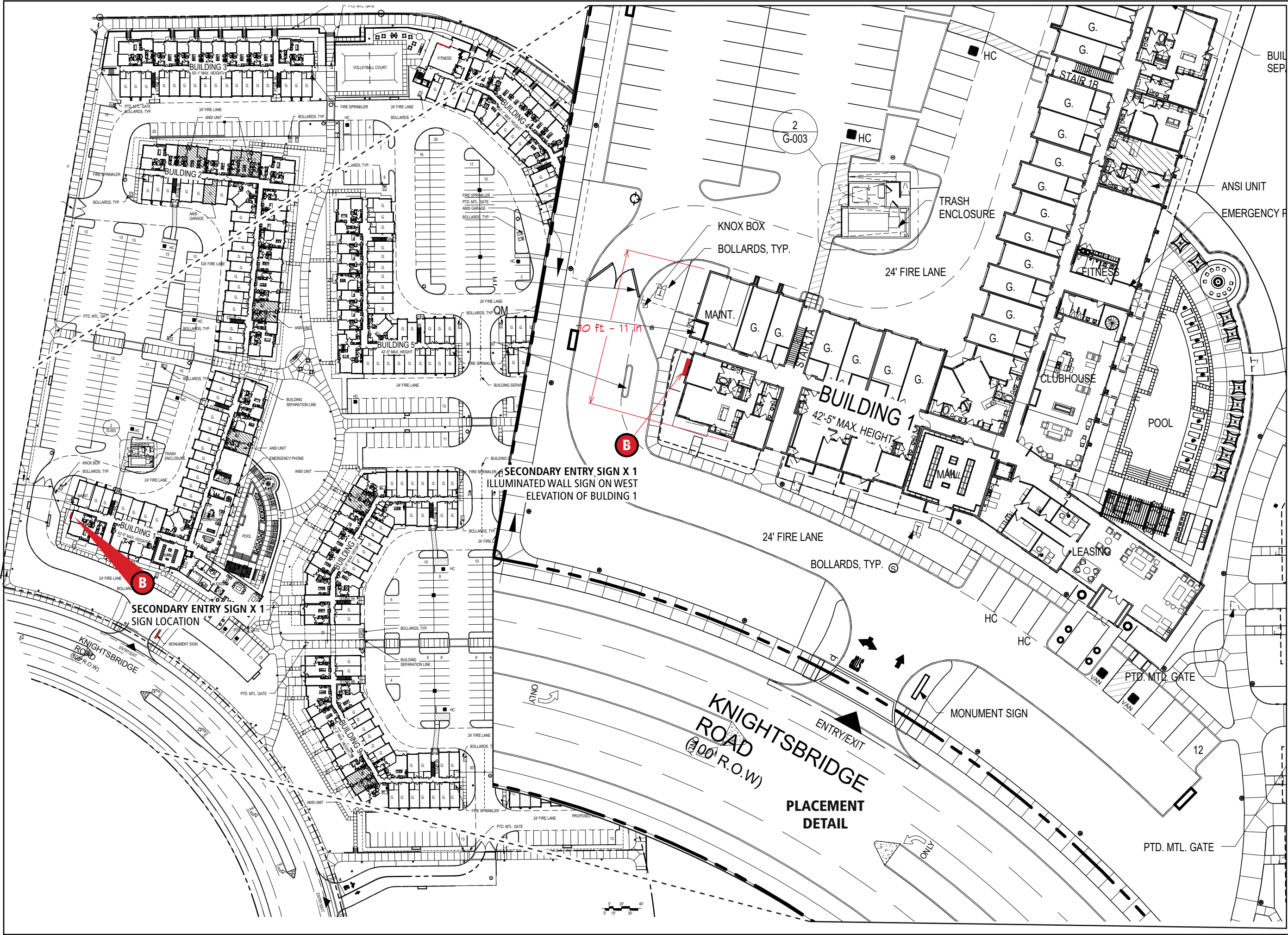
12/07/2017

SHEET TITLE

EXTERIOR
SIGNAGE

SHEET NO.

ES.02A.00



FOURCE
COMMUNICATIONS

©2018 All ideas, arrangements and plans indicated or represented by these drawings are the property of Fource Communications, Ltd. and were created, evolved and developed for use on and in connection with the specified project. No part of the drawings, designs, arrangements or ideas herein shall be duplicated or used for any purpose whatsoever without the express written consent of Fource Communications, Ltd.

JOB NO.

JPI-816-4S

Jefferson Boardwalk
JPI Realty, Inc.
Farmers Branch, Texas

APPROVAL

Signature

Your signature acknowledges full approval of the design layout and its content, releasing Fource Communications, Ltd. from any responsibility regarding incorrect information and design.

Any colors shown are only representative of actual colors to be used. Final colors will be matched as closely as possible. Colors shown tend to vary due to some materials used in the industry.

DESIGNER INITIALS

SAM

DATE

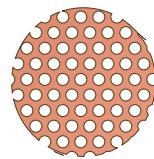
01/31/2018

SHEET TITLE

EXTERIOR
SIGNAGE

SHEET NO.

ES.02B.00

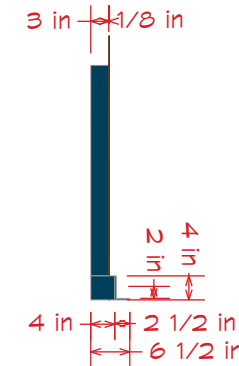
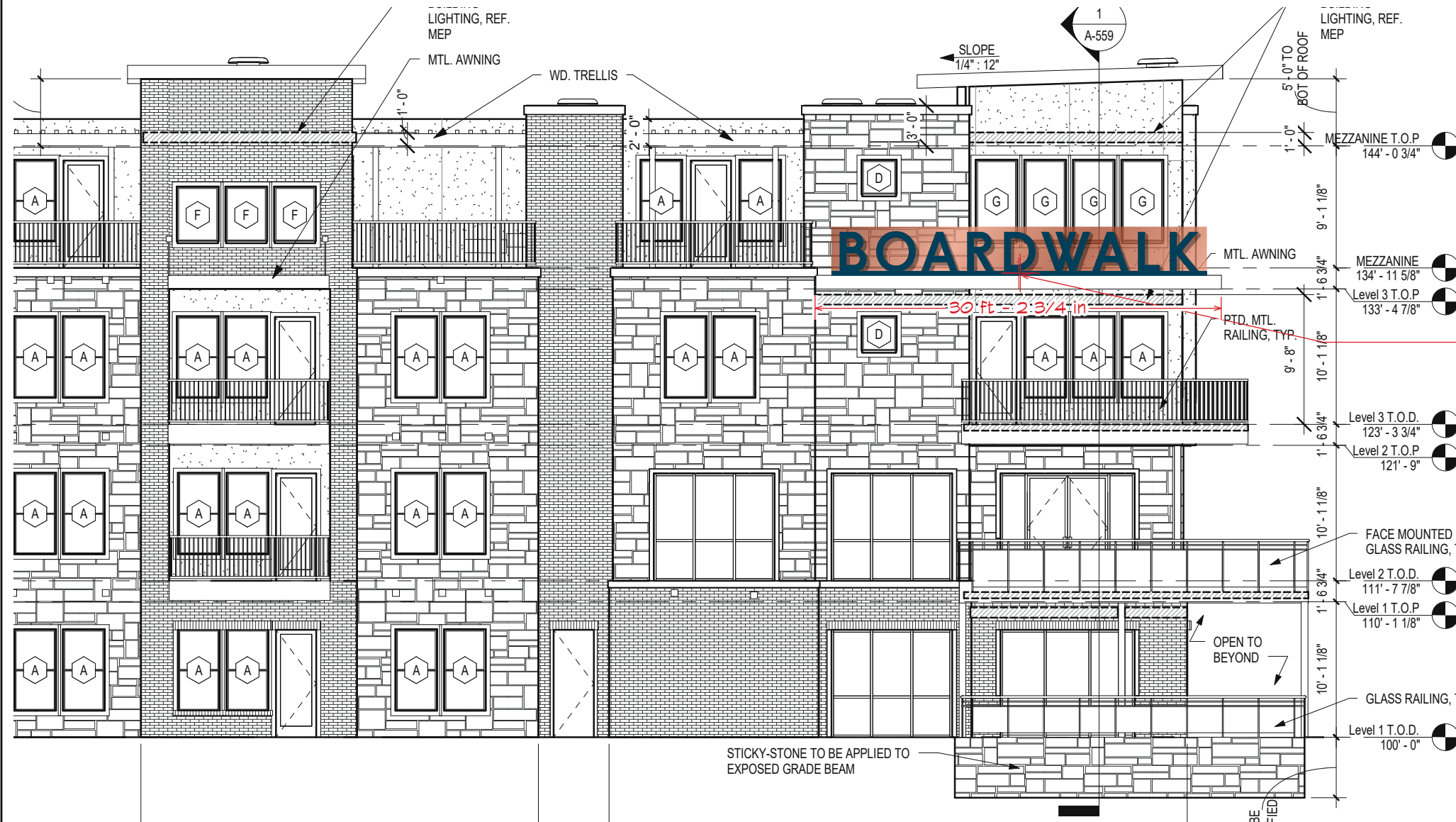


DETAIL OF
PERFORATED
ALUMINUM



D

EXTERIOR CHANNEL LETTERS X 1
ILLUMINATED STAND-UP LETTERS MOUNTED TO METAL AWNING ON NORTH
ELEVATION OF BUILDING 4.



MOUNTING DETAIL



FOURCE
COMMUNICATIONS

©2018 All ideas, arrangements and plans indicated or represented by these drawings are the property of Fource Communications, Ltd. and were created, evolved and developed for use on and in connection with the specified project. No part of the drawings, designs, arrangements or ideas herein shall be duplicated or used for any purpose whatsoever without the express written consent of Fource Communications, Ltd.

JOB NO.

JPI-816-4S

Jefferson Boardwalk
JPI Realty, Inc.
Farmers Branch, Texas

APPROVAL

Signature

Your signature acknowledges full approval of the design layout and its content, releasing Fource Communications, Ltd. from any responsibility regarding incorrect information and design.

Any colors shown are only representative of actual colors to be used. Final colors will be matched as closely as possible. Colors shown tend to vary due to some materials used in the industry.

DESIGNER INITIALS

SAM

DATE

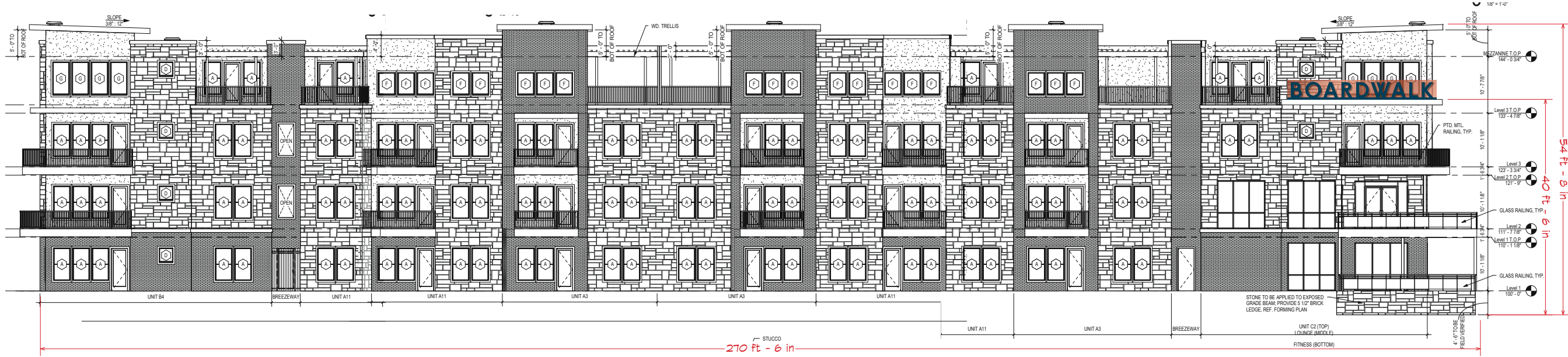
12/08/2017

SHEET TITLE

EXTERIOR
SIGNAGE

SHEET NO.

ES.04.01



2 Building 4 - North Elevation
1/8" = 1'-0"

D

EXTERIOR CHANNEL LETTERS X 1
SIGN LOCATION



FOURCE
COMMUNICATIONS

©2018 All ideas, arrangements and plans indicated or represented by these drawings are the property of Fource Communications, Ltd. and were created, evolved and developed for use on and in connection with the specified project. No part of the drawings, designs, arrangements or ideas herein shall be duplicated or used for any purpose whatsoever without the express written consent of Fource Communications, Ltd.

JOB NO.

JPI-816-4S

Jefferson Boardwalk
JPI Realty, Inc.
Farmers Branch, Texas

APPROVAL

Signature

Date
Your signature acknowledges full approval of the design layout and its content, releasing Fource Communications, Ltd. from any responsibility regarding incorrect information and design.

Any colors shown are only representative of actual colors to be used. Final colors will be matched as closely as possible. Colors shown tend to vary due to some materials used in the industry.

DESIGNER INITIALS

SAM

DATE

12/08/2017

SHEET TITLE

EXTERIOR
SIGNAGE

SHEET NO.

ES.04A.01



OB NO.

PI-816-4S

Jefferson Boardwalk
JPI Realty, Inc.
Farmers Branch, Texas

APPROVAL

Signature

Any colors shown are only representative of actual colors to be used. Final colors will be matched as closely as possible. Colors shown tend to vary due to some materials used in the industry.

DESIGNER INITIALS

AM

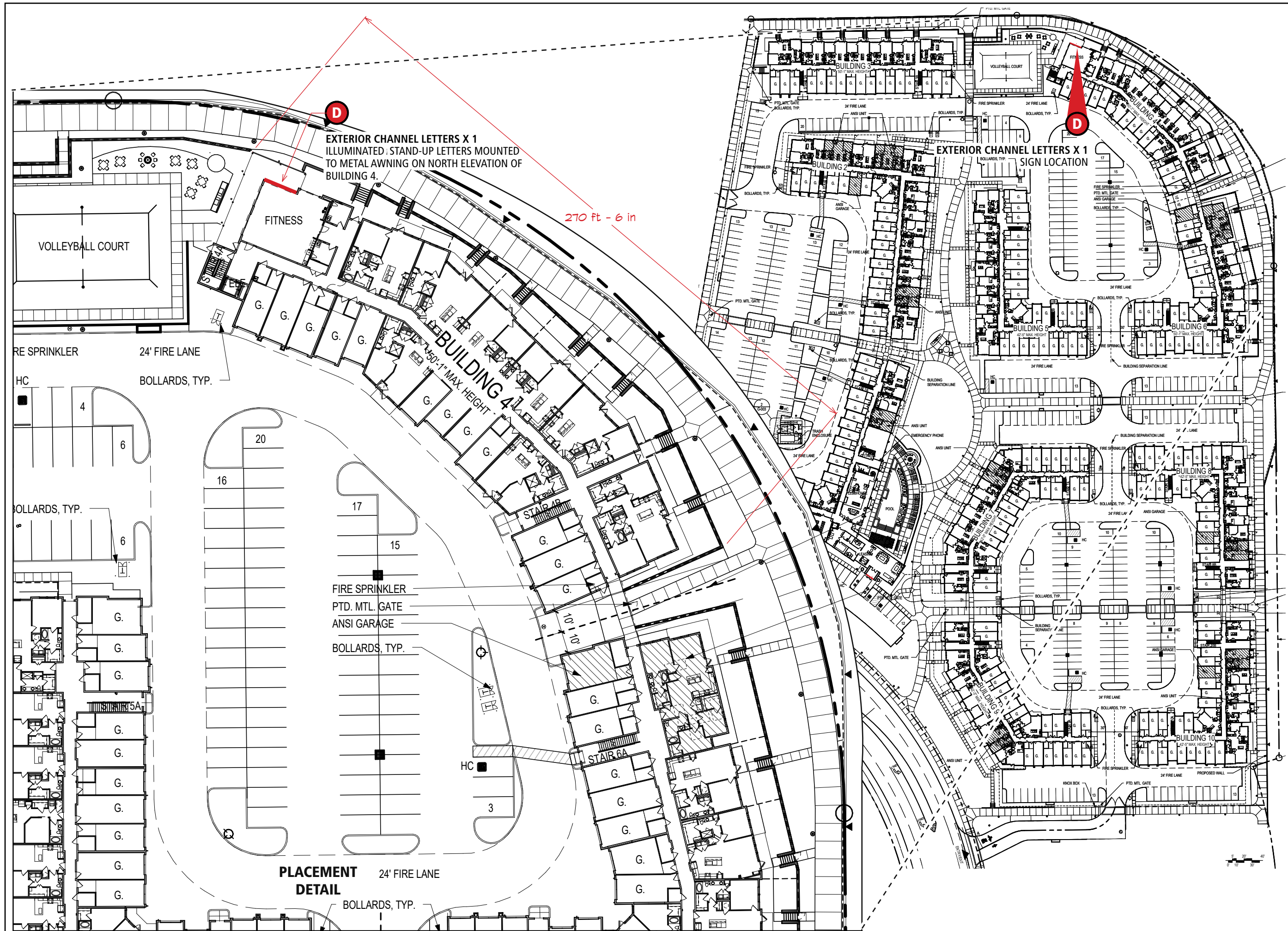
ATE

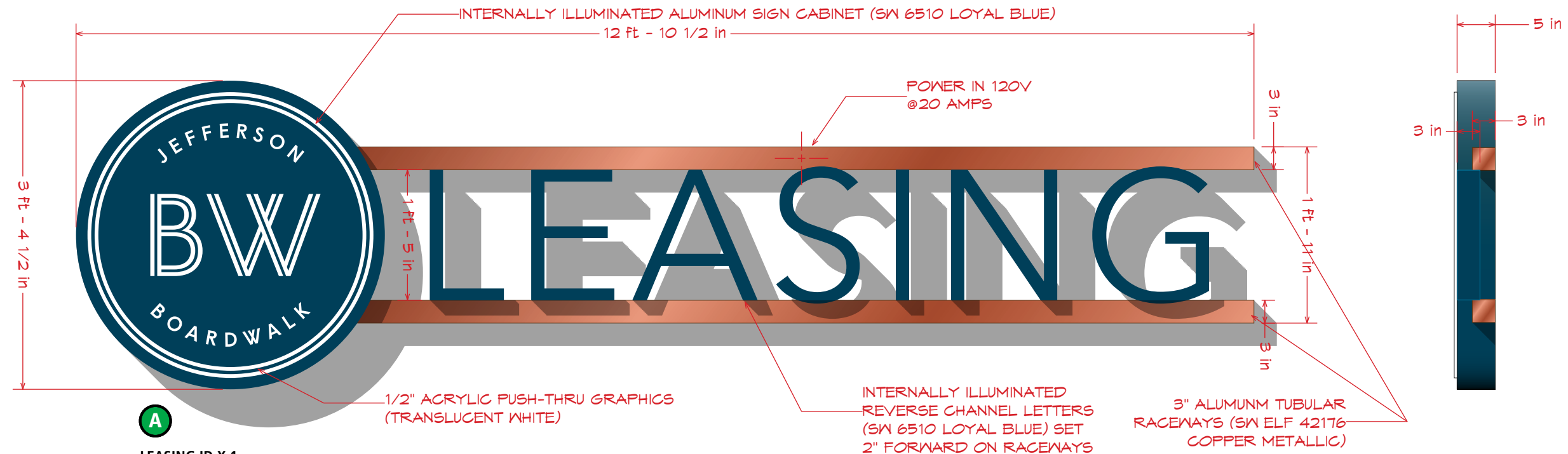
01/31/2018

SHEET TITLE

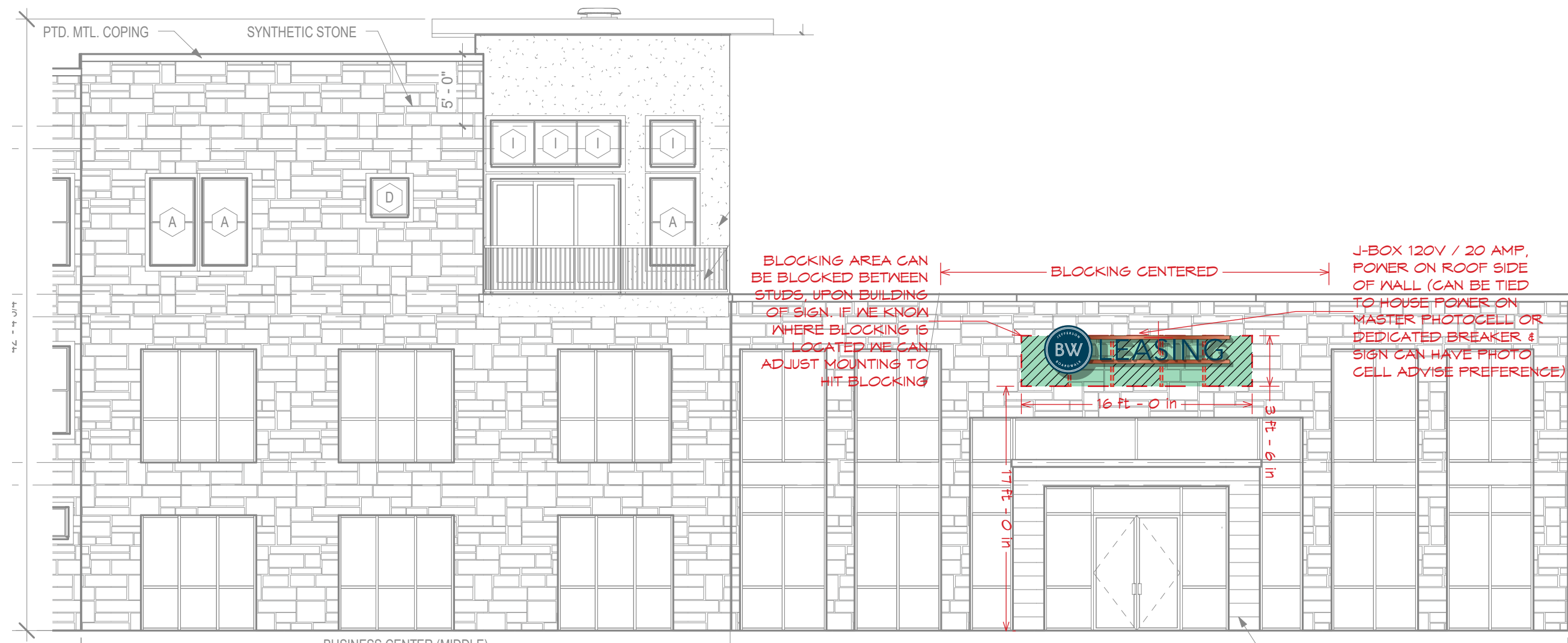
EXTERIOR SIGNAGE

SHEET NO.

ES.04B.00



A
LEASING ID X 1
ILLUMINATED SIGN LOADS TO FASCIA OF LEASING CENTER



©2018 All ideas, arrangements and plans indicated or represented by these drawings are the property of Fource Communications, Ltd. and were created, evolved and developed for use on and in connection with the specified project. No part of the drawings, designs, arrangements or ideas herein shall be duplicated or used for any purpose whatsoever without the express written consent of Fource Communications, Ltd.

JOB NO.
JPI-816-4S

Jefferson Boardwalk
JPI Realty, Inc.
Farmers Branch, Texas

APPROVAL

Signature

Date
Your signature acknowledges full approval of the design layout and its content, releasing Fource Communications, Ltd. from any responsibility regarding incorrect information and design.

Any colors shown are only representative of actual colors to be used. Final colors will be matched as closely as possible. Colors shown tend to vary due to some materials used in the industry.

DESIGNER INITIALS

SAM

DATE

12/08/2016

SHEET TITLE

LEASING CENTER
EXTERIOR SIGNAGE

SHEET NO.

LCES.01.02



FOURCE
COMMUNICATIONS

©2018 All ideas, arrangements and plans indicated or represented by these drawings are the property of Fource Communications, Ltd. and were created, evolved and developed for use on and in connection with the specified project. No part of the drawings, designs, arrangements or ideas herein shall be duplicated or used for any purpose whatsoever without the express written consent of Fource Communications, Ltd.

JOB NO.

JPI-816-4S

Jefferson Boardwalk
JPI Realty, Inc.
Farmers Branch, Texas

APPROVAL

Signature

Date
Your signature acknowledges full approval of the design layout and its content, releasing Fource Communications, Ltd. from any responsibility regarding incorrect information and design.

Any colors shown are only representative of actual colors to be used. Final colors will be matched as closely as possible. Colors shown tend to vary due to some materials used in the industry.

DESIGNER INITIALS

SAM

DATE

01/31/2018

SHEET TITLE

LEASING CENTER
EXTERIOR SIGNAGE

SHEET NO.

LCES.01A.00

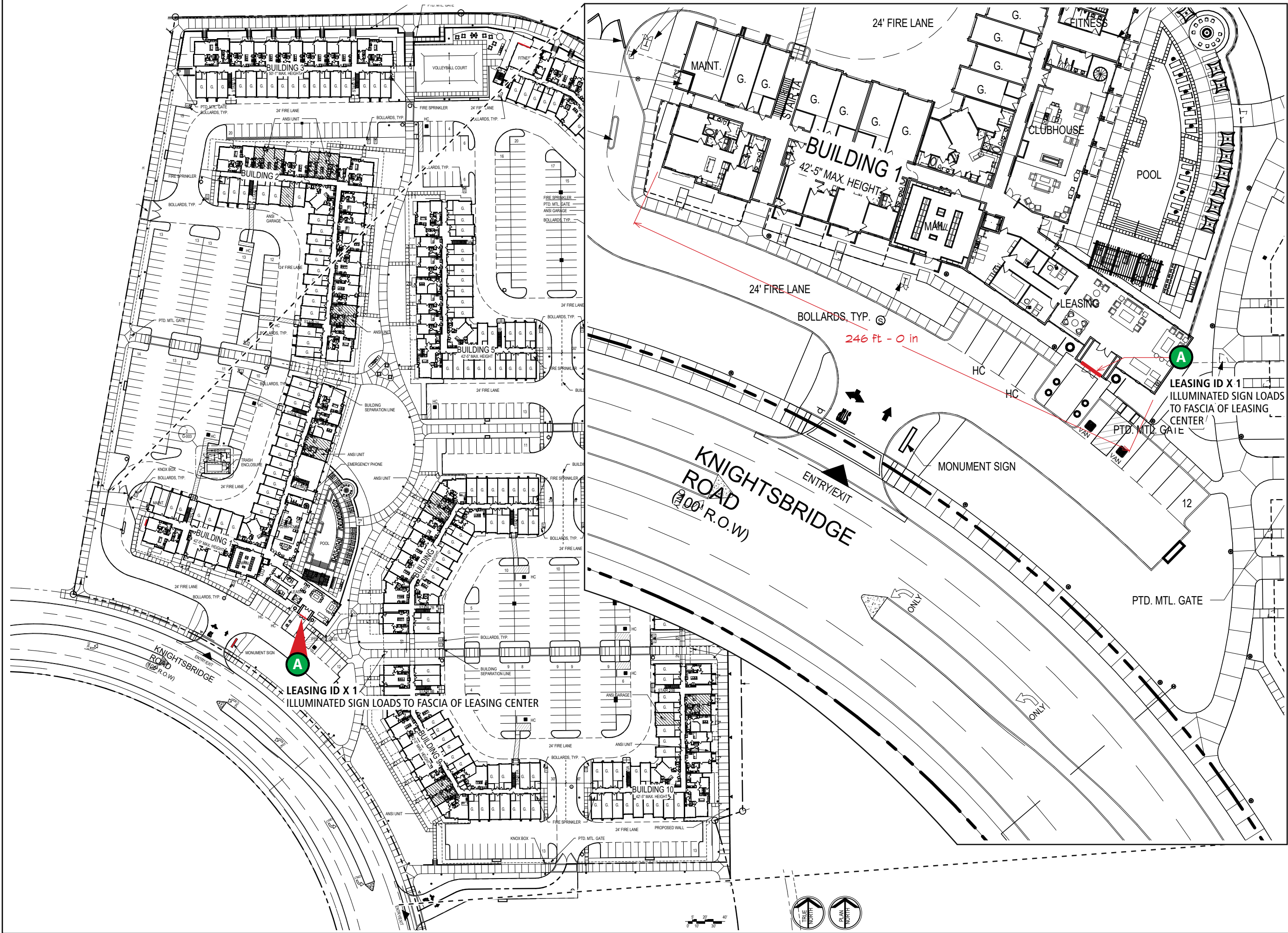


1 Building 1 - South Elevation
1/8" = 1'-0"

A

LEASING ID X 1

ILLUMINATED SIGN LOADS TO FASCIA OF LEASING CENTER



©2016 All ideas, arrangements and plans indicated or represented by these drawings are the property of Fource Communications, Ltd. and were created, evolved and developed for use on and in connection with the specified project. No part of the drawings, designs, arrangements or ideas herein shall be duplicated or used for any purpose whatsoever without the express written consent of Fource Communications, Ltd.

JOB NO.

JPI-816-4S

Jefferson Boardwalk
JPI Realty, Inc.
Farmers Branch, Texas

APPROVAL

Signature

Your signature acknowledges full approval of the design layout and its content, releasing Fource Communications, Ltd. from any responsibility regarding incorrect information and design.

Any colors shown are only representative of actual colors to be used. Final colors will be matched as closely as possible. Colors shown tend to vary due to some materials used in the industry.

DESIGNER INITIALS

SAM

DATE

01/31/2018

SHEET TITLE

LEASING CENTER
EXTERIOR SIGNAGE

SHEET NO.

LCES.01B.00