

DEVELOPER/OWNER



JOB NUMBER: XSC18001_JESUS HOUSE

DESIGNED BY: JDC

DRAWN BY: JDC

CHECKED BY: PCF

ISSUE DATE: 05-24-2018

REV:

RELIMINARY
FOR REVIEW ONLY
THESE DOCUMENTS ARE FOR
DESIGN REVIEW ONLY AND
NOT INTENDED FOR THE
PURPOSES OF CONSTRUCTION,
BIDDING OR PERMIT. THEY
WERE PREPARED BY, OR
UNDER THE SUPERVISION OF

PATRICK C. FILSON
P.E.# 108577
DATE: 4/3/2018

Kirkman Engineering, LLC
Texas Firm No: 15874

JESUS
HOUSE

FARMERS BRANCH,
TEXAS

SITE PLAN

SHEET

SP 2.0



Know what's below.
Call before you dig.

DIMENSION NOTE

1. ALL DIMENSIONS FROM THE FACE OF CURB UNLESS NOTED OTHERWISE.
2. ALL CURB RADII SHALL BE 3' AT FACE OF CURB UNLESS OTHERWISE NOTED.

LOCATION

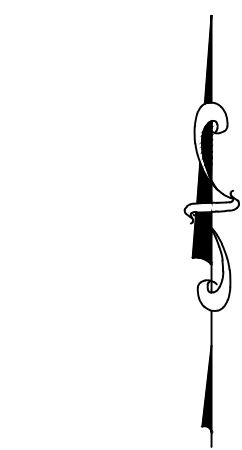
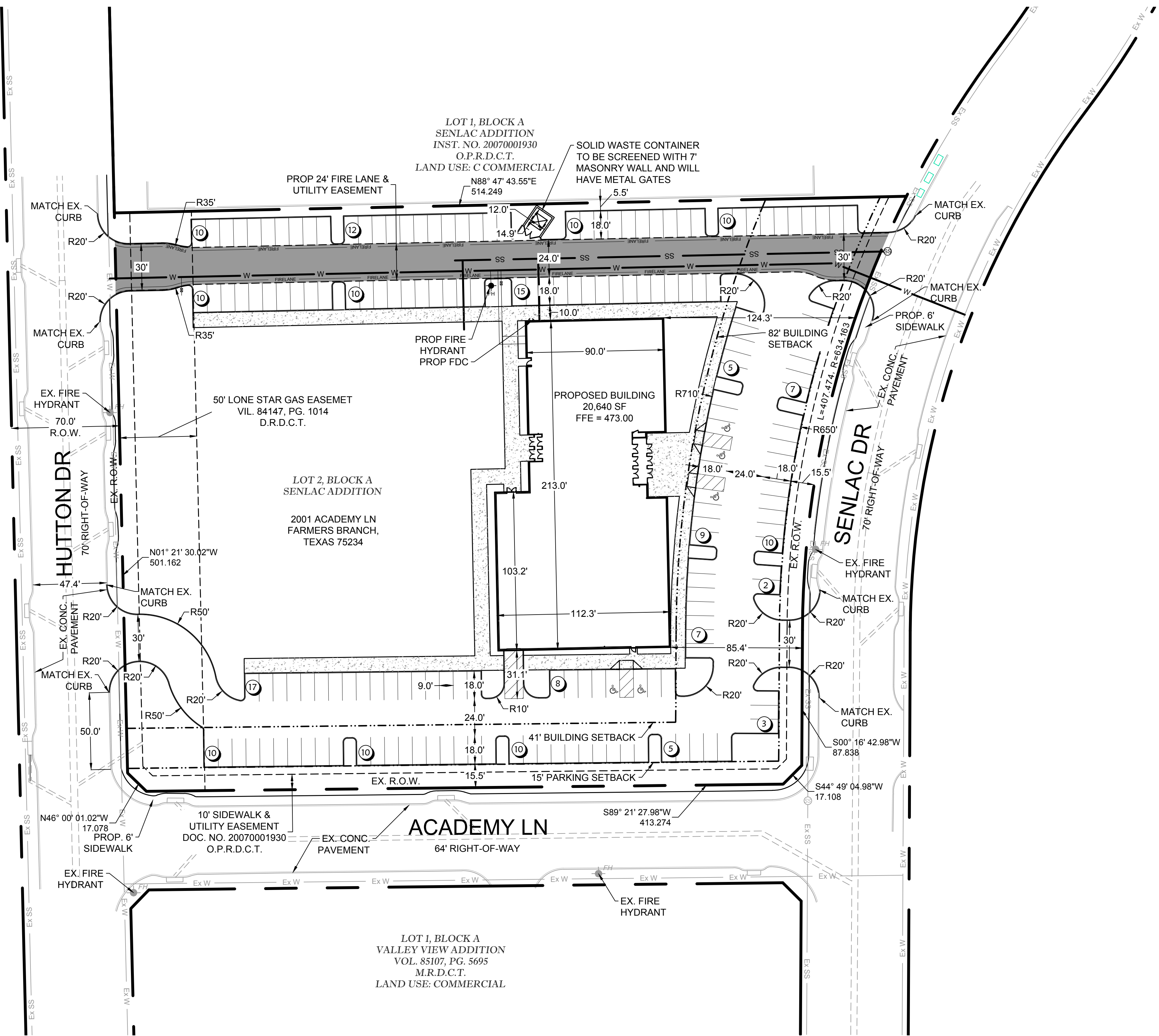
Northeast Corner of
Hutton Dr and
Academy Ln

OWNER

RCCG Jesus House Dallas
4440 Spring Valley Road
Farmers Branch, Texas 75244
Telephone (972) 980-4474
Contact: Femi Omotayo

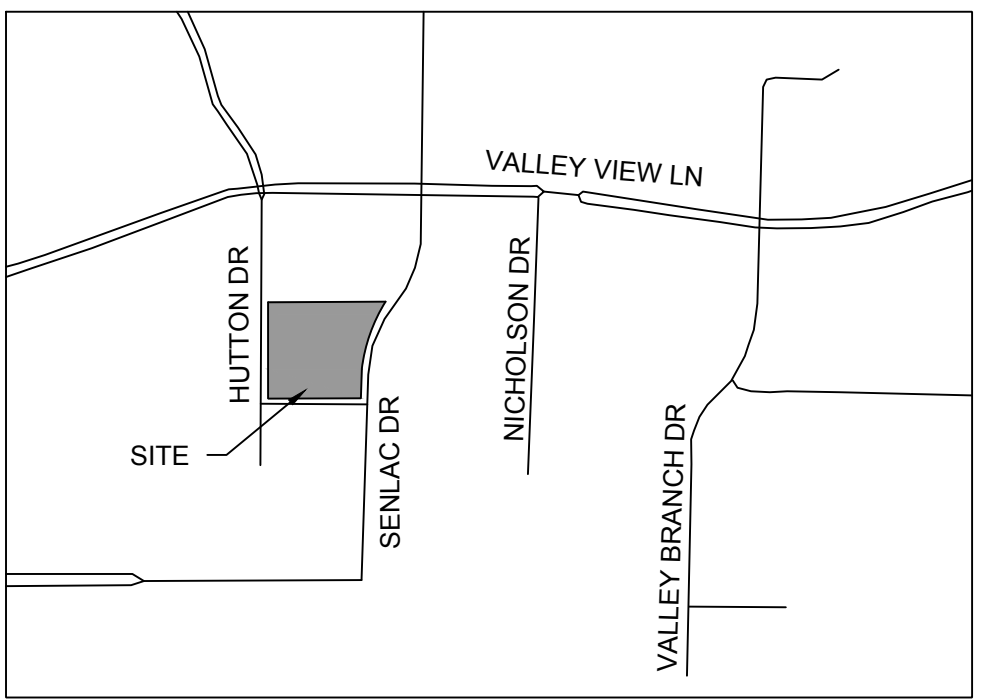
ENGINEER

Kirkman Engineering
4821 Merlot Ave., Suite 210
Grapevine, Texas 76051
Telephone (817) 488-4960
TBPE No. 15874
Contact: Patrick Filson, P.E.



GRAPHIC SCALE

SCALE: 1" = 40'



SITE MAP

N.T.S.

LEGEND

PROPOSED FACE AND
BACK OF CURB

PROPOSED FIRE LANE,
UTILITY & MUTUAL
ACCESS EASEMENT

PARKING COUNT

SITE DATA

Existing Zoning	PD-77
Existing Land Use	Vacant
Proposed Use	Worship Facility
Lot Area	3,976 Ac. (173,181 Sq. Ft.)
Building Floor Area	20,640 Sq. Ft.
Building Height	1 Story/41 Ft.
Finished Floor Elevation	473.00
Floor Area Ratio / Lot Coverage	0.12:1 / 11.9%
Impervious Cover	88,300 Sq. Ft.
Impervious Cover Ratio	0.51:1 / 51.0%
Seats in Main Assembly	540 Seats
Parking Required	180 Spaces
Parking Provided	180 Spaces
Handicap Parking	6 Spaces

Note

1. Handicap parking is provided in accordance with ADA standards.
2. Required parking for Worship Facilities is one space per 3 seats in main place of assembly.

NOTES:

1. ACCESS DRIVES ALONG HUTTON DRIVE WILL BE APPROVED BY ATMOS.