



Specific Use Permit Request 18-SU-14

FARMERS BRANCH
CITY COUNCIL
OCTOBER 1, 2018



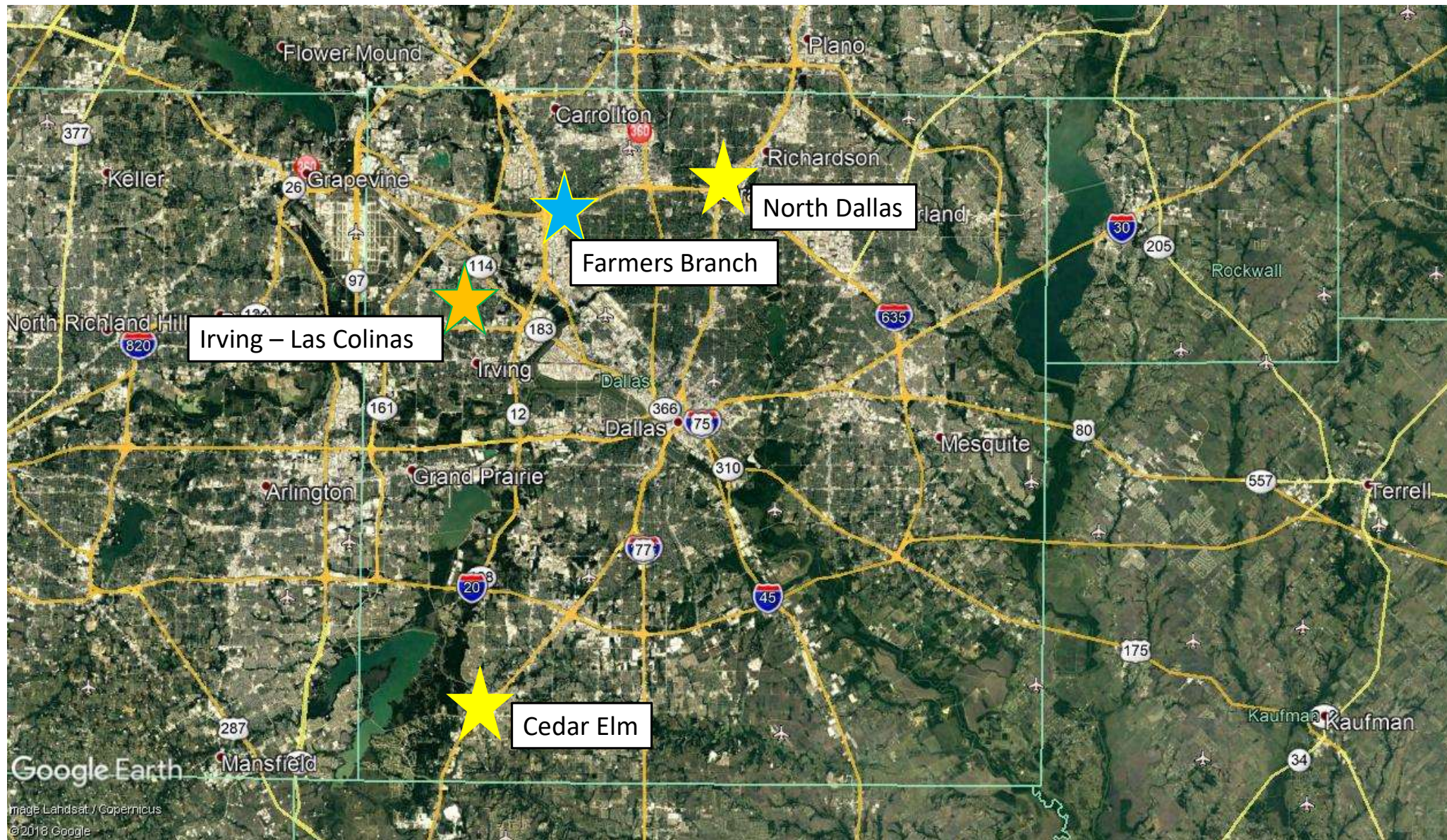
Maxwell J. Fisher, AICP
Masterplan Land Use Consultants
Ph: 214.761.9197

Institution Profile

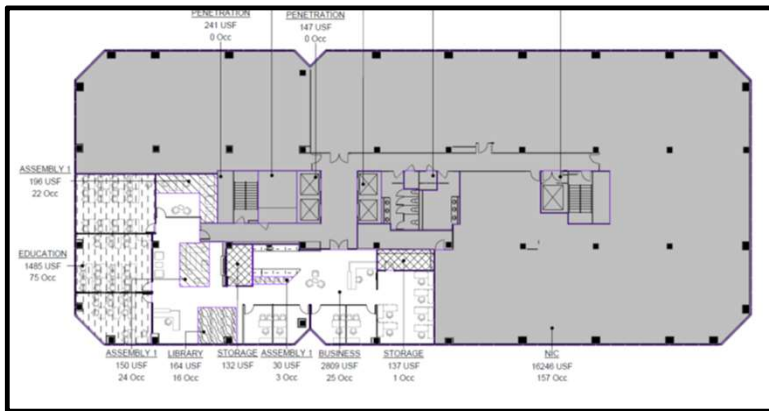


- Founded in 1892
- Bachelor's, Master's, Associate's Degrees and Certificates
- Science, business, IT, accounting, HR and education
- Fall enrollment – 475 students
- Practical programs for working adults - average age of 35
- 85-90% online students

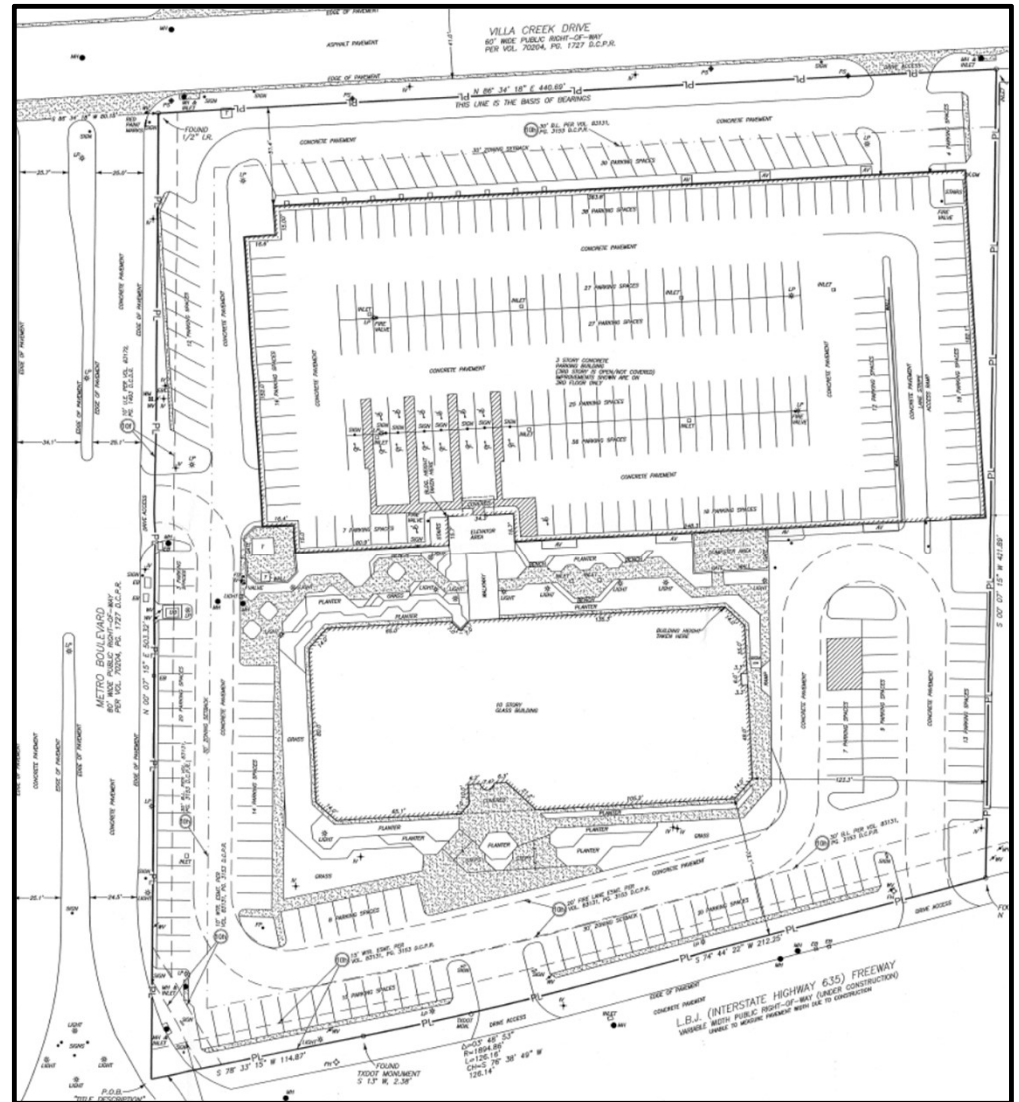




Site and Building Location



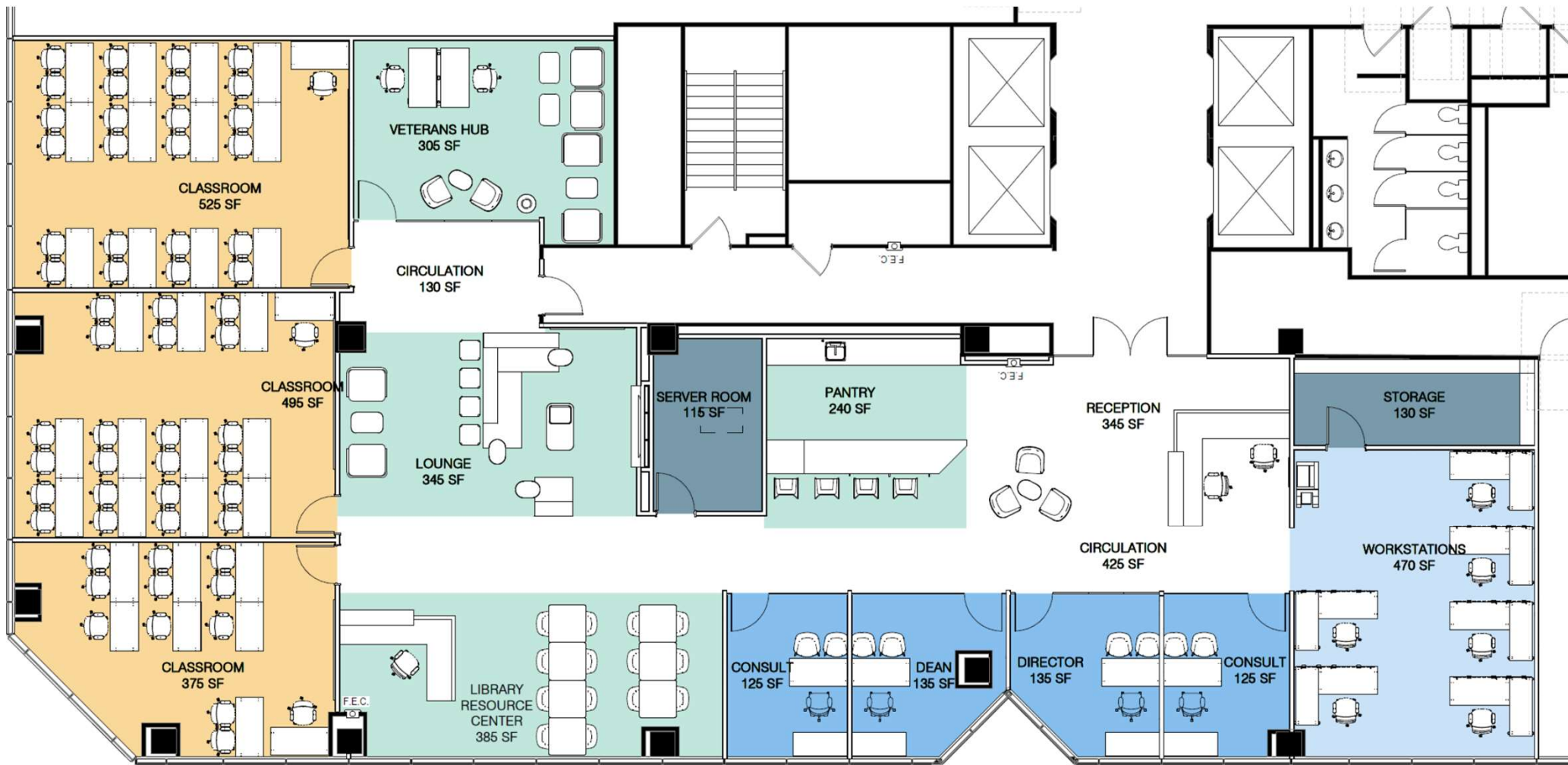
- Southwest Quadrant of 4th Floor
- 5,202 SF of floor area, Suite 450



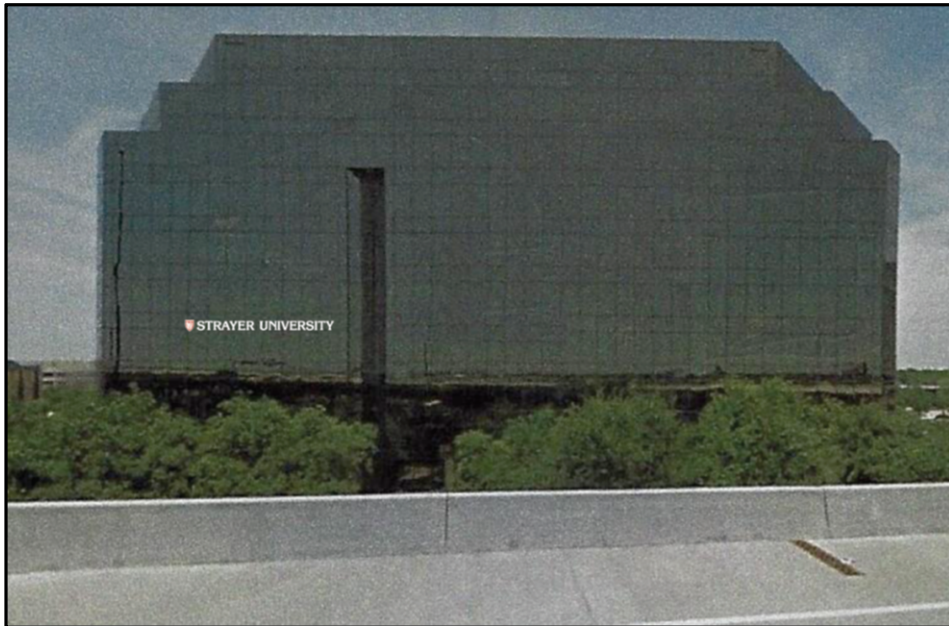
Farmers Branch Campus Details



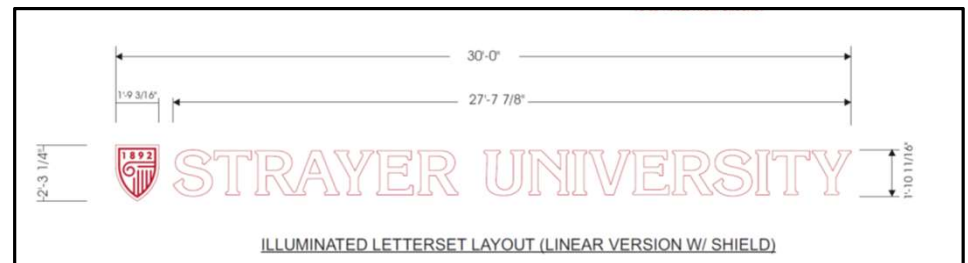
- Office administration including Dean (4- 8 employees at any one time)
- Student support services
 - Library, work stations, lounge and pantry
- Three classrooms
- Classroom size of 2 to 20 students; average of 9.
- Classes held:
 - Monday through Thursday 6-10PM
 - Saturdays 8AM-1PM

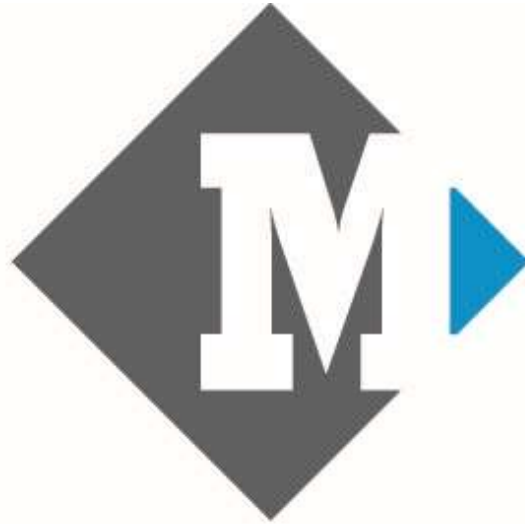


Wall Sign



- Approximately 68 SF in area
- Attached to south façade facing LBJ
- 4th floor height location





Masterplan

Maxwell J. Fisher, AICP
214.761.9197
maxwell@masterplantexas.com

Military Program

- - Relationship to Department of Defense
- - Scholarships
- - Credit for military training
- - Veterans Resource Center
- - Virtual community for service members and veterans

