

ELEV=136'-0"  
T.O. PARAPET

PAINTED AND TEXTURED  
TILT WALL PANEL(TYP.)

P1

PRE-FABRICATED ALUMINUM  
AWNING BY OTHERS

10'-0"

ELEV=100'-0"  
F.F.

14'-0"

P1

ANODIZED ALUMINUM  
STOREFRONT SYSTEM

PAINTED AND TEXTURED  
TILT WALL PANEL(TYP.)

P3

P2

P3

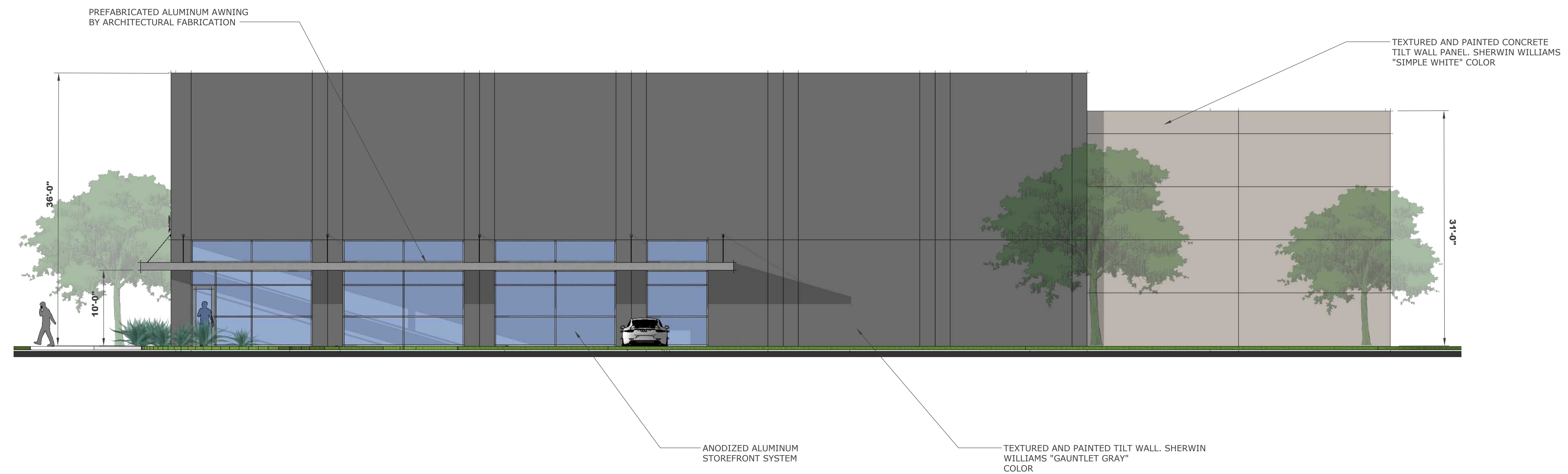
P1

ELEV=132'-0"  
T.O. PARAPET

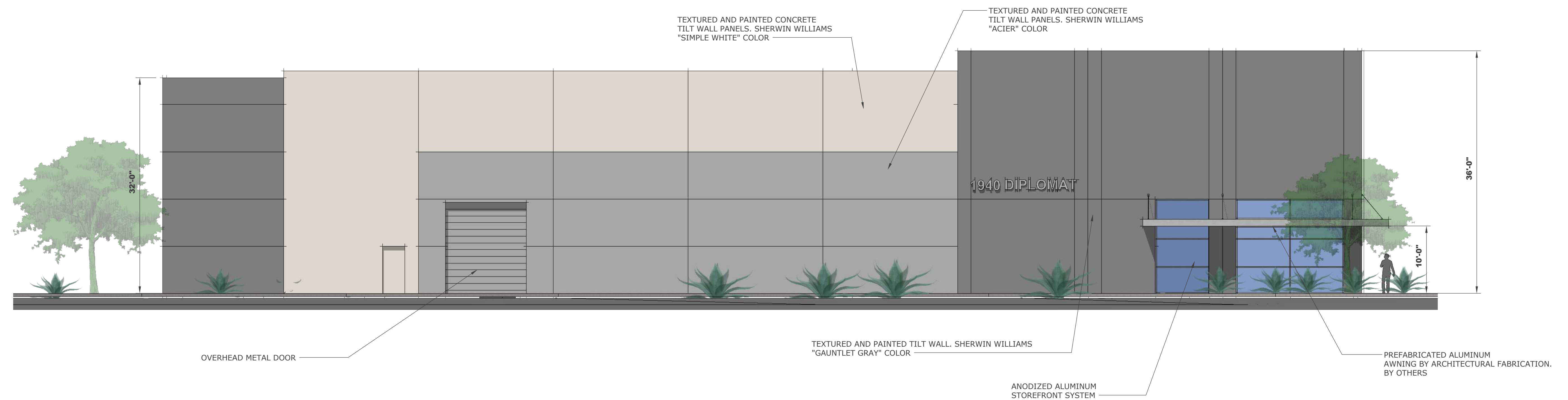
EAST ELEVATION

Architectural elevation drawing of the South Elevation of a building. The drawing shows a long, low structure with a grid of windows and doors. Key features include:

- PAINTED HOLLOW CORE METAL DOOR (TYP.)**: Located on the left side of the elevation.
- PAINTED AND TEXTURED TILT WALL PANEL (TYP.)**: Callouts pointing to the upper sections of the wall.
- PRE-FABRICATED ALUMINUM AWNING BY OTHERS**: Located on the right side of the elevation.
- ANODIZED ALUMINUM STOREFRONT SYSTEM**: Located at the bottom right of the elevation.
- ELEV=132'-0" T.O. PARAPET**: Elevation marker at the top left.
- ELEV=100'-0" F.F.**: Elevation marker at the bottom left.
- North Arrow**: Located in the top right corner.

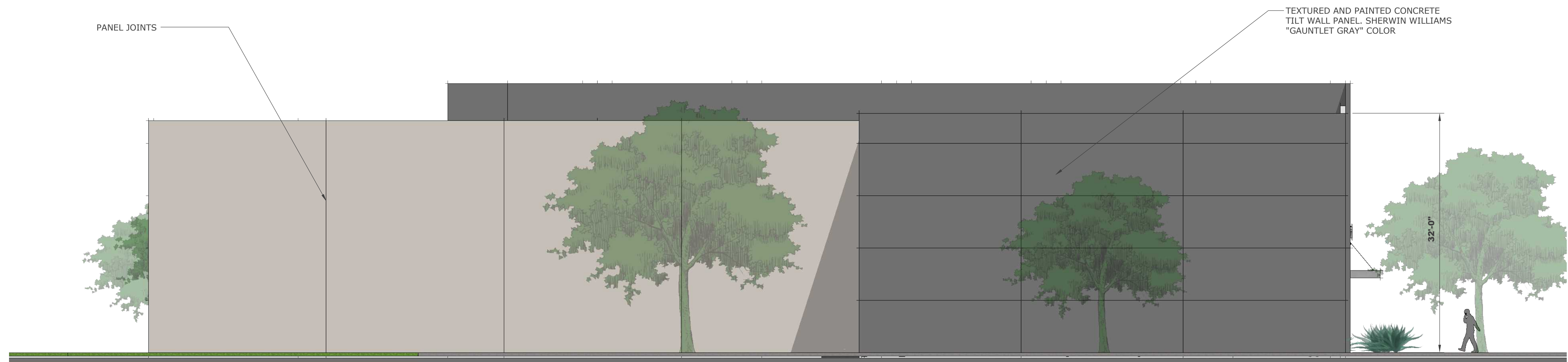


**BUILDING A - NORTH ELEVATION**

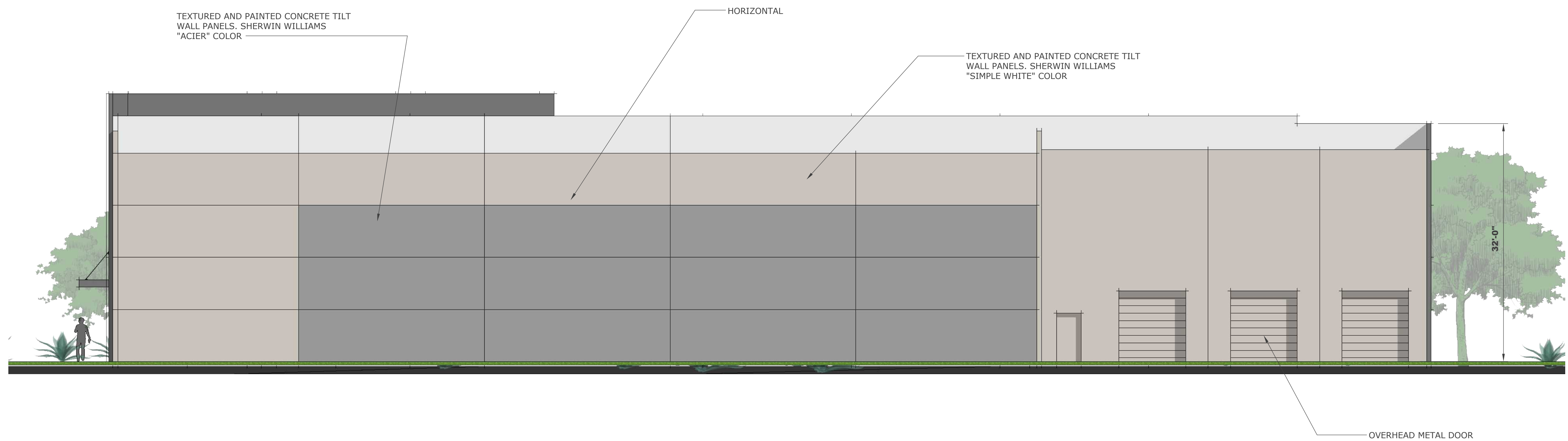


**BUILDING A - EAST ELEVATION**

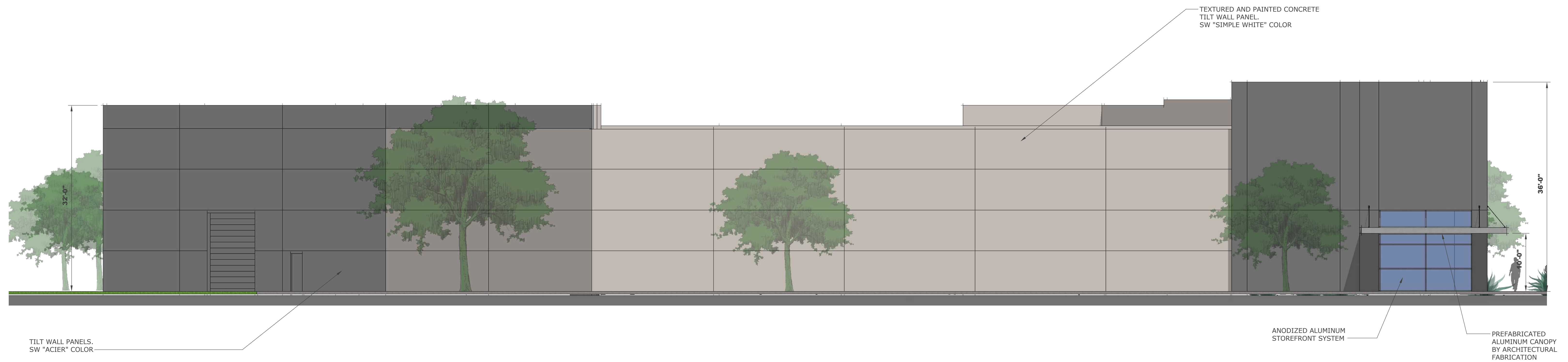




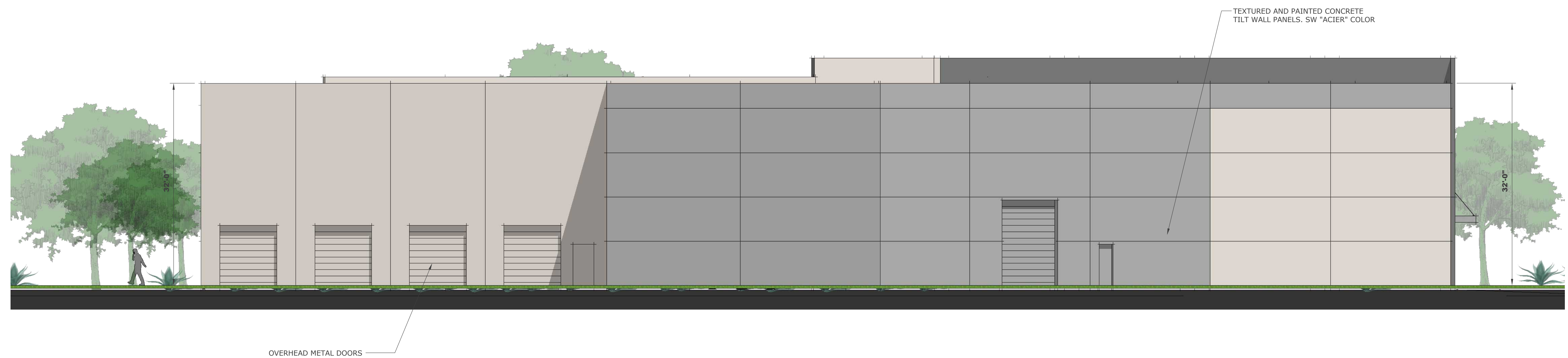
**BUILDING A - SOUTH ELEVATION**



**BUILDING A - WEST ELEVATION**

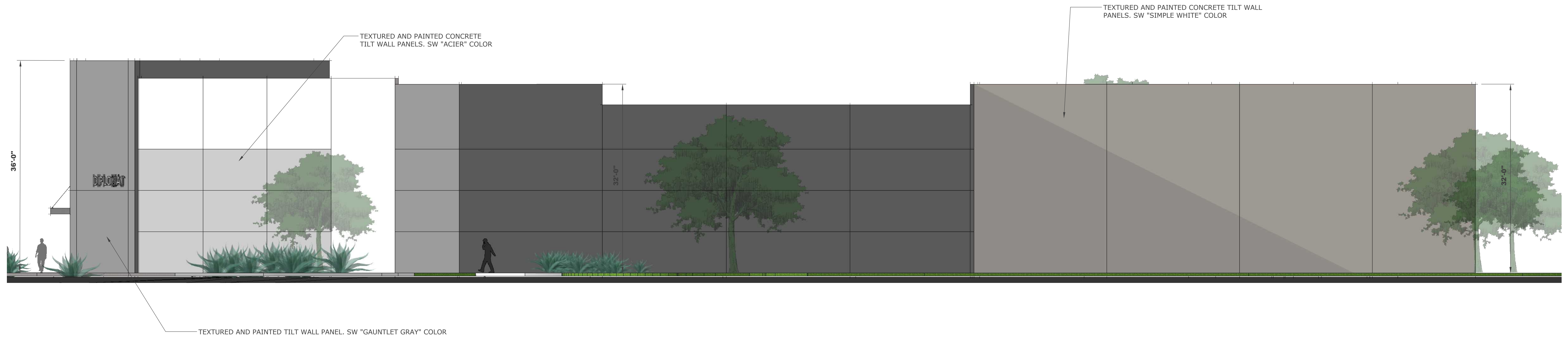


**BUILDING B - SOUTH ELEVATION**

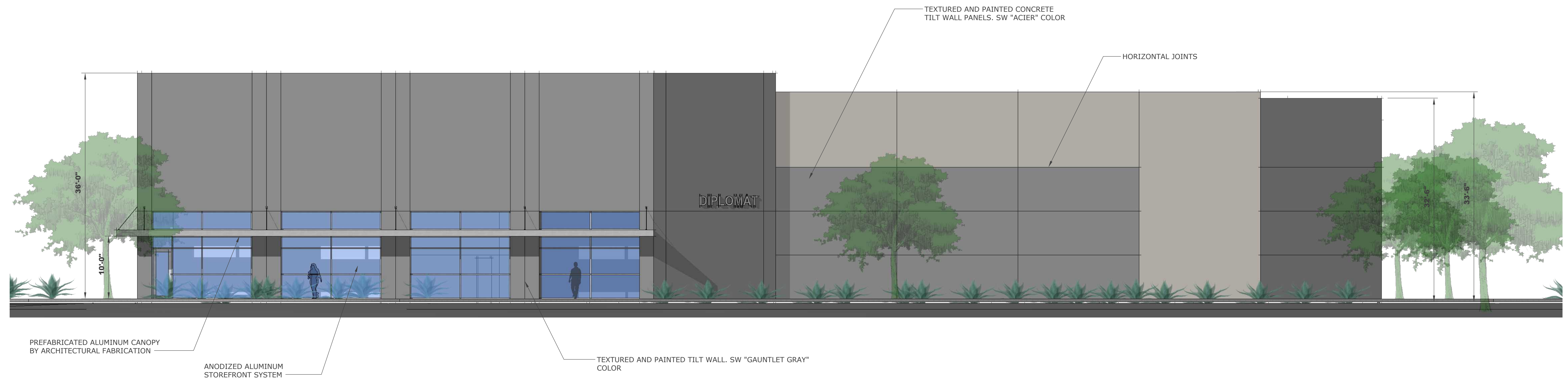


**BUILDING B - WEST ELEVATION**





**BUILDING B - NORTH ELEVATION**



**BUILDING B - EAST ELEVATION**