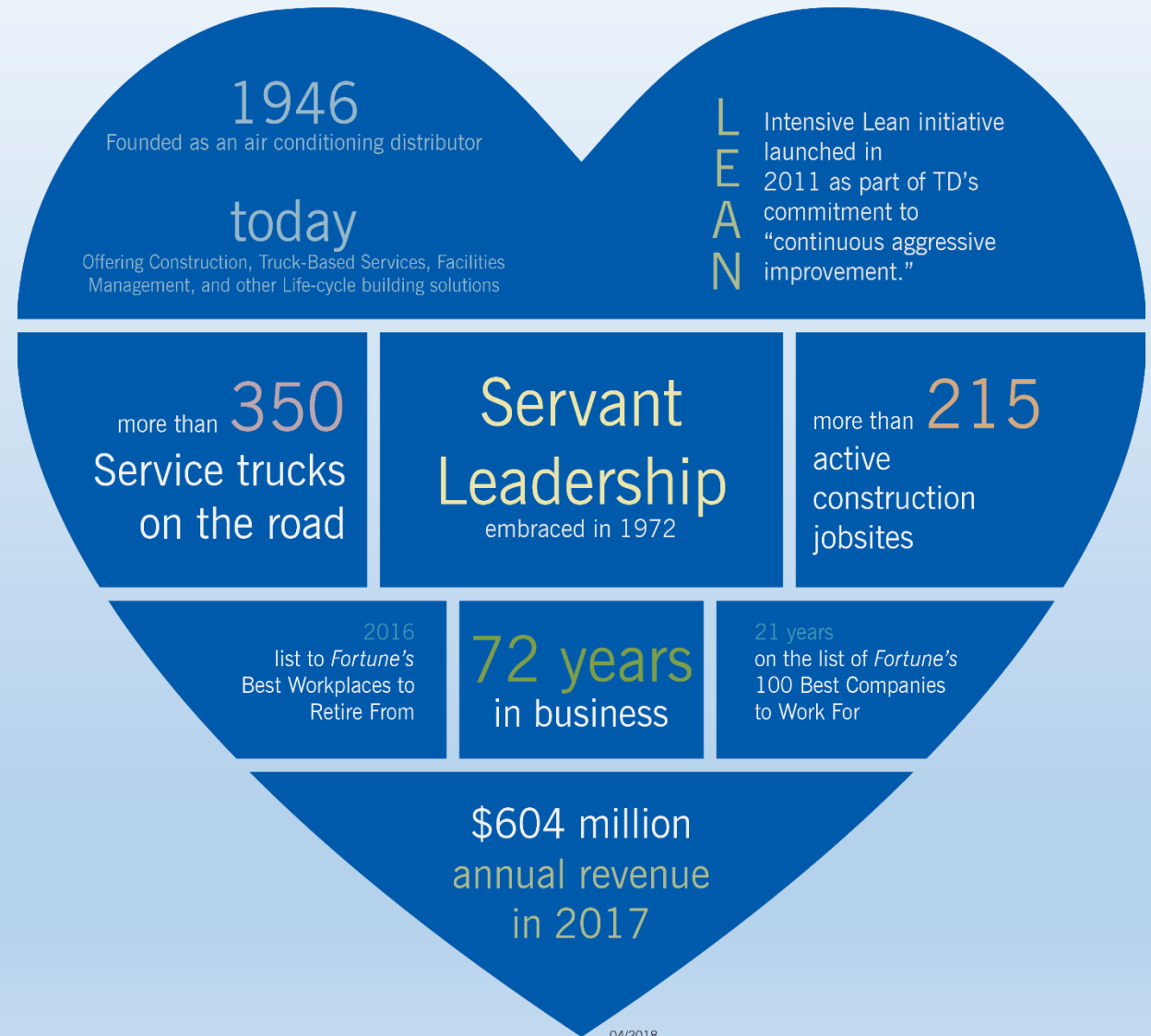


TDIndustries, Inc. as a Texas Enterprise Project



TDIndustries, Inc.

- Founded in 1946 as an air-conditioning distributor in Dallas, Texas by visionary Jack Lowe, Sr., TDIndustries has grown to be a premier construction and facilities services provider.
- Employee owned
- Headquartered at 13850 Diplomat Drive in City Council District 1
- Employs over 2,000 people at seven locations
- Annual revenue of \$604 Million
- Recognized in Fortune Magazine's list of the "100 Best Companies to Work For" 21 years in a row



Texas Enterprise Project

The Texas Enterprise Zone Program (“TEZ”) is designed for local communities to partner with the State of Texas to promote job creation/retention and significant private investment. The TEZ designation will allow TDIndustries a potential refund of **State** sales and use taxes (**not local**) on qualified expenditures of up to \$1,250,000 million over 5 years based on its capital investment and meeting any State workforce requirements. The State may grant a potential refund of \$2,500 for each of the new and retained employees, up to the maximum amount of 500 employees.

The City of Farmers Branch receives an allotment of 6 potential Enterprise Project designations every State biennium. Biennium 2018-2019 commenced on September 1, 2017. If this Enterprise Project designation is approved, the City will have 5 designations remaining for the remainder of this State biennium, ending on August 31, 2019.

TDIndustries, Inc. applied for the Texas Enterprise Zone grant (State of Texas)

- TDIndustries anticipates investing approximately **\$5.8M** at its Farmers Branch, Texas headquarters and construction staging prefabrication facility.
- Of that, **\$3.8M** will be devoted to updated software licenses and an Enterprise Resource Planning software system to streamline information sharing and administrative processes across the organization.
- In support of its prefabrication manufacture processes, TDIndustries intends to not only finance robotic welders for an assembly operation expansion and automation project but also invest **\$2M** on upgraded machinery and equipment to include two spot welders, wrapping machine, and hydraulic cutting machine.
- Employs 376 Program-qualified employees at the Farmers Branch facility and commits to retain the existing level of employment