



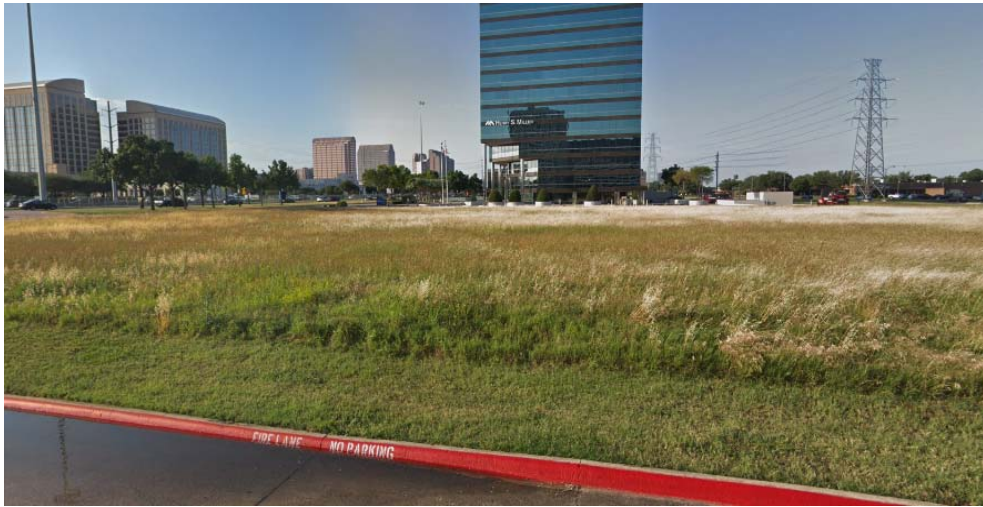
**FARMERS
BRANCH**

City Council

November 27, 2018

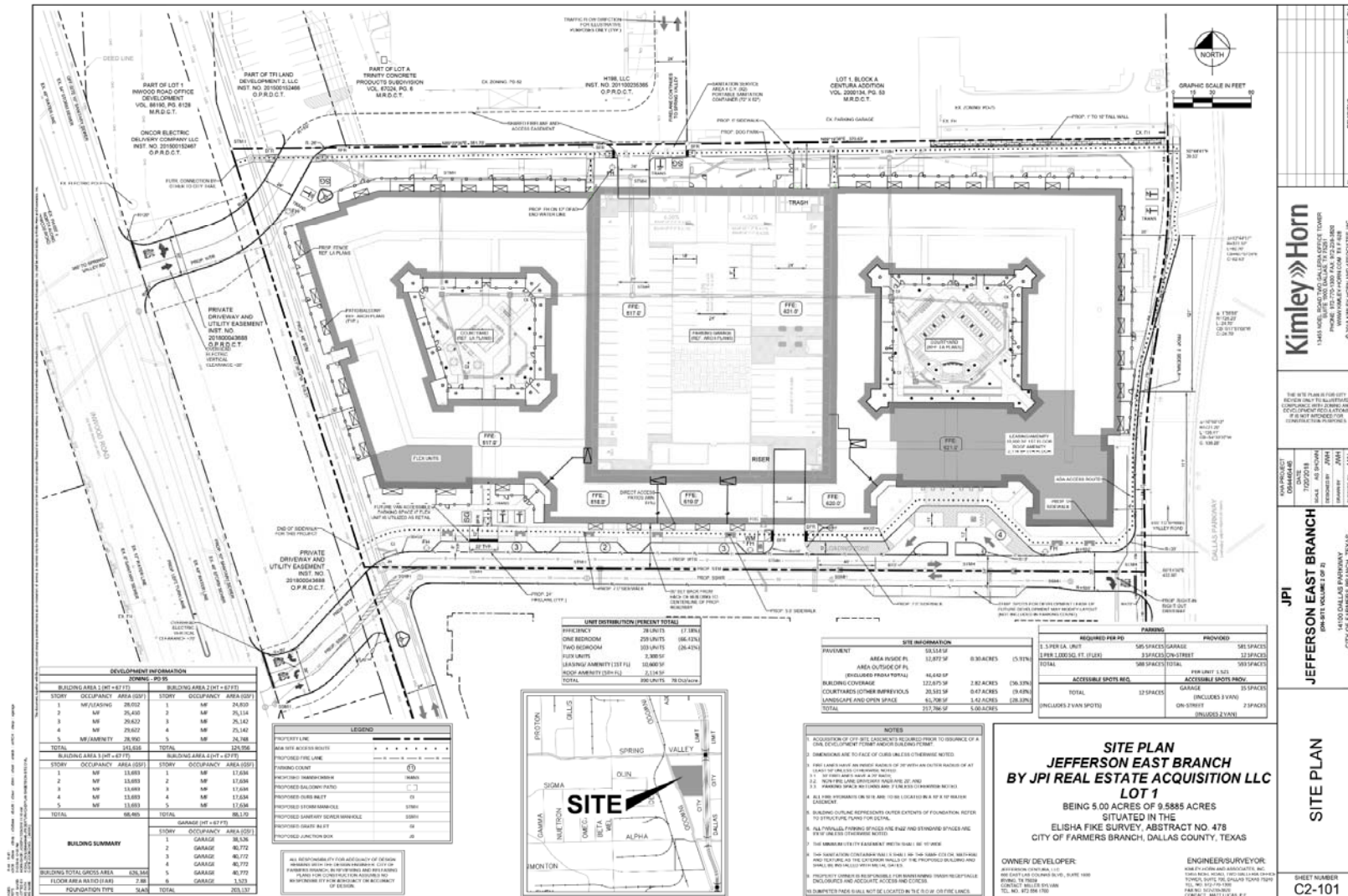
Detailed Site Plan – 14155 Dallas North Parkway



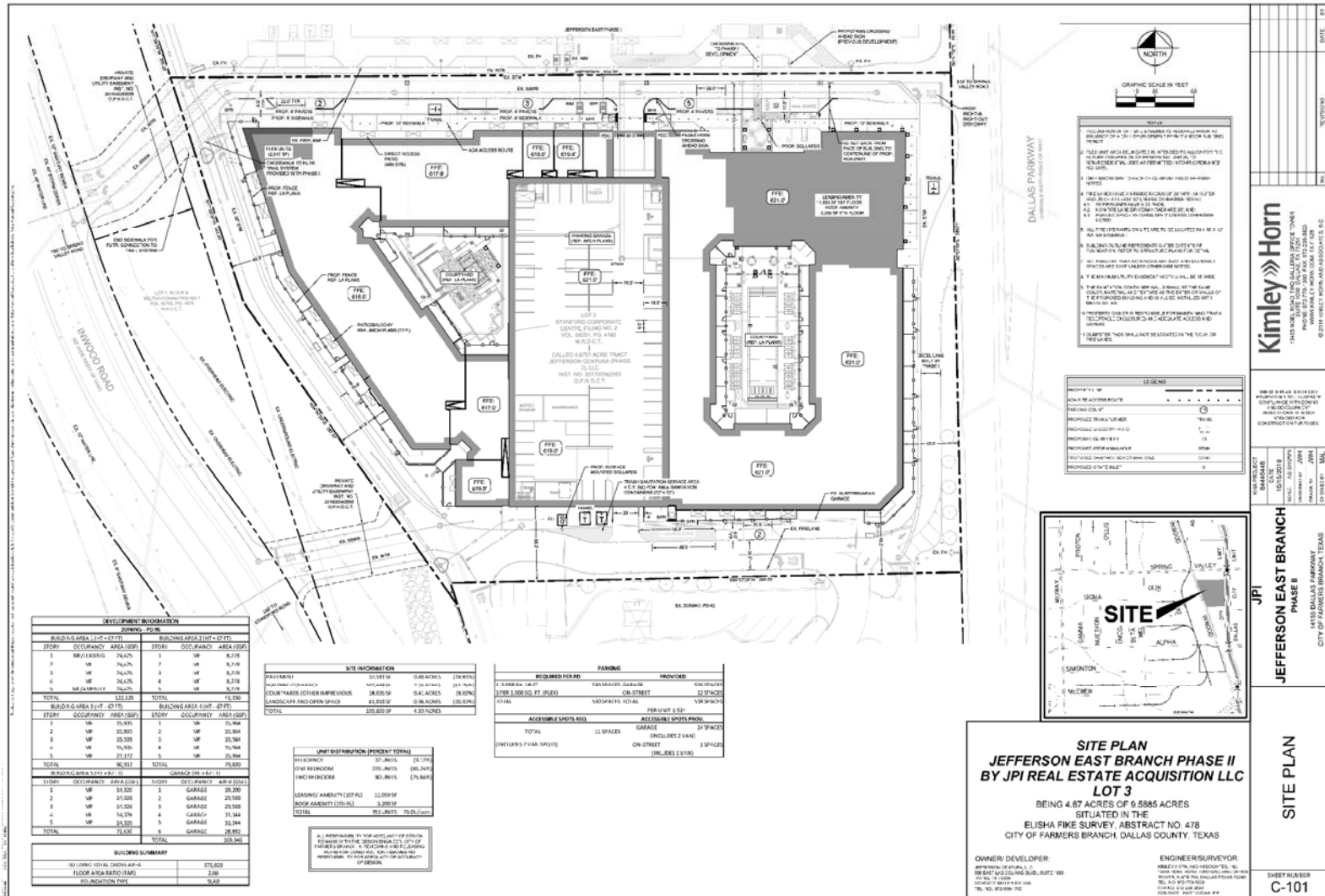




Detailed Site Plan – 14175 Dallas North Parkway (Phase 1)



Proposed Detailed Site Plan



Proposed Landscape Plan Rendering



SITE PLAN LEGEND

- A** FOUNDATION PLANTING (SHRUBS/GC)
- B** PARKING GARAGE ENTRANCE
- C** STREET TREES (TYP)
- D** FLEX UNIT SPACE
- E** PRIVATE YARDS
- F** PARALLEL PARKING STALLS
- G** LEASING OFFICE ENTRANCE/PLAZA
- H** POOL COURTYARD (7,533 SF)
 - WET DECK
 - POOL CHAISE LOUNGES
 - DINING TABLES AND SEATING WITH UMBRELLAS
 - OUTDOOR KITCHEN
- I** SECONDARY AMENITY COURTYARD (5,723 SF)
 - OUTDOOR KITCHEN
 - TV WITH SOFT SEATING
 - FIRE PIT WITH SOFT SEATING
 - OPEN NON-PROGRAMMED AREA (ARTIFICIAL TURF)
 - DINING TABLES, SEATING, AND UMBRELLAS
- J** 10' SIDEWALK
- K** FUTURE GREENBELT SYSTEM (BY OTHERS)

DALLAS PARKWAY

Proposed Building Elevations



North view (internal drive)

East view (Dallas North Parkway)

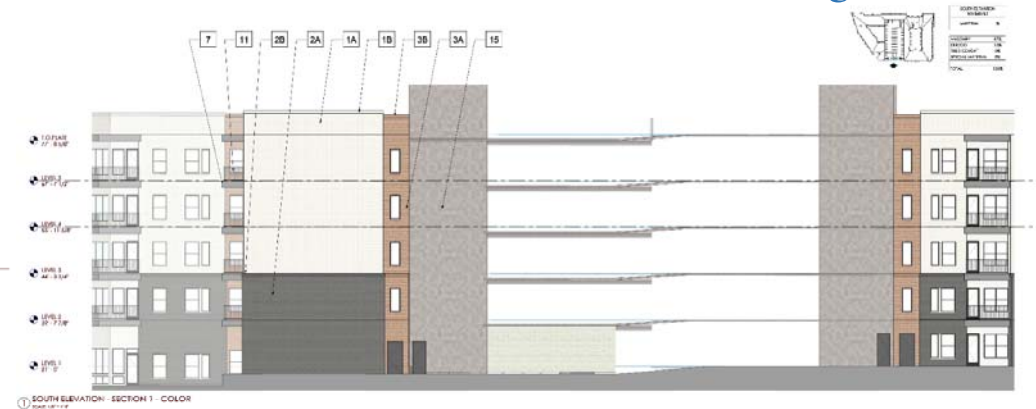


Proposed Building Elevations

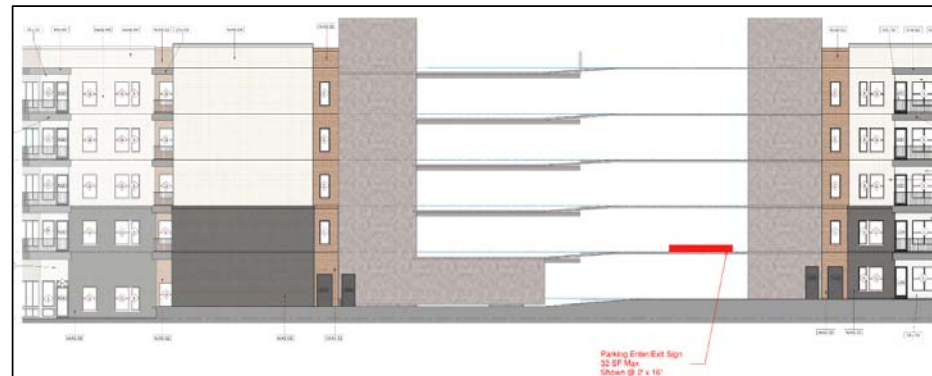
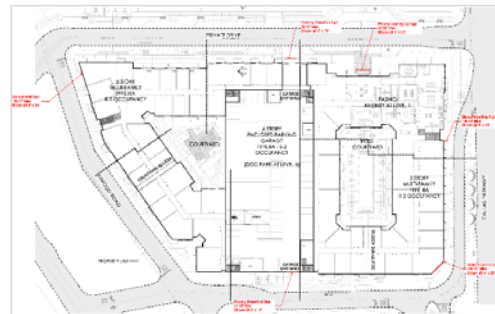


West view (Inwood Road)

South view (adjacent office bldg.)



Proposed Signs



Proposed Detailed Site Plan

