



FARMERS
BRANCH

Smoking Ordinance Review

City Council Study Session
November 27, 2018



TABLE OF CONTENTS

- Background
- Current City Regulations



FARMERS
BRANCH



Background

Secondhand Smoke



FARMERS
BRANCH



Secondhand Smoke

- What Is Secondhand Smoke?
 - Secondhand smoke is smoke from burning tobacco products, such as cigarettes, cigars, or pipes.
 - Secondhand smoke also is smoke that has been exhaled, or breathed out, by the person smoking.
 - Tobacco smoke contains more than 7,000 chemicals, including hundreds that are toxic and about 70 that can cause cancer.
- Why is it dangerous?
 - There is no risk-free level of secondhand smoke exposure; even brief exposure can be harmful to health.
 - Since 1964, approximately 2,500,000 nonsmokers have died from health problems caused by exposure to secondhand smoke.
 - Separating smokers from nonsmokers, opening windows, or using air filters does not prevent people from breathing secondhand smoke.

What are the health effects of secondhand smoke?

CHILDREN

- Ear infections
- More frequent and severe asthma attacks
- Respiratory symptoms (for example, coughing, sneezing, and shortness of breath)
- Respiratory infections (bronchitis and pneumonia)
- A greater risk for sudden infant death syndrome (SIDS)

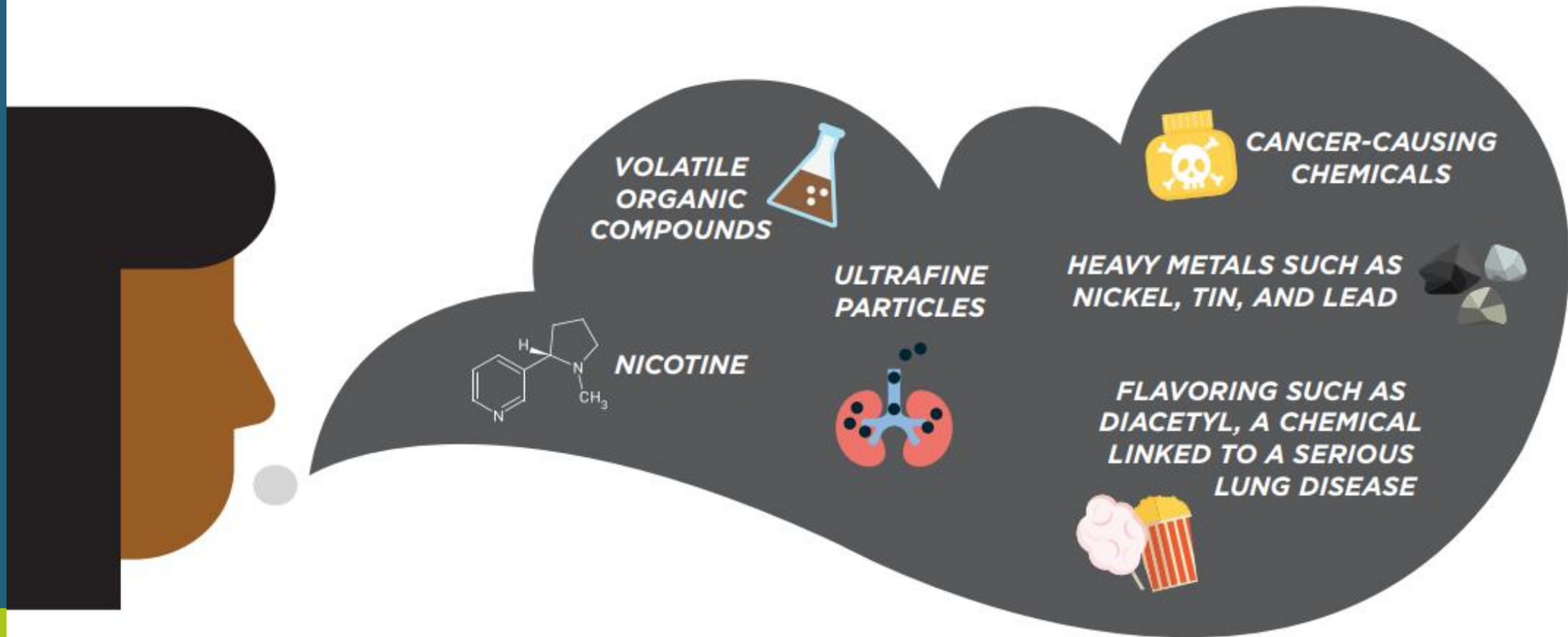
ADULTS (NONSMOKERS)

- Heart disease
 - For nonsmokers, breathing secondhand smoke has immediate harmful effects on the heart and blood vessels.
 - It is estimated that secondhand smoke caused nearly 34,000 heart disease deaths each year during 2005–2009 among adult nonsmokers in the United States.
- Lung cancer
 - Secondhand smoke exposure caused more than 7,300 lung cancer deaths each year during 2005–2009 among adult nonsmokers in the United States.
- Stroke

Secondhand Smoke

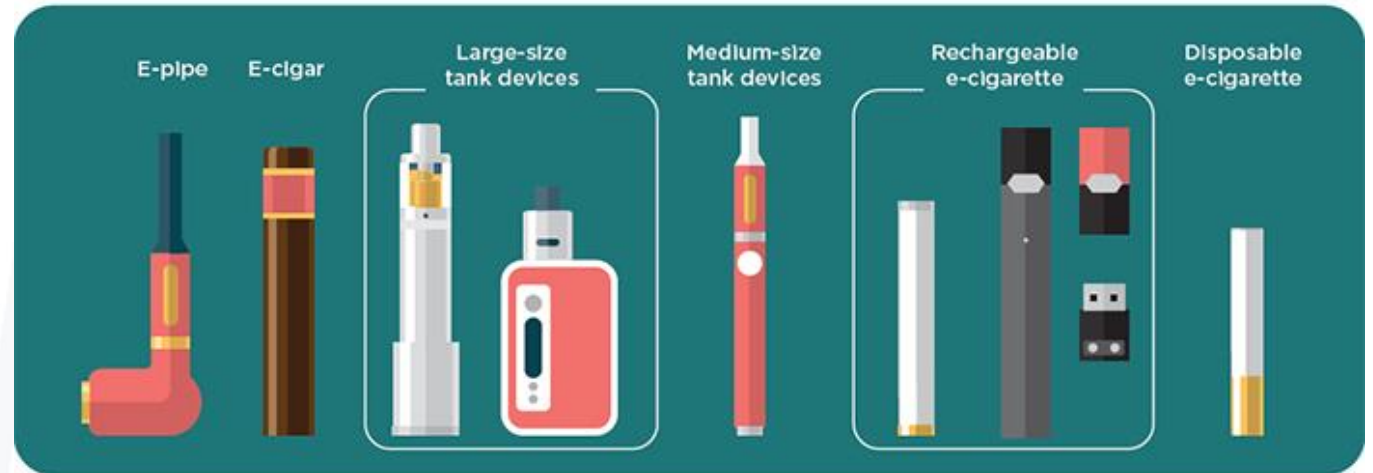
- There is NO risk-free level of secondhand smoke exposure; even **brief** exposure can be harmful to health.

What's in Electronic Cigarettes?



E-Cigarettes and Vaping

- “E-cigs,” “e-hookahs,” “mods,” “vape pens,” “vapes”
- They may look like regular cigarettes, cigars, or pipes. Others resemble pens, USB sticks, and other every day items.
- E-cigarettes produce an aerosol by heating a liquid that usually contains nicotine, flavorings, and other chemicals that help to make the aerosol.
- Bystanders can also breathe in this aerosol when the user exhales into the air.
- E-cigarettes may benefit adult smokers who are not pregnant if used as a substitute for regular cigarettes and smoked tobacco products.
- **E-cigarettes are not safe for youth, young adults, pregnant women, or adults who do not currently use tobacco products.**



E-CIGARETTES ARE NOW THE MOST COMMONLY USED TOBACCO PRODUCT AMONG U.S. YOUTH.

IN THE U.S.,
YOUTH ARE
MORE LIKELY
THAN ADULTS
TO USE
E-CIGARETTES



4.3%

MIDDLE SCHOOL
STUDENTS

In 2016, more than
2 MILLION

U.S. middle and high school
students used e-cigarettes in
the past 30 days, including:

11.3%

HIGH SCHOOL
STUDENTS



Current Regulations

City of Farmers Branch Ordinance



FARMERS
BRANCH



Current Farmers Branch Regulations



City Facilities (Indoor)

- Smoking is **prohibited** in any public conference room, meeting room, or service area of any facility owned, operated, or managed by the city



Retail Establishments

- Smoking is **prohibited**, with minor exceptions:
- Facility has less than 500 ft² of public showroom*
- There may be designated smoking areas*
- Cigar bars*



Other Enclosed Facilities

- Smoking is **prohibited** in theaters, libraries, and museums
- Office buildings not open to the general public are **not required** to prohibit smoking



City Parks

- Smoking is permitted in city parks, with exceptions:
- It is **prohibited** at any city-owned or city-operated athletic complex or Don Showman Park
- The ban includes athletic fields, dugouts, team benches, spectator areas, restrooms, concession stands, and all of Don Showman Park including the areas surrounding the recreation center and swimming pool.*

Farmers Branch Restaurants

- May have smoking areas
- Must have a written smoking policy
- Must have nonsmoking areas that meet the following requirements, if feasible:
 - Separated by four feet of contiguous floor space
 - Be ventilated and situated so air from the smoking area is not drawn into or across the nonsmoking area
 - Be clearly designated
 - Have ash trays at the perimeter
- Exceptions to nonsmoking area requirements:
 - Establishments with indoor seating for less than 50 patrons
 - Bars
 - A physically separated bar area of a food service establishment



City of Dallas Smoking Regulations

Burning Tobacco Products

- Prohibited in parks (excluding revenue-generating parks such as Fair Park and the Zoo)
- Violation: \$200 fine
- A person commits an offense if he smokes:
 - (1) in any indoor or enclosed area in the city;
 - (2) within 15 feet of any entrance to an indoor or enclosed area in the city;
 - (3) in any area designated as nonsmoking by the owner, operator, or person in control of the area and marked with a no smoking sign complying with Section 41-3; or
 - (4) on park property.

E-Cigarettes

- No regulations



Questions?