

NORTH ELEVATION		
MATERIALS	AREA (SQ. FT.)	PERCENTAGE
MASONRY	3,817 SQ. FT.	77%
WINDOWS / DOORS	1,132 SQ. FT.	23%
METAL WALL PANELS	-	-
TOTAL	4,949 SQ. FT.	100%

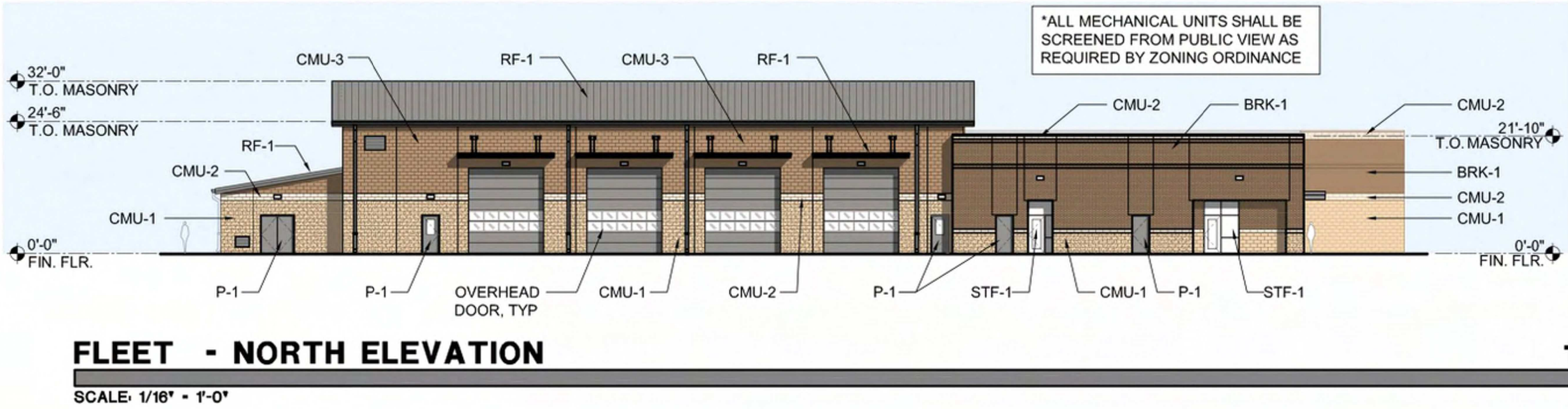
WEST ELEVATION		
MATERIALS	AREA (SQ. FT.)	PERCENTAGE
MASONRY	2,039 SQ. FT.	77%
WINDOWS / DOORS	278 SQ. FT.	10%
METAL WALL PANELS	335 SQ. FT.	13%
TOTAL	2,652 SQ. FT.	100%

EAST ELEVATION		
MATERIALS	AREA (SQ. FT.)	PERCENTAGE
MASONRY	2,200 SQ. FT.	100%
WINDOWS / DOORS	-	-
METAL WALL PANELS	-	-
TOTAL	2,200 SQ. FT.	100%

SOUTH ELEVATION		
MATERIALS	AREA (SQ. FT.)	PERCENTAGE
MASONRY	3,863 SQ. FT.	77%
WINDOWS / DOORS	1,134 SQ. FT.	23%
METAL WALL PANELS	-	-
TOTAL	4,997 SQ. FT.	100%

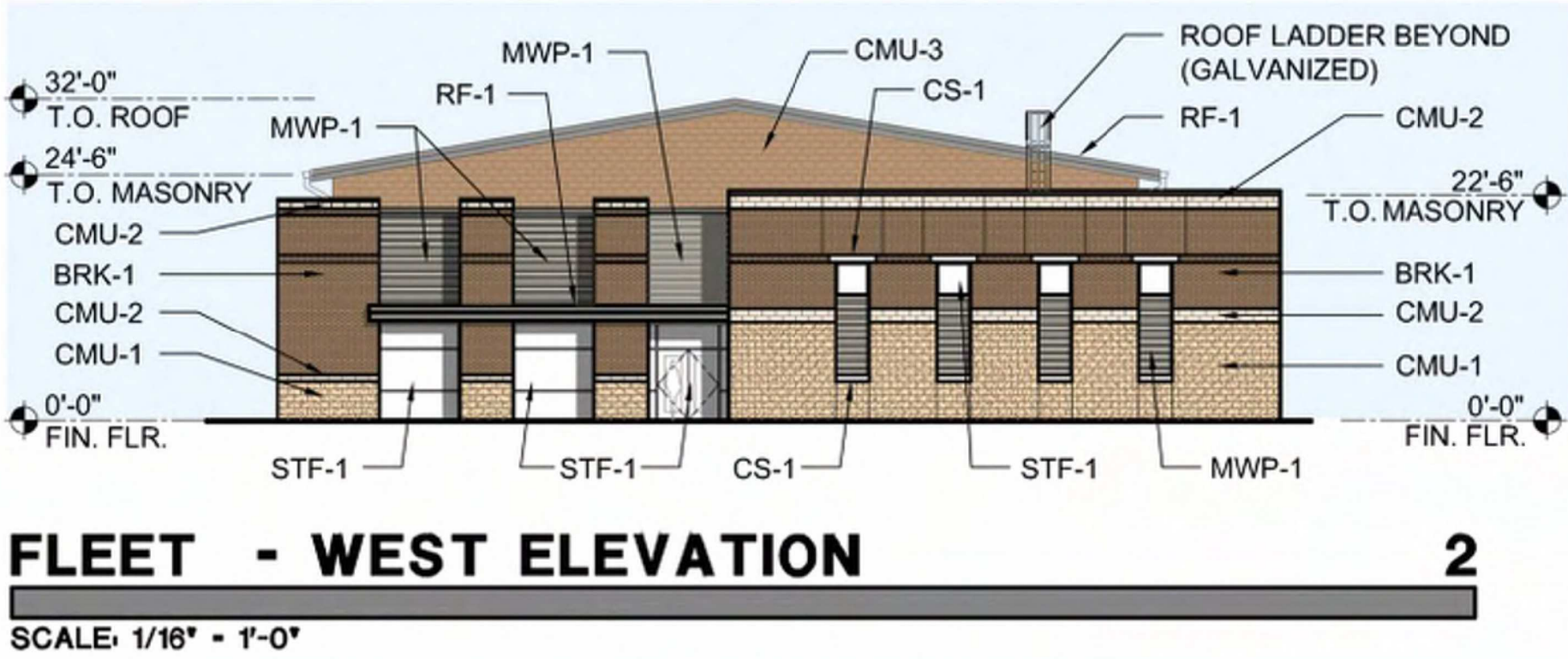
EXTERIOR FINISH LEGEND

CMU - 1 (TEXTURED)	MASONRY
MANUFACTURER:	TEXAS BUILDING PRODUCT
COLOR:	'#24 APPALLOOSA'
CMU - 2 (GROUND-FACE)	MASONRY
MANUFACTURER:	TEXAS BUILDING PRODUCT
COLOR:	'BLANCO'
CMU - 3 (SMOOTH-FACE)	MASONRY
MANUFACTURER:	TEXAS BUILDING PRODUCT
COLOR:	'SONORA RED II'
BRK - 1	BRICK
MANUFACTURER:	ACME BRICK
COLOR:	'ROYAL BIRKDALE'
CS - 1	CAST STONE
MANUFACTURER:	ADVANCED ARCHITECTURAL STONE
COLOR:	'CLASSIC WHITE'
MWP - 1	METAL WALL PANEL
MANUFACTURER:	BERRIDGE MANUF. CO.
MODEL:	HR-16 (22 GAUGE)
COLOR:	'ZINC GREY'
RF - 1	STANDING SEAM ROOF PANEL
MANUFACTURER:	BERRIDGE MANUF. CO.
MODEL:	CEE-LOCK (24 GAUGE)
COLOR:	'ZINC GREY'
STR - 1	STANDING SEAM ROOF PANEL
MANUFACTURER:	KAWNEER
MODEL:	TRIFAB 451T - CENTER GLAZED
COLOR:	CLEAR ANODIZED ALUMINUM
P - 1	PAINT (EXTERIOR METAL DOORS & FRAMES)
MANUFACTURER:	SHERWIN WILLIAMS
COLOR:	'GAUNTLET GREY SW7019'



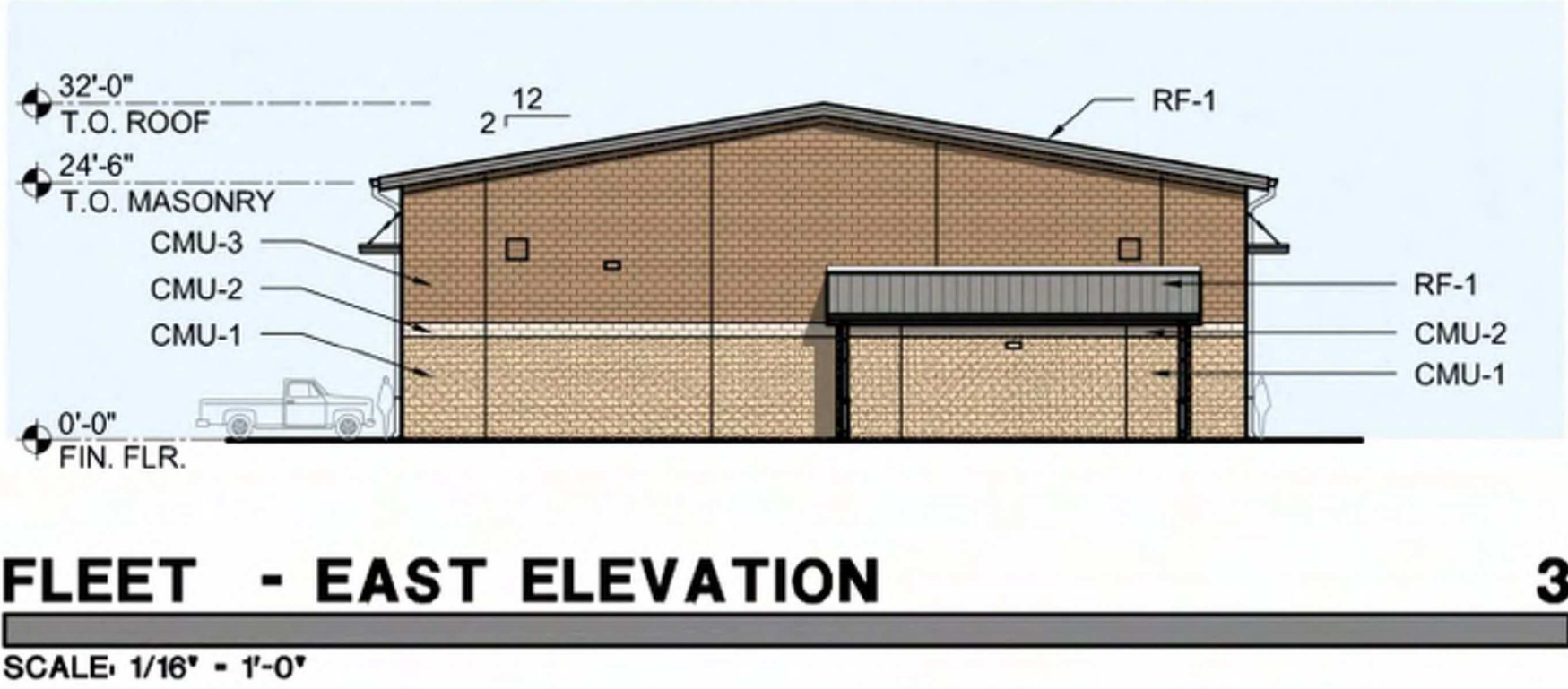
FLEET - NORTH ELEVATION

SCALE: 1/16" = 1'-0"



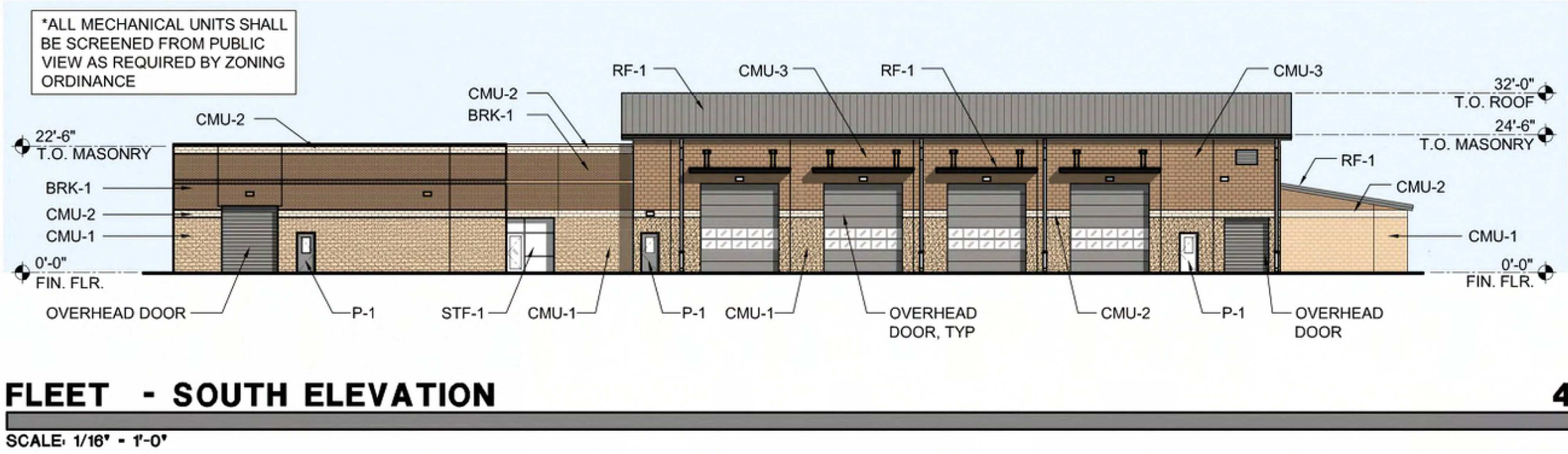
FLEET - WEST ELEVATION

SCALE: 1/16" = 1'-0"



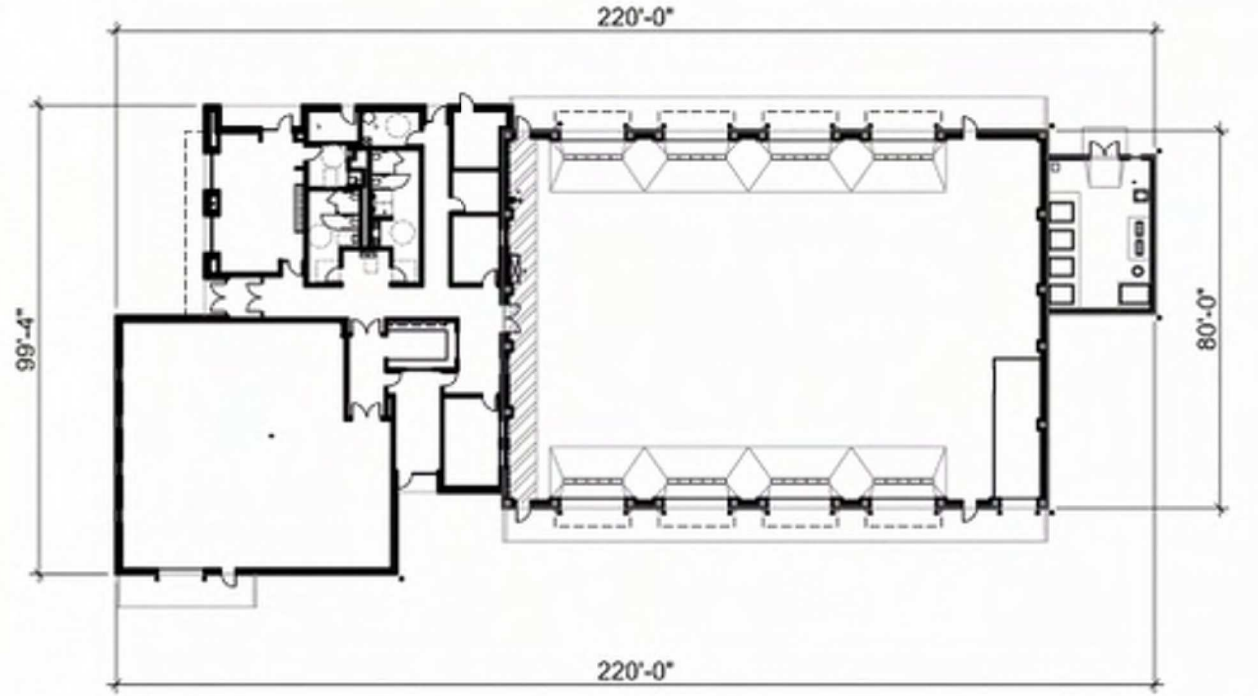
FLEET - EAST ELEVATION

SCALE: 1/16" = 1'-0"



FLEET - SOUTH ELEVATION

SCALE: 1/16" = 1'-0"



FLOOR PLAN

SCALE: 1:40



LOCATION MAP

SCALE: N.T.S.

GENERAL NOTES:

- DUMPSTER ENCLOSURE UTILIZES CMU-1 MASONRY THROUGHOUT WITH MWP-1 METAL PANELS ON THE GATE ENCLOSURES.
- ALL MECHANICAL / HVAC UNITS ON ROOF SHALL BE SCREENED FROM PUBLIC VIEW AS REQUIRED BY ZONING ORDINANCE.

FARMERS BRANCH
SERVICE CENTER -
KEENAN BRIDGE
13333 DAVIS



LOT 1, BLOCK A
1801 VALLEY VIEW ADDITION
VOL 97161, PG.167
M.R.D.C.T.

OWNER: CITY FARMERS BRANCH
ADDRESS: 13000 WILLIAM DODSON PARKWAY
FARMERS BRANCH, TX 75234
PHONE: 972.247.3131

quorum

Design. Spaces. People.
707 W. Vickery Blvd. #101
Fort Worth, Texas 76104
ph. (817) 738-8095
fx. (817) 738-9524
www.qarch.com

CONTACT DAVID DUMAN, AIA