

Alpha Road Connector (Bella Lane)

City Council

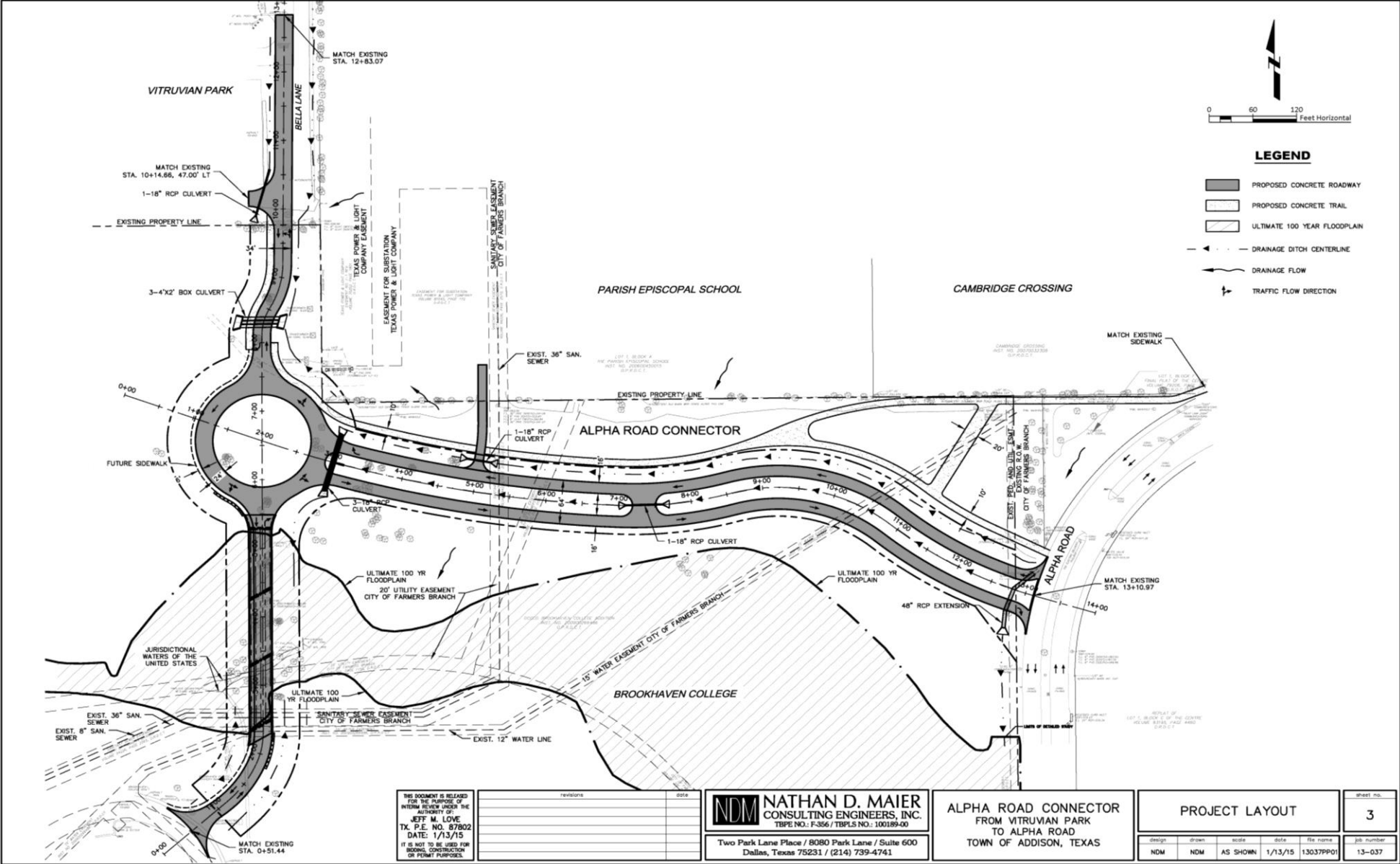
May 7, 2019



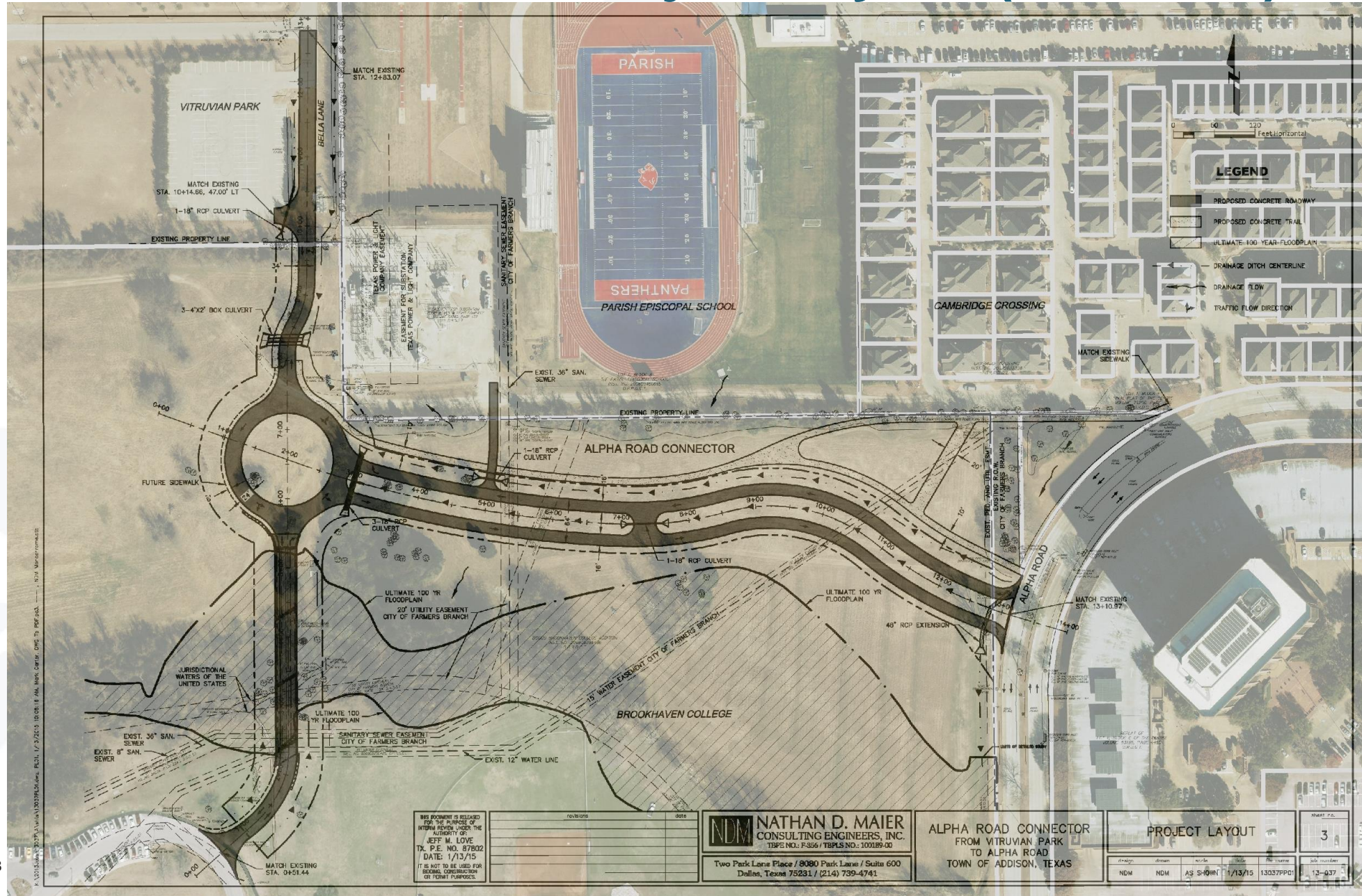
FARMERS
BRANCH



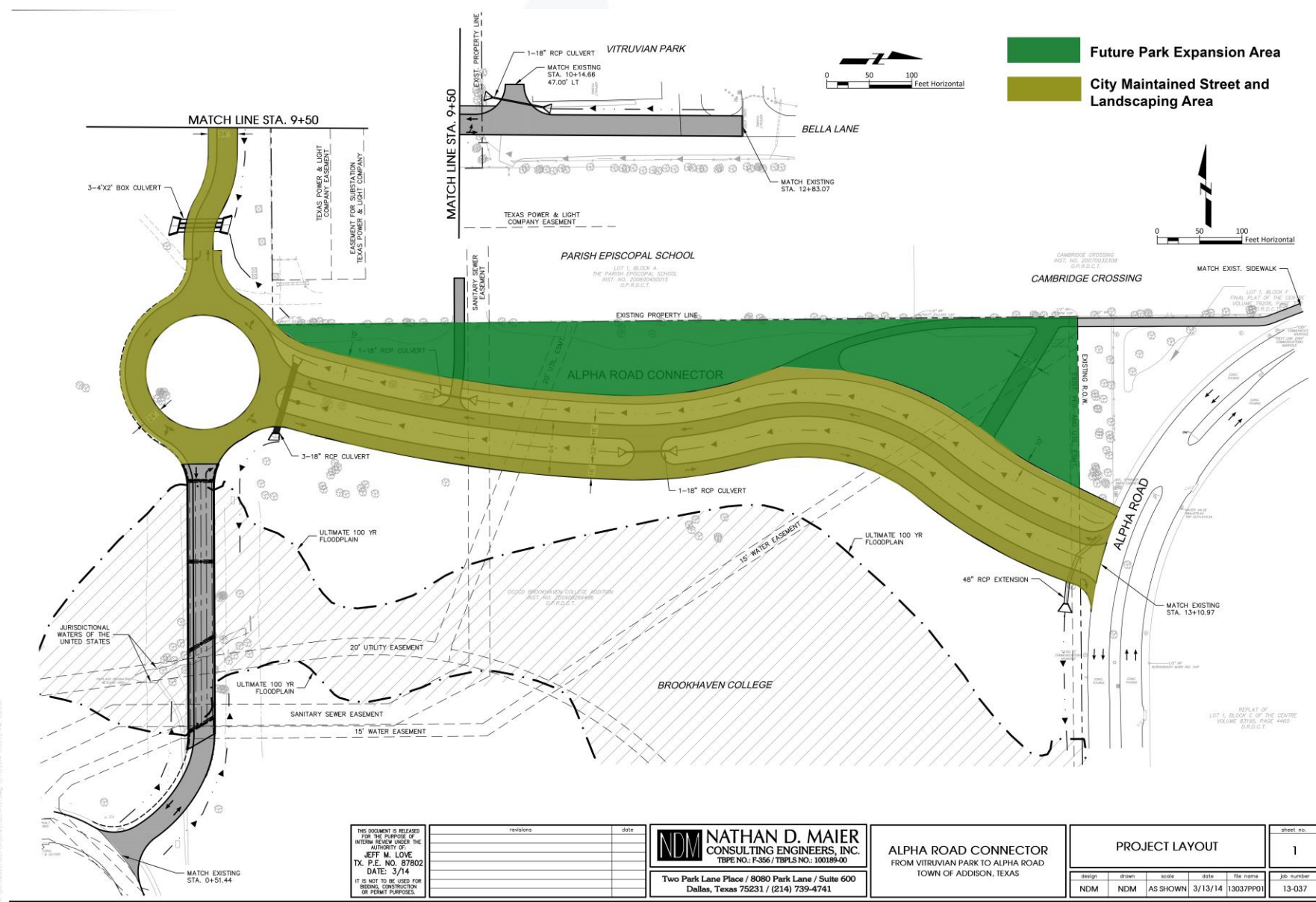
Alpha Road Connector Project Layout (Jan 2015)



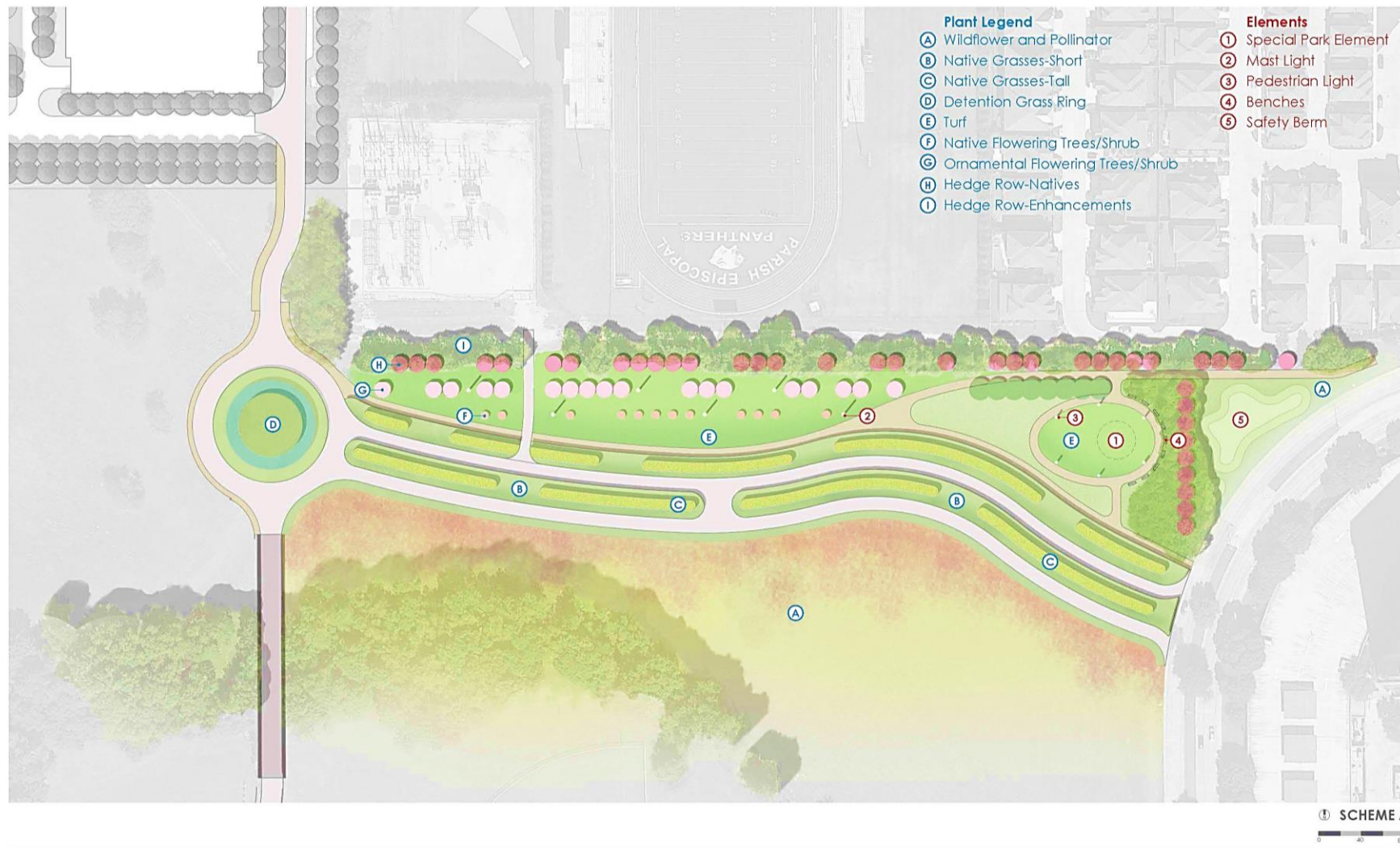
Alpha Road Connector Project Layout (Jan 2015)



Future Park and Street Maintenance



Initial Park Design Concepts



Initial Park Design Concepts



Initial Park Design Concepts



Cambridge Crossing Neighborhood Concerns

1. City of FB to assume maintenance obligation for Sigma Road section
2. Locate Bella Lane connection to Alpha Road as far south as possible from neighborhood
3. Design a “right-in / right-out” for the Bella Lane/Alpha Road intersection (no median opening)
4. Design Bella Lane as divided 2 lane street (1 lane in each direction); no future widening
5. 20 MPH limit, with use of speed tables, curves, traffic circle, speed limit signs
6. Prohibit trucks exceeding $\frac{3}{4}$ -ton capacity
7. Prohibit use for construction vehicles
8. Obtain assurance from City for support for:
 - a. Perimeter fencing around CC
 - b. Adding speed tables at CC entrances from Alpha Road and Sigma Road
 - c. Allow signs along Sigma Road regarding private property and parking
 - d. Gating both Alpha Road and Sigma Road entrances into CC
9. Oncor access from Bella Lane (instead of through CC neighborhood)

A decorative graphic on the left side of the slide featuring stylized blue leaves of various shapes and sizes, arranged along a diagonal branch. The background is a solid dark blue, with a light blue horizontal bar at the top and a light green horizontal bar at the bottom.

Discussion & Direction