

Mindspark Montessori Experience of Mercer Crossing

Presented by Jovan and Byron Wells



What's the plan for Mindspark Montessori Experience?



What is the Mindspark Montessori Experience?



Mindspark Montessori Experience sparks curiosity and imagination in young minds. We provide a STEM-focused, age-appropriate, interactive curricula taught by experienced teachers who are skilled at engaging all types of students in the learning process.

A decorative graphic in the top-left corner consisting of several thick, green, rounded rectangular bars of varying lengths and orientations, some pointing towards the center and others away from it.

How is the Mindspark Montessori Experience Different?

- We're trying to do something that has not been done before – create an early childhood program that is centered around a STEAM curriculum.
- Our curriculum is designed to instill a lifelong passion for learning, which will ultimately help students become top academic performers. It will also prepare them to take on higher level coursework in elementary school, which will lead to more advanced courses in high school, and eventually higher education opportunities.
- We have a rigorous process for selecting teachers and staff members, ensuring that our educators are fully committed to our curricula and to our students. We hold them to a higher standard of performance and reward them for achieving their goals.

Who's Behind Mindspark Montessori Experience?

Dr. Jovan Wells

Innovative, collaborative and results-oriented educator with more than 20 years experience.



Garland ISD Chief Academic Officer.

Local, state and national accolades while Principal of the School for Science and Engineering at Yvonne A. Ewell Townview Center:

2011 - #1 Best Public High School in America, Newsweek

2011 - #1 Best Public High School in America, The Washington Post

2012 - Intel School of Distinction Award

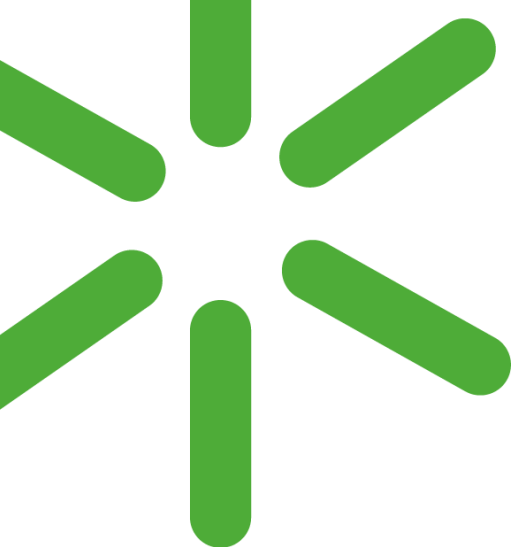
Associated with:

National Match and Science Initiative (NMSI)

Texas Instruments Foundation

American Montessori Society

Shelton School



Who's Behind Mindspark Montessori Experience?

I'm taking everything I've learned from more than 20 years of educational experience and am using it to develop an early childhood curriculum that may be applied to the most critical learning period of a child's life.

I want to do this right here in Farmers Branch.



Why this location?

- We live nearby and are active in this community.
- We want to launch this unique learning concept in a familiar and welcoming community.
- The site on Valley View Lane is close to residential neighborhoods and commercial sectors, making it convenient for parents to drop off and pick up students.



Mindspark Site



The land use plan for Mercer Crossing is a visual illustration of the proposed districts. The districts are proposed as shown in order to provide for a balanced and sustainable mix of land uses, which comes from a compatible mixture of residential and commerce uses in close proximity to each other.

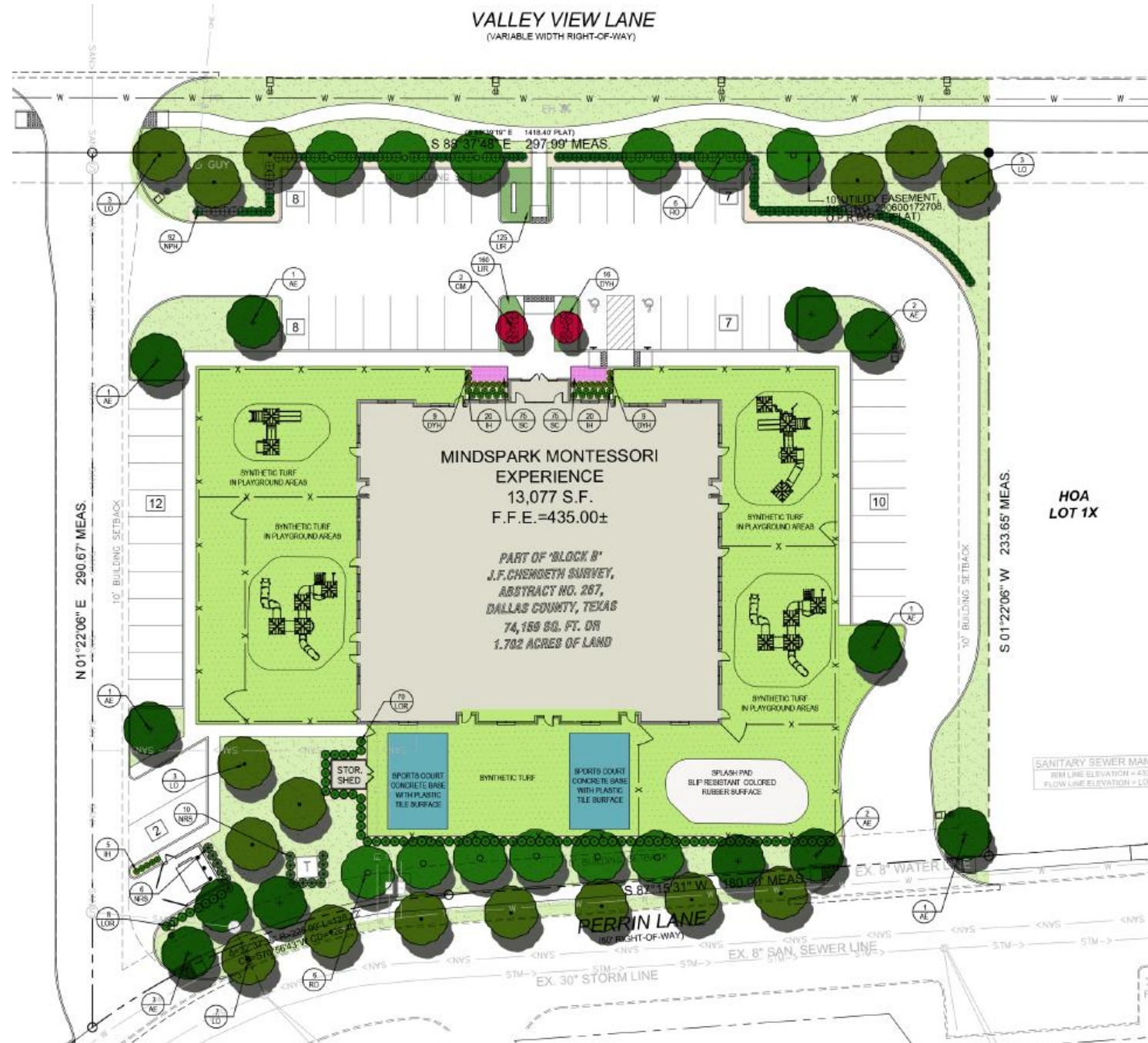
Land Uses	Acres	%	
Commerce / Hotel	45.3	17	
Multi-Family (tract 1 north of 635)	26	13.5	Not to exceed 1250 units
Multi-Family (tract 2 south of 635)	10		Not to exceed 500 units
Single Family	117.3	44	
Attached	8.1		Not to exceed 111 lots
Detached	109.2		
60 ft wide lots	17.6		Not to exceed 73 lots
50 ft wide lots	71.2		Not to exceed 323 lots
40 ft wide lots	18.9		Not to exceed 100 lots
School (potential site)	8.6	3.2	
Parks / Open Space	26.8	10	
Street ROW and miscellaneous	32.9	12.3	
TOTAL	266.9	100	

Development Districts	Acres	%
Urban Commerce	92.7	34.7
Urban Residential	174.2	65.3
TOTAL	266.9	100

~2,250 Households

There is currently no child care centers serving the Farmers Branch community west of 35E.

VALLEY VIEW LANE
(VARIABLE WIDTH RIGHT-OF-WAY)



Special Exception

PARKING IN FRONT

- SAFETY OF CHILDREN
- SECURITY OF CHILDREN'S PLAY AREA
- USE FUNCTIONALITY

SETBACK

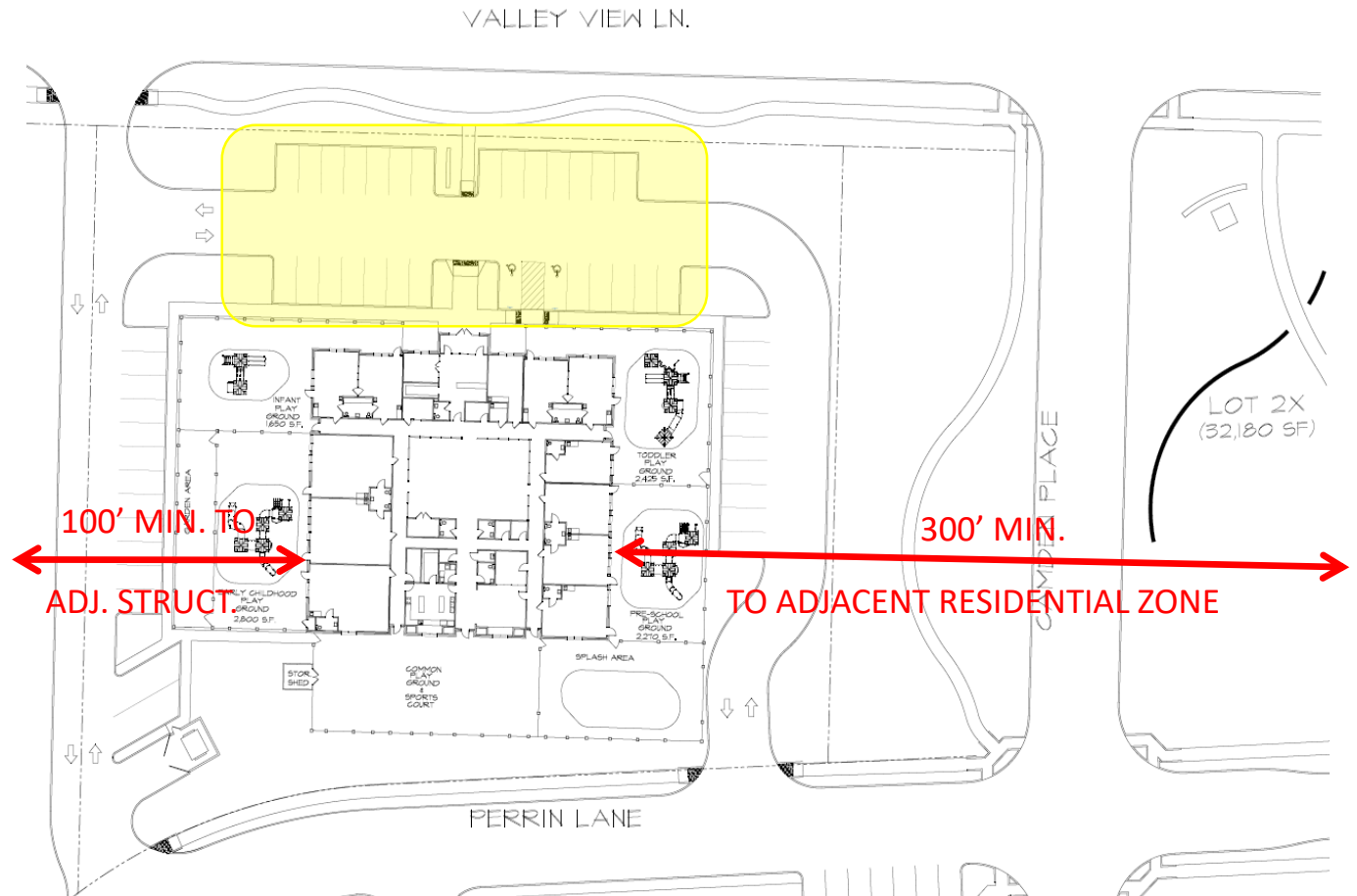
- DETERMINED BY PARKING AREA
- LARGE LOT PREVENTS STREETSCAPE
- DISTANCE FROM ADJACENT
- NOT RETAIL/RESTAURANT

FENESTRATION

- NOT RETAIL/RESTAURANT USE
- SECURITY OF CHILDREN

ROOF SLOPE

- USE STANDARD ROOF SLOPES
- SLOPES FIT SCALE OF BUILDING





April 12, 2019

Mrs. Jenifer Paz, AICP
Senior Planner
City of Farmer's Branch
13000 William Dodson Parkway
Farmers Branch, Texas 75234

Re: Planned Mindspark Montessori Experience School
Southwest Corner of Valley View Lane and Cambden Place – Farmer's Branch, Tx

Dear Jenifer:

I hope you are doing well.

Please let the letter serve as a notice from the developer of Mercer Crossing that we have reviewed the site plan and elevation for the Mindspark Montessori Experience School planned at the southwest corner of Valley View Lane and Cambden Place and are very supportive of their proposed project.

We feel like Mindspark Montessori will be a great addition to this community and provide the families in our various neighborhoods within Mercer Crossing a great place to take their kids for daycare and an early learning experience.

Please feel free to call me with any questions at (214) 287-9009 or via email at Mike@mooreland.com with any questions.

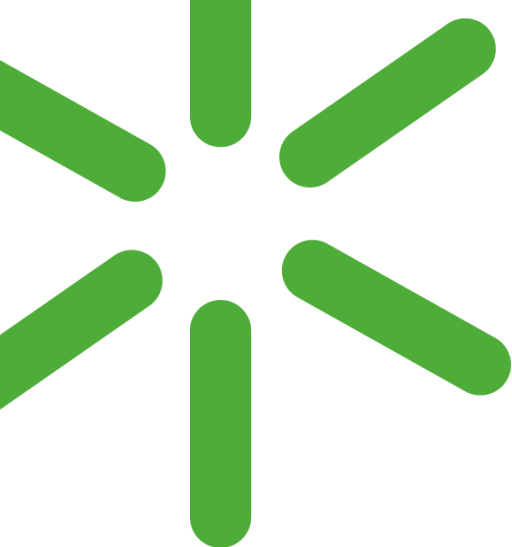
Very Truly,



Michael Beaty







FRONT ELEVATION



REAR ELEVATION



LEFT ELEVATION



RIGHT ELEVATION

