

NORTH ELEVATION MATERIAL CALCULATION		
MATERIAL	AREA (SF)	AREA (%)
BRICK	1139	88%
CEMENTITIOUS SIDING	149	12%
TOTAL	1288	100%

NORTH ELEVATION FENESTRATION CALCULATION			
LEVEL	FENESTRATION AREA (SF)	TOTAL LEVEL AREA (SF)	FENESTRATION AREA (%)
FIRST FLOOR	34	441	7%
SECOND FLOOR	41	550	7%
THIRD FLOOR	24	369	6%

NORTH

1" = 10'-0"



EAST ELEVATION MATERIAL CALCULATION		
MATERIAL	AREA (SF)	AREA (%)
BRICK	1047	40%
CEMENTITIOUS SIDING	1527	60%
TOTAL	2574	100%

EAST ELEVATION FENESTRATION CALCULATION			
LEVEL	FENESTRATION AREA (SF)	TOTAL LEVEL AREA (SF)	FENESTRATION AREA (%)
FIRST FLOOR	565	1363	44%
SECOND FLOOR	384	1499	21%
THIRD FLOOR	260	1006	26%

EAST

1" = 10'-0"



SOUTH ELEVATION MATERIAL CALCULATION		
MATERIAL	AREA (SF)	AREA (%)
BRICK	841	75%
CEMENTITIOUS SIDING	277	25%
TOTAL	1118	100%

SOUTH ELEVATION FENESTRATION CALCULATION			
LEVEL	FENESTRATION AREA (SF)	TOTAL LEVEL AREA (SF)	FENESTRATION AREA (%)
FIRST FLOOR	30	441	6%
SECOND FLOOR	100	550	18%
THIRD FLOOR	52	369	14%

SOUTH

1" = 10'-0"



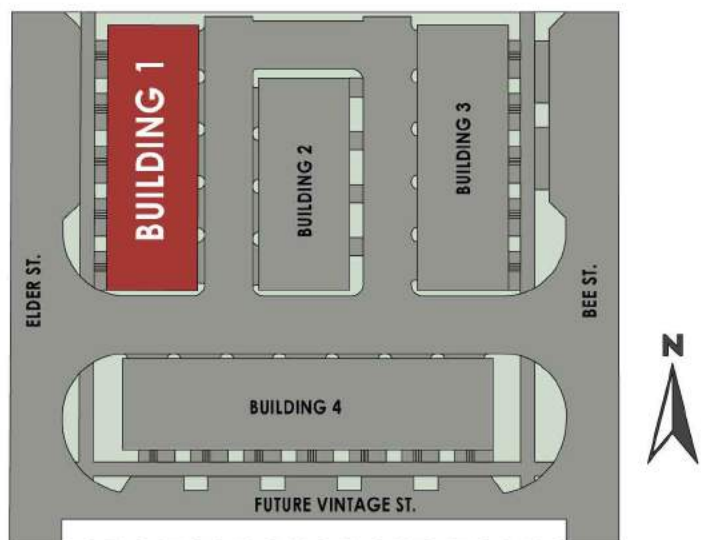
WEST ELEVATION MATERIAL CALCULATION		
MATERIAL	AREA (SF)	AREA (%)
BRICK	2114	81%
CEMENTITIOUS SIDING	485	19%
TOTAL	2599	100%

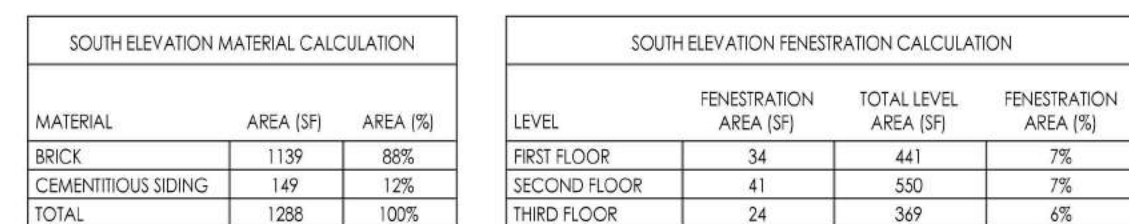
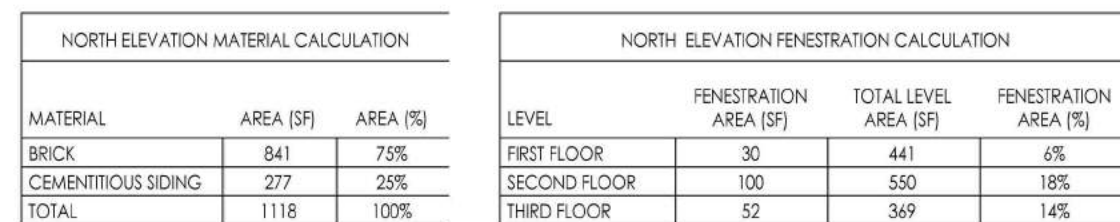
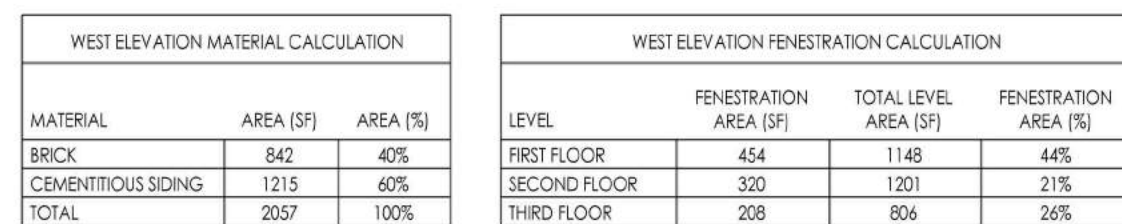
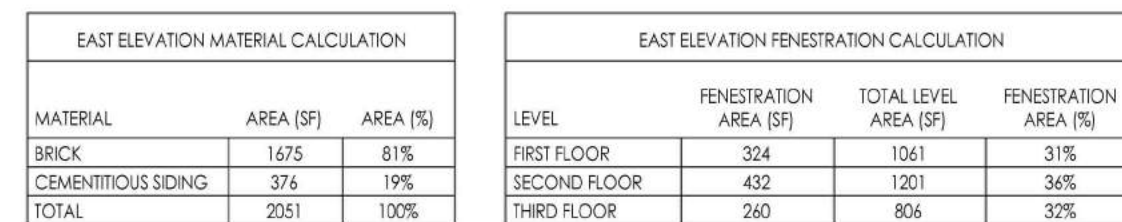
WEST ELEVATION FENESTRATION CALCULATION			
LEVEL	FENESTRATION AREA (SF)	TOTAL LEVEL AREA (SF)	FENESTRATION AREA (%)
FIRST FLOOR	406	1305	31%
SECOND FLOOR	341	1499	36%
THIRD FLOOR	325	1006	32%

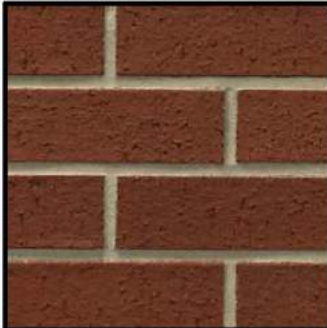

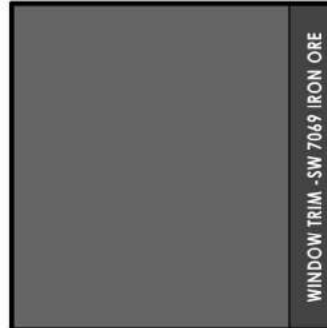
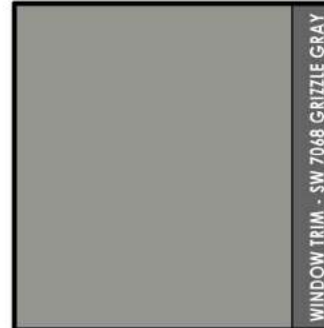

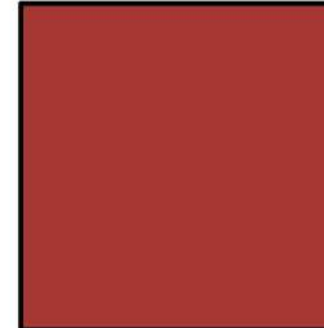

WEST - FRONT

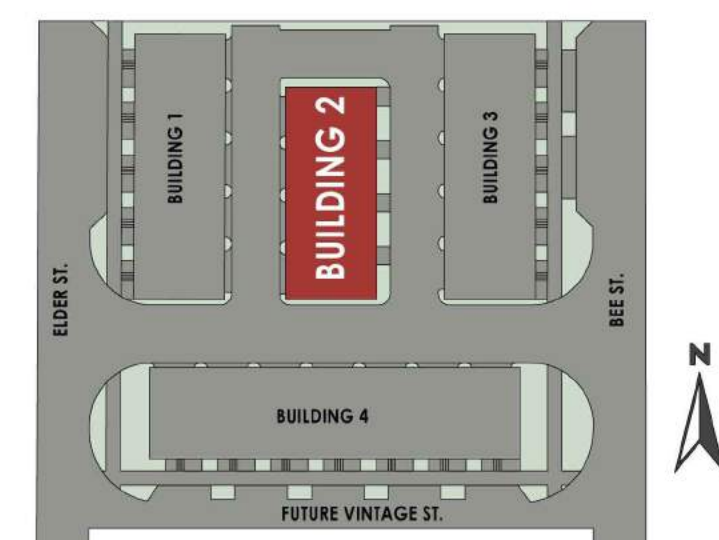
1" = 10'-0"

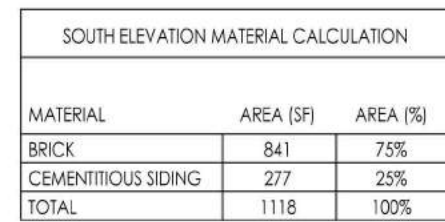
MATERIAL SELECTIONS						
BRICK - MAIN	BRICK - ACCENT	CEMENTITIOUS SIDING - VERTICAL	CEMENTITIOUS SIDING - LAP	FASCIA	METAL	ENTRY DOOR
ACME BRICK GARNET - VELOUR OR EQUIVALENT	ACME BRICK AMARETTO - VELOUR OR EQUIVALENT	HARDEIPANEL VERTICAL SIDING - SMOOTH w/HARDEIPANEL BATTENS - SMOOTH	HARDEIPANEL LAP SIDING - SMOOTH ALTERNATING 4" AND 7" EXPOSURES	HARDEIPANEL 1x6 - SMOOTH	GARAGE DOORS, SQUARE TUBE RAILING, AWNINGS, GUTTERS, BALCONY DOOR	CONTEMPORARY STEEL DOOR w/GLASS INSERTS
		PAINTED SW 7068 GRIZZLE GRAY	PAINTED SW 9163 TIN LIZIE	PAINTED SW 7069 IRON ORE		PAINTED SW 6601 TANAGER



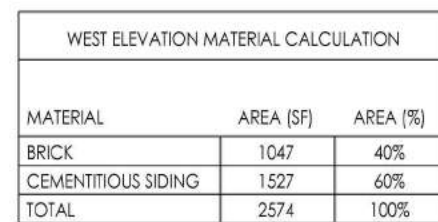

$$1'' = 10^1 - 0''$$

$$1'' = 10'-0''$$

$$1'' = 10^1 - 0''$$

$$1'' = 10^1 - 0''$$

MATERIAL SELECTIONS							
BRICK - MAIN	BRICK - ACCENT	CEMENTITIOUS SIDING - VERTICAL	CEMENTITIOUS SIDING - LAP	FASCIA	METAL	ENTRY DOOR	ROOF SHINGLES
ACHE BRICK GARNET - VELOUR OR EQUIVALENT	ACHE BRICK AMARETTO - VELOUR OR EQUIVALENT	HARDEPANEL VERTICAL SIDING - SMOOTH w/HARDETRIM BATTENS - SMOOTH	HARDEPLANK LAP SIDING - SMOOTH ALTERNATING 4" AND 7" EXPOSURES	HARDETRIM 1x6 - SMOOTH	CARAGE DOORS, SQUARE TUBE RAILING, AWNINGS, GUTTERS, BALCONY DOOR	CONTEMPORARY STEEL DOOR w/GLASS INSERTS	K/O - CAMBRIDGE IR ARCHITECTURAL SHINGLES DUAL BLACK OR EQUIVALENT
		PAINTED SW 7048 GRIZZLE GRAY	PAINTED SW 9143 TN LIZZE	PAINTED SW 7049 IRON ORE		PAINTED SW 6601 TANAGER	
							

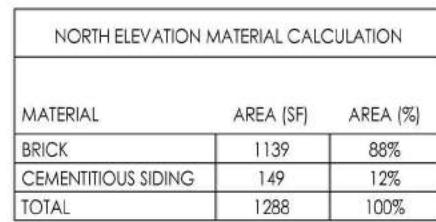




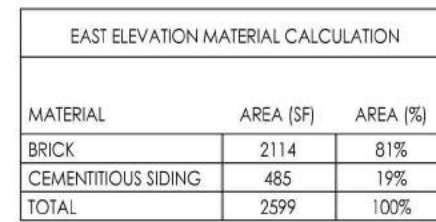
SOUTH ELEVATION FENESTRATION CALCULATION			
LEVEL	FENESTRATION AREA (SF)	TOTAL LEVEL AREA (SF)	FENESTRATION AREA (%)
FIRST FLOOR	30	441	6%
SECOND FLOOR	100	550	18%
THIRD FLOOR	52	369	14%

$$1'' = 10'-0''$$


WEST ELEVATION FENESTRATION CALCULATION			
LEVEL	FENESTRATION AREA (SF)	TOTAL LEVEL AREA (SF)	FENESTRATION AREA (%)
FIRST FLOOR	568	1363	44%
SECOND FLOOR	384	1499	21%
THIRD FLOOR	260	1006	26%








$$1'' = 10^{-6}$$


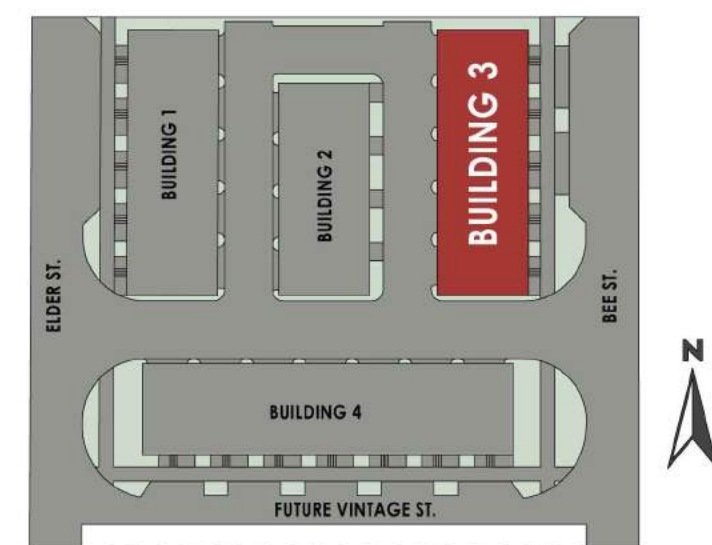
NORTH ELEVATION FENESTRATION CALCULATION			
LEVEL	FENESTRATION AREA (SF)	TOTAL LEVEL AREA (SF)	FENESTRATION AREA (%)
FIRST FLOOR	34	441	7%
SECOND FLOOR	41	550	7%
THIRD FLOOR	24	369	6%

$$1'' = 10^1 - 0''$$


EAST ELEVATION FENESTRATION CALCULATION			
LEVEL	FENESTRATION AREA (SF)	TOTAL LEVEL AREA (SF)	FENESTRATION AREA (%)
FIRST FLOOR	406	1305	31%
SECOND FLOOR	541	1499	36%
THIRD FLOOR	325	1006	32%

$$1'' = 10'-0''$$

MATERIAL SELECTIONS							
BRICK - MAIN	BRICK - ACCENT	CEMENTITIOUS SIDING - VERTICAL	CEMENTITIOUS SIDING - LAP	FASCIA	METAL	ENTRY DOOR	ROOF SHINGLES
ACME BRICK GABINET - VELVOUR OR EQUIVALENT	ACME BRICK AMARETTO - VELVOUR OR EQUIVALENT	HARDIPANEL VERTICAL SIDING - SMOOTH w/HARDIERIM BATTENS - SMOOTH	HARDIPANEL LAP SIDING - SMOOTH ALTERNATING 4" AND 7" EXPOSURES	HARDIERIM 116 - SMOOTH	GARAGE DOORS, SQUARE TUBE RAILING, AWNINGS, GUTTERS, BAUCONY DOOR	CONTEMPORARY STEEL DOOR w/GLASS INSERTS	KO - CAMBRIDGE IR ARCHITECTURAL SHINGLES DUAL BLACK OR EQUIVALENT
		PAINTED SW 7068 GRIZZLE GRAY	PAINTED SW 9163 TIN LIZZIE	PAINTED SW 7069 IRON ORE		PAINTED SW 6601 TANGER	
		 WINDOW TRIM - SW 7068 IRON ORE	 WINDOW TRIM - SW 7068 GRIZZLE GRAY				



ISSUE LOG

Date Description

PROJECT TERRACES AT BEE
ADDRESS
CITY

BUILDING 4
ELEVATIONS

DATE 07.01.2019
SCALE As indicated
DRN

S10.04

STRAND 1600000



WEST ELEVATION MATERIAL CALCULATION		
MATERIAL	AREA (SF)	AREA (%)
BRICK	1139	88%
CEMENTITIOUS SIDING	149	12%
TOTAL	1288	100%

WEST ELEVATION FENESTRATION CALCULATION			
LEVEL	FENESTRATION AREA (SF)	TOTAL LEVEL AREA (SF)	FENESTRATION AREA (%)
FIRST FLOOR	34	441	7%
SECOND FLOOR	41	550	7%
THIRD FLOOR	24	369	6%

WEST

1" = 10'-0"



NORTH ELEVATION MATERIAL CALCULATION		
MATERIAL	AREA (SF)	AREA (%)
BRICK	1457	40%
CEMENTITIOUS SIDING	2181	60%
TOTAL	3638	100%

NORTH ELEVATION FENESTRATION CALCULATION			
LEVEL	FENESTRATION AREA (SF)	TOTAL LEVEL AREA (SF)	FENESTRATION AREA (%)
FIRST FLOOR	796	1793	44%
SECOND FLOOR	448	2095	21%
THIRD FLOOR	364	1406	26%

NORTH

1" = 10'-0"



EAST ELEVATION MATERIAL CALCULATION		
MATERIAL	AREA (SF)	AREA (%)
BRICK	841	75%
CEMENTITIOUS SIDING	277	25%
TOTAL	1118	100%

EAST ELEVATION FENESTRATION CALCULATION			
LEVEL	FENESTRATION AREA (SF)	TOTAL LEVEL AREA (SF)	FENESTRATION AREA (%)
FIRST FLOOR	30	441	6%
SECOND FLOOR	100	550	18%
THIRD FLOOR	52	369	14%

EAST

1" = 10'-0"



SOUTH ELEVATION MATERIAL CALCULATION		
MATERIAL	AREA (SF)	AREA (%)
BRICK	2992	81%
CEMENTITIOUS SIDING	703	19%
TOTAL	3695	100%

SOUTH ELEVATION FENESTRATION CALCULATION			
LEVEL	FENESTRATION AREA (SF)	TOTAL LEVEL AREA (SF)	FENESTRATION AREA (%)
FIRST FLOOR	570	1793	31%
SECOND FLOOR	759	2095	36%
THIRD FLOOR	455	1406	32%

SOUTH - FRONT

1" = 10'-0"

MATERIAL SELECTIONS						
BRICK - MAIN	BRICK - ACCENT	CEMENTITIOUS SIDING - VERTICAL	CEMENTITIOUS SIDING - LAP	FASCIA	METAL	ENTRY DOOR
ACME BRICK GARNET - VELOUR OR EQUIVALENT	ACME BRICK AMARETTO - VELOUR OR EQUIVALENT	HARDEPANEL VERTICAL SIDING - SMOOTH w/HARDETRIM BATTENS - SMOOTH	HARDEPANEL LAP SIDING - SMOOTH ALTERNATING 4" AND 7" EXPOSURES	HARDETRIM 1x6 - SMOOTH	GARAGE DOORS, SQUARE TUBE RAILING, AWNINGS, GUTTERS, BALCONY DOOR	CONTEMPORARY STEEL DOOR w/GLASS INSERTS
		PAINTED SW 7068 GRIZZLE GRAY	PAINTED SW 9163 TN LIZIE	PAINTED SW 7069 IRON ORE		PAINTED SW 6601 TANAGER

