

INTERNALLY ILLUMINATED PROPERTY I.D. ON NORTH & WEST SIDES OF CLUBHOUSE X 2 A



RETURN COLORS
SW 6869 STOP

A

INTERNALLY ILLUMINATED PROPERTY I.D. SIGN X 2
DUAL-LIT CHANNEL LETTERS WITH 3" RETURNS (SW6869 STOP) & FACES (SW 7014 EIDER WHITE) WITH 1" ALUMINUM STAND-OFFS, 1/2" PUSH THROUGH ACRYLIC LETTERING & GRAPHICS (SIGN WHITE) WITH TRANSLUCENT CAST VINYL ON FIRST SURFACE (ORACAL® TRANSLUCENT PREMIUM CAST 8800-348 SCARLET RED). 120V/20 AMP POWER FROM DEDICATED BREAKER WITH TIMER/PHOTOCELL PULLED FROM ENCLOSED WIREWAY ON BACK OF PARAPET.



©2018 All ideas, arrangements and plans indicated or represented by these drawings are the property of Fource Communications, Ltd. and were created, evolved and developed for use on and in connection with the specified project. No part of the drawings, designs, arrangements or ideas herein shall be duplicated or used for any purpose whatsoever without the express written consent of Fource Communications, Ltd.

JOB NO.

JPI-917-7S

Jefferson 1900
JPI
Farmers Branch, Texas

APPROVAL

Signature

Date

Your signature acknowledges full approval of the design layout and its content, releasing Fource Communications, Ltd. from any responsibility regarding incorrect information and design.

Any colors shown are only representative of actual colors to be used. Final colors will be matched as closely as possible. Colors shown tend to vary due to some materials used in the industry.

DESIGNER INITIALS

DH

DATE

08/26/2019

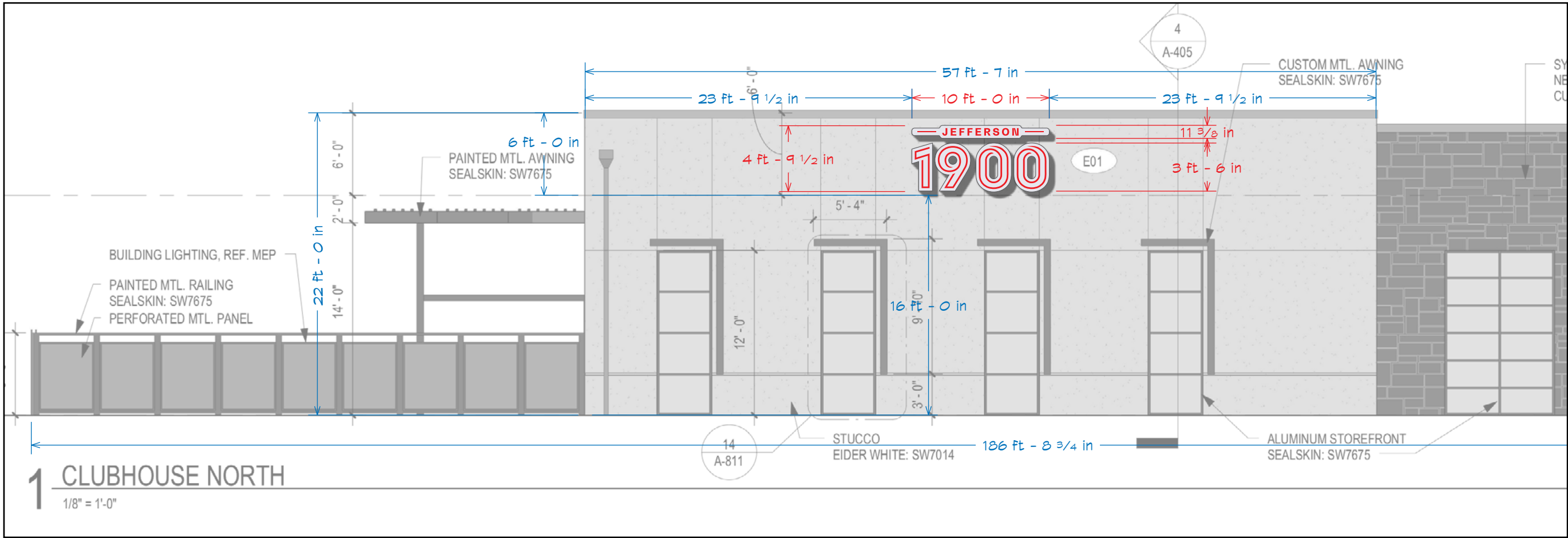
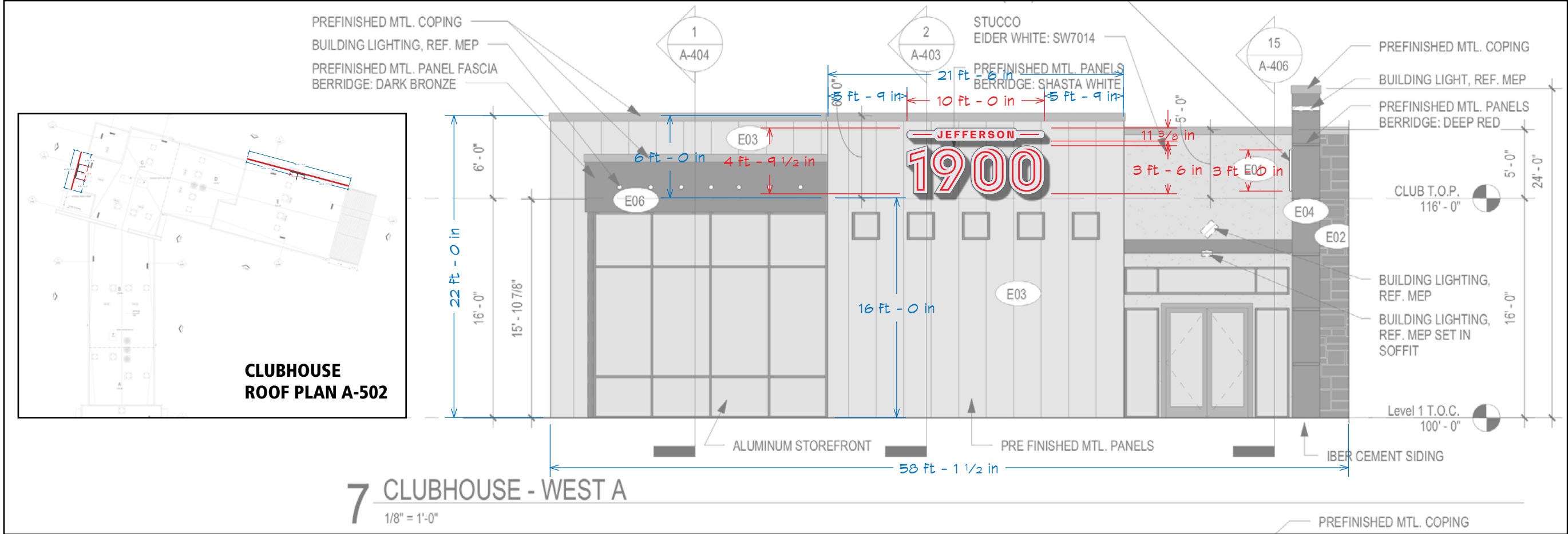
SHEET TITLE

ENTRY
SIGNAGE

SHEET NO.

ES.01.02

INTERNALLY ILLUMINATED PROPERTY I.D. ON NORTH & WEST SIDES OF CLUBHOUSE ELEVATION A-520 A



©2018 All ideas, arrangements and plans indicated or represented by these drawings are the property of Fource Communications, Ltd. and were created, evolved and developed for use on and in connection with the specified project. No part of the drawings, designs, arrangements or ideas herein shall be duplicated or used for any purpose whatsoever without the express written consent of Fource Communications, Ltd.

JOB NO.

JPI-917-75

Jefferson 1900
JPI
Farmers Branch, Texas

APPROVAL

Signature

Date
Your signature acknowledges full approval of the design layout and its content, releasing Fource Communications, Ltd. from any responsibility regarding incorrect information and design.

Any colors shown are only representative of actual colors to be used. Final colors will be matched as closely as possible. Colors shown tend to vary due to some materials used in the industry.

DESIGNER INITIALS

DH

DATE

08/26/2019

SHEET TITLE

ENTRY
SIGNAGE

SHEET NO.

ES.01A.01

SQUARE FEET

D/F DIRECTIONAL SIGN X 2
ALUMINUM SIGN CABINET ON 4" ALUMINUM SQUARE TUBE POSTS (SW 6869 STOP) WITH HIGH PERFORMANCE CAST VINYL LETTERING & GRAPHICS (ORACAL® 951-109 HULL WHITE), .063" ALUMINUM TOP PLATES (SW 7014 EIDER WHITE) WITH HIGH PERFORMANCE CAST VINYL LETTERING & GRAPHICS (ORACAL® 751-031 RED).

B:1 INSTALLS AT WEST ENTRANCE TO BLDG 6 & 7 PROPERTY ON KNIGHTSBRIDGE RD.
B:2 INSTALLS AT SOUTH ENTRANCE TO BLDG 6 & 7 PROPERTY ON CROWN RD.



D/F DIRECTIONAL SIGN X 1 EACH (2 TOTAL) **B:1 B:2**

B:1 X 1

SIDE 1
SOUTH FACE

**SIDE 1
NORTH FACE**



B:1:2

B:2 X 1

**SIDE 1
WEST FACE**

**SIDE 1
EAST FACE**



B:2:2



©2018 All ideas, arrangements and plans indicated or represented by these drawings are the property of Fource Communications, Ltd. and were created, evolved and developed for use on and in connection with the specified project. No part of the drawings, designs, arrangements or ideas herein shall be duplicated or used for any purpose whatsoever without the express written consent of Fource Communications, Ltd.

JOB NO.

PI-917-7S

Jefferson 1900
JPI
Farmers Branch, Texas

APPROVAL

Signature _____

-Date
Your signature acknowledges full approval of the design layout and its content, releasing Fource Communications, Ltd. from any responsibility regarding incorrect information and design.

Any colors shown are only representative of actual colors to be used. Final colors will be matched as closely as possible. Colors shown tend to vary due to some materials used in the industry.

DESIGNER INITIALS

DH/FOX

DATE _____

08/27/2019

SHEET TITLE

ENTRY SIGNAGE

SHEET NO.

ES.02.03

15
SQUARE FEET

S/F DIRECTIONAL SIGN X 1 C



©2018 All ideas, arrangements and plans indicated or represented by these drawings are the property of Fource Communications, Ltd. and were created, evolved and developed for use on and in connection with the specified project. No part of the drawings, designs, arrangements or ideas herein shall be duplicated or used for any purpose whatsoever without the express written consent of Fource Communications, Ltd.

JOB NO.

JPI-917-7S

Jefferson 1900
JPI
Farmers Branch, Texas

APPROVAL

Signature

Date
Your signature acknowledges full approval of the design layout and its content, releasing Fource Communications, Ltd. from any responsibility regarding incorrect information and design.

Any colors shown are only representative of actual colors to be used. Final colors will be matched as closely as possible. Colors shown tend to vary due to some materials used in the industry.

DESIGNER INITIALS

DH

DATE

08/23/2019

SHEET TITLE

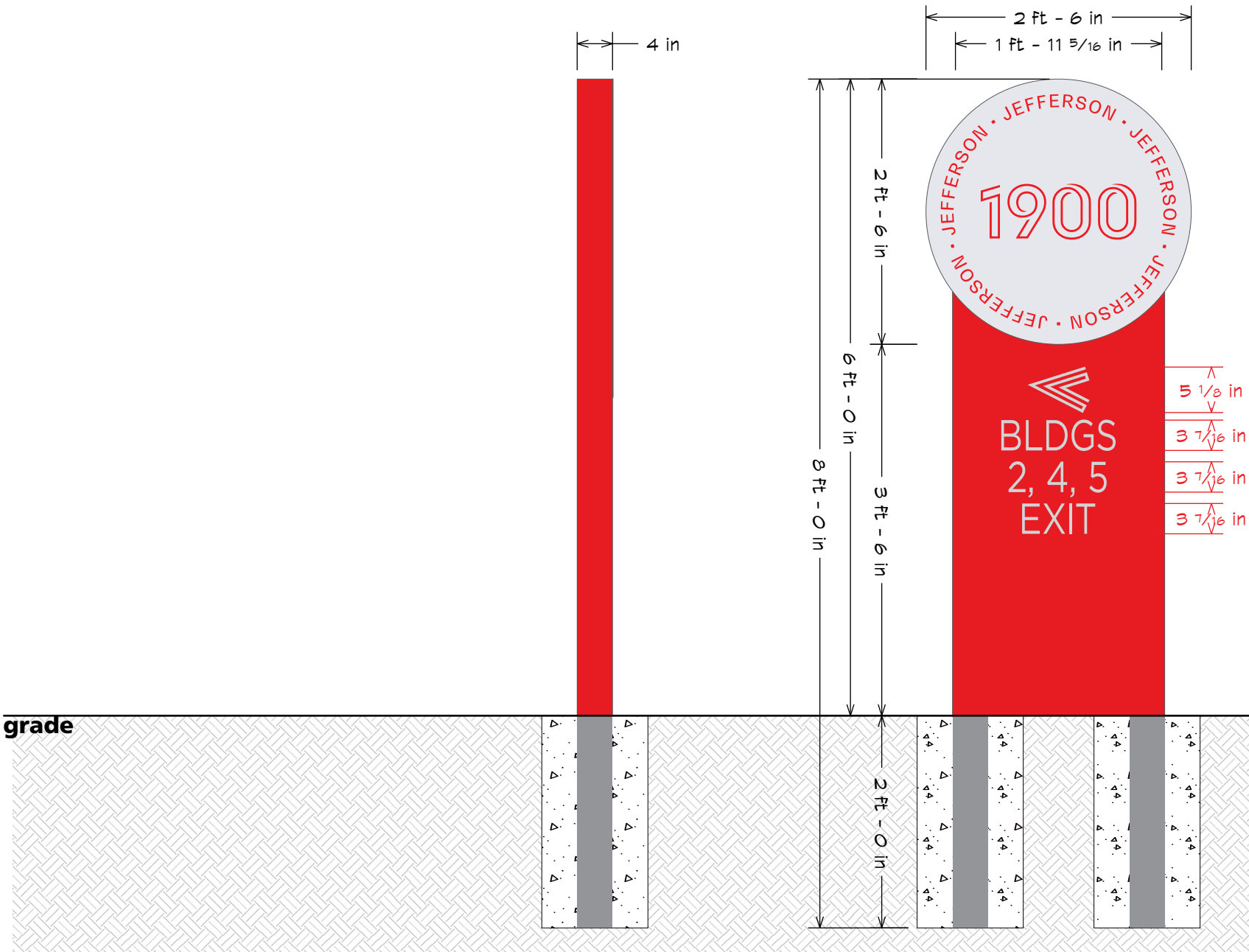
ENTRY
SIGNAGE

SHEET NO.

ES.03.01

C

S/F DIRECTIONAL SIGN X 1
.080" ALUMINUM ON 4" ALUMINUM SQUARE TUBE POSTS (SW 6869 STOP, PAINT BACK OF SIGN TO MATCH) WITH HIGH PERFORMANCE CAST VINYL LETTERING & GRAPHICS (ORACAL® 951-109 HULL WHITE), .063" ALUMINUM TOP PLATE (SW 7014 EIDER WHITE) WITH HIGH PERFORMANCE CAST VINYL LETTERING & GRAPHICS (ORACAL® 751-031 RED).
INSTALLS AT SOUTH ENTRANCE TO BLDG 2, 4 & 5 PARKING AREA





©2018 All ideas, arrangements and plans indicated or represented by these drawings are the property of Fource Communications, Ltd. and were created, evolved and developed for use on and in connection with the specified project. No part of the drawings, designs, arrangements or ideas herein shall be duplicated or used for any purpose whatsoever without the express written consent of Fource Communications, Ltd.

JOB NO.
JPI-917-7S

Jefferson 1900
JPI
Farmers Branch, Texas

APPROVAL

Signature _____
Date _____
Your signature acknowledges full approval of the design layout and its content, releasing Fource Communications, Ltd. from any responsibility regarding incorrect information and design.

Any colors shown are only representative of actual colors to be used. Final colors will be matched as closely as possible. Colors shown tend to vary due to some materials used in the industry.

DESIGNER INITIALS

DH

DATE

08/27/2019

SHEET TITLE

ENTRY
SIGNAGE

SHEET NO.

ES.03A.01

