



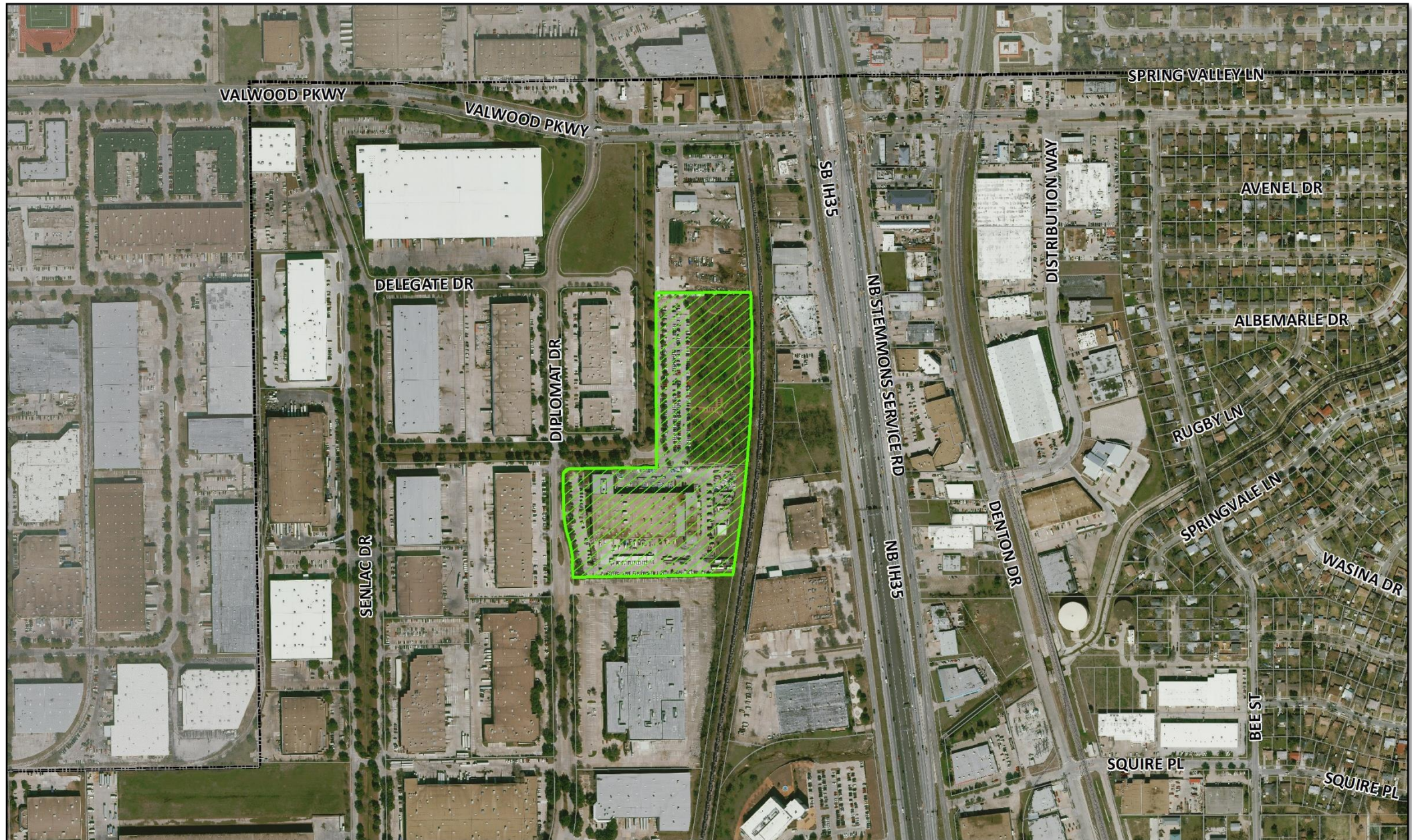
**FARMERS  
BRANCH**

# City Council

November 12, 2019—Agenda Item J.2

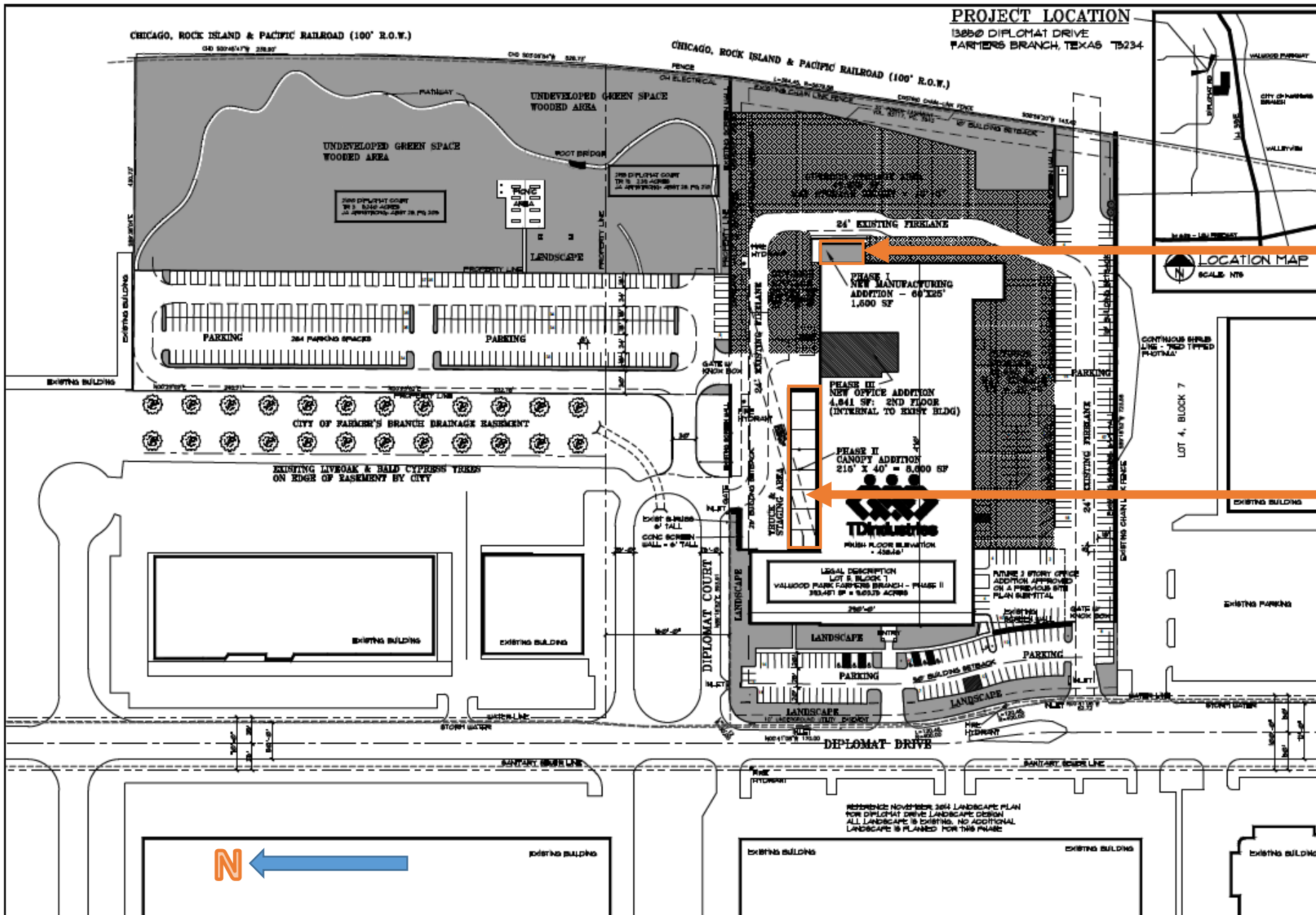


# 13850 Diplomat Drive - Aerial Map





# 13850 Diplomat Drive - Detailed Site Plan



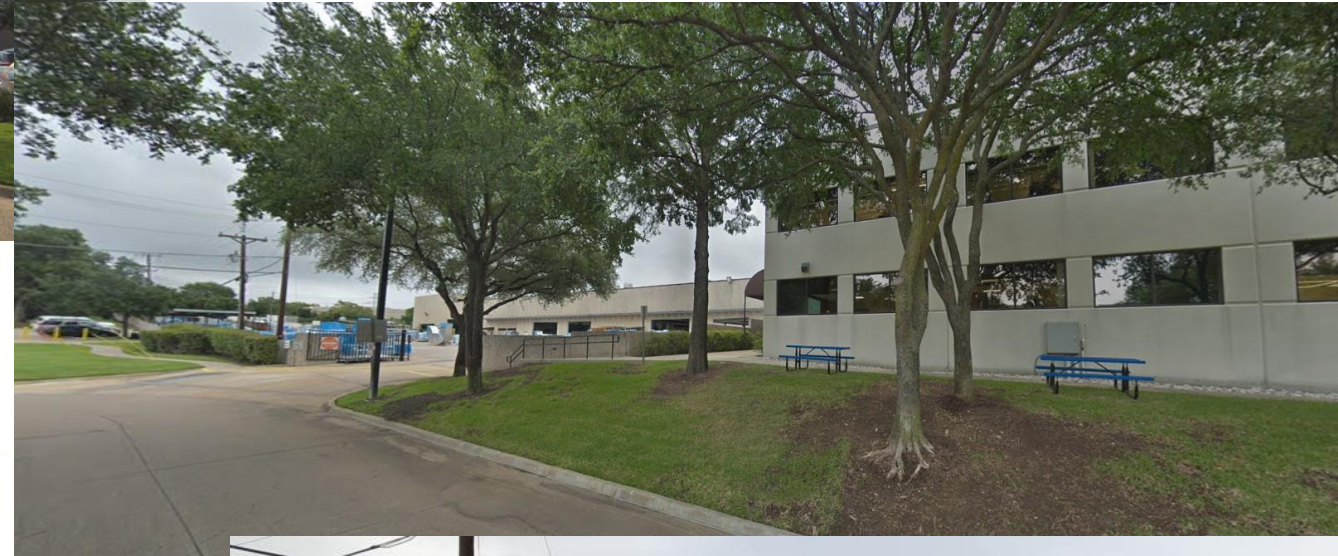
- TD Industries operates a light manufacturing facility at this site.
- 1,500 square foot (65' x 25') building addition to house a manufacturing equipment.
- An 8,600 square foot (215' x 40') canopy addition to cover storage and staging area.



# 13325 Bee Street –Site Photographs



View from Diplomat Drive



View from Diplomat CT



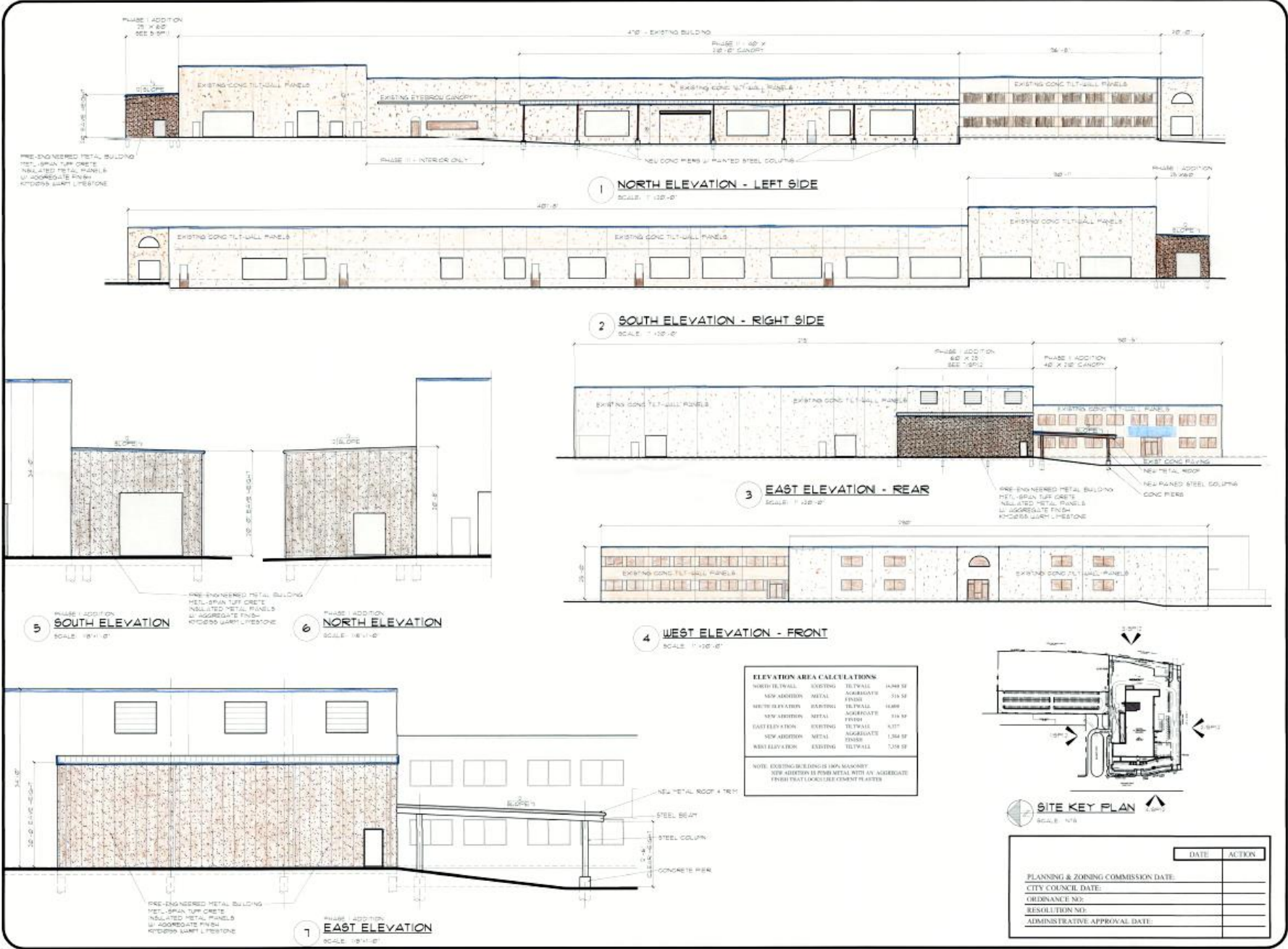
Existing Landscape Plan



View of the Eyebrow Canopy



# 13850 Diplomat Drive - Building Elevations



# 13850 Diplomat Drive – Comprehensive Plan Recommendation

- The West Side Plan designates the subject property as industrial district.
- The existing light manufacturing with outside storage use is consistent with the comprehensive plan recommendation.

## P&Z Recommendation

- Planning and Zoning Commission recommended approval of the SUP and associated Detailed Site Plan amendment at their October 28, 2019 meeting.

