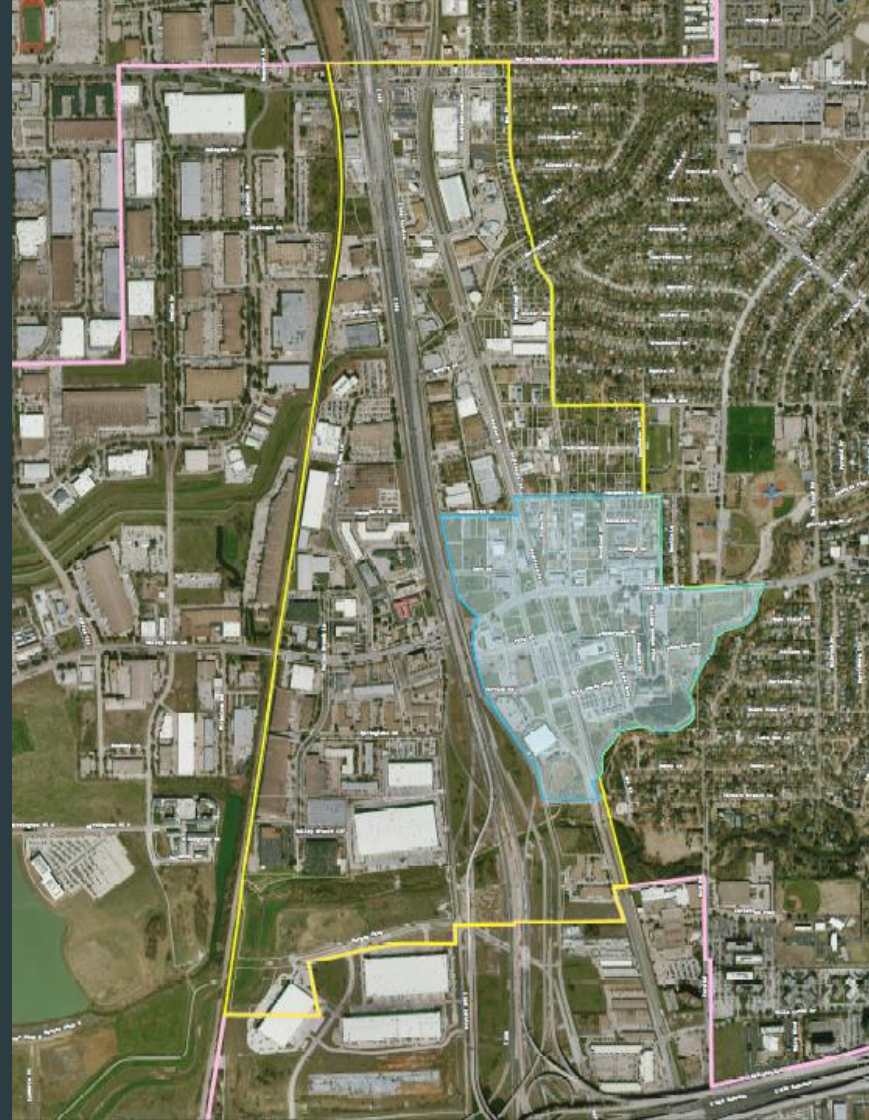


IH-35E Corridor Study

City Council - November 12, 2019

IH-35E Corridor

- ▶ IH-35E Corridor Vision Study was identified as a project to fulfill C2 of the 2020 Strategic Plan.
- ▶ Corridor Vision Study will guide development within the area for approximately the next 20 years
- ▶ I-35E highway widening makes this an optimal time to conduct the study



RFQ/Selection Process

- ▶ Eight RFQ responses were received
- ▶ Three firms were interviewed following a thorough evaluation process including contacting project references.
- ▶ Staff is recommending that City Council execute a Professional Services Agreement with Interface Studio LLC. Interface Studio will act as the primary consultant, with Ninigret Partners and Big Red Dog working as sub-consultants.