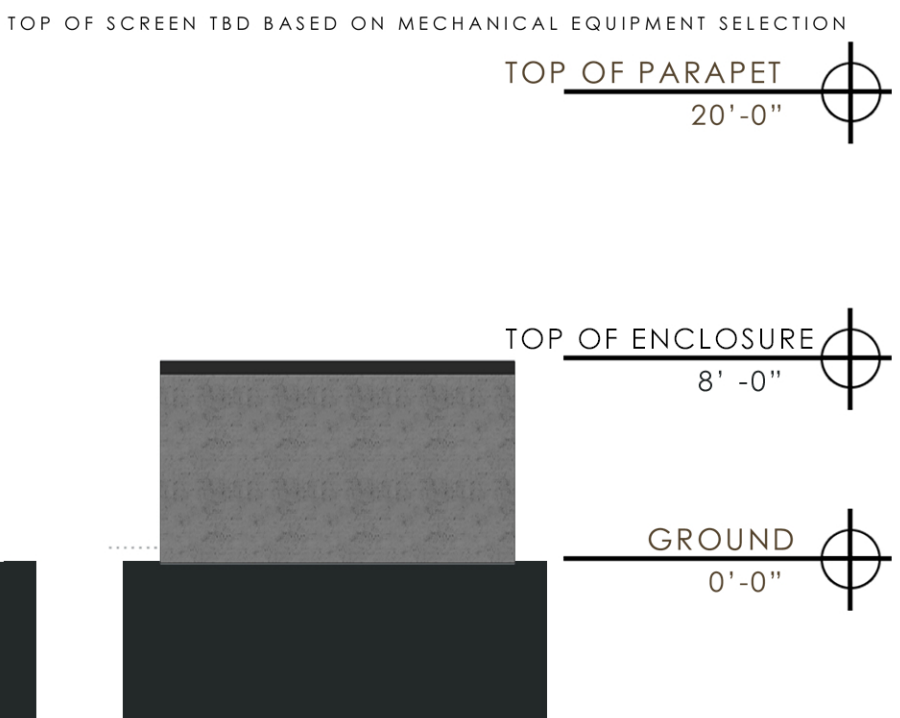
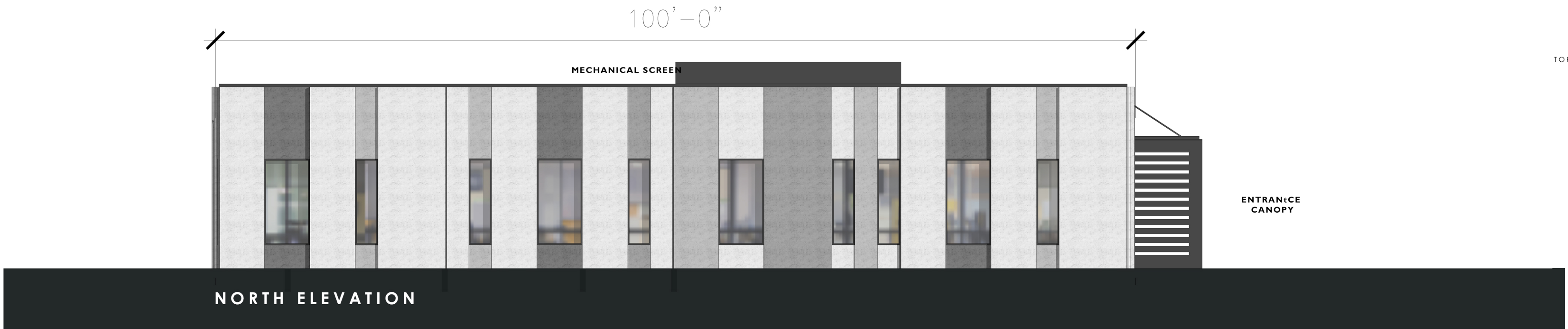


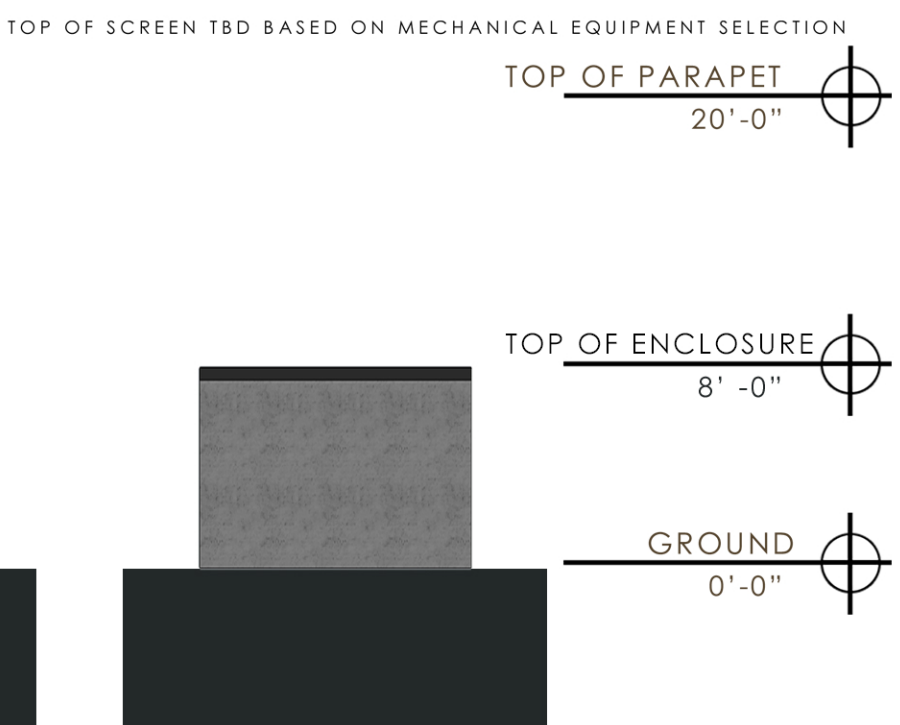
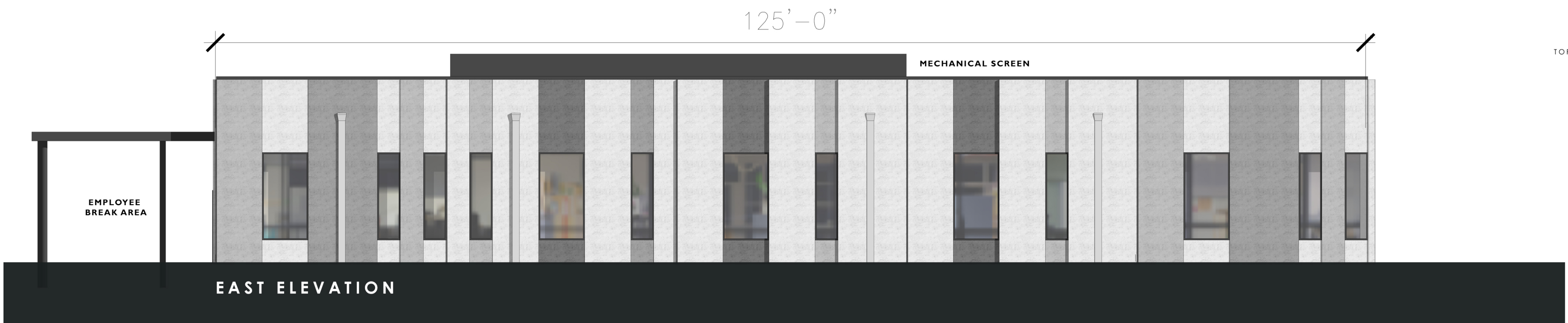
FORM LINED CONCRETE - 1,667 GSF - 75%  
GLAZING - 285 GSF - 13%  
MISC. METAL - 48 GSF - 2%  
CANOPY - 86 GSF - 4%  
CORROGATED METAL SCREEN - 138 GSF - 6%  
**TOTAL : 2,224 GSF**

STUCCO OVER CMU - 16 GSF - 20%  
METAL DOOR - 62 GSF - 80%



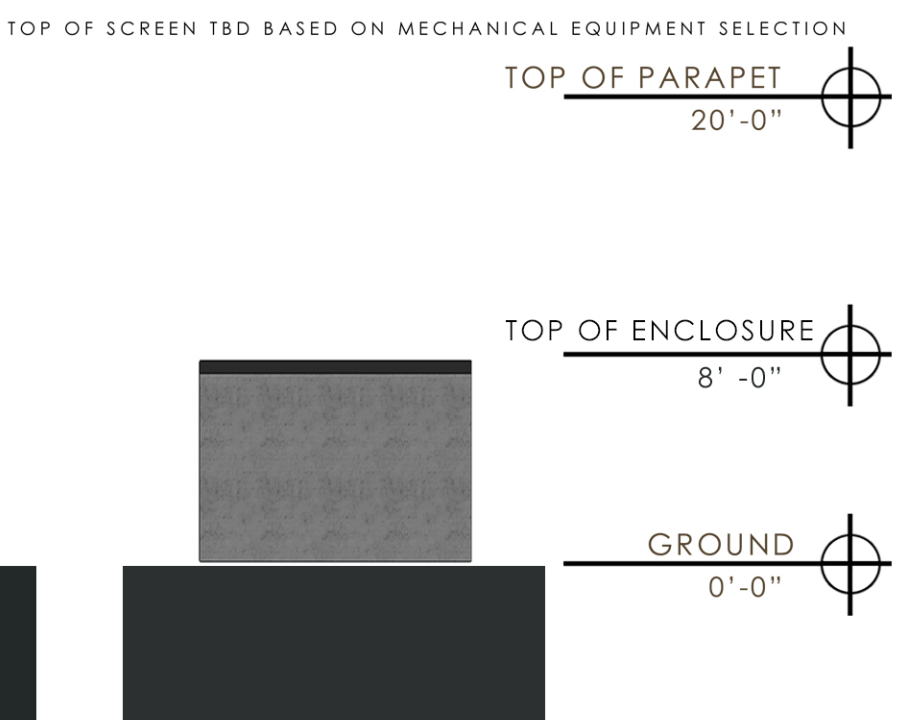
FORM LINED CONCRETE - 1,667 GSF - 75%  
GLAZING - 333 GSF - 15%  
CANOPY - 86 GSF - 4%  
CORROGATED METAL SCREEN - 138 GSF - 6%  
**TOTAL : 2,224 GSF**

STUCCO OVER CMU - 80 GSF - 100%



FORM LINED CONCRETE - 2,072 GSF - 75%  
GLAZING - 428 GSF - 15%  
CORROGATED METAL SCREEN - 272 GSF - 10%  
**TOTAL : 2,772 GSF**

STUCCO OVER CMU - 64 GSF - 100%



FORM LINED CONCRETE - 2,071 GSF - 72%  
GLAZING - 429 GSF - 15%  
CANOPY - 86 GSF - 3%  
CORROGATED METAL SCREEN - 272 GSF - 10%  
**TOTAL : 2,858 GSF**

STUCCO OVER CMU - 64 GSF - 100%  
SIGN : 34 SQ FT - 1% OF SURFACE

CITY ACTION BLOCK		
	DATE	ACTION
PLANNING AND ZONING COMMISSION DATE:		
CITY COUNCIL DATE		
ORDINANCE NO.		
RESOLUTION NO.		
ADMINISTRATIVE APPROVAL DATE		

