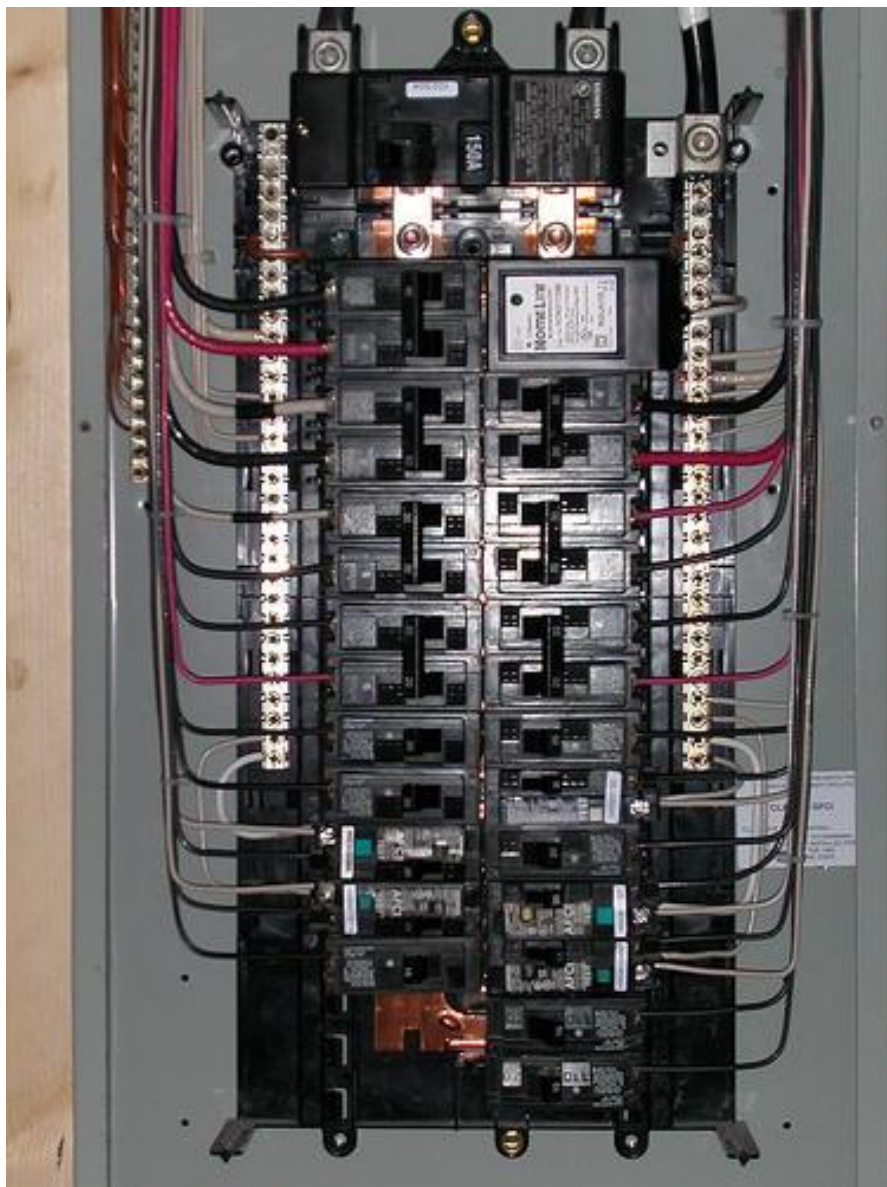




# Adoption of 2020 National Electrical Code

City Council - June 15, 2021



# National Electrical Code

- ▶ Covers the installation of electrical components and systems.
- ▶ The purpose is to safeguard people and property from hazards arising from the use of electricity.
- ▶ Texas has adopted the National Electrical Code as the State electrical code.
- ▶ Currently the City has adopted the 2017 National Electrical Code.

# Introduction to Construction Codes

- ▶ Cities use model codes so that they don't have to write their own.
- ▶ Model codes are developed under a consensus standards development process at the national level.
- ▶ Model codes are updated on a 3 year cycle to keep pace with changes in the construction industry.
- ▶ Municipalities can by ordinance adopt these codes and make amendments to these codes to address local or regional conditions.
- ▶ The North Central Texas Council of Governments provides amendments to the construction codes that are intended to unify the geographic region that the codes are enforced in and to address regional issues.

# Reasons to Adopt the 2020 NEC

- ▶ Provide an overall general increase in life safety for residential and commercial electrical installations
- ▶ Better safety, usability and resilient installations for resident's homes
- ▶ Enhanced protections for first responders
- ▶ Clarify minimum safety requirements for designers and contractors regarding installations involving emerging technologies, such as the field of sustainable power systems

# Significant Changes to the NEC

- ▶ For new construction, emergency electrical disconnects for dwelling units will be required to be installed in a readily accessible outdoor location and shall be clearly marked as such with a permanent, weatherproof sign.
- ▶ Surge protection device is required to be installed for dwelling units (houses, duplexes, town homes and individual apartment units) on new construction and service change outs. This will typically be installed at the electrical panel and will cover the entire dwelling unit. This protects safety related electronics in a household such as smoke/carbon monoxide detectors and GFCI protection devices. This will also aid in protecting residential electronics from damage caused by surges.
- ▶ Ground fault circuit protection is now required on all circuits in locations specified by code, not just 15 or 20 ampere receptacles. This means that clothes dryers and any electrical ranges within six feet of a sink will require GFCI protection to be installed.

# Recommendation on the 2020 National Electrical Code

- ▶ Community Services staff recommends the City of Farmers Branch adopt the 2020 National Electrical Code with NCT COG amendments

