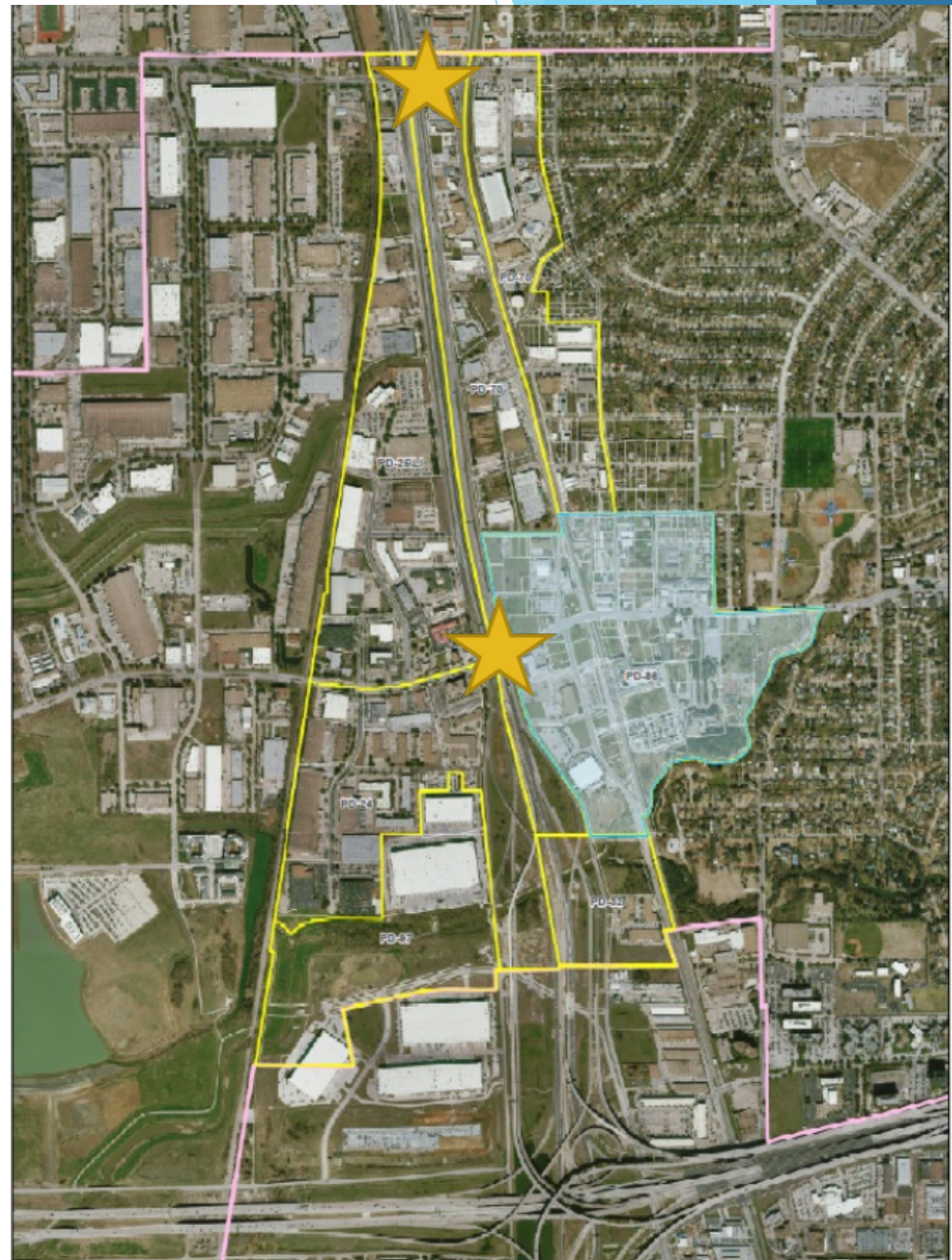
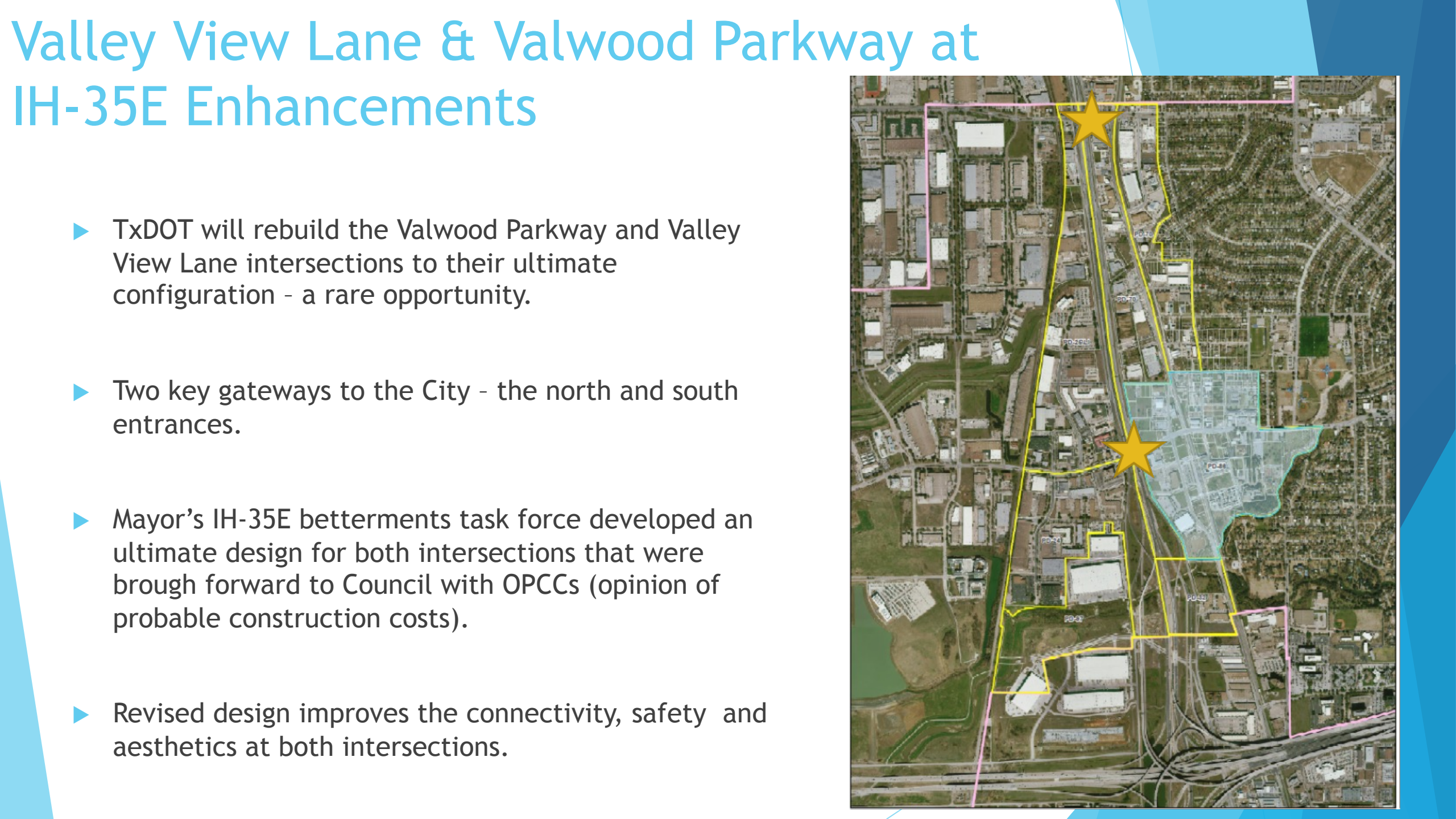


IH-35E Enhancements

City Council Study Session

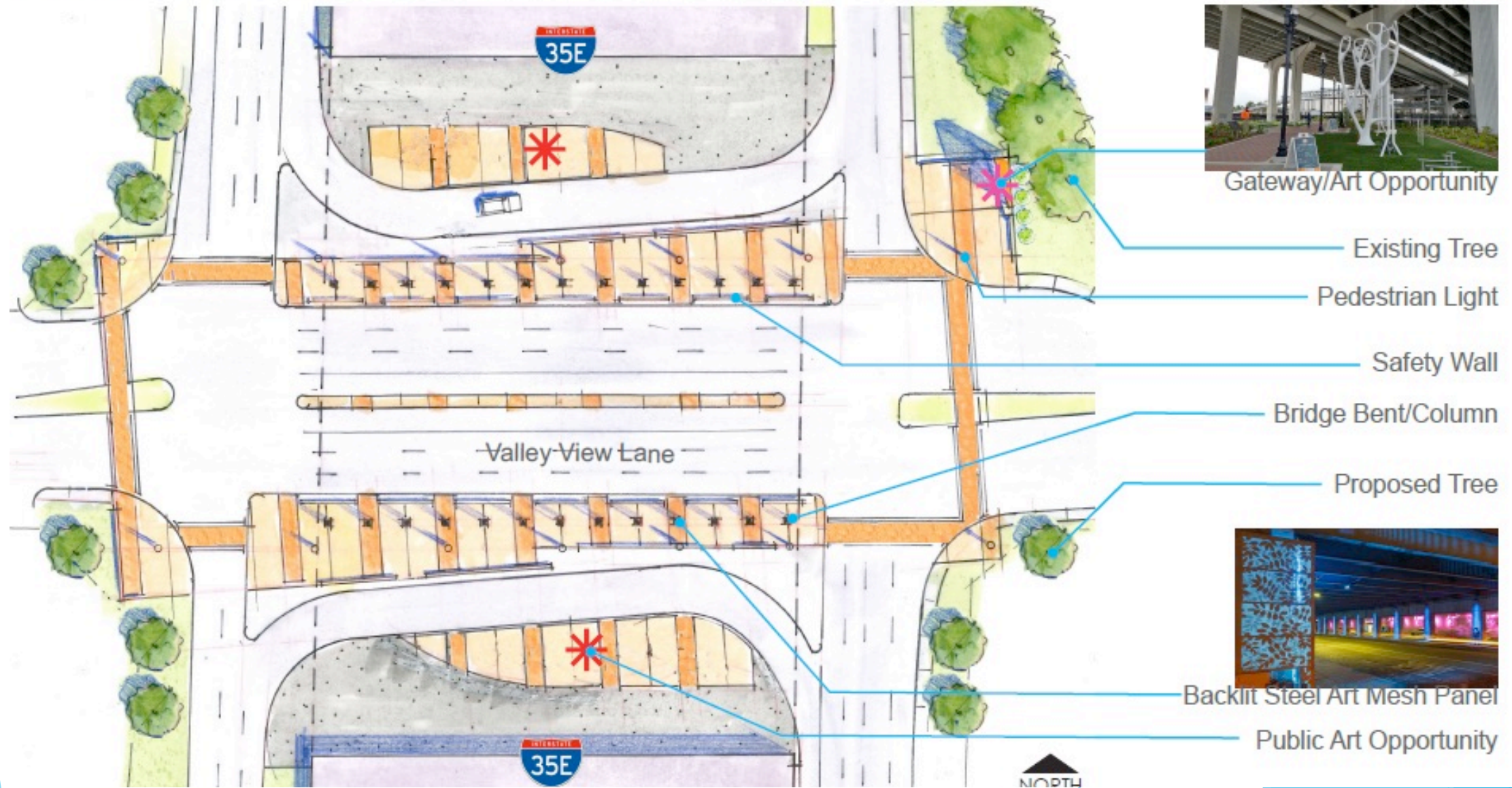
September 7, 2021

- # Valley View Lane & Valwood Parkway at IH-35E Enhancements
- ▶ TxDOT will rebuild the Valwood Parkway and Valley View Lane intersections to their ultimate configuration - a rare opportunity.
 - ▶ Two key gateways to the City - the north and south entrances.
 - ▶ Mayor's IH-35E betterments task force developed an ultimate design for both intersections that were brought forward to Council with OPCCs (opinion of probable construction costs).
 - ▶ Revised design improves the connectivity, safety and aesthetics at both intersections.
- 



Enhancements

Ultimate Intersection Layout - Enhancements



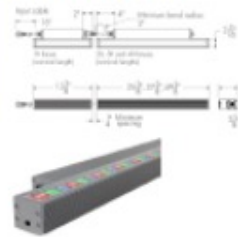
Enhancements

Ultimate Intersection Layout - Enhancements

Pedestrian Light



Backlit Art Mesh Panel - Turned at U-Turn angle



Safety Wall



Textured Integral Color Concrete

Concrete Paver Band



Valley View Lane & Valwood Parkway Intersection at I-35E Enhancements

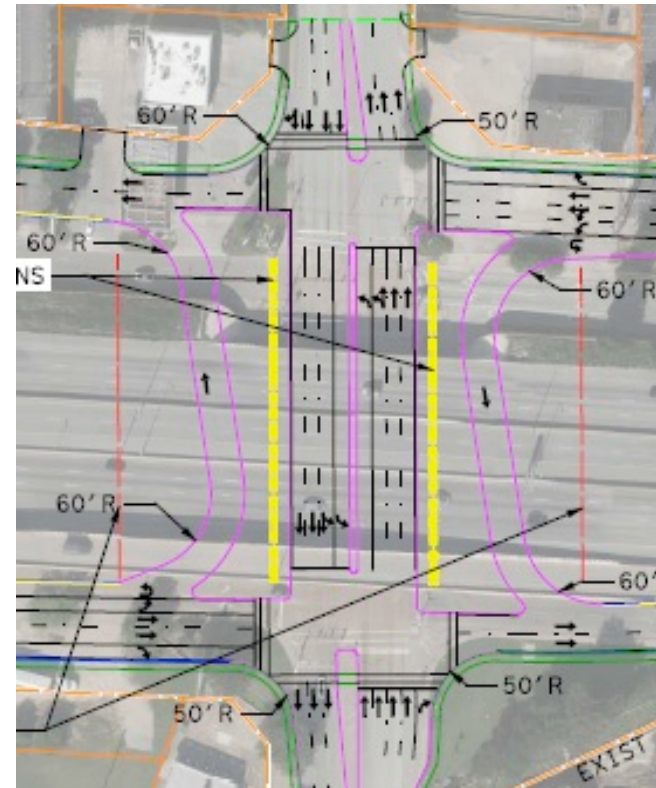
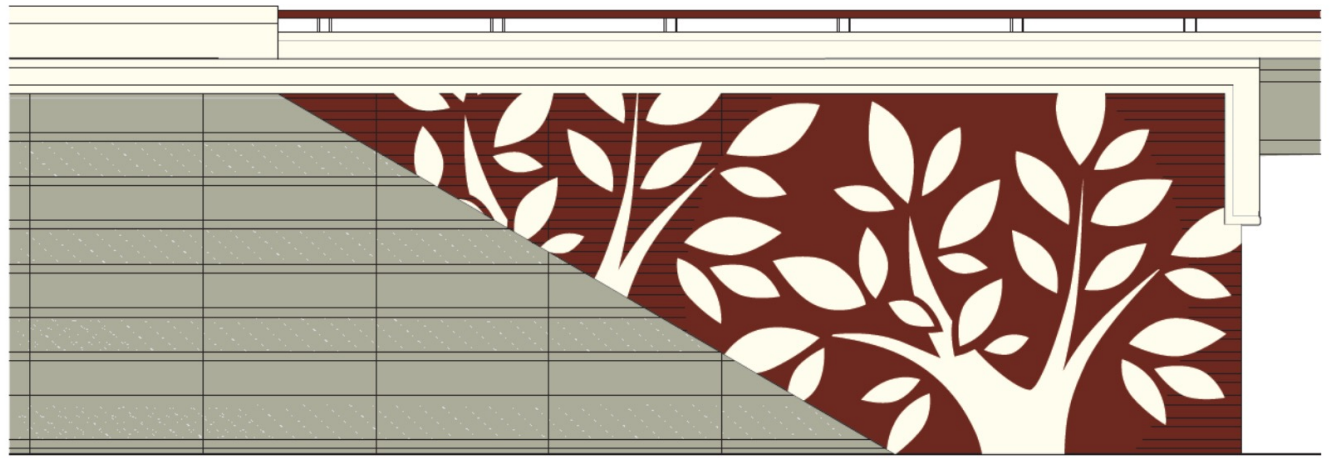
June 17, 2020
Kimley-Horn

Council Direction

- ▶ Task force recommendations and OPCCs were brought forward to Council on June 23 2020. Council identified the following items as priorities:
 - ▶ Valley View Lane at IH-35E enhancements should be prioritized into three phases - immediate, future near term, and future long term.
 - ▶ Intersection enhancements at the Valwood Parkway at IH-35E intersection was identified as a lesser priority.
 - ▶ Relocation of overhead utilities underground was not identified as a priority for the FY2020-21 budget but could be a future phase improvement.
- ▶ On July 14, 2020 Council allocated \$2.5M to fund phase one IH-35E betterments.
 - ▶ An effort was made to include construction components that would gain efficiencies and/or cost savings when completed in conjunction with TxDot's phase two widening.
 - ▶ Valwood Parkway at IH-35E enhancements are limited to conduit and power service to locations that would facilitate lighting instillation in future phases.
- ▶ Components identified for phase two and three are not currently funded.

Current Status

- ▶ TxDOT has conditionally awarded the design build contract. Contract is expected to be finalized in September 2021.
- ▶ Both intersections will benefit from a modified intersections design and abutment panel graphics, at no cost to the City.
- ▶ Cost for enhancements at both intersections have been provided to the City by TxDOT.



Enhancement Costs:

- ▶ TxDOT cost of enhancements total \$2.34M, lower than the \$2.5M approved by City Council and include the following additional items:
 - ▶ Lighting standards (both intersections)
 - ▶ Hardscape enhancements at Valwood Pkwy
 - ▶ Pedestrian safety wall at Valwood Pkwy

| ENHANCEMENT COSTS | | | |
|--|--------------------|--------------------|-------------------|
| VALLEY VIEW LANE | | | |
| Enhancement | TxDOT OPCC | Actual Cost | Difference |
| Hardscape Enhancements | \$1,177,570 | \$717,303 | \$460,267 |
| Pedestrian Safety Wall | \$257,450 | \$108,920 | \$148,530 |
| Pedestrian Lighting** | \$54,100 | \$215,939 | (\$161,839) |
| Valley View subtotal | \$1,489,120 | \$1,042,162 | \$446,958 |
| VALWOOD PARKWAY | | | |
| Enhancement | TxDOT OPCC | Actual Cost | Difference |
| Hardscape Enhancements | N/A | \$642,239 | (\$642,239) |
| Pedestrian Safety Wall | N/A | \$111,076 | (\$111,076) |
| Pedestrian Lighting** | \$54,580 | \$233,879 | (\$179,299) |
| Valwood Parkway subtotal | \$54,580 | \$987,194 | (\$932,614) |
| PROFESSIONAL SERVICES | | | |
| Service | TXDOT OPCC | Actual Cost | Difference |
| Professional Services | \$771,850 | \$311,575 | \$460,275 |
| TOTAL COST | \$2,315,550 | \$2,340,931 | (\$25,381) |
| Notes: Blue highlight, and N/A indicates enhancements that were not endorsed by Council at the July 14, 2020 Council meeting | | | |
| Pedestrian Lighting** TxDOT OPCC includes only conduit and service for lighting. RFP also includes the cost of the lighting standards. | | | |

Task Force Recommendation/Next Steps:

Recommendation:

- ▶ On August 23, 2021 the task force recommended that City Council move forward with hardscape enhancements, lighting (including lighting standards) and pedestrian safety wall at the Valley View Lane and IH-35E intersection; and lighting and the pedestrian safety wall at the Valwood Parkway and IH-35E intersection. The total cost of these enhancements is approximately \$1.7M.

Next Steps:

- ▶ Council discussion today will allow staff to finalize the advanced funding agreement with TxDOT which will be brought back to City Council for formal consideration on September 21, 2020.
- ▶ If the advanced funding agreement is approved by Council the project will be funded within 30 days.

The background features abstract, overlapping geometric shapes in various shades of blue, ranging from light sky blue to deep navy blue. These shapes are primarily located on the right side of the slide, creating a modern, layered effect. The rest of the slide has a plain white background.

Questions / Discussion