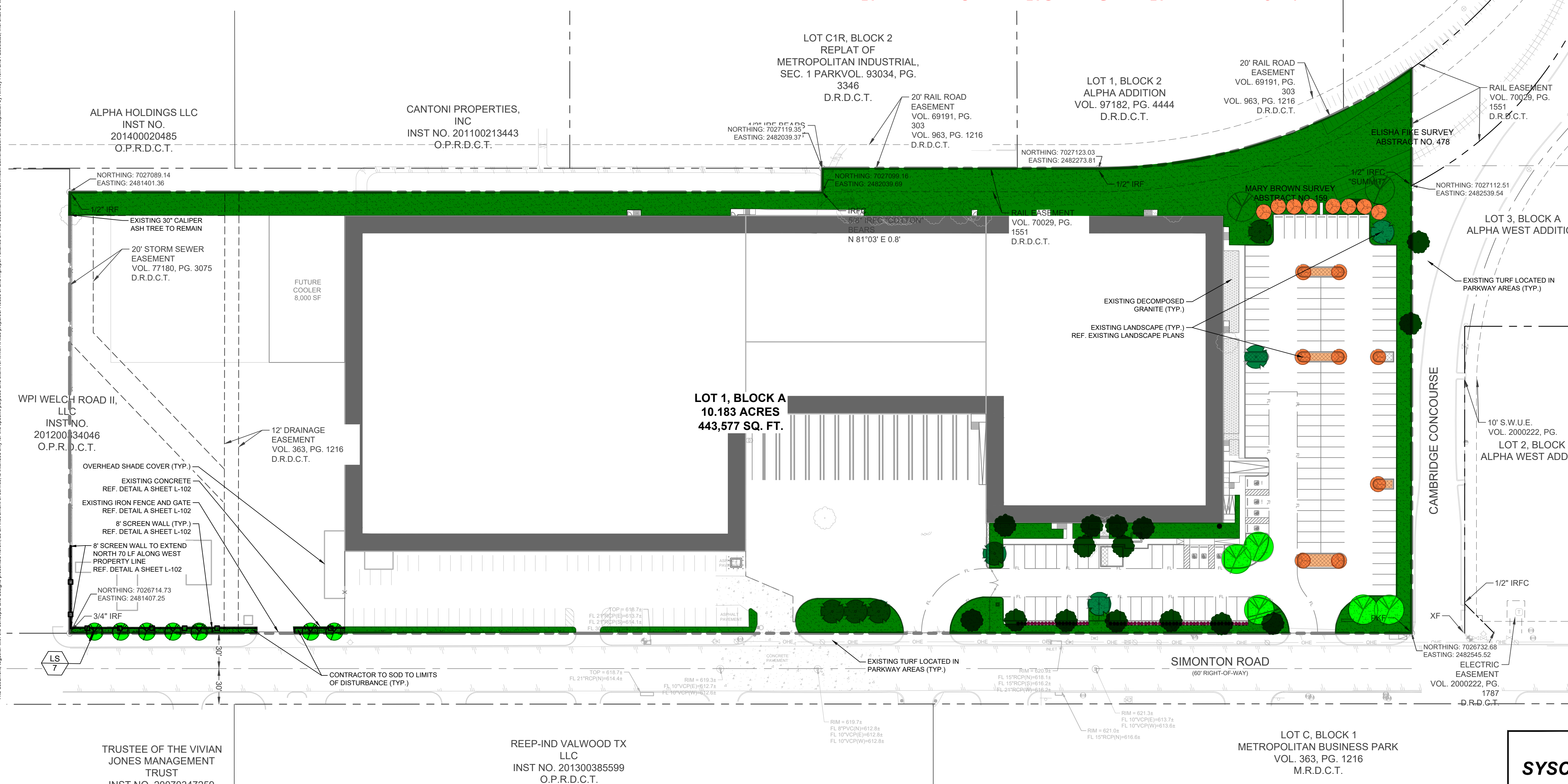
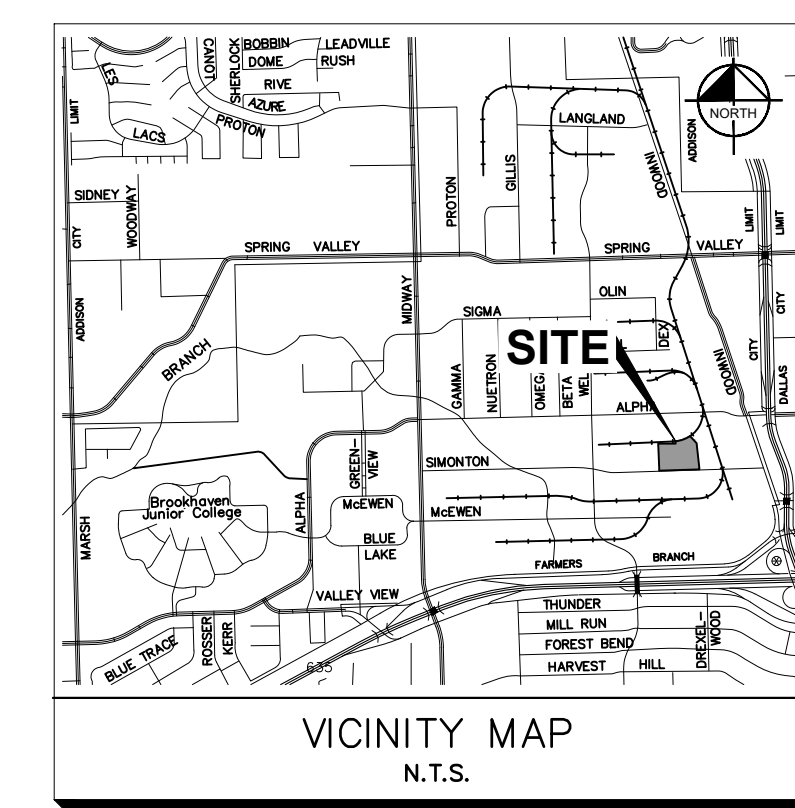
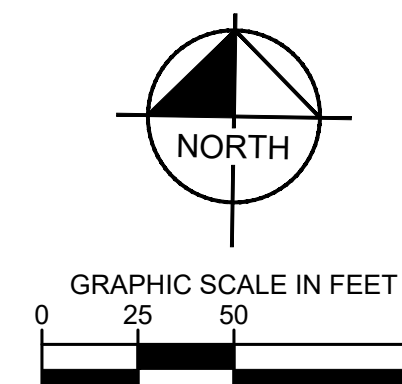


PLANT SCHEDULE								
TREES	CODE	QTY	BOTANICAL NAME	COMMON NAME	CONT	CALIPER	SIZE	REMARKS
	LS	16	LAGERSTROEMIA INDICA 'SIOUX'	SIOUX CRAPE MYRTLE	B & B	3" CAL. MIN.	6' MIN. HEIGHT	MULTI-TRUNK, 3-5 MIN STEMS, FULL AND MATCHING
	QV	7	QUERCUS VIRGINIANA	SOUTHERN LIVE OAK	B & B	3" CAL. MIN.	10' MIN. HEIGHT	SINGLE STRAIGHT TRUNK, FULL AND MATCHING, 6" MIN. CLEARANCE UNDER LOWEST BRANCHING
	UA	8	ULMUS PARVIFOLIA	LACEBARK ELM	B & B	3" CAL. MIN.	10' MIN. HEIGHT	SINGLE STRAIGHT TRUNK, FULL AND MATCHING, 6" MIN. CLEARANCE UNDER LOWEST BRANCHING
SHRUBS	CODE	QTY	BOTANICAL NAME	COMMON NAME	CONT	SPACING	SIZE	REMARKS
	IB	61	ILEX CORNUTA 'BURFORDII NANA'	DWARF BURFORD HOLLY	3 GAL. MIN.	36" O.C.	24"H X 24"W	FULL AND MATCHING
GROUND COVERS	CODE	QTY	BOTANICAL NAME	COMMON NAME	CONT	SIZE	SPACING	REMARKS
	AJ	571	TRACHELOSPERMUM ASIATICUM	ASIAN JASMINE	1 GAL.	6" H X 6" W	18" O.C.	FULL AND MATCHING
	CD	57,876 SF	CYNODON DACTYLON	BERMUDA GRASS	TURF			

TOTAL LANDSCAPE AREAS = 62,001 SF
TOTAL LOT AREA = 443,577 SF
TOTAL LANDSCAPING = 13.98%

TOTAL LANDSCAPE AREAS = 62,001 SF
LOT AREA MINUS BUILDING AREA = 251,358 SF
TOTAL LANDSCAPING = 24.67%

TOTAL FRONTAGE AREA = 153,675 SF
TOTAL LANDSCAPE AREA = 22,411 SF
FRONTAGE/LANDSCAPE = 14.6%
THIS IS THE ROAD FRONTAGE AREAS BETWEEN THE BUILDING FACE AND THE ROW.



BENCHMARK LIST	
CITY OF FARMERS BRANCH MONUMENT #22	ELEV= 628.00
BM # 1 SQUARE CUT WITH "X" ON TOP OF CURB IN CENTER OF RADIUS AT THE NORTHWEST CURB LINE AT THE INTERSECTION OF INWOOD ROAD AND SIMONTON ROAD.	ELEV= 628.38
BM # 2 SQUARE CUT WITH "X" ON TOP OF CURB IN CENTER OF RADIUS AT THE NORTHEAST CURB LINE AT THE INTERSECTION OF SIMONTON ROAD AND CAMBRIDGE CONCOURSE.	ELEV= 623.43
BM # 3 SQUARE CUT WITH "X" ON TOP OF CURB IN CENTER OF RADIUS AT THE SOUTHWEST CURB LINE AT THE INTERSECTION OF CAMBRIDGE CONCOURSE AND ALPHA ROAD.	ELEV= 624.33
BM # 4 SQUARE CUT WITH "X" ON TOP OF CURB INLET NORTH LINE OF SIMONTON ROAD, 3675' WEST OF THE INTERSECTION OF CAMBRIDGE CONCOURSE AND SIMONTON ROAD.	ELEV= 618.69

LANDSCAPE PLAN
SYSCO FRESHPOINT FOODS FACILITY

LOT 1, BLOCK A
 BEING 10.183 ACRES
 SITUATED IN THE
 ELISHA FIKE SURVEY, ABSTRACT NO. 478
 AND MARY BROWN SURVEY, ABSTRACT NO. 159
 CITY OF FARMERS BRANCH, DALLAS COUNTY, TEXAS

OWNER:
 AMERICAN PRODUCE AND VEGETABLE COMPANY
 8390 LBJ FREEWAY, SUITE 565
 DALLAS, TEXAS 75243
 CONTACT: DAVID HARTMAN
 TEL. NO. 972-385-5800

OWNER:
 FRESHPOINT DALLAS, INC.
 8390 LBJ FREEWAY, SUITE 565
 DALLAS, TEXAS 75243
 CONTACT: DAVID HARTMAN
 TEL. NO. 972-385-5800

ENGINEER/SURVEYOR:
 KIMLEY-HORN AND ASSOCIATES, INC.
 13455 NOEL ROAD
 TWO GALLERIA OFFICE TOWER
 SUITE 700
 DALLAS, TEXAS 75240
 TEL. NO. 972-770-1300
 CONTACT: KEVIN GRAHAM, P.E.

DATE	ACTION

Kimley >>> **Horn**

13455 NOEL ROAD, TWO GALLERIA OFFICE TOWER, SUITE 700
 DALLAS, TX 75240
 PHONE: 972-770-1300 FAX: 972-239-3820
 WWW.KIMLEY-HORN.COM TX F-928
 © 2020 KIMLEY-HORN AND ASSOCIATES, INC.

THE SITE PLAN IS FOR CITY REVIEW ONLY TO ILLUSTRATE COMPLIANCE WITH ZONING AND DEVELOPMENT REGULATIONS. IT IS NOT INTENDED FOR CONSTRUCTION PURPOSES.

KHA PROJECT: 084483103
 DATE: 8/11/2021
 SCALE: AS SHOWN
 DESIGNED BY: RBG
 DRAWN BY: RBG
 CHECKED BY: JAF

SYSCO FRESHPOINT FOOD FACILITY EXPANSION

LANDSCAPE PLAN

SHEET NUMBER L-101