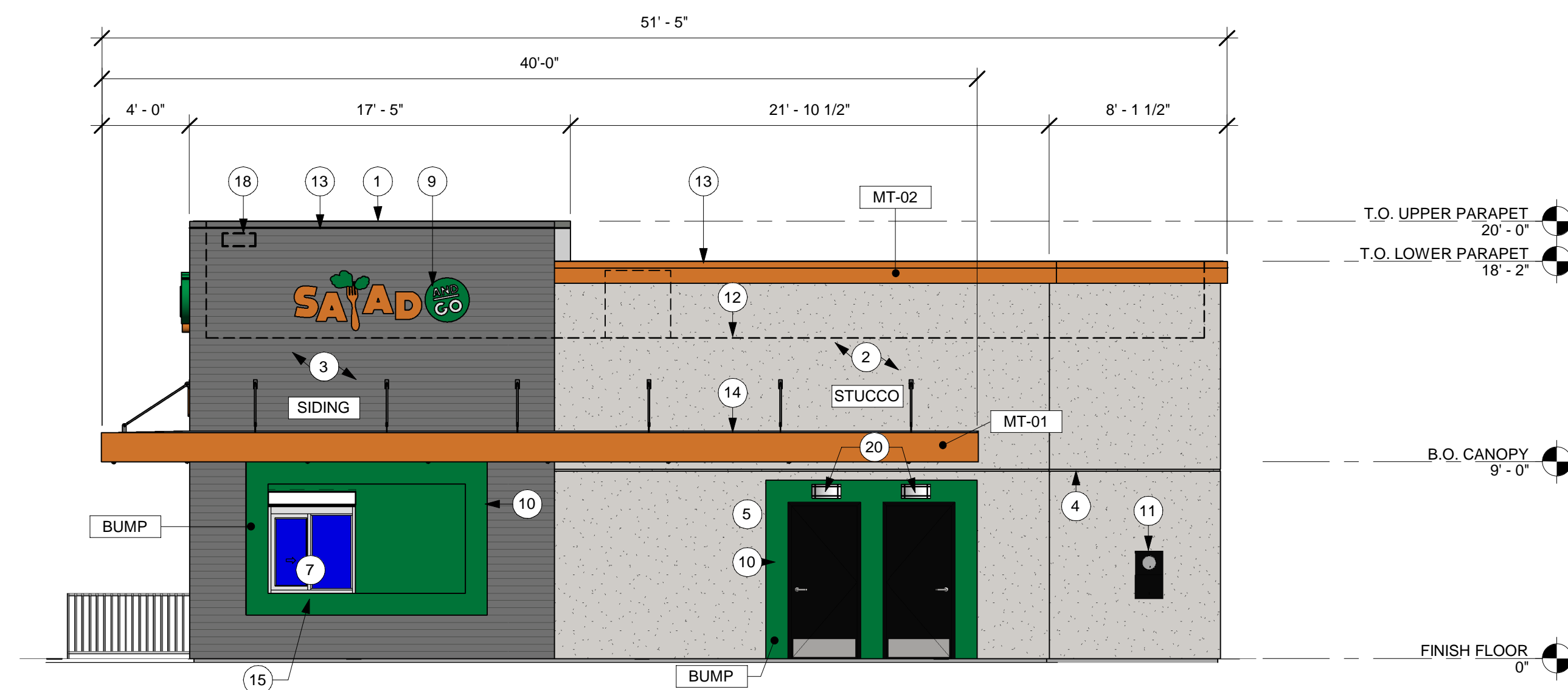


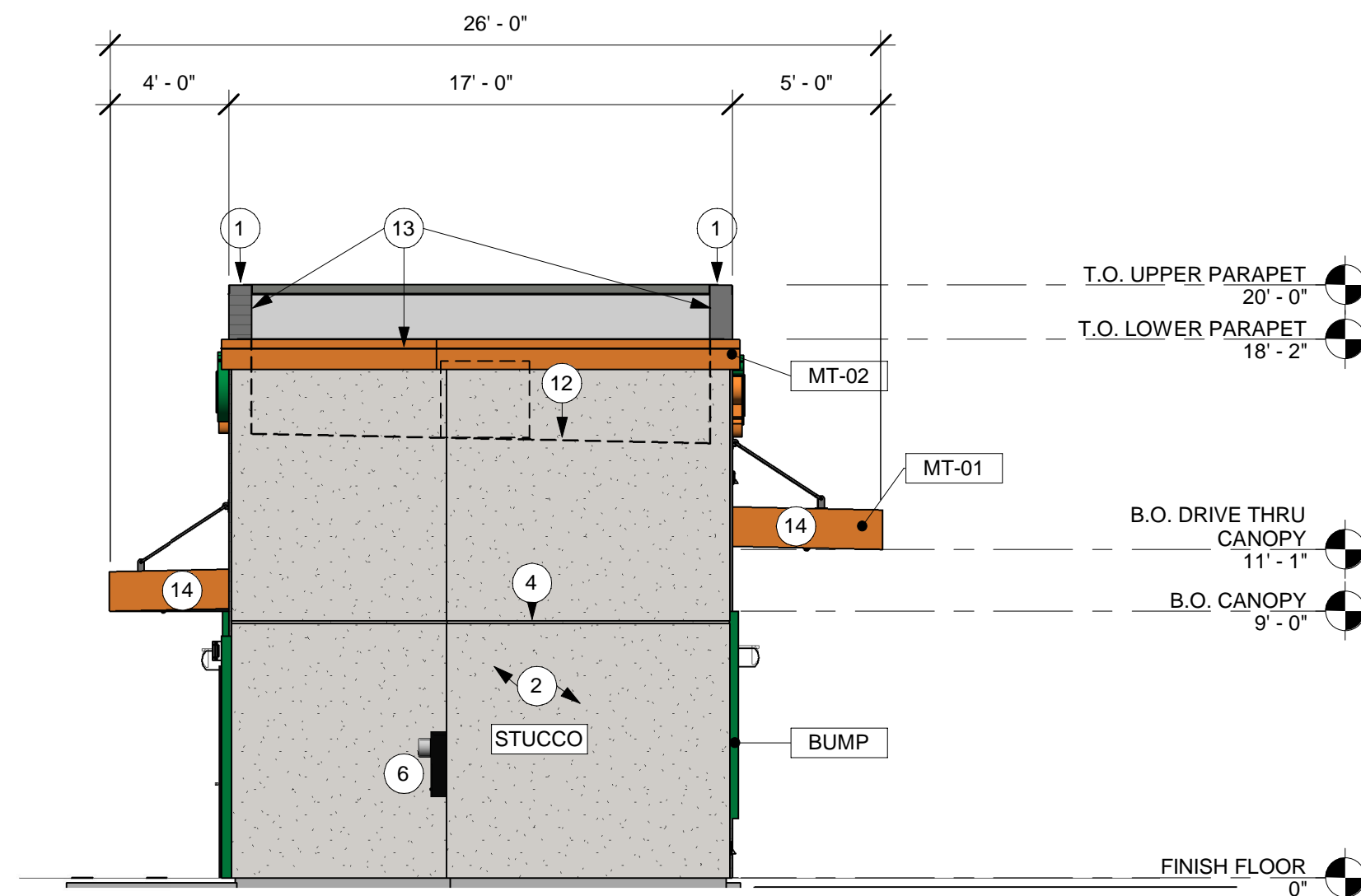
5 WEST ELEVATION

Scale: 3/16" = 1'-0"



3 EAST ELEVATION

Scale: 3/16" = 1'-0"



1 NORTH ELEVATION

Scale: 3/16" = 1'-0"

EXTERIOR FINISH SCHEDULE				
	DESCRIPTION	PRODUCT	FINISH	COLOR
[STUCCO]	STUCCO	TBD	PAINTED	SW 7004 256-C2 'SNOWBOUND'
[SIDING]	METAL SIDING	TAYLOR METAL PRODUCT 'SMOOTHWALL', FLAT PAINT	POWDER COATED	SLATE GRAY
[BUMP]	STUCCO	TBD	PAINTED	SW CUSTOM TO MATCH 3M 3630-156 R.O: G:134; B:65
[MT-01]	METAL FASCIA	TBD	PAINTED	SW 6887 116-C5 'NAVEL'
[MT-02]	METAL COPING	TBD	PAINTED	SW 6887 116-C5 'NAVEL'
[STRFNT]	STOREFRONT	KAWNEER	CLEAR ANODIZED	

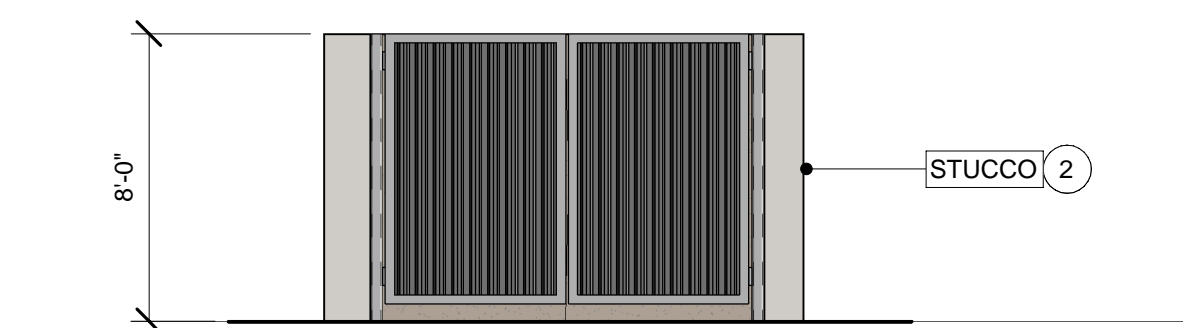
SOUTH ELEVATION MATERIALS			
	DESCRIPTION	AREA	PERCENTAGE
[STUCCO]	STUCCO	0 S.F.	0%
[SIDING]	METAL SIDING	294 S.F.	100%
[BUMP]	GREEN STUCCO	0 S.F.	0%

WEST ELEVATION MATERIALS			
	DESCRIPTION	AREA	PERCENTAGE
[STUCCO]	STUCCO	526 S.F.	64%
[SIDING]	METAL SIDING	244 S.F.	30%
[BUMP]	GREEN STUCCO	51 S.F.	6%

NORTH ELEVATION MATERIALS			
	DESCRIPTION	AREA	PERCENTAGE
[STUCCO]	STUCCO	294 S.F.	100 %
[SIDING]	METAL SIDING	0 S.F.	0%
[BUMP]	GREEN STUCCO	0 S.F.	0%

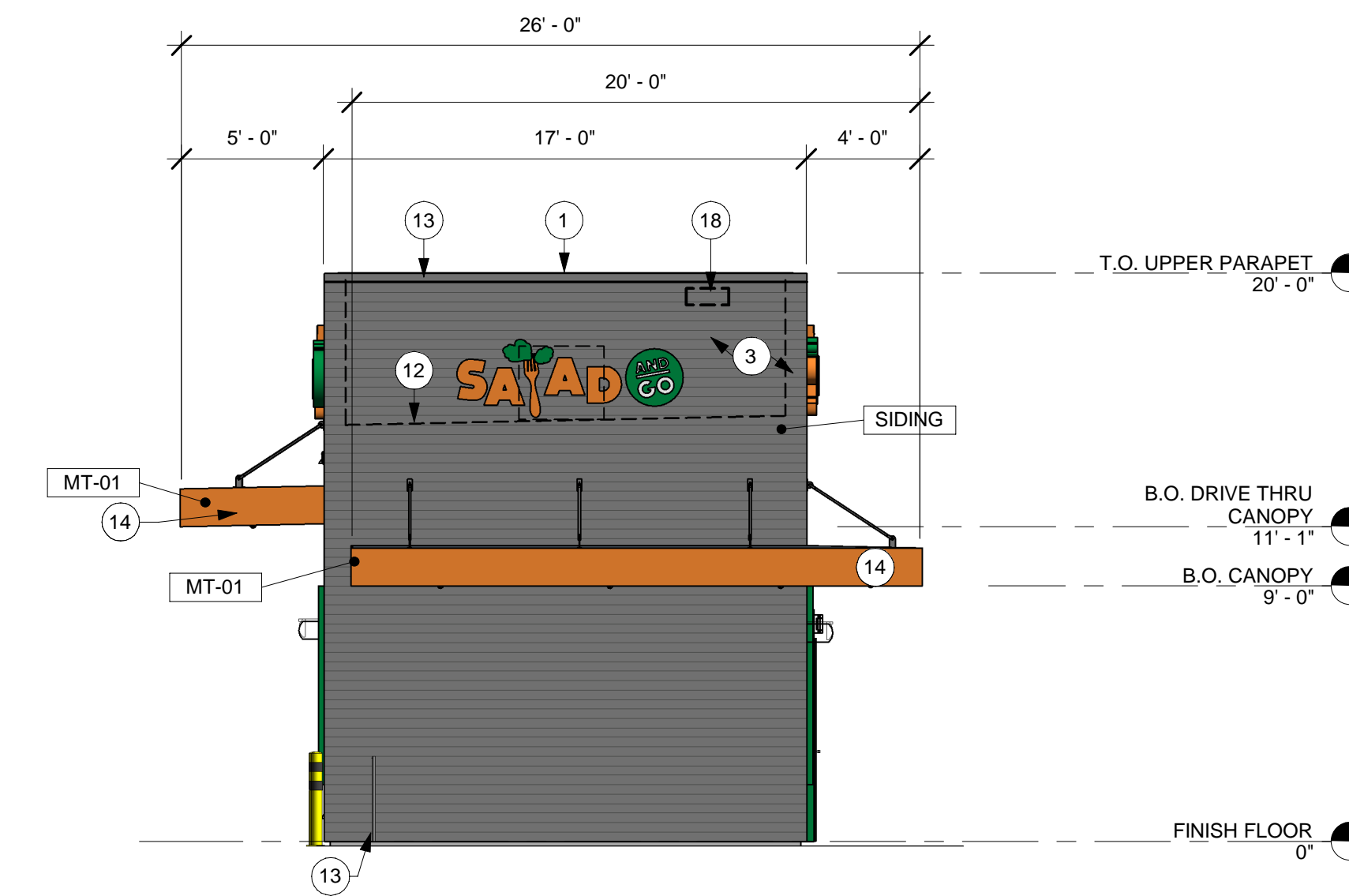
EAST ELEVATION MATERIALS			
	DESCRIPTION	AREA	PERCENTAGE
[STUCCO]	STUCCO	467 S.F.	59 %
[SIDING]	METAL SIDING	248 S.F.	31 %
[BUMP]	GREEN STUCCO	74 S.F.	10 %

FINISH SAMPLES	
[STUCCO]	SW 7004 256-C2 'SNOWBOUND'
[SIDING]	SLATE GRAY
[BUMP]	SW CUSTOM TO MATCH 3M 3630-156 R.O: G:134; B:65
[MT-01]	SW 6887 116-C5 'NAVEL'
[MT-02]	SW 6887 116-C5 'NAVEL'
[STRFNT]	CLEAR ANODIZED



4 TRASH ENCLOSURE ELEVATION

Scale: 3/16" = 1'-0"



2 SOUTH ELEVATION

Scale: 3/16" = 1'-0"

EXTERIOR ELEVATION KEYNOTES

- METAL PARAPET CAP PAINTED SW 7004 256-C2 'SNOWBOUND'. AT METAL SIDING LOCATION, MATCH THE PARAPET CAP WITH METAL SIDING.
- WESTERN ONEKOTE PAITED SAND FINISH SYSTEM
- METAL SIDING. MBCI CF ARCH. PANEL, SLATE GRAY.
- STUCCO CONTROL JOINTS
- FIRE DEPARTMENT KNOX BOX
- ELECTRICAL PANELS. REF: ELEC.
- SLIDER WINDOW WITH DOUBLE INSULATED GLASS
- FIXED WINDOW WITH DOUBLE INSULATED GLASS
- FUTURE BUILDING SIGNAGE LOCATION. SIGNAGE BY OTHERS.
- POP-OUT
- ELECTRICAL EQUIPMENT. UTILITY BOXES AND CONDUIT TO BE PAINTED TO MATCH BUILDING COLOR. REF: ELECTRICAL
- ROOF LINE, BEHIND
- PARAPET WALL TO SCREEN ROOFTOP EQUIPMENT. MECHANICAL EQUIPMENT SHALL BE SCREENED IN ACCORDANCE WITH THE ZONING ORDINANCE.
- PAINTED C-CHANNEL CANOPY
- ACCESSIBLE SERVICE COUNTER
- DISPLAY KIOSK WITH SLIDING GLASS DOORS
- PAINTED 3'-6" METAL GUARD RAIL
- BUILDING NUMBER
- ROOF DRAIN
- WALL PACK LIGHTING SPEC TO BE TURNED DOWN

ARCHITECT OF RECORD



513 MAIN STREET, SUITE 300
FORT WORTH, TEXAS 76102
(817) 820-0433

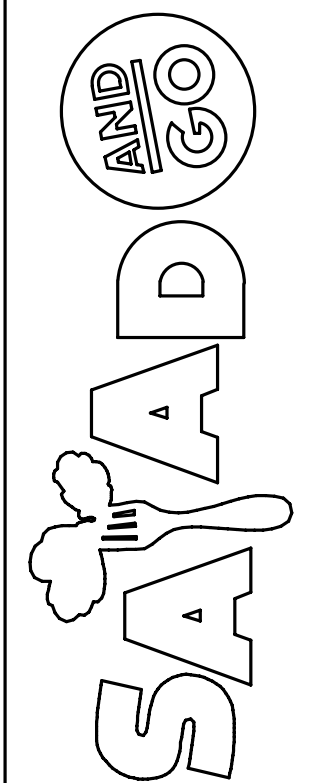


FACADE REVIEW: 7/14/2021

CONTRACTOR SHALL VERIFY ALL CONDITIONS AND DIMENSIONS AT THE JOB SITE AND NOTIFY THE ARCHITECT OF ANY DIMENSIONAL ERRORS, OMISSIONS OR DISCREPANCIES BEFORE BEGINNING OR FABRICATING ANY WORK. DO NOT SCALE DRAWINGS.

REVISION SCHEDULE

REV	DATE	BY	DESCRIPTIONS



JOSEY & VALLEY VIEW
13005 JOSEY LANE
FARMERS BRANCH, TX 75234

OWNER

SALAD AND GO CONCEPTS, LLC
743 N. GILBERT RD
GILBERT, AZ 85234

MATTHEW COPENHAVER
(410) 371-1563

ARCHITECT

ROGUE ARCHITECTS
513 MAIN STREET, SUITE 300
FORT WORTH, TEXAS 76102

JEREMY WILLIAMS
(817) 820-0433 PHONE
(682) 244-8917 FAX
CONTACT: ASHLEY BLOMMER

PROJECT #: 21-0773
ORIGINAL ISSUE DATE: 7/12/2021
PRODUCTION DESIGNER: S. CLARK
CHECKED BY: A. MORELAND

SHEET TITLE:
**FACADE PLAN
COLOR ELEVATIONS**

SHEET NUMBER:

FP1.0