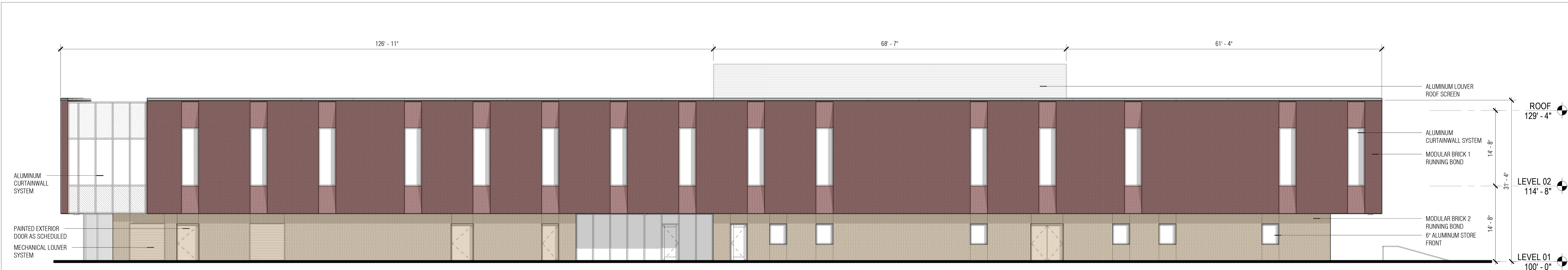
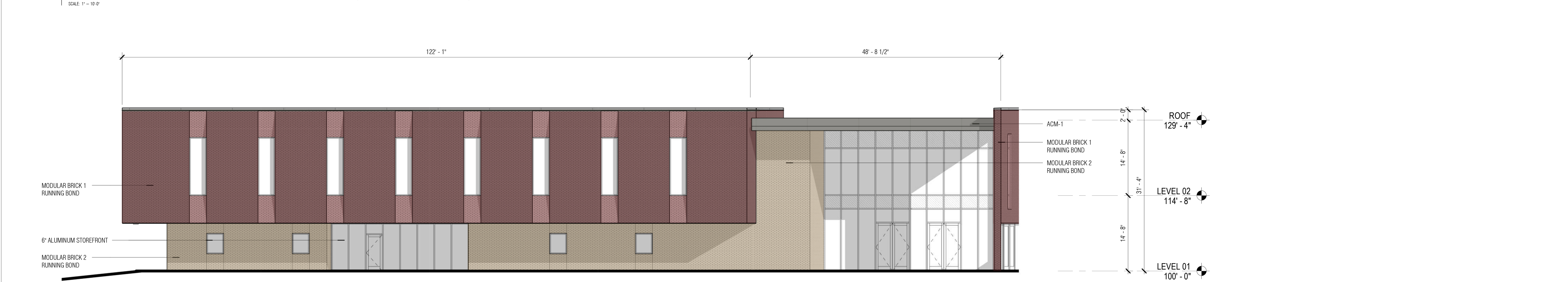


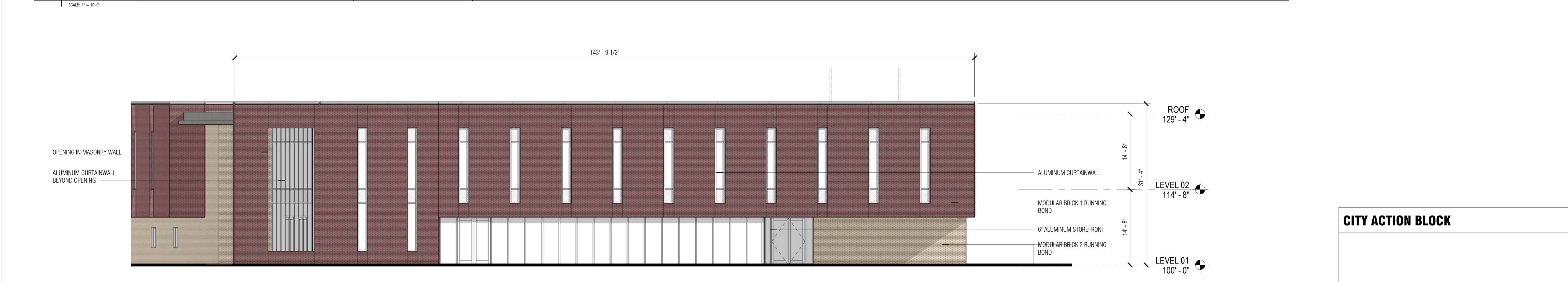
8/27/2021 11:23:28 AM C:\Users\jglenn\Documents\A200\A200-BC\_P02\_001.dgn



03 ENLARGED NORTH ELEVATION - BUILDING V (BACK ELEVATION)



02 ENLARGED SOUTH ELEVATION - BUILDING V (FRONT ELEVATION)



01 ENLARGED EAST ELEVATION - BUILDING V

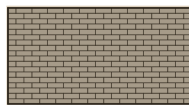
EXTERIOR ELEVATION GENERAL NOTES

- FINISH FLOOR ELEVATIONS ARE TO TOP OF CONCRETE SLAB UNLESS OTHERWISE NOTED.
- EXPANSION JOINT IN MASONRY VENEER TO BE 3/8" TYPICAL, UNLESS NOTED OTHERWISE.
- THE MATERIAL SYMBOLS ON THE ELEVATIONS ARE TO SHOW THE MATERIAL LIMITS. THEY ARE NOT USED TO SHOW SCALE.

EXTERIOR ELEVATION LEGEND



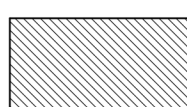
BR-01: MODULAR BRICK VENEER - FIELD COLOR, RUNNING BOND  
BASIS OF DESIGN: COLOR TO MATCH DARK BRICK ON BUILDING W



BR-02: MODULAR BRICK VENEER - FIELD COLOR, RUNNING BOND  
BASIS OF DESIGN: COLOR TO MATCH LIGHT BRICK ON BUILDING W



ACM-01: ALUMINUM COMPOSITE METAL FASCIA, 10'-0" JOINTS O.C.  
BASIS OF DESIGN: ALUCOBOND COMPOSITE WALL PANELS  
COLOR: SILVERSMITH



SPANDREL GLAZING



STUCCO (EXTERIOR PORTLAND CEMENT PLASTER, COLOR TBD)



MASONRY EXPANSION JOINT

ELEVATION DATA

01 ENLARGED EAST ELEVATION  
BUILDING V  
TOTAL SURFACE: 4,430 SF  
LEVEL 01 FENESTRATION: 8%  
LEVEL 02 FENESTRATION: 16%

BR-01 SF: 3,093 SF  
BR-01 %: 70%

BR-02 SF: 275 SF  
BR-02 %: 6%

ACM-01 SF: 0 SF  
ACM-01 %: 0%

GLAZING SF: 1,062 SF  
GLAZING %: 24%

02 ENLARGED SOUTH ELEVATION  
BUILDING V (FRONT ELEVATION)  
TOTAL SURFACE: 5,082 SF  
LEVEL 01 FENESTRATION: 16%  
LEVEL 02 FENESTRATION: 14%

BR-01 SF: 2,434 SF  
BR-01 %: 58%

BR-02 SF: 1,027 SF  
BR-02 %: 20%

ACM-01 SF: 89 SF  
ACM-01 %: 2%

GLAZING SF: 1,512 SF  
GLAZING %: 20%

03 ENLARGED NORTH ELEVATION  
BUILDING V (BACK ELEVATION)  
TOTAL SURFACE: 7,910 SF  
LEVEL 01 FENESTRATION: 8%  
LEVEL 02 FENESTRATION: 11%

BR-01 SF: 4,762 SF  
BR-01 %: 60%

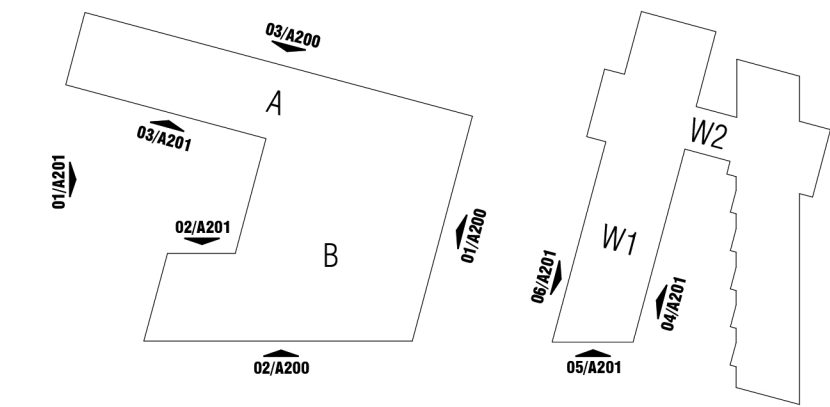
BR-02 SF: 1,658 SF  
BR-02 %: 21%

ACM-01 SF: 0 SF  
ACM-01 %: 0%

GLAZING SF: 1,490 SF  
GLAZING %: 19%

CITY ACTION BLOCK

KEY PLAN



5646 MILTON STREET, SUITE 426  
DALLAS, TEXAS 75206  
[WWW.GLENN-PARTNERS.COM](http://WWW.GLENN-PARTNERS.COM)  
COPYRIGHT © 2018 GLENN | PARTNERS

**EARLY COLLEGE CENTER**  
**DALLAS COLLEGE - BROOKHAVEN CAMPUS**  
3939 VALLEY VIEW LN.  
FARMERS BRANCH, TX 75244

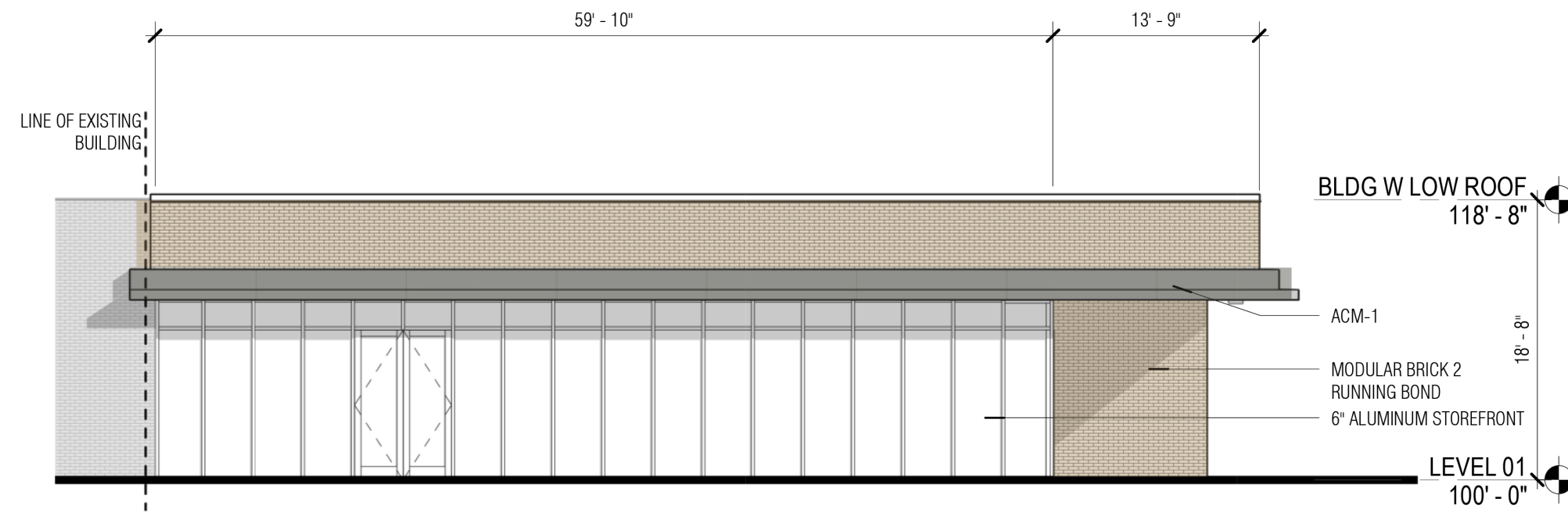
NO	REVISION	DATE
----	----------	------


GLENN | PARTNERS PROJECT NO. 20-003

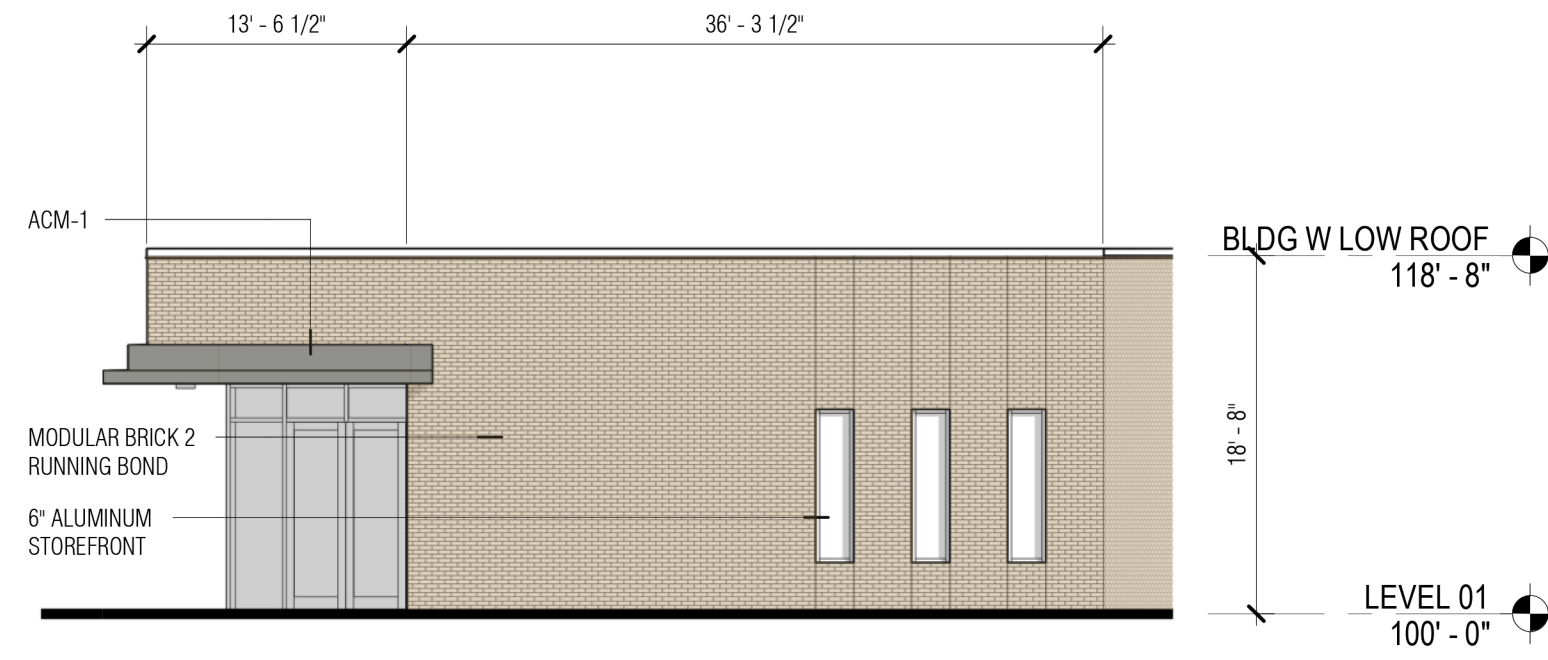
**A200**  
**EXTERIOR**  
**ELEVATIONS**

**DETAIL SITE PLAN R1**  
**08.27.2021**

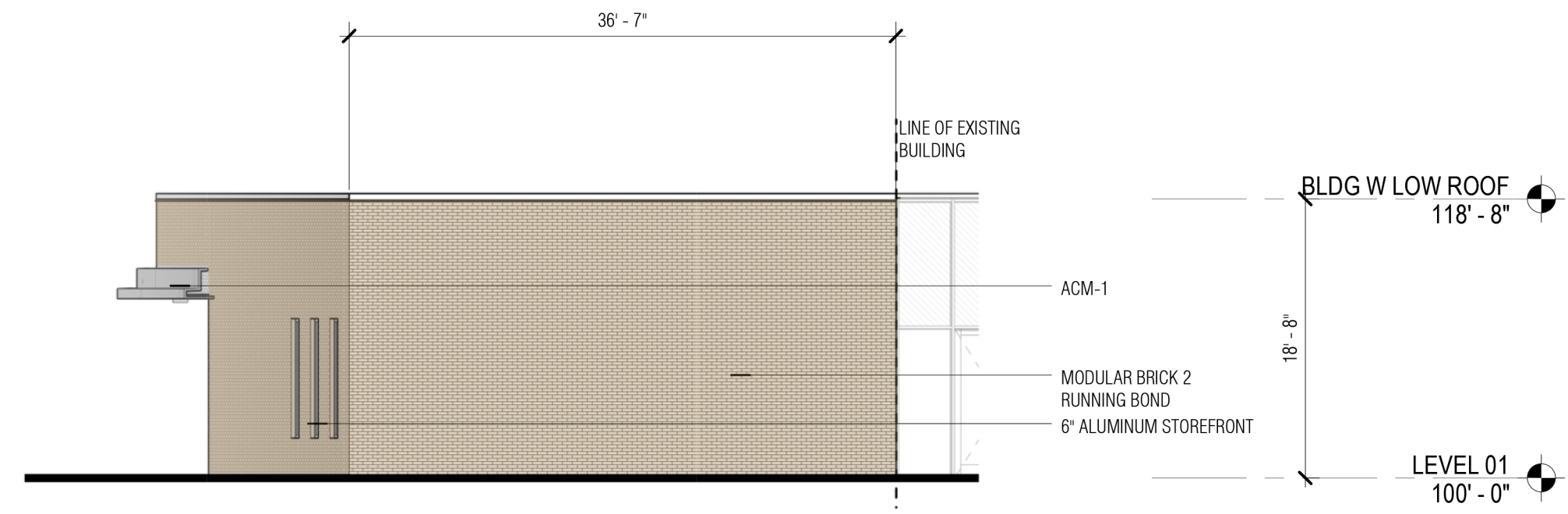




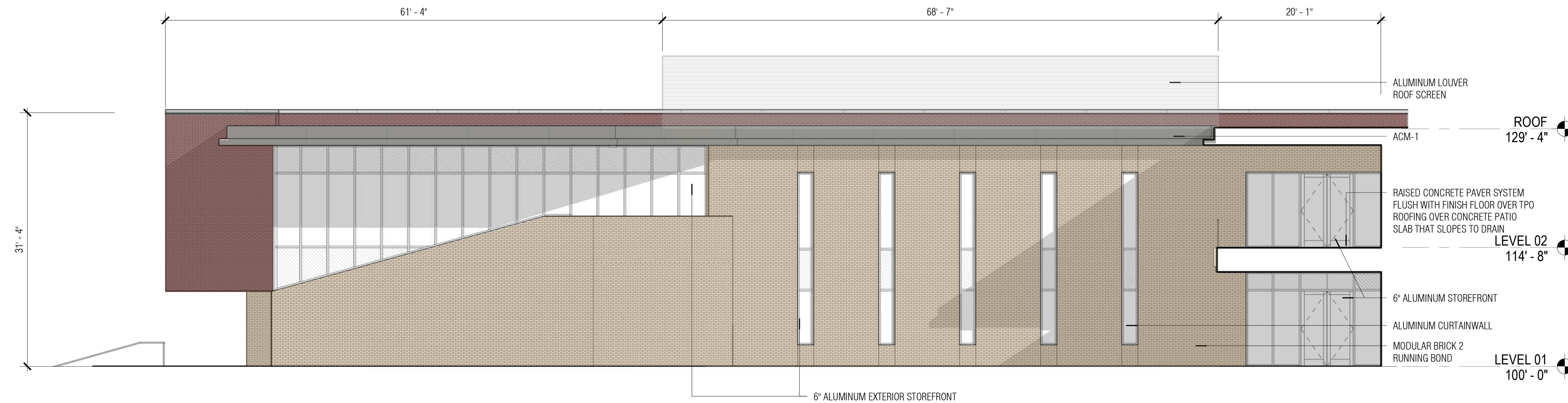
SCALE: 1" = 10'-0"



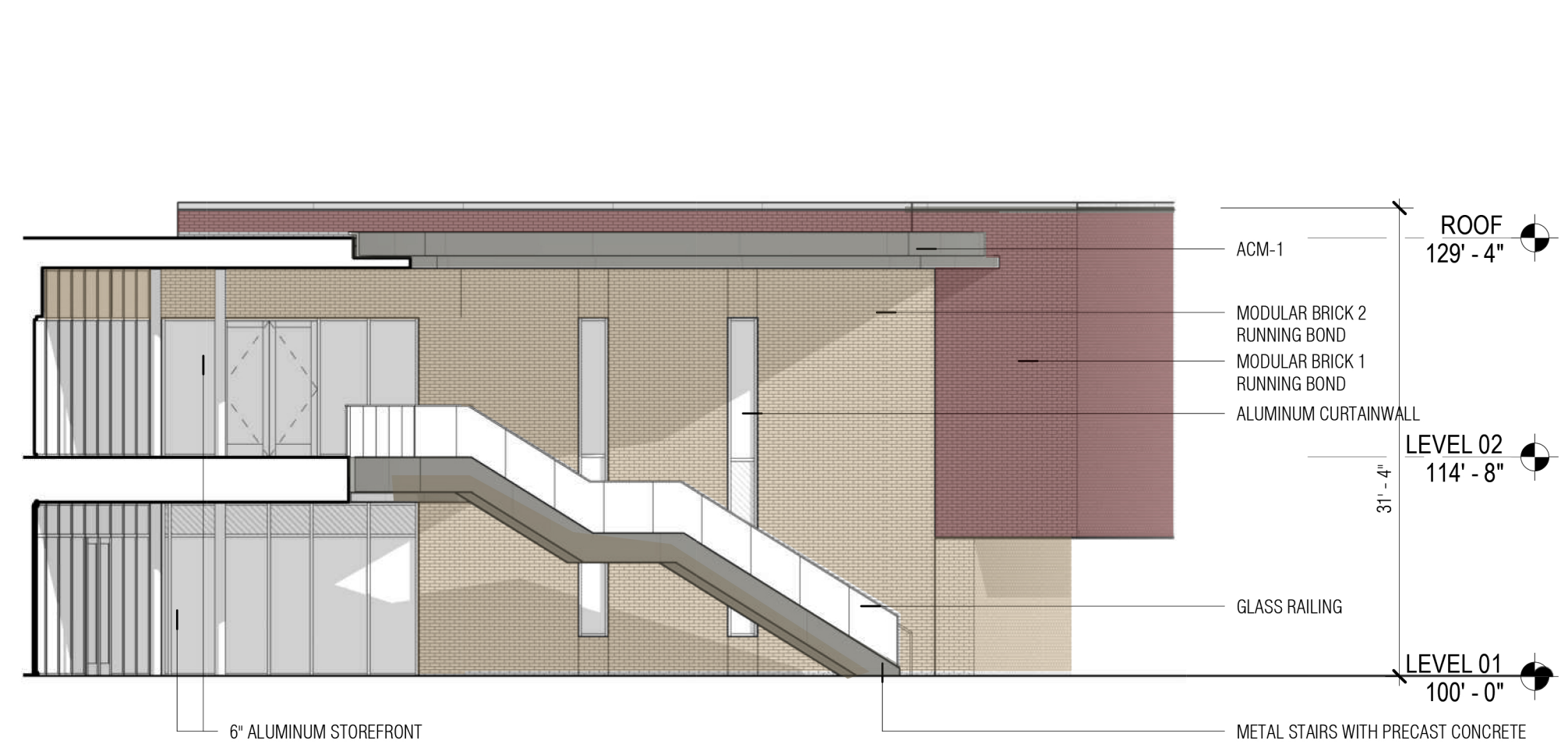
SCALE: 1" = 10'-4"



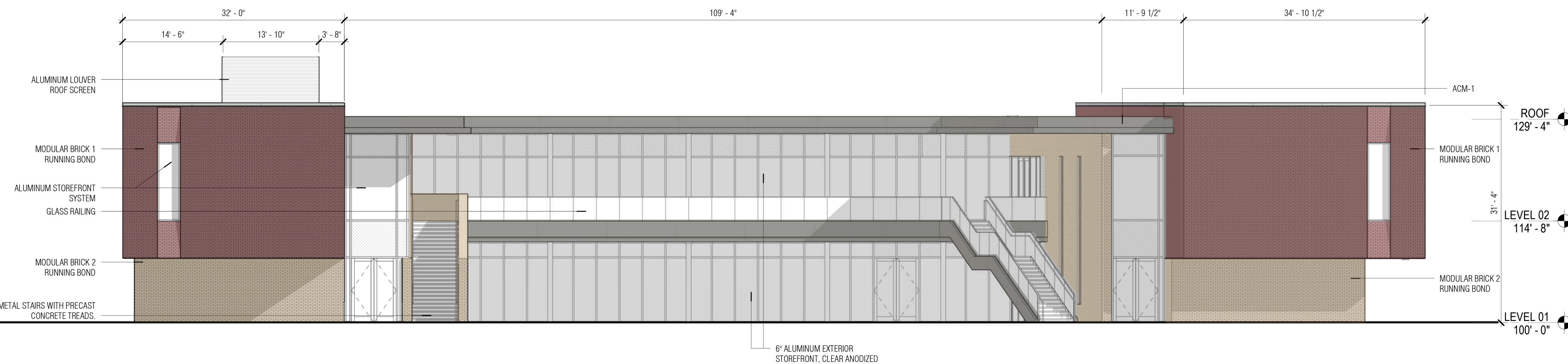
SCALE: 1" = 10'



SCALE: 1" = 10'-0"



SCALE: 1" = 10'



SCALE: 1" = 10'-0"

8/27/2021 9:23:38 AM  
C:\Users\Nashel\Documents\ARCH-DOCCD-BC R20 Jack bobbie nt



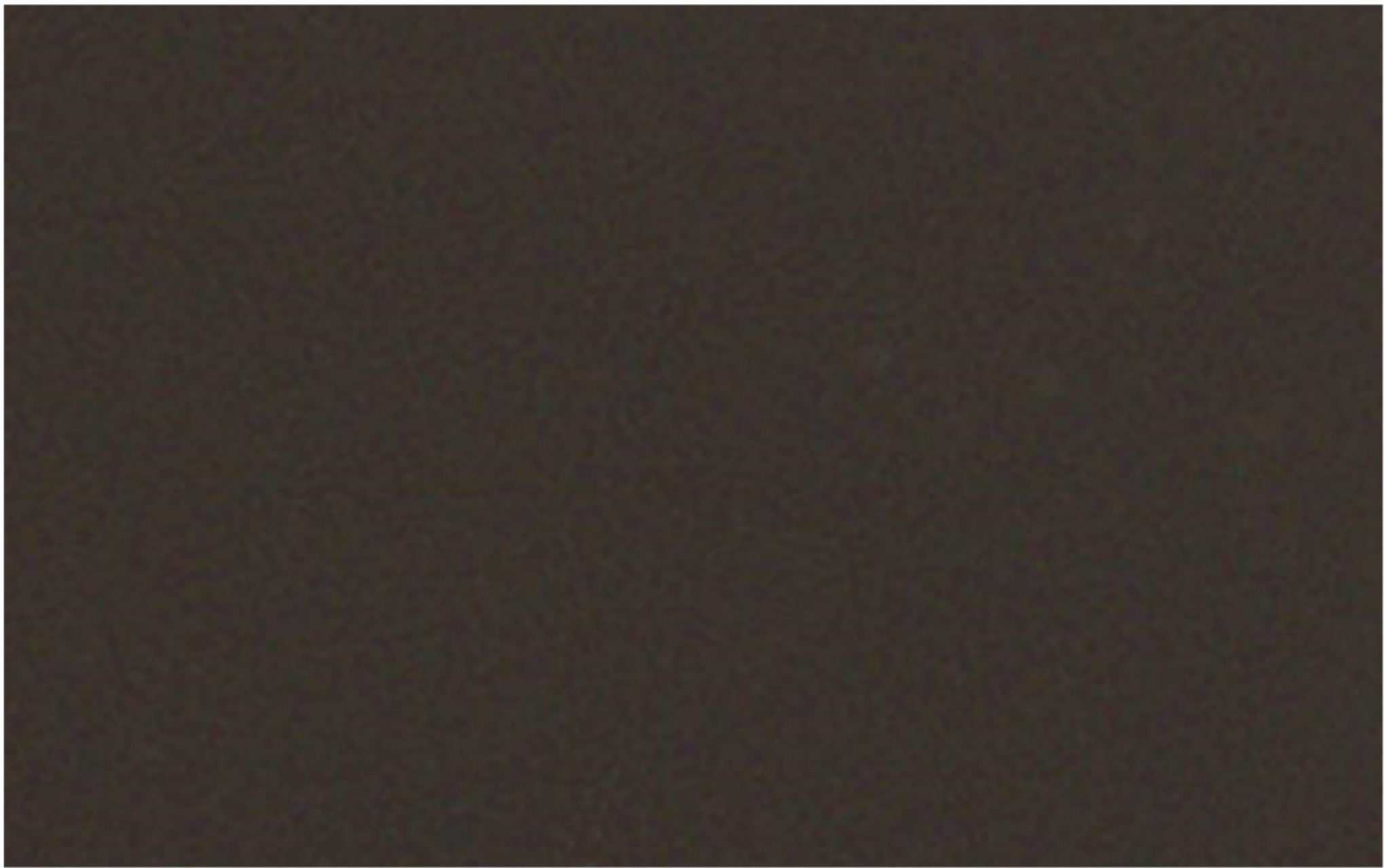
MODULAR BRICK 2



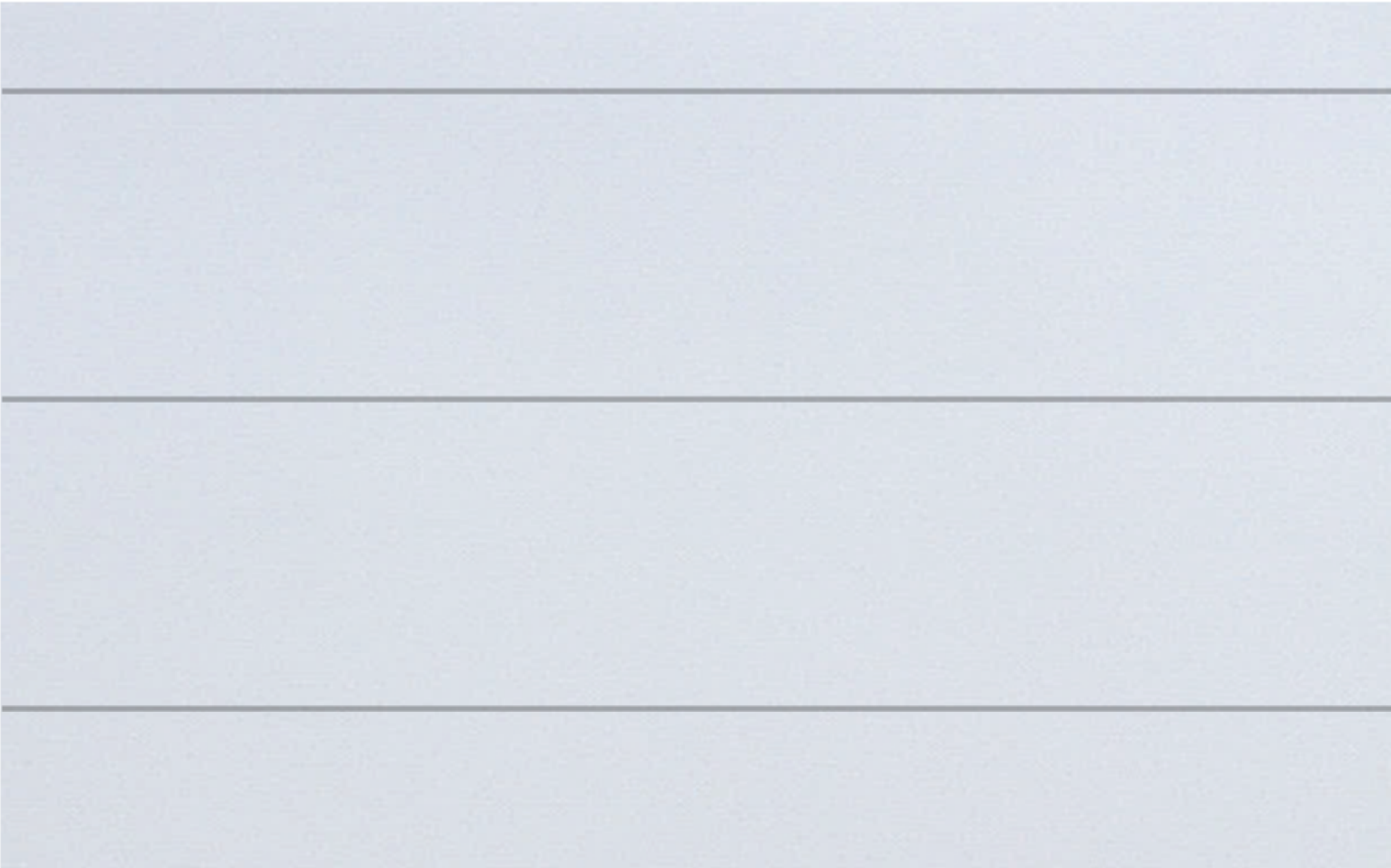
MODULAR BRICK 1



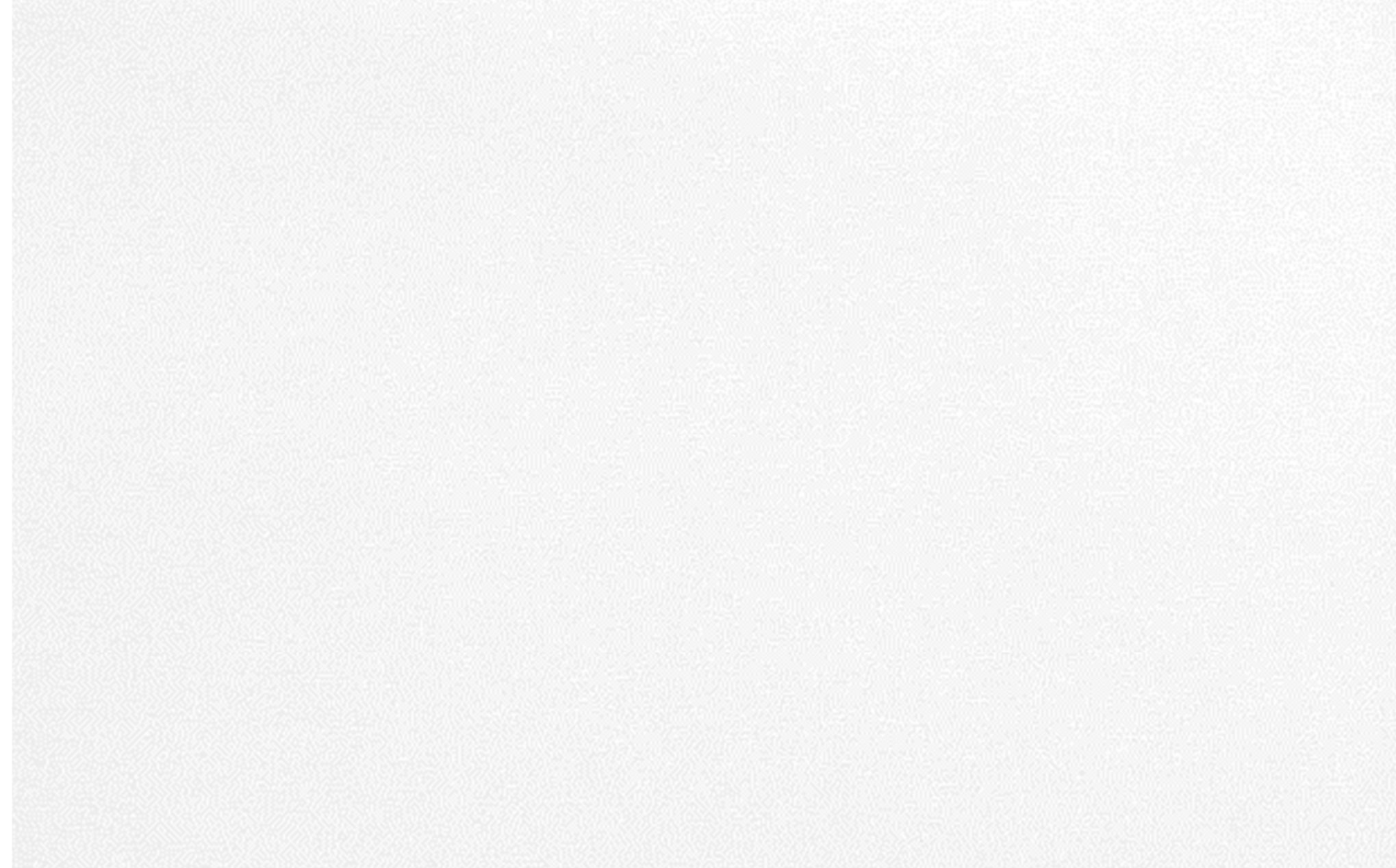
ACM-1(ALUMINUM COMPOSITE METAL PANEL)



ALUMINUM LOUVER ROOF SCREEN



STUCCO PLASTER SOFFIT



ANNODIZED ALUMINUM STOREFRONT AND CURTAIN WALL MULLIONS



proposed exterior materials