



client  
 CUSHMAN AND WAKEFIELD  
 2021 MCKINNEY AVENUE, SUITE 900  
 DALLAS, TX 75201  
 CONTACT #

civil engineer  
 PACHECO KOCH  
 7557 RAMBLER ROAD SUITE 1400  
 DALLAS, TX 75231  
 972.235.3031

landscape architect  
 TBG PARTNERS  
 2001 BRYAN STREET SUITE 1450  
 DALLAS, TX 75201  
 214.744.0757

structural engineer  
 L.A. FUESS PARTNERS  
 3333 LEE PARKWAY SUITE 300  
 DALLAS, TX 75219  
 214.871.7010

mep engineer  
 SCHMIDT & STACY  
 2711 N HASKELL AVE SUITE 400  
 DALLAS, TX 75204  
 214.874.0200

project  
 INTERNATIONAL PLAZA - LAKE HOUSE  
 14231 DALLAS PKWY  
 DALLAS, TX 75254

The drawings and written material herein constitute original work of the architect, and as intellectual property and instruments of service, are subject to copyright and may not be reproduced, distributed, published or used in any way without the express written consent of the architect, original issue

CONSTRUCTION DOCUMENTS 03.01.2019  
 revisions

- 1 04/04/2019 - Revision
- 2 08/23/2019 - WCP1

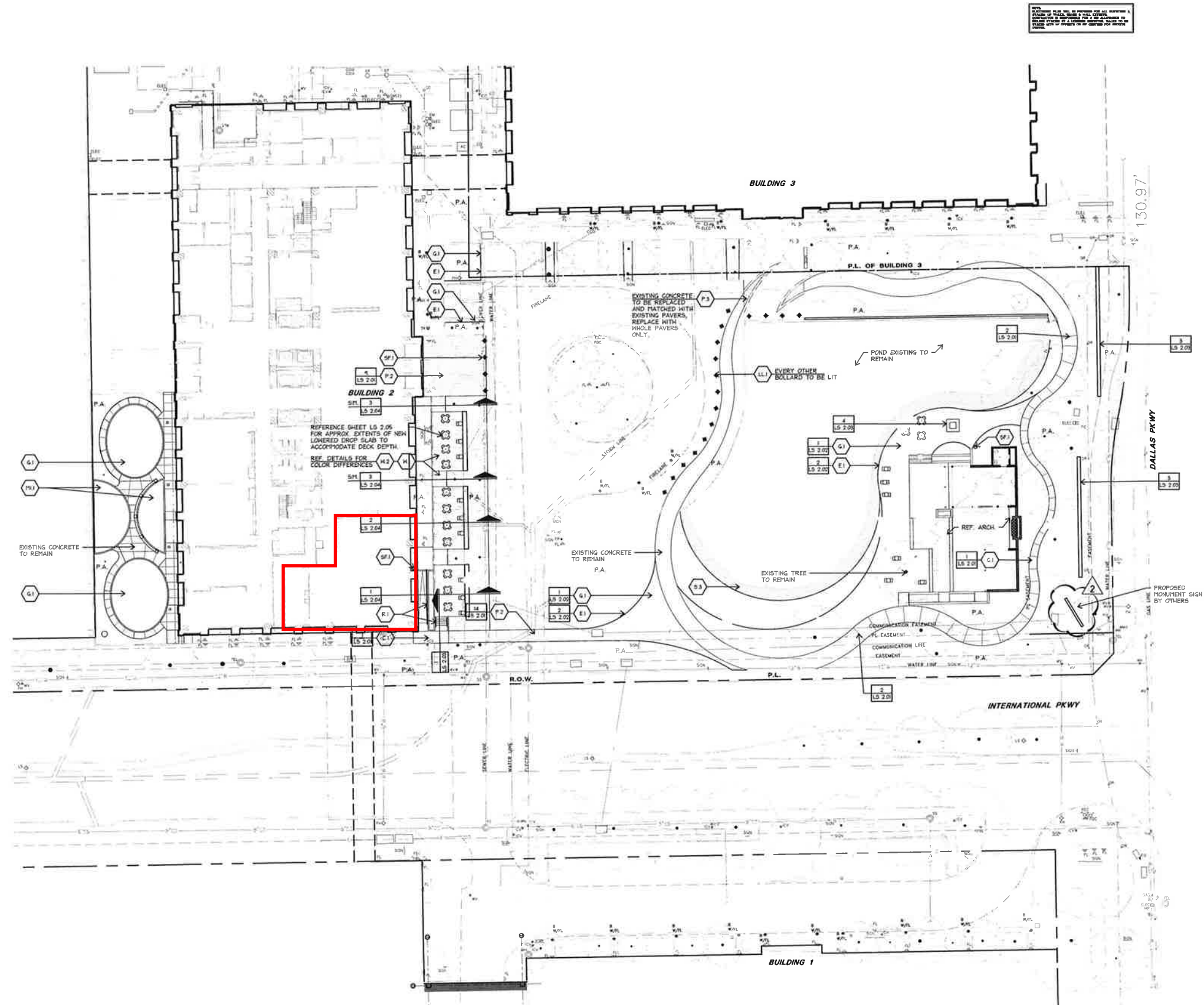
site plan

project number 18065.100

date: 03/1/2019

sheet

**LS 1.01**



1 SITE PLAN

